



Figure 13. Packaging-2

12. ASSEMBLY

1. Pick and place the base with P&P patch.

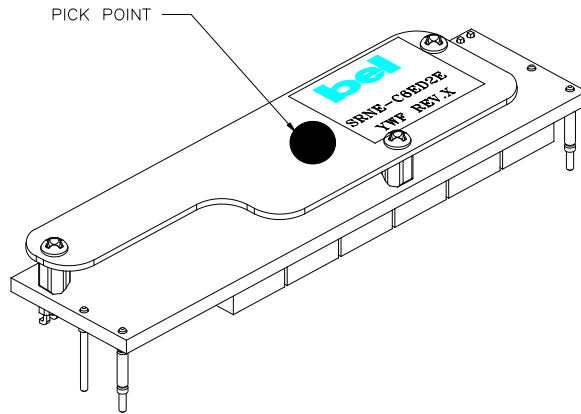


Figure 14.

2. Solder the open part onto motherboard.
solder specifications: Sn96.5Ag3Cu0.5.

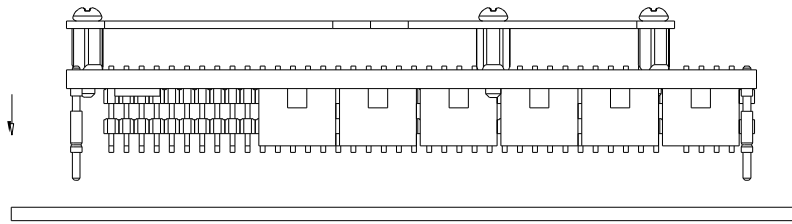


Figure 15.

3. Remove the P&P patch use screwdriver and then discard patch and screws. Do not try to remove the hex standoffs from the PCB.

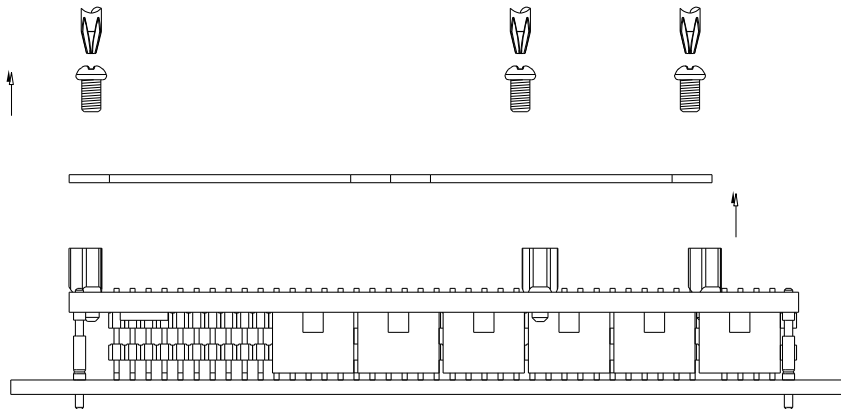
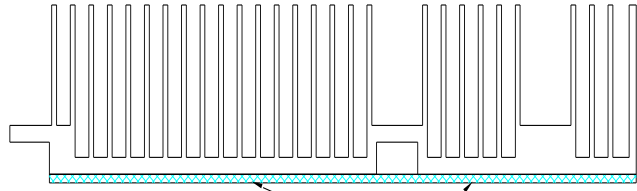


Figure 16.

- Remove the protective tape from thermal pad on heatsink.



Remove the protective tap

Figure 17.

- Use screws to attach heatsink onto the open part.
The screws to use for heatsink assembly are the ones that were shipped with the heatsinks.
Torque range: 3.2 - 3.6 kgf-cm (2.78 - 3.12 in-lbs). Heatsink screws will come with glue (e.g., LOCTITE 242) pre-applied.

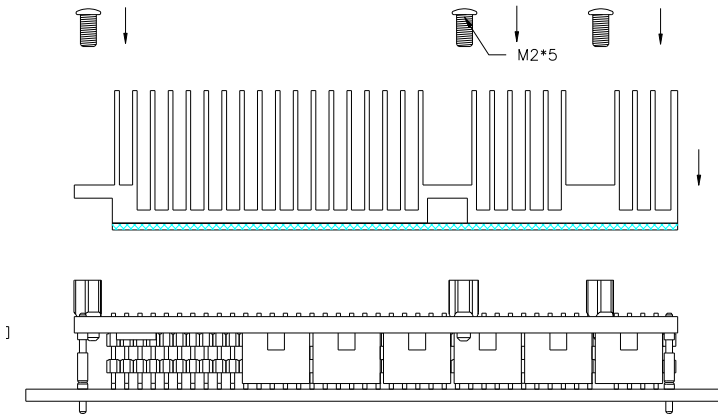


Figure 18.

- Finished goods.

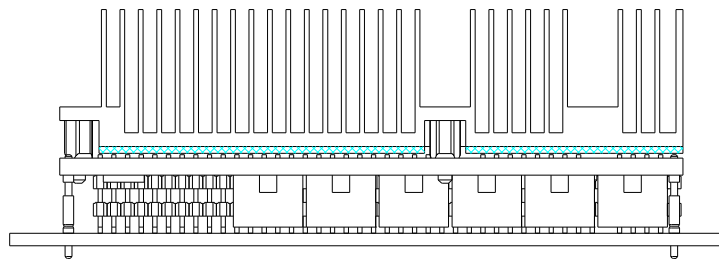


Figure 19.

13. FINISHED DIMENSIONS

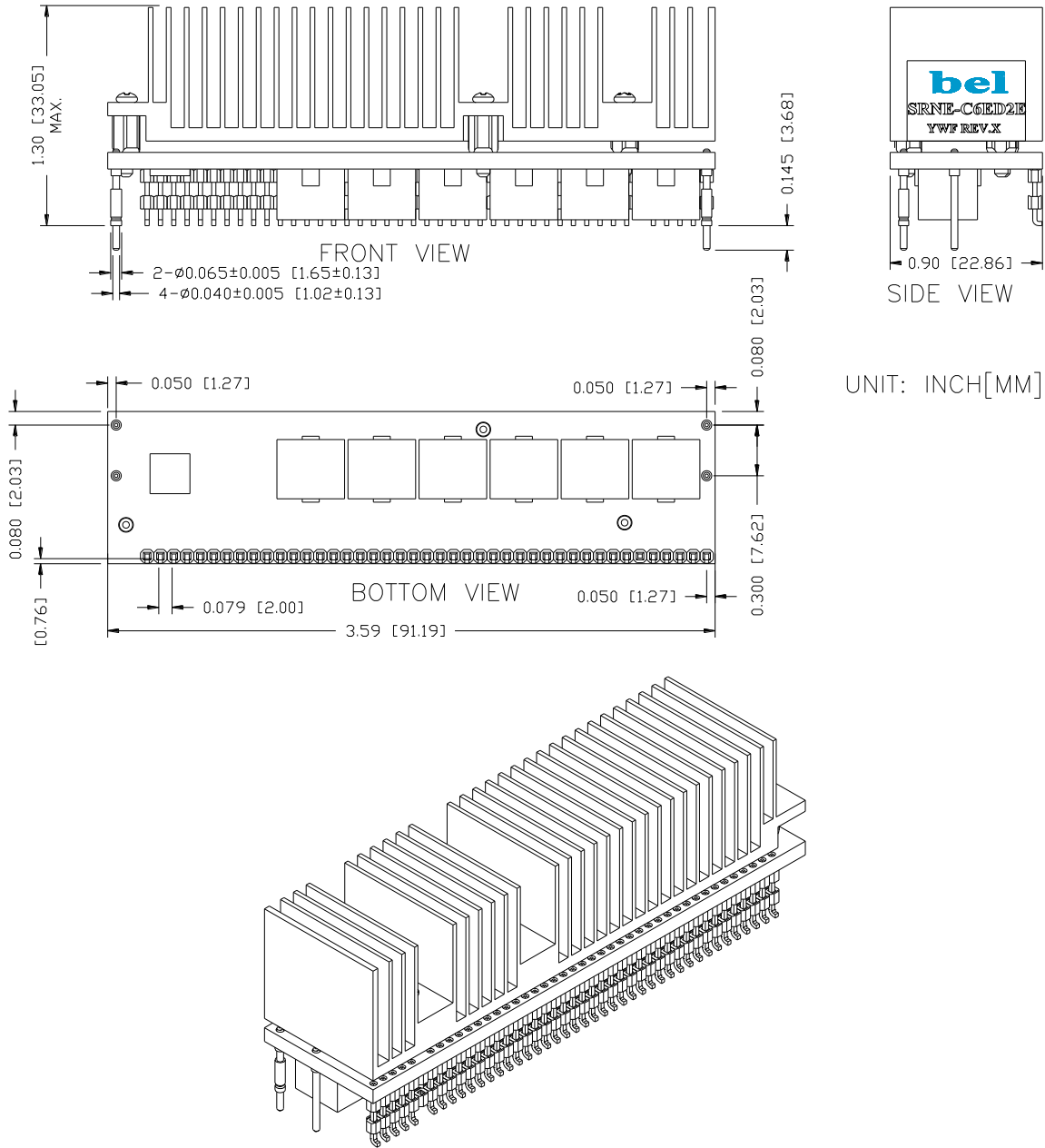


Figure 20. Finished dimensions

14. REVISION HISTORY

DATE	REVISION	CHANGES DETAIL	APPROVAL
2012-04-25	A	First release	J.Yan
2012-05-07	B	Updated MD.	J.Yan
2013-11-29	C	Updated MD.	J.Yan
2021-08-06	AD	Add object ID, module photo and thermal test airflow direction. Update to new format.	XF.Jiang

For more information on these products consult: tech.support@psbel.com

NUCLEAR AND MEDICAL APPLICATIONS - Products are not designed or intended for use as critical components in life support systems, equipment used in hazardous environments, or nuclear control systems.

TECHNICAL REVISIONS - The appearance of products, including safety agency certifications pictured on labels, may change depending on the date manufactured. Specifications are subject to change without notice.



Asia-Pacific
+86 755 298 85888

Europe, Middle East
+353 61 49 8941

North America
+1 866 513 2839