

THE INFORMATION CONTAINED HEREIN IS CONSIDERED "PROPRIETARY" TO BEL FUSE INC. AND SHALL NOT BE COPIED, REPRODUCED OR DISCLOSED WITHOUT THE WRITTEN APPROVAL OF BEL FUSE INC.

LED1 POLARITY			LED2 POLARITY		
PIN 14	PIN 13	COLOR	PIN 12	PIN 11	COLOR
-	+	YELLOW	-	+	GREEN

RoHS



# ELECTRICAL CHARACTERISTICS @ 25°C

## URNS RATIO

TP1	1CT : 1CT ±3%
TP2	1CT : 1CT ±3%
TP3	1CT : 1CT ±3%
TP4	1CT : 1CT ±3%

## CL @ 100kHz/100mVRMS

8mA DC BIAS	350μH MIN.
-------------	------------

## INS. LOSS

1MHz TO 100MHz	-1.1 dB MAX
----------------	-------------

## RET. LOSS (MIN) @ 100 OHMS +/-15%

1MHz-40MHz	-18 dB
40MHz-100MHz	-12+20LOG(F/80MHz) dB

## CM TO CM REJ

1MHz - 100MHz	-20 dB MIN
---------------	------------

## CROSSTALK (TX - RX)

1MHz - 30MHz	-40 dB MIN
30MHz - 60MHz	-30 dB MIN

## HIPOT (Isolation Voltage): 1500 Vrms

100% OF PRODUCTION TESTED TO COMPLY WITH IEEE 802.3 ISOLATION REQUIREMENTS.

## LED 1

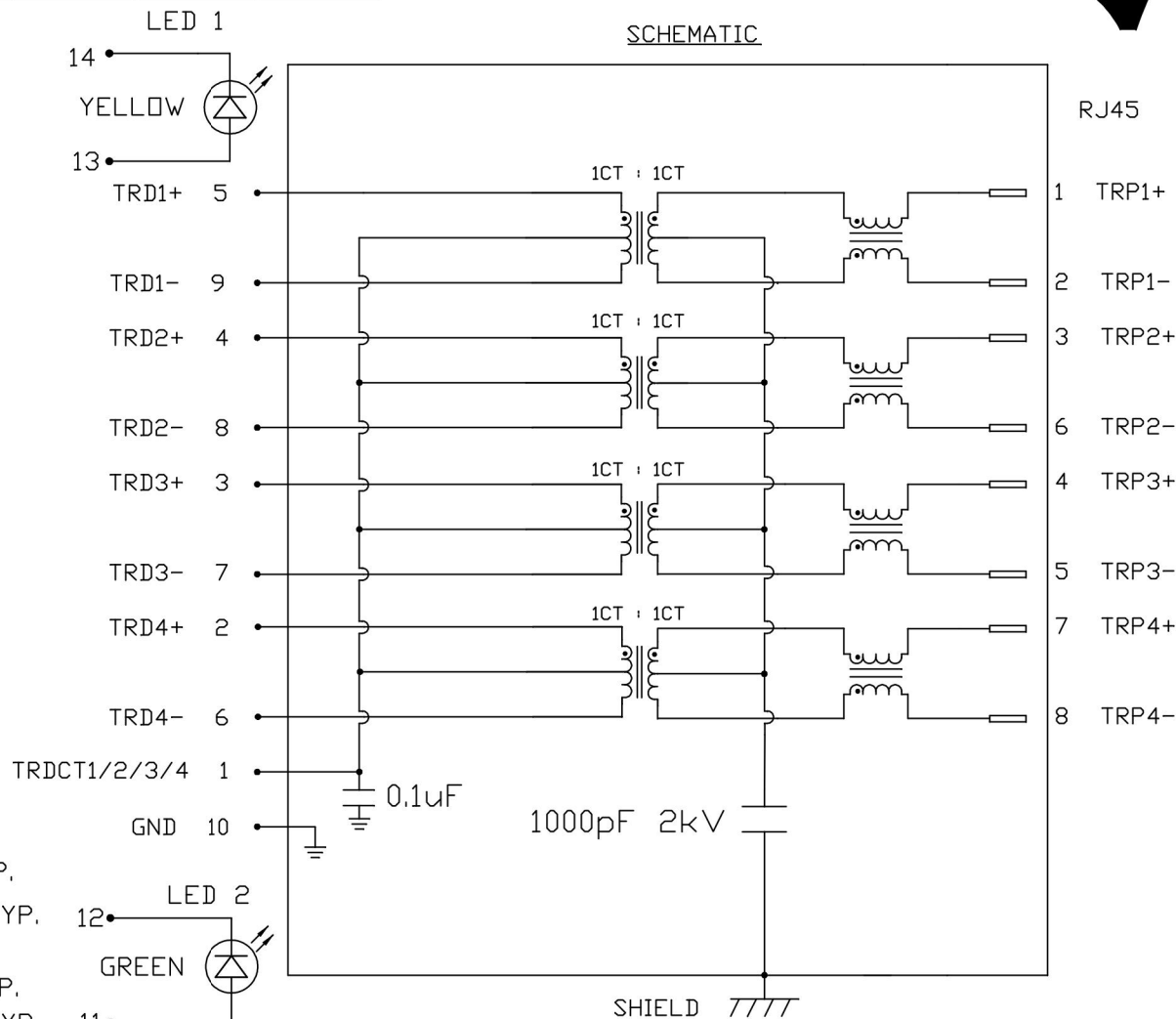
VF (FORWARD VOLTAGE) IF=20mA YELLOW 2.1V TYP.

λD (DOMINANT WAVELENGTH) IF=20mA YELLOW 590nm TYP.

## LED 2

VF (FORWARD VOLTAGE) IF=20mA GREEN 2.2V TYP.

λD (DOMINANT WAVELENGTH) IF=20mA GREEN 570nm TYP.



ORIGINATED BY  
CHOW WANCHUNG  
DATE 2015-07-16

TITLE  
gigabit MagJack®  
(8 core, Vertical)  
PATENTED

PART NO. / DRAWING NO.  
V890-1AX1-A1

FILE NAME  
V890-1AX1-A1\_E.DWG

STANDARD DIM.  
TOL. IN INCH

.X  
.XX  
.XXX

[ ] METRIC DIM.  
AS REF.

UNIT : INCH [mm]  
SCALE : N/A  
SIZE : A4

REV. : E

PAGE : 2



**bel** MAGNETIC SOLUTIONS  
a bel group

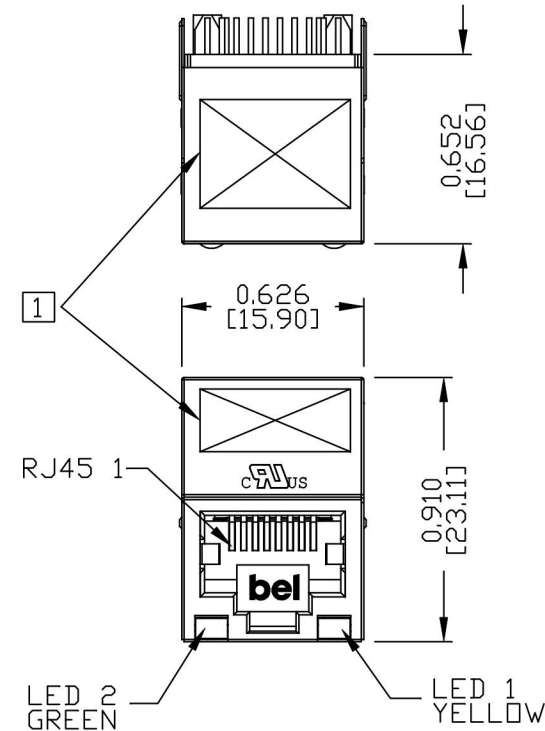
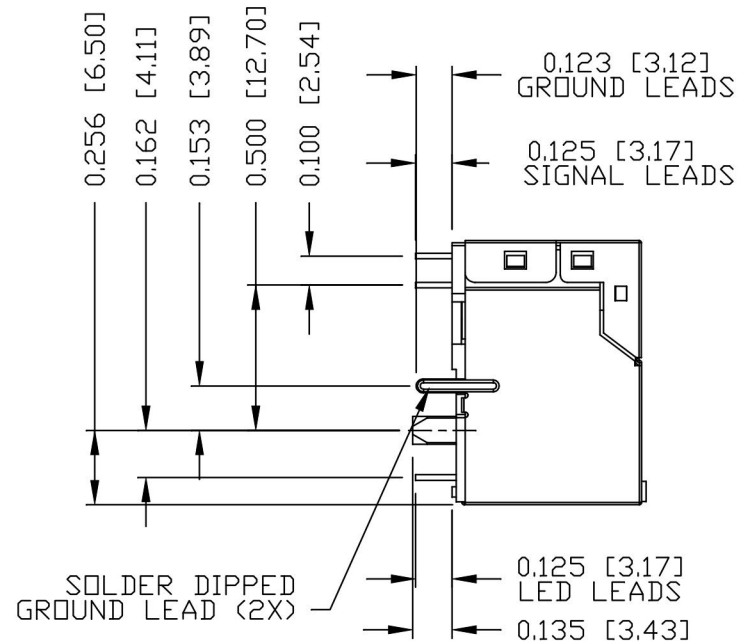
Additional Resources: [Product Page](#) [3D Model](#) [PCB Footprint](#) [Technical Documentation](#)

THE INFORMATION CONTAINED HEREIN IS CONSIDERED "PROPRIETARY" TO BEL FUSE INC. AND SHALL NOT BE COPIED, REPRODUCED OR DISCLOSED WITHOUT THE WRITTEN APPROVAL OF BEL FUSE INC.

# MECHANICAL SPECIFICATION

RoHS


Additional Resources: [Product Page](#) [3D Model](#) [PCB Footprint](#) [Technical Documentation](#)



## NOTES:

- PLASTIC HOUSING: THERMOPLASTIC PBT.  
FLAMMABILITY RATING UL 94V-0
- CONTACTS: 30 MICRO-INCH HARD GOLD PLATING OR EQUIVALENT.
- OUTPUT PINS: TIN-COATED COPPER WIRE, DIA 0.018 INCH.
- METAL SHIELD: NICKEL PLATED ON COPPER ALLOY.  
(ALL GROUND LEADS ARE SOLDER DIPPED)
- JACK CAVITY CONFORMS TO FCC RULES AND REGULATIONS.
1. MARK PART WITH MFG LOGO, MFG NAME, PART NUMBER, DATE CODE AND PATENTED.
2. THE PRODUCT IS RoHS COMPLIANT.

- cULus UL RECOGNIZED - FILE #E196366 AND E169987.
3. THE PRODUCT IS PATENT PRODUCT, THE PATENT NUMBER ARE U.S. PAT. 5,736,910 AND U.S. PAT. 6,840,817.

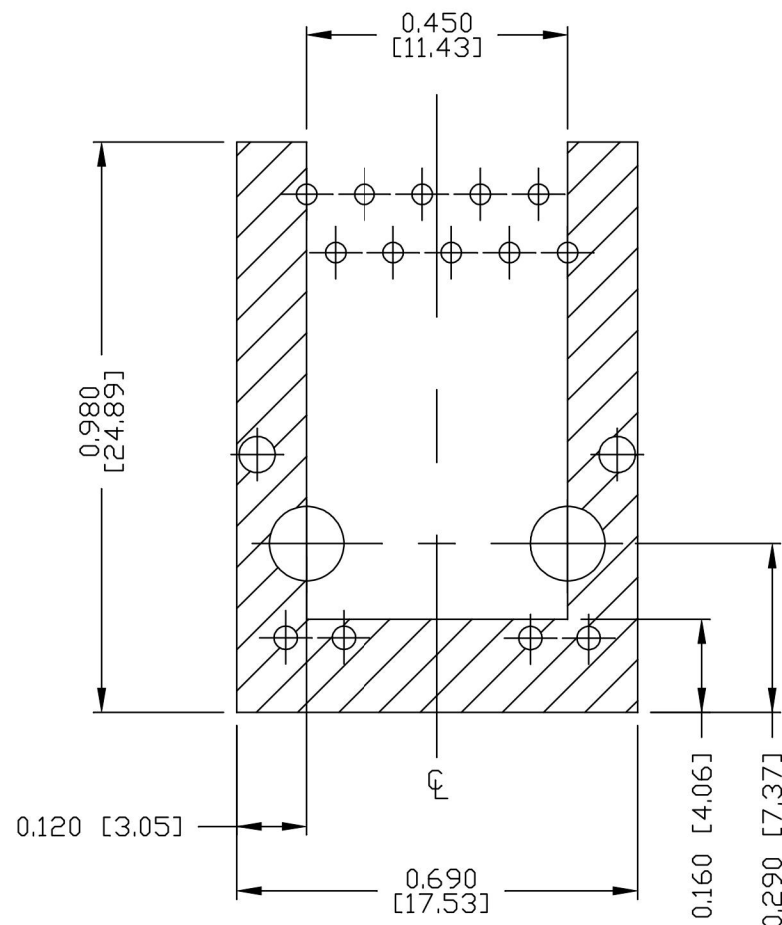
ORIGINATED BY ANTON LIAO DATE 2015-07-16	TITLE  gigabit MagJack® (8 core, Vertical) PATENTED	PART NO. / DRAWING NO.  V890-1AX1-A1	STANDARD DIM. TOL. IN INCH		[ ] METRIC DIM. AS REF.	 <b>bel</b> MAGNETIC SOLUTIONS a bel group
DRAWN BY LIU DONGJUN DATE 2015-07-16		FILE NAME  V890-1AX1-A1_E.DWG	.X		UNIT : INCH [mm]	
.XX			SCALE : N/A			
		.XXX	±0.010		SIZE : A4	

THE INFORMATION CONTAINED HEREIN IS CONSIDERED  
 'PROPRIETARY' TO BEL FUSE INC. AND SHALL NOT BE  
 COPIED, REPRODUCED OR DISCLOSED WITHOUT THE  
 WRITTEN APPROVAL OF BEL FUSE INC.

RoHS



Additional Resources: [Product Page](#) [3D Model](#) [PCB Footprint](#) [Technical Documentation](#)



# NOTES

THE SHADED AREA ON THE CUSTOMER BOARD ARE  
 RECOMMENDED TO BE CLEAR OFF ANY VIA HOLE OR  
 COMPONENT PAD.

ORIGINATED BY  
 ANTON LIAO  
 DATE 2015-07-16

DRAWN BY  
 LIU DONGJUN  
 DATE 2015-07-16

TITLE  
 gigabit MagJack®  
 (8 core, Vertical)  
 PATENTED

PART NO. / DRAWING NO.  
 V890-1AX1-A1

FILE NAME  
 V890-1AX1-A1\_E.DWG

STANDARD DIM.  
 TOL. IN INCH

.X	
.XX	
.XXX	±0.004

[ ] METRIC DIM.  
 AS REF.

UNIT : INCH [mm]  
 SCALE : N/A  
 SIZE : A4

REV. : E

PAGE : 4



**bel** MAGNETIC  
 SOLUTIONS  
 a bel group

THE INFORMATION CONTAINED HEREIN IS CONSIDERED  
"PROPRIETARY" TO BEL FUSE INC. AND SHALL NOT BE  
COPIED, REPRODUCED OR DISCLOSED WITHOUT THE  
WRITTEN APPROVAL OF BEL FUSE INC.

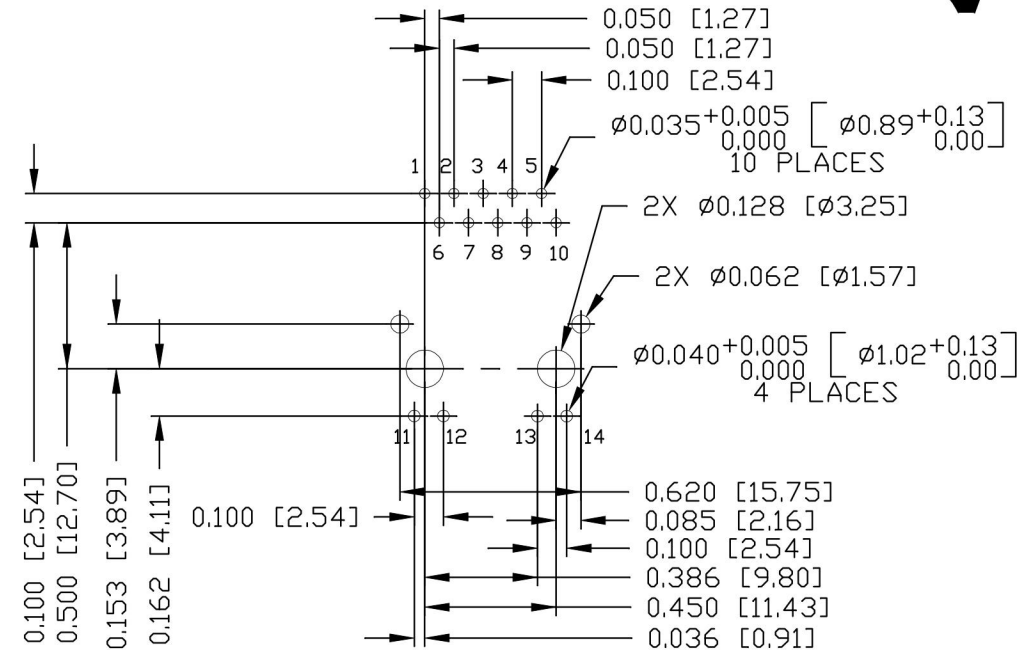
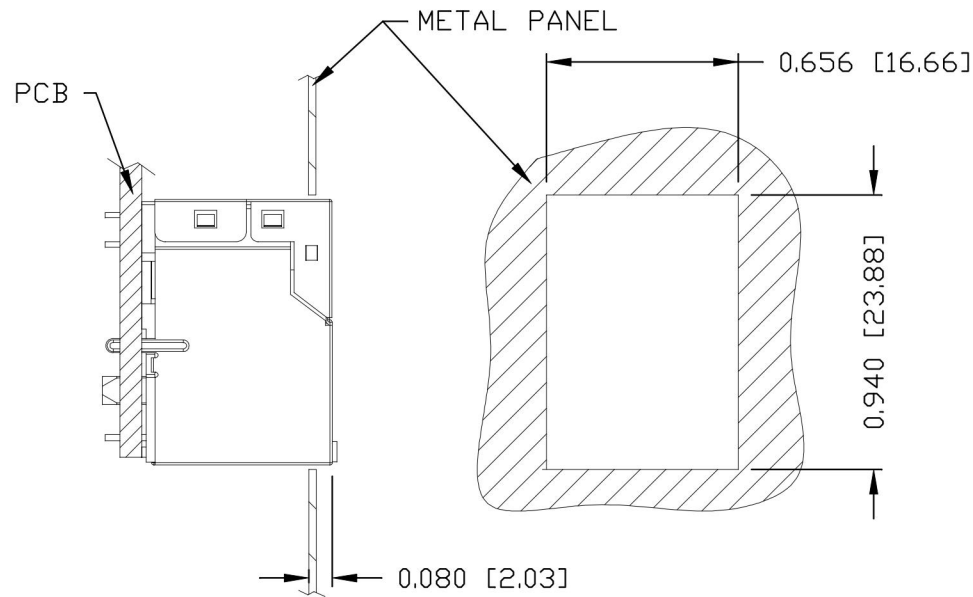
RECOMMENDED PCB FOOTPRINT  
COMPONENT SIDE VIEW

RoHS



Additional Resources: [Product Page](#) [3D Model](#) [PCB Footprint](#) [Technical Documentation](#)

SUGGESTED PANEL OPENING



NOTES:

THE DISTANCE OF PANEL INSIDE SURFACE RELATIVE TO FRONT SURFACE OF PART IS ONLY A SUGGESTION.  
IN CASE THIS DISTANCE IS DIFFERENT, THE REQUIRED PANEL OPENING DIMENSIONS CHANGE ACCORDINGLY.

PACKING INFORMATION

PACKING TRAY : 0200-9999-I3(TOP)

0200-9999-I4(BOTTOM)

PACKING QUANTITY : 55 PCS FINISHED GOODS PER TRAY  
9 TRAYS (495 PCS FINISHED GOODS)  
PER CARTON BOX

NOTES: CARDBOARDS ARE PLACED BETWEEN LAYERS  
OF PACKING TRAY INSIDE CARTON BOX  
(INCLUDE THE UPPERMOST AND LOWERMOST TRAY)

ORIGINATED BY  
ANTON LIAO  
DATE 2015-07-16

DRAWN BY  
LIU DONGJUN  
DATE 2015-07-16

TITLE  
gigabit MagJack®  
(8 core, Vertical)  
PATENTED

PART NO. / DRAWING NO.  
V890-1AX1-A1

FILE NAME  
V890-1AX1-A1\_E.DWG

STANDARD DIM.  
TOL. IN INCH

.X  
.XX  
.XXX

[ ] METRIC DIM.  
AS REF.

UNIT : INCH [mm]  
SCALE : N/A  
SIZE : A4

REV. : E

PAGE : 5



**bel** MAGNETIC  
SOLUTIONS  
a bel group