

THE INFORMATION CONTAINED HEREIN IS CONSIDERED
"PROPRIETARY" TO BEL FUSE INC. AND SHALL NOT BE
COPIED, REPRODUCED OR DISCLOSED WITHOUT THE
WRITTEN APPROVAL OF BEL FUSE INC.

RoHS

ELECTRICAL CHARACTERISTICS @ 25°C

TURNS RATIO

TX 1CT : 1

RX 1CT : 1

OCL @ 100kHz/100mVRMS

8mA DC BIAS 350 μ H MIN.

INS. LOSS

1MHz TO 100MHz -1.0 dB MAX

RET. LOSS (MIN)

1MHz-30MHz -18 dB

30MHz-60MHz -18+20LOG(F/30MHz) dB

60MHz-80MHz -12 dB

CROSS TALK (TX - RX)

500kHz-1MHz -70 dB MIN

10 MHz -50 dB MIN

30 MHz -45 dB MIN

50 MHz -40 dB MIN

100 MHz -35 dB MIN

CM TO CM REJ

100kHz-1MHz -70 dB MIN

10 MHz -47 dB MIN

30 MHz -42 dB MIN

60 MHz -37 dB MIN

100 MHz -30 dB MIN

CM TO DM REJ

100kHz-1MHz -70 dB MIN

10 MHz -60 dB MIN

30 MHz -50 dB MIN

60 MHz -45 dB MIN

100 MHz -40 dB MIN

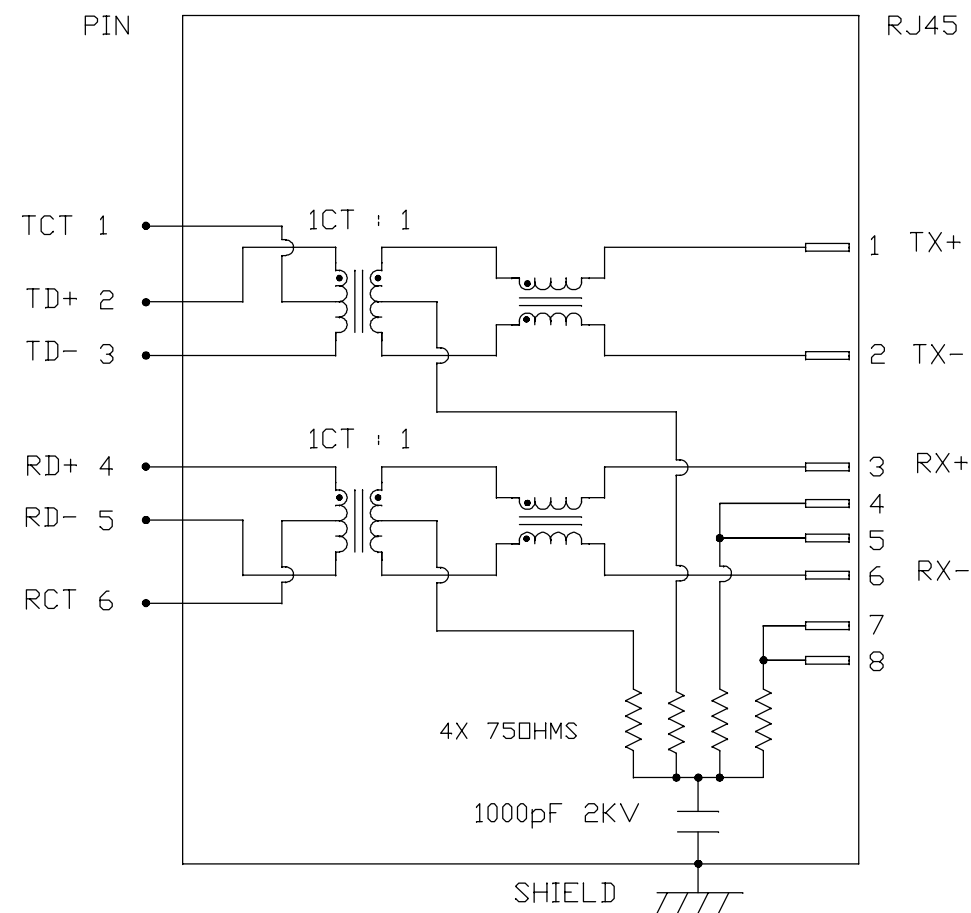
HIPOT (Isolation Voltage):

1500 Vrms or 2250VDC

100% OF PRODUCTION TESTED TO COMPLY WITH

IEEE 802.3 ISOLATION REQUIREMENTS.

OPERATING TEMPERATURE: 0°C TO +70°C.

SCHEMATIC

ORIGINATED BY
CHOW WANCHUNG
DATE 2017-03-10

TITLE

SMD MagJack®
(4 Cores,MDIX,CM Termination)
S811-1X1T-06-F

PART NO. / DRAWING NO.

S8111X1T06-F

FILE NAME

S8111X1T06-F_G.DWG

STANDARD DIM.
TOL. IN INCH

.X

.XX

.XXX

[] METRIC DIM.
AS REF.

UNIT : INCH [mm]

SCALE : N/A

SIZE : A4

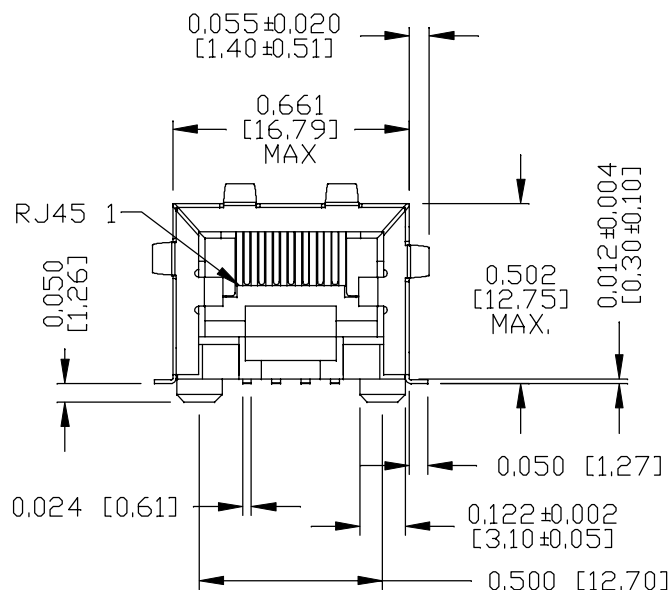
REV. : G

PAGE : 2

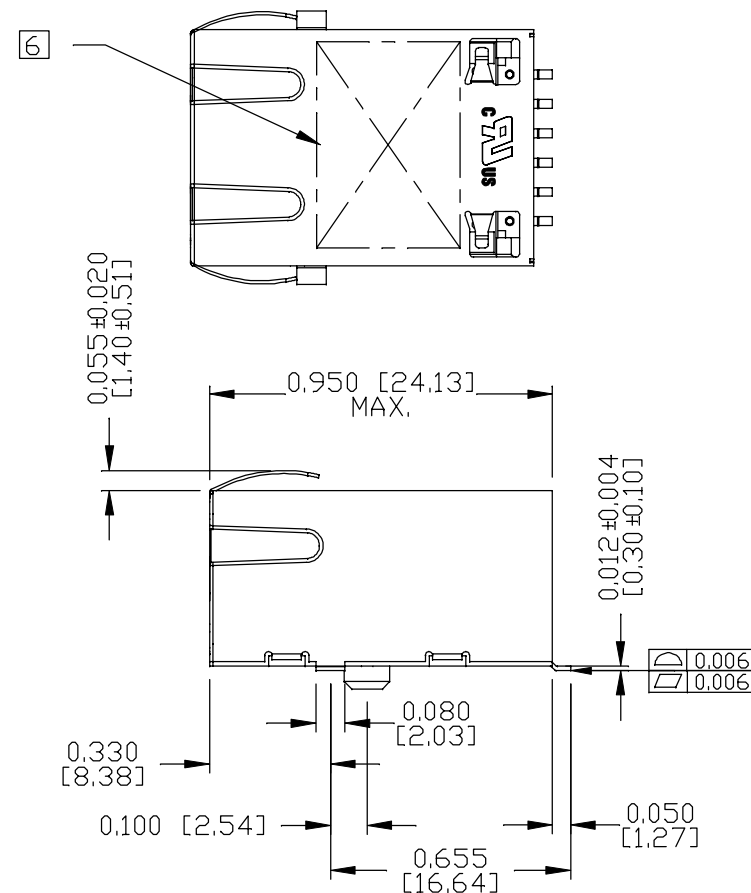


a bel group

THE INFORMATION CONTAINED HEREIN IS CONSIDERED "PROPRIETARY" TO BEL FUSE INC. AND SHALL NOT BE COPIED, REPRODUCED OR DISCLOSED WITHOUT THE WRITTEN APPROVAL OF BEL FUSE INC.

**NOTES:**

1. PLASTIC HOUSING: THERMOPLASTIC PA & THERMOSET PHENOLIC. BLACK FLAMMABILITY RATING UL 94V-0
2. CONTACTS PLATING: 50 MICRO-INCH HARD GOLD PLATING OR EQUIVALENT.
3. PINS: TIN-COATED COPPER WIRE, 0.024 [0.6] X 0.012 [0.3] THK. 100 MICRO-INCH MIN MATTE TIN. PINS ARE SOLDER DIPPED.
4. METAL SHIELD: NICKEL PLATED COPPER ALLOY.
5. JACK CAVITY CONFORMS TO FCC RULES AND REGULATIONS.
6. MARK PART WITH MFG. LOGO, MFG. NAME, PART NUMBER AND DATE CODE.



7. THE PRODUCT IS RoHS COMPLIANT.

cULus UL RECOGNIZED - FILE #E196366 AND E169987.

8. THE PART IS RECOMMENDED FOR WAVE SOLDERING. THE SUGGESTED PEAK WAVE SOLDERING CONDITION IS 260°C MAX AND 10 SECONDS MAX.

ORIGINATED BY
SANDY LIN
DATE 2017-03-10

TITLE
SMD MagJack®
(4 Cores,MDIX,CM Termination)
S811-1X1T-06-F

DRAWN BY
XUE RIPING
DATE 2017-03-10

PART NO. / DRAWING NO.
S811X1T06-F

FILE NAME
S811X1T06-F_G.DWG

STANDARD DIM. TOL. IN INCH		[] METRIC DIM. AS REF.
.X		UNIT : INCH [mm]
.XX		SCALE : N/A
.XXX	±0.010	SIZE : A4

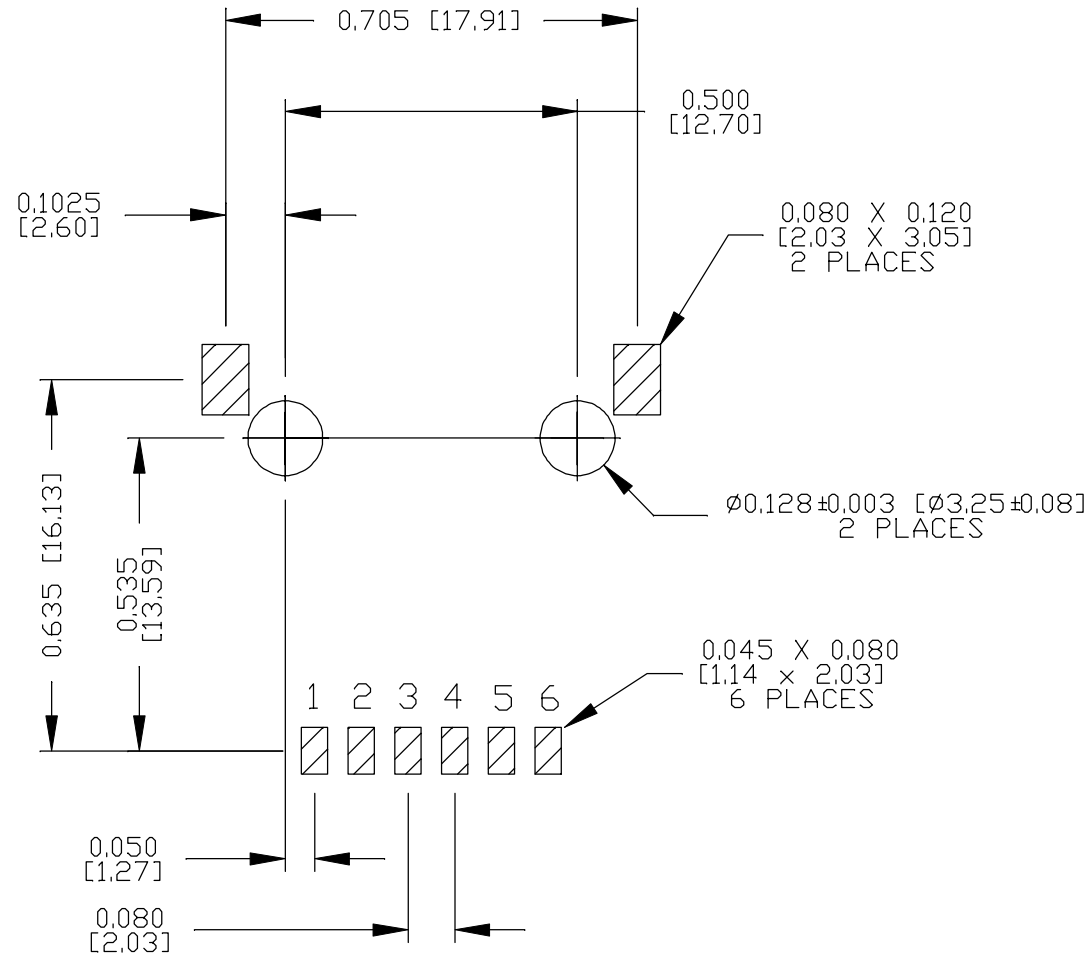
REV. : G PAGE : 3



THE INFORMATION CONTAINED HEREIN IS CONSIDERED "PROPRIETARY" TO BEL FUSE INC. AND SHALL NOT BE COPIED, REPRODUCED OR DISCLOSED WITHOUT THE WRITTEN APPROVAL OF BEL FUSE INC.



RECOMMENDED PCB FOOTPRINT
COMPONENT SIDE VIEW



ORIGINATED BY
SANDY LIN
DATE 2017-03-10

DRAWN BY
XUE RIPING
DATE 2017-03-10

TITLE
SMD MagJack ®
(4 Cores,MDIX,CM Termination)
S811-1X1T-06-F

PART NO. / DRAWING NO.
S8111X1T06-F

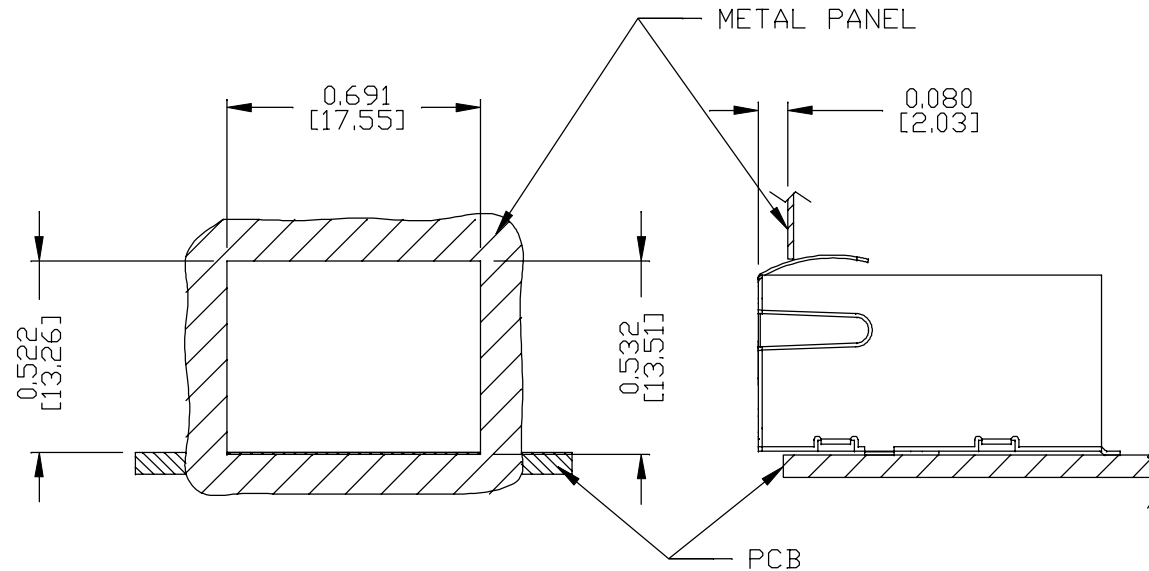
FILE NAME
S8111X1T06-F_G.DWG

STANDARD DIM. TOL. IN INCH		[] METRIC DIM. AS REF.
.X		UNIT : INCH [mm]
.XX		SCALE : N/A
.XXX	±0.004	SIZE : A4




REV. : G	PAGE : 4
----------	----------


bel MAGNETIC SOLUTIONS
a bel group

THE INFORMATION CONTAINED HEREIN IS CONSIDERED "PROPRIETARY" TO BEL FUSE INC. AND SHALL NOT BE COPIED, REPRODUCED OR DISCLOSED WITHOUT THE WRITTEN APPROVAL OF BEL FUSE INC.

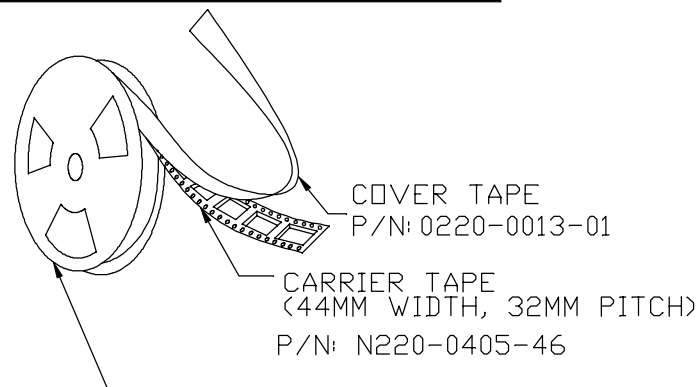
RoHSSUGGESTED PANEL OPENING**NOTES:**

THE DISTANCE OF PANEL INSIDE SURFACE RELATIVE TO FRONT SURFACE OF PART IS ONLY A SUGGESTION.
IN CASE THIS DISTANCE IS DIFFERENT, THE REQUIRED PANEL OPENING DIMENSIONS CHANGE ACCORDINGLY.

REV. : G				PAGE : 5	
ORIGINATED BY SANDY LIN DATE 2017-03-10	TITLE SMD MagJack® (4 Cores,MDIX,CM Termination) S811-1X1T-06-F	PART NO. / DRAWING NO. S8111X1T06-F	STANDARD DIM. [] METRIC DIM.		
			TOL. IN INCH AS REF.		
		.X		UNIT : INCH [mm]	
		.XX		SCALE : N/A	
DRAWN BY XUE RIPING DATE 2017-03-10		FILE NAME S8111X1T06-F_G.DWG	.XXX		#0,004
					SIZE : A4
<div></div>					



THE INFORMATION CONTAINED HEREIN IS CONSIDERED "PROPRIETARY" TO BEL FUSE INC. AND SHALL NOT BE COPIED, REPRODUCED OR DISCLOSED WITHOUT THE WRITTEN APPROVAL OF BEL FUSE INC.

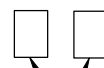
RoHS

PLASTIC REEL
(OUTSIDE DIA.= 15", HUB DIA.= 4")

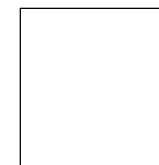
P/N: 0210-0005-01/02

NOTES:

- 1) LEAVES 48 INCHES COVER TAPE AND 5 EMPTY POCKETS AT TRAILER.
- 2) LEAVES 24 INCHES COVER TAPE AND 13 EMPTY POCKETS AT LEADER.
- 3) PACK 175 PCS PER REEL.
- 4) EACH BAGS SHOULD HAVE TWO BAGS SILICA GEL INSIDE MOISTURE BARRIER BAG, & VACUUM SEALED
- 5) EACH PIZZA BOX CONTAINS ONE (1) MOISTURE BARRIER BAG, (175 PCS FINISHED GOODS EACH PIZZA BOX).
- 6) EACH OUTER CARTON CONTAINS SIX (6) PIZZA BOXES, (1050 PCS FINISHED GOODS EACH OUTER CARTON).

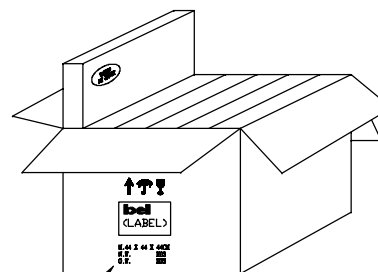


2 BAGS SILICA GEL
P/N: 0036-0010-03

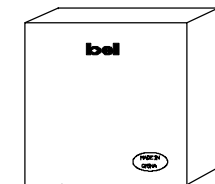


MOISTURE BARRIER BAG
(20.5"L X 19"W)
P/N: 0200-0143-17

VACUUM SEALED

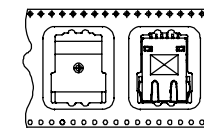


OUTER CARTON
(17"L X 17"W X 17"H)
P/N: 0200-9999-22





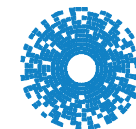
PIZZA BOX
(16"L X 16"W X 2.5"H)
P/N: 0200-1620-A1

USER FEED DIRECTION



PART ORIENTATION & FEEDING DIRECTION.

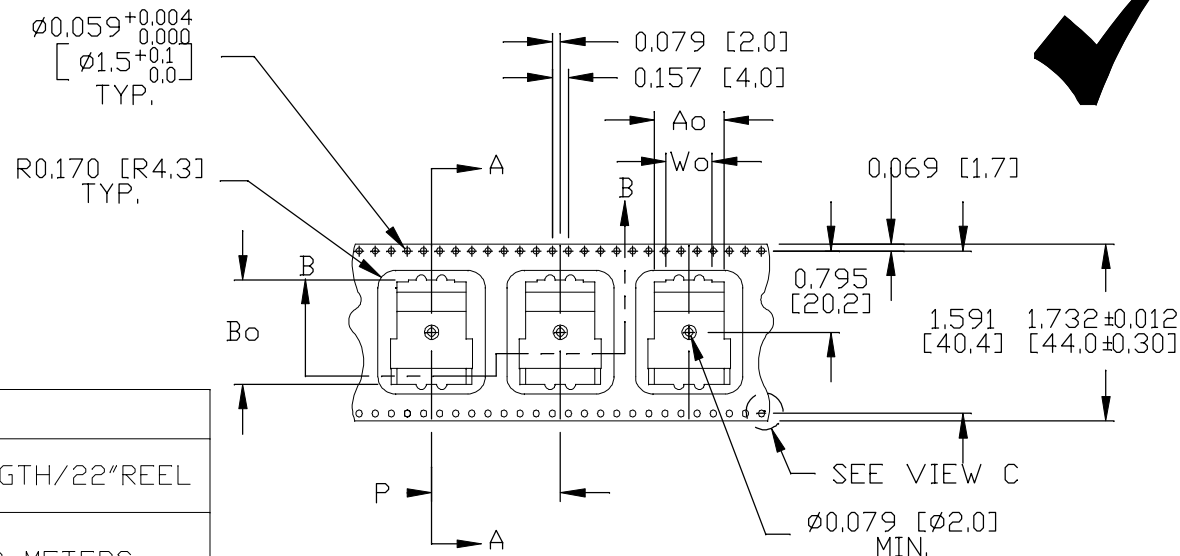
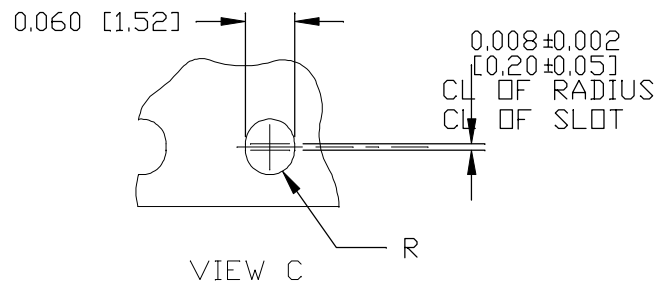
ORIGINATED BY SANDY LIN DATE 2017-03-10		TITLE SMD MagJack® (4 Cores,MDIX,CM Termination) S811-1X1T-06-F	PART NO. / DRAWING NO. S8111X1T06-F		STANDARD DIM. TOL. IN INCH		[] METRIC DIM. AS REF.	
DRAWN BY XUE RIPING DATE 2017-03-10			FILE NAME S8111X1T06-F_G.DWG		.X		UNIT : INCH [mm]	
					.XX		SCALE : N/A	
					.XXX		⊕  SIZE : A4	
					 bel MAGNETIC SOLUTIONS a bel group			



bel MAGNETIC SOLUTIONS
a bel group

THE INFORMATION CONTAINED HEREIN IS CONSIDERED "PROPRIETARY" TO BEL FUSE INC. AND SHALL NOT BE COPIED, REPRODUCED OR DISCLOSED WITHOUT THE WRITTEN APPROVAL OF BEL FUSE INC.

RoHS

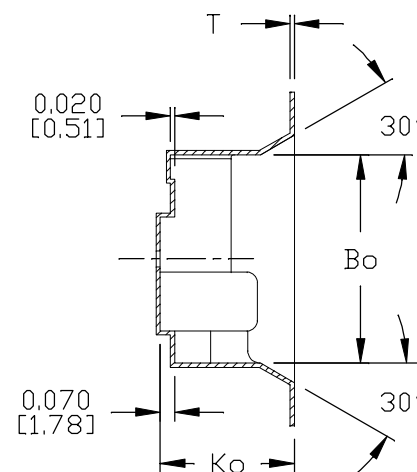


DIMENSION CHART

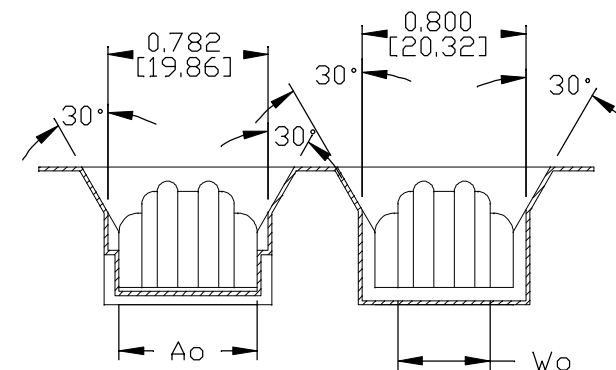
PART NUMBER	Ao	Bo	Ko	P	Wo	T	LENGTH/22"REEL
N220-0405-46	0.670 [17.02]	1.010 [25.65]	0.635 [16.13]	1.260 [32.00]	0.505 [12.83]	0.020 [0.50]	13 METERS

NOTES :

- ALL OTHER SPECIFICATIONS SHOULD MEET EIA 481-D STANDARD.




SECTION A-A



SECTION B-B

ORIGINATED BY SANDY LIN DATE 2017-03-10	TITLE SMD MagJack® (4 Cores,MDIX,CM Termination) S811-1X1T-06-F	PART NO. / DRAWING NO. S8111X1T06-F	STANDARD DIM. TOL. IN INCH		[] METRIC DIM. AS REF.	
DRAWN BY XUE RIPING DATE 2017-03-10		FILE NAME S8111X1T06-F_G.DWG	.X		UNIT : INCH [mm]	
			.XX		SCALE : N/A	
			.XXX		SIZE : A4	



bel
a bel group

**MAGNETIC
SOLUTIONS**

REV. : G PAGE : 7



THE INFORMATION CONTAINED HEREIN IS CONSIDERED "PROPRIETARY" TO BEL FUSE INC. AND SHALL NOT BE COPIED, REPRODUCED OR DISCLOSED WITHOUT THE WRITTEN APPROVAL OF BEL FUSE INC.

RoHS

MOISTURE BARRIER BAG

OPEN HERE

20.0 [508.00]

18.0 [457.20]

NOTES:

1. MATERIAL : BI-LAYER LALMINATED MATERIAL
CONTAINS NYLON & POLYETHYLENE.
2. MATERIAL THICKNESS : 0.003±0.0008".
3. COLOR : TRANSPARENT.
4. ALL DIMENSIONS REFER TO INSIDE DIMENSIONS.
5. 3 SIDES SEALING WITH 0.30 MINIMUM SEALING WIDTH
6. PRODUCT SPECIFIED HEREIN AND IT'S PACKING MATERIAL SUPPLIED
TO BELFUSE MUST MEET EU RoHS REQUIREMENT.

REV. : G PAGE : 8

ORIGINATED BY
SANDY LIN
DATE 2017-03-10

DRAWN BY
XUE RIPING
DATE 2017-03-10

TITLE
SMD MagJack®
(4 Cores,MDIX,CM Termination)
S811-1X1T-06-F

PART NO. / DRAWING NO.
S8111X1T06-F

FILE NAME
S8111X1T06-F_G.DWG

STANDARD DIM.
TOL. IN INCH

.X ±0.1

.XX

.XXX

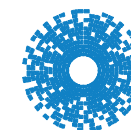
[] METRIC DIM.
AS REF.

UNIT : INCH [mm]

SCALE : N/A



SIZE : A4



bel MAGNETIC
SOLUTIONS
a bel group