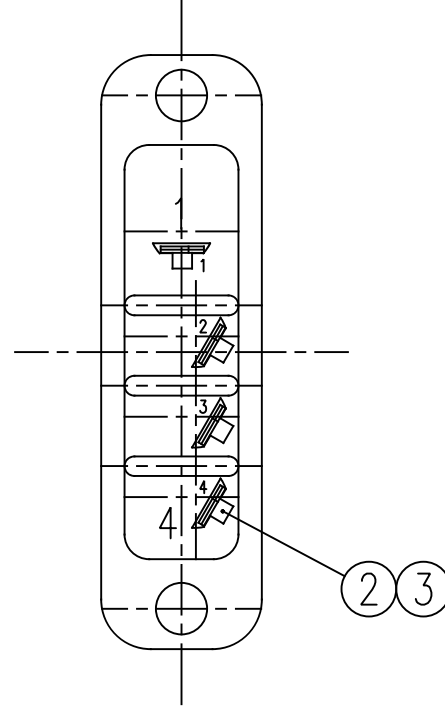
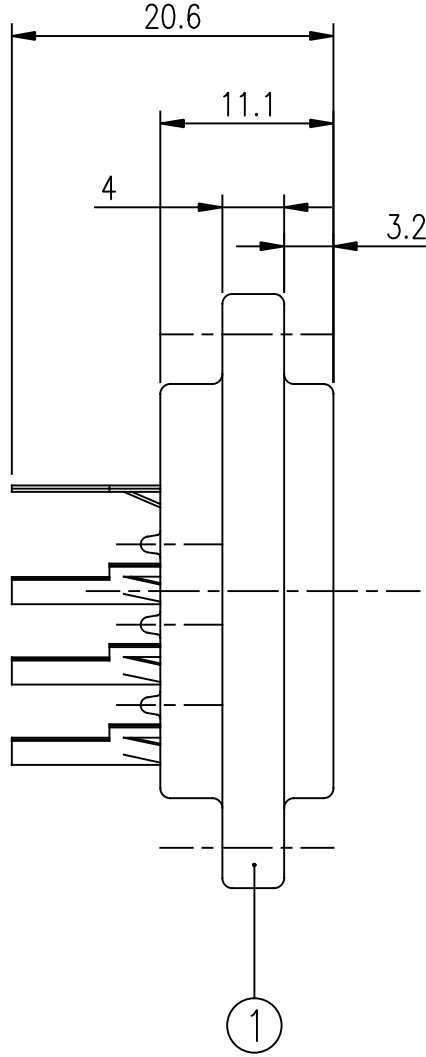
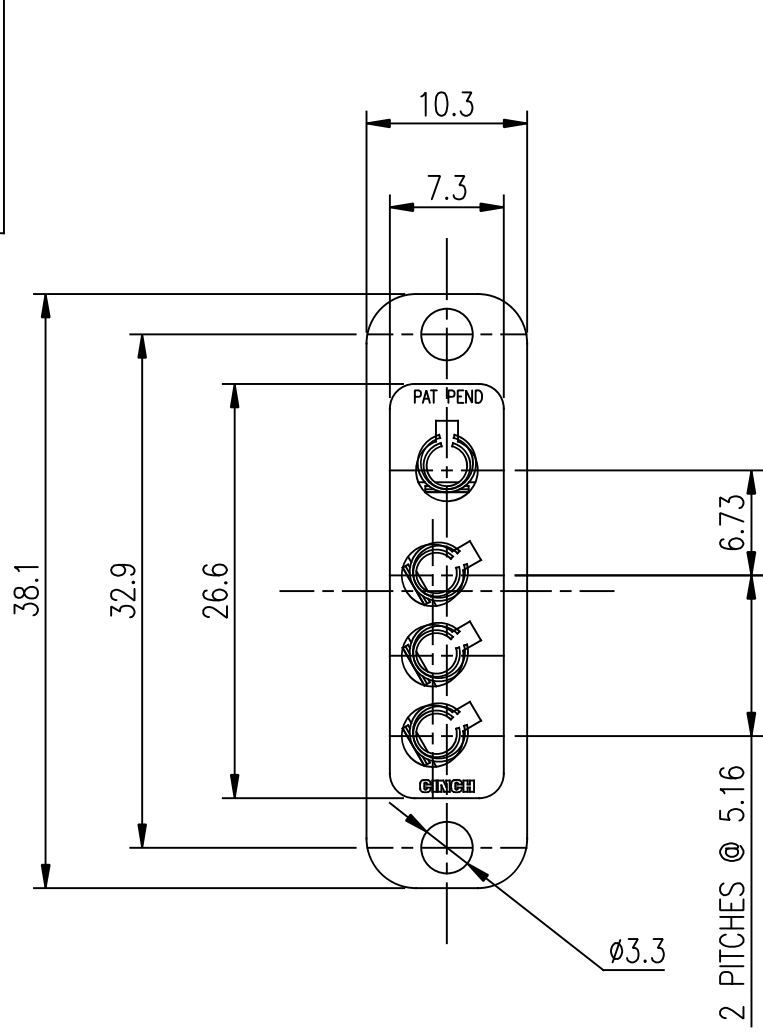


1	2	3	4	5	6	7
CINCH Connectors Ltd. WORKSOP, ENGLAND						
RELEVANT SPEC. 77845 00 000 000 000 SHEET 1 OF 1						
CAD No: G:JA7784500000000						
IF IN DOUBT - ASK ALL DIMENSIONS ARE IN mm						

CUSTOMER DRAWING ONLY.



NOTES:

1. ALL DIMENSIONS ARE REFERENCE ONLY UNLESS STATED OTHERWISE.

THIS DRAWING IS COPYRIGHT AND IS ISSUED ON CONDITION IT IS NOT COPIED, REPRODUCED OR DISCLOSED TO A THIRD PARTY WITHOUT THE CONSENT IN WRITING OF CINCH CONNECTORS LTD. ATTENTION IS DRAWN TO THE FACT THAT THE ARTICLE DISCLOSED MAY BE COVERED BY BRITISH OR FOREIGN PATENTS, GRANTED OR PENDING OR REGISTERED DESIGN.

APP'D	DATE	MOD No.	ISSUE
	06.06.07	4	A
GENERAL TOLERANCE			
TITLE J-TYPE 4 WAY SOCKET CONNECTOR ASSEMBLY			
DRN. R. MUSCROFT	DATE 06.06.07	SCALE 2:1	CHD
RAW MATERIAL	MATERIAL SPEC.		APP'D
FINISHED HARDNESS	FINISH TREATMENT	FINISHED COLOUR	

CODE	DESCRIPTION	FINISH	No. OFF
	CONTACT	BRIGHT TIN	4
	CONTACT	BRIGHT TIN	4
	4W INSULATOR	G.F.POLYESTER	1
		ITEM	