

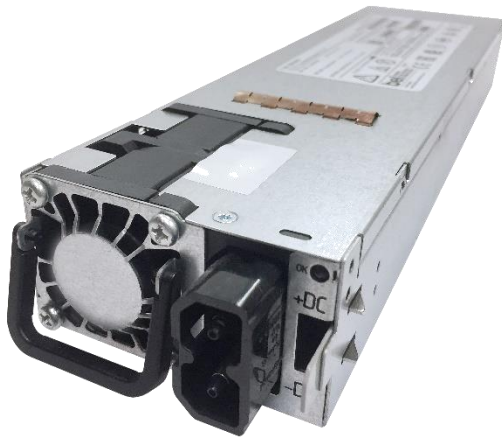
# PET1600-12-074xD

## DC-DC Front-End Power Supply

The PET1600-12-074xD is a 1600 Watt DC to DC power supply that converts -40 to -72 VDC voltage into an isolated main output of +12 VDC for powering intermediate bus architectures (IBA) in high performance and reliability servers, routers, and network switches.

The PET1600-12-074xD utilizes full digital control architecture for greater efficiency, control, and functionality.

This power supply meets international safety standards.



### Key Features & Benefits

- Best-in-class, “Platinum” equivalent efficiency
- Wide input voltage range: -40 to -72 VDC
- Always-On 12 V / 3 A / 36 W standby output
- Hot-plug capable
- Parallel operation with active current sharing
- Full digital controls for improved performance
- High density design: 34 W/in<sup>3</sup>
- Small form factor: 265 x 73.5 x 40.0 mm (10.43 x 2.89 x 1.57 in)
- Power Management Bus communication protocol for control, programming and monitoring
- Status LED with fault signaling

### Applications

- Networking Switches
- Servers & Routers
- Telecommunications



## 1. ORDERING INFORMATION

PET	1600	-	12	-	074	x	D	x
Product Family	Power Level	Dash	V1 Output	Dash	Width	Airflow	Input	DC Inlet
PET Front-Ends	1600 W		12 V		74 mm	N: Normal <sup>1</sup> R: Reverse <sup>2</sup>	D: DC	- - Black, 6 AWG (C10-747100) * K - Black, 4 AWG (C10-747442) Y - Grey, 6 AWG (C10-638974)

- <sup>1</sup> "N" Normal Airflow (NAF) from Output connector to Input DC Inlet.  
<sup>2</sup> "R" Reverse Airflow (RAF) from Input DC Inlet to Output connector.  
 \* Default option – no suffix needed.  
 Input plug with wire: Amphenol # CR-302001-257

## 2. OVERVIEW

The PET1600-12-074xD DC-DC power supply is a fully DSP controlled, highly efficient front-end power supply. It incorporates state-of-the-art technology and uses an interleaved forward converter topology with active clamp and synchronous rectification to reduce component stresses, thus providing increased system reliability and very high efficiency.

With a wide input DC voltage range the PET1600-12-074xD maximizes power availability in demanding server, network, and other high availability applications. The supply is fan cooled and ideally suited for integration with a matching airflow path.

An active OR-ing device on the output ensures no reverse load current and renders the supply ideally suited for operation in redundant power systems.

The always-on standby output provides power to external power distribution and management controllers. It is protected with an active OR-ing device for maximum reliability.

Status information is provided with a front-panel LED. In addition, the power supply can be controlled and the fan speed set via the I<sup>2</sup>C bus. The I<sup>2</sup>C bus allows full monitoring of the supply, including input and output voltage, current, power, and inside temperatures. Cooling is managed by a fan controlled by the DSP controller. The fan speed is adjusted automatically depending on the actual power demand and supply temperature and can be overridden through the I<sup>2</sup>C bus.

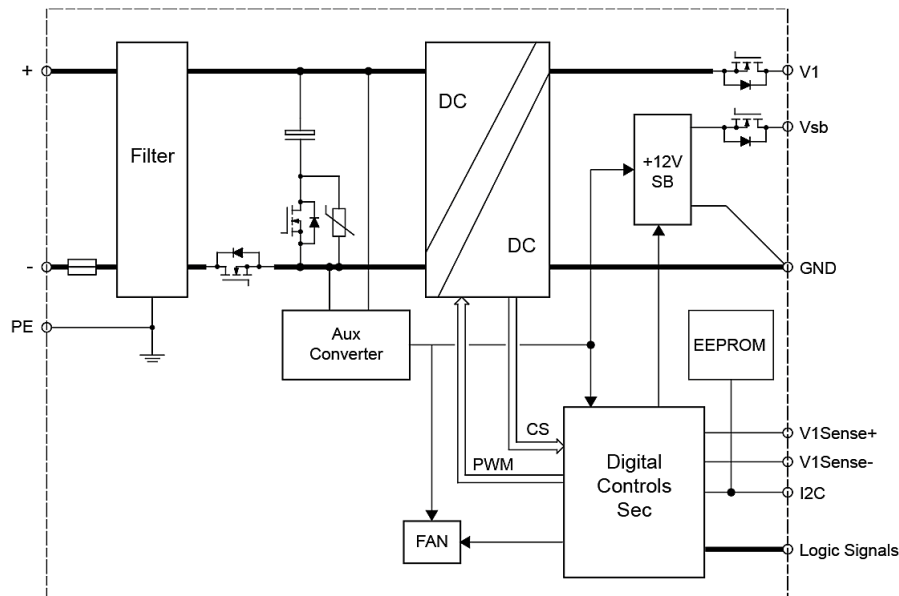


Figure 1. Block Diagram

### 3. ABSOLUTE MAXIMUM RATINGS

Stresses in excess of the absolute maximum ratings may cause performance degradation, adversely affect long-term reliability and cause permanent damage to the supply.

PARAMETER	CONDITIONS / DESCRIPTION	MIN	MAX	UNITS
<i>V<sub>i max</sub></i>	Maximum Input Voltage Continuous		-72	VDC

### 4. INPUT

General Condition: T<sub>A</sub> = -5...45 °C (PET1600-12-074RD), T<sub>A</sub> = -5...55 °C (PET1600-12-074ND), unless otherwise noted.

PARAMETER	DESCRIPTION / CONDITION	MIN	NOM	MAX	UNIT
<i>V<sub>i start</sub></i>	Minimum Operating Input Voltage Stand-by output available, DSP running	-32			VDC
<i>V<sub>i nom</sub></i>	Nominal Input Voltage	-48	-53	-60	VDC
<i>V<sub>i</sub></i>	Input Voltage Normal operation (from <i>V<sub>i min</sub></i> to <i>V<sub>i max</sub></i> )	-40		-72	VDC
<i>i<sub>i</sub></i>	Input Current <i>V<sub>i</sub></i> > <i>V<sub>i min</sub></i>			47	A
<i>i<sub>i pk</sub></i>	Inrush Current Limitation From <i>V<sub>i min</sub></i> to <i>V<sub>i max</sub></i> , T <sub>A</sub> = 25°C, turn on		40	55	A
<i>V<sub>i on</sub></i>	Turn-On Standby Input Voltage Ramping up		-31.5		VDC
<i>V<sub>i on</sub></i>	Turn-On Input Voltage Ramping up	-41		-42.5	VDC
<i>V<sub>i off</sub></i>	Turn-Off Input Voltage Ramping down	-38.0		-39.5	VDC
<i>η</i>	Efficiency	<i>V<sub>i</sub></i> = -48 VDC; 20% load		93	%
		<i>V<sub>i</sub></i> = -48 VDC; 50% load		95	%
		<i>V<sub>i</sub></i> = -48 VDC; 100% load		93	%
<i>Thold_V1</i>	Hold-Up Time V1 T <sub>A</sub> = 25°C, <i>V<sub>i</sub></i> = -48 VDC; <i>I<sub>1</sub></i> = 133 A, <i>I<sub>SB nom</sub></i> , <i>C<sub>ext</sub></i> = 2200 μF	5	6		ms
<i>Thold_Vsb</i>	Hold-Up Time Vsb T <sub>A</sub> = 25°C, <i>V<sub>i</sub></i> = -48 VDC; <i>I<sub>1</sub></i> = 133 A, <i>I<sub>SB nom</sub></i> , <i>C<sub>ext</sub></i> = 2200 μF	6			ms

#### 4.1 INPUT FUSE

A fast-acting 80 A input fuse in the negative voltage path inside the power supply protect against severe defects. The fuse is not accessible from the outside and are therefore not serviceable parts.

#### 4.2 INRUSH CURRENT

Internal bulk capacitors will be charged through resistors connected from bulk cap minus pin to the DC rail minus, thus limiting the inrush current. After the inrush phase, NTC resistors are then shorted with MOSFETs connected in parallel. The Inrush control is managed by the digital controller (DSP).

#### 4.3 INPUT UNDER-VOLTAGE

If the value of input DC voltage stays below the input under voltage lockout threshold *V<sub>i on</sub>*, the supply will be inhibited. Once the input voltage returns within the normal operating range, the supply will return to normal operation again. If the input voltage stays below the input undervoltage lockout threshold *V<sub>i on</sub>*, the supply will be inhibited. Once the input voltage returns within the normal operating range, the supply will return to normal operation again.



## 5. OUTPUT

General Condition:  $T_A = -5...45\text{ °C}$  (PET1600-12-074RD),  $T_A = -5...55\text{ °C}$  (PET1600-12-074ND), unless otherwise noted.

PARAMETER	DESCRIPTION / CONDITION	MIN	NOM	MAX	UNIT	
<b>Main Output <math>V_1</math></b>						
$V_{1\text{ nom}}$	Nominal Output Voltage		12.0		VDC	
$V_{1\text{ set}}$	Output Setpoint Accuracy	-0.5		+0.5	% $V_{1\text{ nom}}$	
$dV_{1\text{ tot}}$	Total Static Regulation	$V_{1\text{ min}}$ to $V_{1\text{ max}}$ , 0 to 100% $I_{1\text{ nom}}$ , $T_A = -5$ to $55\text{ °C}$		-5	+5	% $V_{1\text{ nom}}$
$P_{1\text{ nom}}$	Nominal Output Power <sup>1</sup>	$V_{1\text{ min}}$ to $V_{1\text{ max}}$ , $T_A = -5$ to $55\text{ °C}$ (PET1600-12-074ND)		1600		W
		$V_{1\text{ min}}$ to $V_{1\text{ max}}$ , $T_A = -5$ to $45\text{ °C}$ (PET1600-12-074RD)		1600		W
		$V_{1\text{ min}}$ to $V_{1\text{ max}}$ , $T_A = 45$ to $55\text{ °C}$ (PET1600-12-074RD)		1200		W
$I_{1\text{ nom}}$	Output Current	$V_{1\text{ min}}$ to $V_{1\text{ max}}$ , $T_A = -5$ to $55\text{ °C}$ (PET1600-12-074ND)	0.0		133.3	ADC
		$V_{1\text{ min}}$ to $V_{1\text{ max}}$ , $T_A = -5$ to $45\text{ °C}$ (PET1600-12-074RD)	0.0		133.3	ADC
		$V_{1\text{ min}}$ to $V_{1\text{ max}}$ , $T_A = 45$ to $55\text{ °C}$ (PET1600-12-074RD)	0.0		100.0	ADC
$I_{1\text{ peak}}$	Peak Output Current	$V_{1\text{ min}}$ to $V_{1\text{ max}}$ ,	0.0	140		ADC
$V_{1\text{ pp}}$	Output Ripple Voltage <sup>2</sup>	$V_{1\text{ min}}$ to $V_{1\text{ max}}$ , 0 to 100% $I_{1\text{ nom}}$ , $C_{\text{ext}} \geq 1\text{ mF}$ /Low ESR			120	mVpp
$dV_{1\text{ load}}$	Load Regulation	$V_{1\text{ nom}}$ , 0 to 100% $I_{1\text{ nom}}$		-160		mV
$dV_{1\text{ line}}$	Line Regulation	$V_{1\text{ min}}$ to $V_{1\text{ max}}$ , $0.5 \cdot I_{1\text{ nom}}$	-20	0	20	mV
$dV_{1\text{ temp}}$	Thermal Drift	$V_{1\text{ nom}}$ , $0.5 \cdot I_{1\text{ nom}}$			-0.5	mV/°C
$dI_{1\text{ share}}$	Current Sharing	Deviation from $I_{1\text{ tot}} / N$ , $I_{1\text{ tot}} > 10\%$	-5		+5	ADC
$V_{\text{SHARE}}$	Current Share Bus Voltage	$V_{\text{share}}/I_{\text{out}}$		52.222		mV/A
$dV_{1\text{ lt}}$	Load Transient Response	$\Delta I = 40\%$ $I_{1\text{ nom}}$ , $I = 10 \dots 100\%$ $I_{1\text{ nom}}$ , $C_{\text{ext}} = 2\text{ mF}$ , $dI/dt = 1\text{ A}/\mu\text{s}$ , recovery within 1% of $V_{1\text{ nom}}$			0.6	VDC
$t_{\text{rec}}$	Recovery Time			1		ms
$V_{1\text{ dyn}}$	Dynamic Load Regulation	$\Delta I = 40\%$ $I_{1\text{ nom}}$ , starting anywhere from 10% to 60%, $f = 50 \dots 5000\text{ Hz}$ , Duty cycle = 10 ... 90%, $C_{\text{ext}} = 2 \dots 10\text{ mF}$ , $dI/dt = 1\text{ A}/\mu\text{s}$ , $25\text{ °C}$	11.4		12.6	V
$t_{V1\text{ on delay}}$	Delay time from DC applied	$V_1$ in regulation $V_i = 0\text{V}$ to $V_{1\text{ min}}$ , $V_{1\text{ nom}}$ , $V_{1\text{ max}}$			3	sec
$t_{V1\text{ rise}}$	Output Voltage Rise Time	$V_1 = 10 \dots 90\%$ $V_{1\text{ nom}}$ , $C_{\text{ext}} < 10\text{ mF}$		10	200	ms
$t_{V1\text{ ovr sh}}$	Output Turn-on Overshoot	$V_{1\text{ nom}}$ , 0 to 100% $I_{1\text{ nom}}$			13.2	V
$dV_{1\text{ sense}}$	Remote Sense	Compensation for cable drop, 0 to 100% $I_{1\text{ nom}}$			0.25	V
$C_{V1\text{ load}}$	Capacitive Loading		0.5		10	mF
$OVP$	Over voltage Trip	$V_{1\text{ min}}$ to $V_{1\text{ max}}$ ,	13.6		15.0	V

<sup>1</sup> See also chapter [TEMPERATURE AND FAN CONTROL](#)

<sup>2</sup> Measured with a 10  $\mu\text{F}$  low ESR capacitor in parallel with a 0.1  $\mu\text{F}$  ceramic capacitor at the point of measurement

Standby Output $V_{SB}$					
$V_{SB\ nom}$	Nominal Output Voltage	$I_{SB} = 1.5A$ (50% of $I_{SB\ nom}$ , 25°C, (PET1600-12-074ND))		12.0	VDC
$V_{SB\ set}$	Output Setpoint Accuracy	$I_{SB} = 1.5A$ (50% of $I_{SB\ nom}$ , 25°C, (PET1600-12-074RD))	-2	+2	% $V_{SB\ nom}$
$dV_{SB\ tot}$	Total Regulation	$V_{i\ min}$ to $V_{i\ max}$ , 0 to 100% $I_{SB\ nom}$	-5	+5	% $V_{SB\ nom}$
$P_{SB\ nom}$	Nominal Output Power	$V_{i\ min}$ to $V_{i\ max}$ , $T_A = -5$ to 65°C (PET1600-12-074ND)		36	W
		$V_{i\ min}$ to $V_{i\ max}$ , $T_A = -5$ to 55°C (PET1600-12-074RD)		36	W
$P_{SB\ peak}$	Peak Output Power	$V_{i\ min}$ to $V_{i\ max}$ (PET1600-12-074ND)		40	W
		$V_{i\ min}$ to $V_{i\ max}$ (PET1600-12-074RD)		40	W
$I_{SB\ nom}$	Output Current	$V_{i\ min}$ to $V_{i\ max}$ , $T_A = -5$ to 70°C (PET1600-12-074ND)	0		3.0
		$V_{i\ min}$ to $V_{i\ max}$ , $T_A = -5$ to 55°C (PET1600-12-074RD)	0		3.0
$I_{SB\ peak}$	Peak Output Current	$V_{i\ min}$ to $V_{i\ max}$ (PET1600-12-074ND)	3.4	3.8	5
		$V_{i\ min}$ to $V_{i\ max}$ (PET1600-12-074RD)	3.4	3.8	5
$V_{SB\ pp}$	Output Ripple Voltage <sup>2</sup>	$V_{i\ min}$ to $V_{i\ max}$ , 0 to 100% $I_{SB\ nom}$ , $C_{ext} = 0$ mF			120
		$V_{i\ min}$ to $V_{i\ max}$ , 0 to 100% $I_{SB\ nom}$ , $C_{ext} \geq 2$ mF/Low ESR			100
$dV_{SB\ load}$	Load Regulation	$V_{i\ nom}$ , 0 to 100% $I_{SB\ nom}$		-300	mV
$dV_{SB\ line}$	Line Regulation	$V_{i\ min}$ to $V_{i\ max}$ , $I_{SB} = 0$ A	-100		100
$dV_{SB\ temp}$	Thermal Drift	$V_{i\ nom}$ , $I_{SB} = 0$ A			-3
$dV_{SB\ lt}$	Load Transient Response	$\Delta I_{SB} = 50\%$ $I_{SB\ nom}$ , $I_{SB} = 0 \dots 100\%$ $I_{SB\ nom}$ , $dI_{SB}/dt = 1A/\mu s$ , recovery within 1% of $V_{SB\ nom}$			0.6
$t_{rec}$	Recovery Time			1	ms
$V_{SB\ dyn}$	Dynamic Load Regulation	$\Delta I_{SB} = 1$ A, $I_{SB} = 0 \dots I_{SB\ nom}$ , $f = 50 \dots 5000$ Hz, Duty cycle = 10 ... 90%, $C_{ext} = 0 \dots 1$ mF	11.4		12.6
$t_{V_{SB}\ rise}$	Output Voltage Rise Time	$V_{SB} = 10 \dots 90\%$ $V_{SB\ nom}$ , $C_{ext} < 1$ mF		10	30
$t_{V_{SB}\ ovr\ sh}$	Output Turn-on Overshoot	$V_{i\ nom}$ , 0 to 100% $I_{SB\ nom}$			13.2
$C_{V_{SB}\ load}$	Capacitive Loading		0		1000

## 6. EFFICIENCY

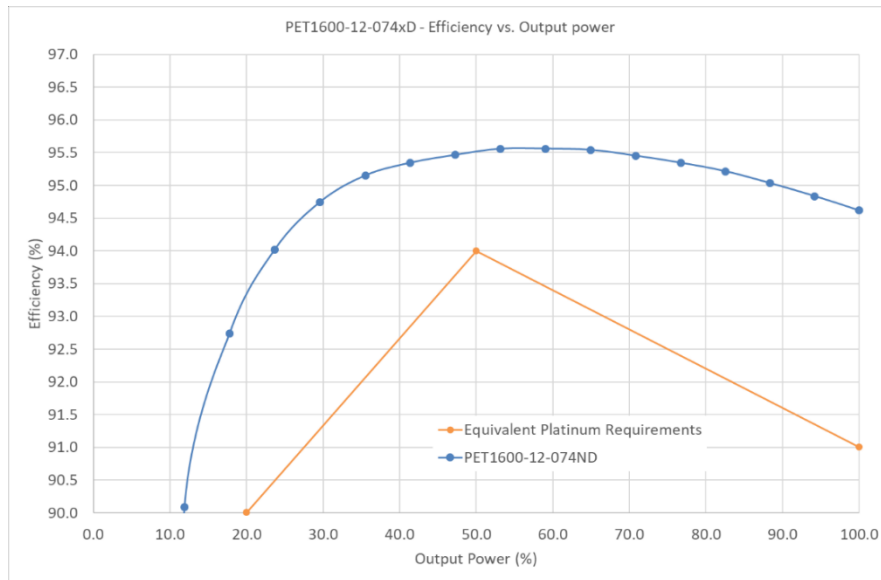


Figure 2. Efficiency vs. Output Power (fan losses not included)



Asia-Pacific  
+86 755 298 85888

Europe, Middle East  
+353 61 49 8941

North America  
+1 866 513 2839

## 7. OUTPUT GROUND / CHASSIS CONNECTION

The output return path serves as power and signal ground. All output voltages and signals are referenced to these pins. To prevent a shift in signal and voltage levels due to ground wiring voltage drop a low impedance ground plane should be used as shown in *Figure 3*. Alternatively, separated ground signals can be used as shown in *Figure 4*. In this case the two ground planes should be connected together at the power supplies ground pins.

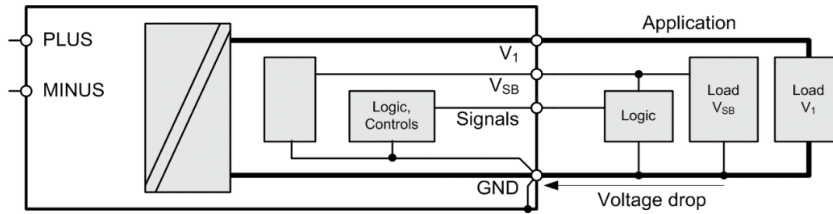


Figure 3. Common low impedance ground plane

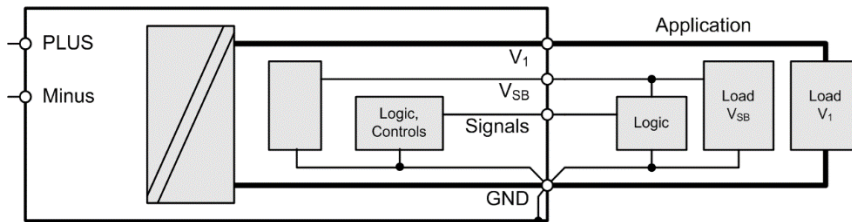


Figure 4. Separated power and signal ground

Due the unit has no Input Earth Connector Terminal on the front of the unit it is mandatory to have a reliable system output GND to Earth connection.

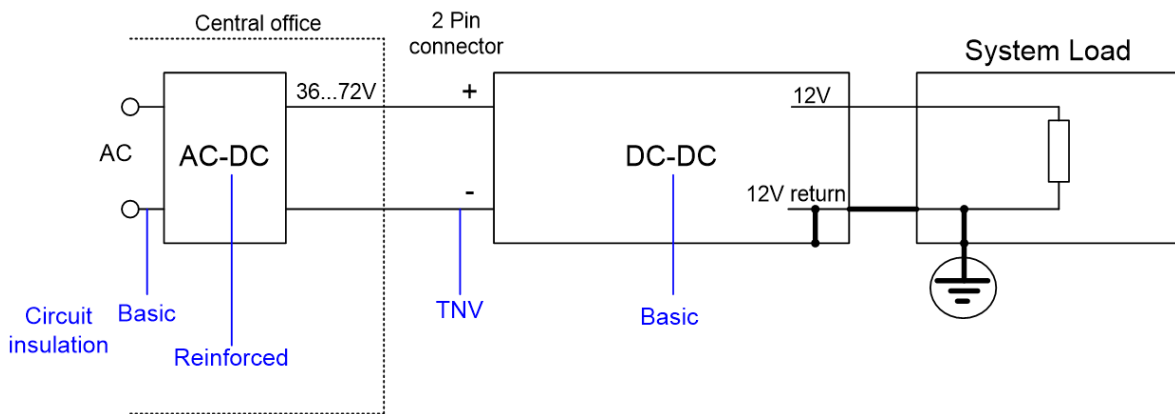


Figure 5. Block diagram with reliable System Earth connection

## 8. PROTECTION

General Condition:  $T_A = 0...45\text{ }^\circ\text{C}$  (PET1600-12-074RD),  $T_A = 0...55\text{ }^\circ\text{C}$  (PET1600-12-074ND), unless otherwise noted.

PARAMETER	DESCRIPTION / CONDITION	MIN	NOM	MAX	UNIT
$F$	Input Fuse (L)	Not use accessible, fast acting PET1600-12-074ND Not use accessible, fast acting PET1600-12-074RD	80 80		A A
$V_{1\text{ OV}}$	OV Threshold $V_1$	13.6	14.3	14.5	VDC
$t_{V1\text{ OV}}$	OV Trip Time $V_1$		1		ms
$V_{\text{VSB OV}}$	OV Threshold $V_{\text{SB}}$	13.6	14.3	14.5	VDC
$t_{\text{VSB OV}}$	OV Trip Time $V_{\text{SB}}$		1		ms
$I_{V1\text{ OC Slow}}$	OC Limit $V_1$	135		146	ADC
	Over Current Limitation, Latch-off time		20		s
$I_{V1\text{ OC Fast}}$	Fast OC Limit $V_1$	143			ADC
$I_{1\text{ SC}}$	Max Short Circuit Current $V_1$		210		A
$I_{\text{VSB OC}}$	OC Limit $V_{\text{SB}}$			6	A
$t_{\text{VSB OC}}$	OC Trip time $V_{\text{SB}}$		1		ms
$T_{\text{SD}}$	Over Temperature on Heat Sinks		110		$^\circ\text{C}$
$\text{OVP}$	Over voltage trip	$V_{1\text{ min}}$ to $V_{1\text{ max}}$	13.6	15.0	V

### 8.1 OVERVOLTAGE PROTECTION

The PET1600-12-074xD front-end provides a fixed threshold overvoltage (OV) protection implemented with a HW comparator for both the main and the standby output. Once an OV condition has been triggered on the main output, the supply will shut down and latch the fault condition. The latch can be unlocked by disconnecting the supply from the DC supply or by toggling the PSON\_L input. The standby output will continuously try to restart with a 1 s interval after OV condition has occurred.

### 8.2 UNDERVOLTAGE DETECTION

Both main and standby outputs are monitored. LED and PWOK\_H will change if the output voltage exceeds regulation band. The main output will latch off if the main output voltage  $V_1$  falls below 10 V (typically in an overload condition) for more than 55 ms. The latch can be unlocked by disconnecting the supply from the DC supply or by toggling the PSON\_L input. If the standby output leaves its regulation bandwidth for more than 2 ms then the main output is disabled to protect the system.

### 8.3 CURRENT LIMITATION

#### MAIN OUTPUT

The main output exhibits a substantially rectangular output characteristic controlled by a software feedback loop. If output current exceeds  $I_{V1\text{ OC Fast}}$  it will reduce output voltage in order to keep output current at  $I_{V1\text{ OC Fast}}$ . If the output voltage drops below ~10.0 VDC for more than 55 ms, the output will latch off (standby remains on). The latch can be unlocked by disconnecting the supply from the DC mains or by toggling the PSON\_L input. The main output current limitation thresholds depend on the actual input applied to the power supply.

#### STANDBY OUTPUT

The standby output exhibits a substantially rectangular output characteristic down to 0 V (no hiccup mode / latch off). The current limitation of the standby output is independent of the DC input voltage. Running in current limitation causes the output voltage to fall, this will trigger under voltage protection and disables the main output.



## 9. MONITORING

The power supply operating parameters can be accessed through I<sup>2</sup>C interface. For more details refer to chapter [I2C / POWER MANAGEMENT BUS COMMUNICATION](#) and document URP.00234 (PET1600-12-074 Power Management Bus Communication Manual).

PARAMETER		DESCRIPTION / CONDITION	MIN	NOM	MAX	UNIT
$V_{i\ mon}$	Input Voltage	$V_{i\ min} \leq V_i \leq V_{i\ max}$	-2		+2	VDC
$I_{i\ mon}$	Input Current	$I_i > 7\ A$	-5		+5	%
$P_{i\ mon}$	True Input Power	$P_i > 500\ W$ $200W < P_i \leq 500\ W$	-5		+5	%
$V_{i\ mon}$	$V_i$ Voltage		-0.2		+0.2	VDC
$I_{i\ mon}$	$V_i$ Current	$I_i > 50\ A$ $10\ A < I_i \leq 50\ A$	-3		+3	%
$P_{i\ nom}$	$V_i$ Output Power	$10\% I_{i\ nom} \leq I_i \leq 20\% I_{i\ nom}$ $I_i > 20\% I_{i\ nom}$	-15		+15	%
$V_{SB\ mon}$	$V_{SB}$ Voltage		-0.2		+0.2	VDC
$I_{SB\ mon}$	$V_{SB}$ Current		-0.2		+0.2	ADC
$T_{A\ mon}$	Inlet Temperature	$T_{A\ min} \leq T_A \leq T_{A\ max}$	-5	2	+5	°C

## 10. SIGNALING AND CONTROL

### 10.1 ELECTRICAL CHARACTERISTICS

PARAMETER		DESCRIPTION / CONDITION	MIN	NOM	MAX	UNIT
<b>PSON_H / HOTSTANDBYEN_H</b>						
$V_{iL}$	Input Low Level Voltage	PSON_L: Main output enabled HOTSTANDBYEN_H: Hot Standby mode not allowed	-0.2		0.8	V
$V_{iH}$	Input High Level Voltage	PSON_L: Main output disabled HOTSTANDBYEN_H: Hot Standby mode allowed	2		3.5	V
$I_{iL,H}$	Maximum Input Sink or Source Current	$V_i = -0.2\ V\ to\ +3.5\ V$	-1		1	mA
$R_{pull\ up}$	Internal Pull up Resistor to internal 3.3 V			10		kΩ
$R_{LOW}$	Maximum external Pull down Resistance to GND to obtain Low Level				1	kΩ
$R_{HIGH}$	Minimum external Pull down Resistance to GND to obtain High Level		50			kΩ
<b>PWOK_H</b>						
$V_{OL}$	Output Low Level Voltage	$V_i$ or $V_{SB}$ out of regulation, $V_{isink} < 4\ mA$	0		0.4	V
$V_{OH}$	Output High Level Voltage	$V_i$ and $V_{SB}$ in regulation, $I_{source} < 0.5\ mA$	2.4		3.5	V
$R_{pull\ up}$	Internal Pull up Resistor to internal 3.3 V			1		kΩ
$I_{OL}$	Maximum Sink Current	$V_O < 0.4\ V$			4	mA





### 10.2 SENSE INPUTS

The main output has sense lines implemented to compensate for voltage drop on load wires in both positive and negative path. The maximum allowed voltage drop is 200 mV on the positive rail and 100 mV on the GND rail. With open sense inputs the main output voltage will rise by 250 mV. Therefore, if not used, these inputs should be connected to the power output and GND at the power supply connector. The sense inputs are protected against short circuit. In this case the power supply will shut down.

### 10.3 CURRENT SHARE

The PET front-ends have an active current share scheme implemented for V1. All the ISHARE current share pins need to be interconnected in order to activate the sharing function. If a supply has an internal fault or is not turned on, it will disconnect its ISHARE pin from the share bus. This will prevent dragging the output down (or up) in such cases. The current share function uses an analog bus to transmit and receive current share information. The controller implements a Master/Slave current share function. The power supply providing the largest current among the group is automatically the Master. The other supplies will operate as Slaves and increase their output current to a value close to the Master by slightly increasing their output voltage. The voltage increase is limited to +250 mV. The standby output uses a passive current share method (droop output voltage characteristic).

### 10.4 PSON\_L INPUT

The PSON\_L is an internally pulled-up (3.3 V) input signal to enable/disable the main output V1 of the front-end. With low level input the main output is enabled. This active-low pin is also used to clear any latched fault condition. The PSON\_L can be either controlled by an open collector device or by a voltage source.

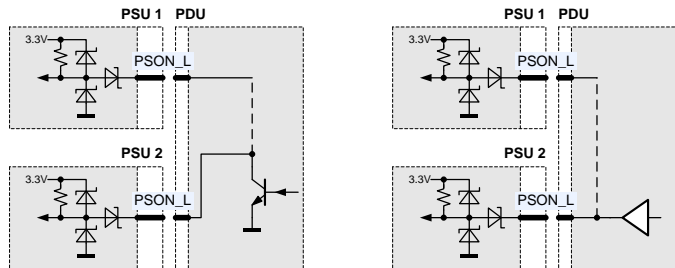


Figure 6. PSON\_L connection

### 10.5 PWOK\_H OUTPUT

The PWOK\_H is an open drain output with an internal pull-up to 3.3 V indicating whether both VSB and V1 outputs are within regulation. This pin is active-High.

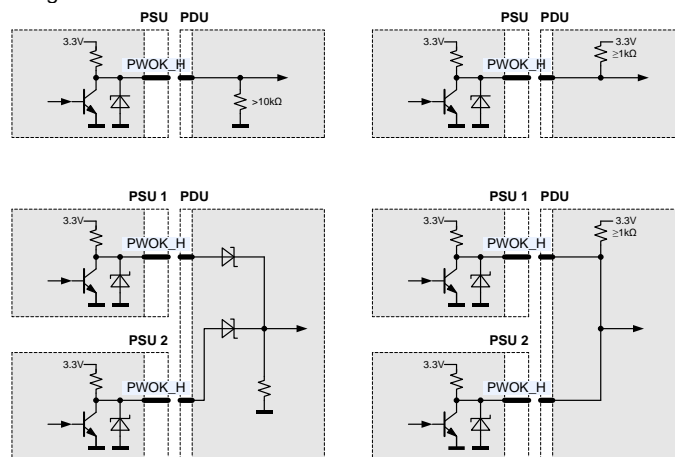


Figure 7. PWOK\_H connection



### 10.6 PRESENT\_L OUTPUT

The PRESENT\_L pin is wired through a 100 Ohms resistor to internal GND within the power supply. This pin does indicate that there is a power supply present in this system slot. An external pull-up resistor has to be added within the application. Current into PRESENT\_L should not exceed 5mA to guarantee a low level voltage if power supply is seated.

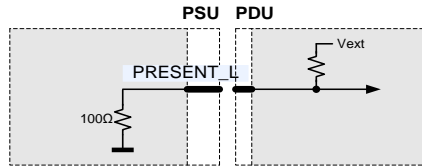


Figure 8. PRESENT\_L connection

### 10.7 SIGNAL TIMING

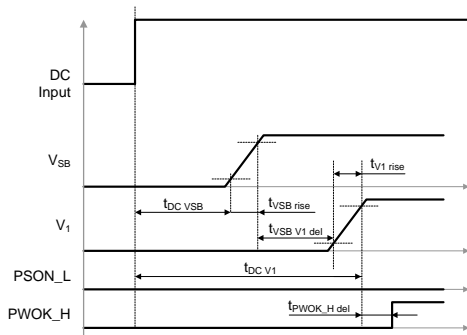


Figure 9. DC turn-on timing

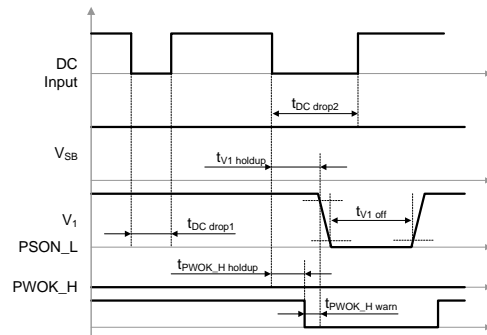


Figure 10. DC short dips

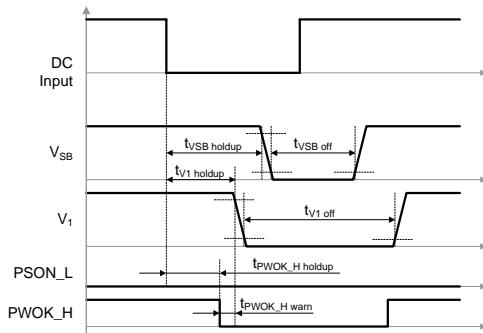


Figure 11. DC long dips

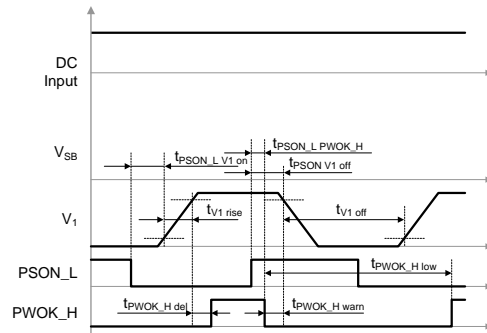


Figure 12. PSON\_L turn-on/off timing

PARAMETER	DESCRIPTION / CONDITION	MIN	NOM	MAX	UNIT
$t_{DC V_{SB}}$	DC Line to 90% $V_{SB}$			3	s
$t_{DC V_1}$	DC Line to 90% $V_1$			5 <sup>3</sup>	s
$t_{V_{SB} V_1 del}$	$V_{SB}$ to $V_1$ delay	50		1000	ms
$t_{V_1 rise}$	$V_1$ rise time				See chapter <a href="#">OUTPUT</a>
$t_{V_{SB} rise}$	$V_{SB}$ rise time				See chapter <a href="#">OUTPUT</a>
$t_{DC drop1}$	DC drop from $V_i = -48$ VDC, without $V_1$ leaving regulation	$I_{1 nom}, I_{SB nom}$	5	5.5	ms
$t_{DC drop2}$	DC drop without $V_{SB}$ leaving regulation	$I_{1 nom}, I_{SB nom}$	6		ms
$t_{V_1 holdup}$	Loss of DC to $V_1$ leaving regulation				See chapter <a href="#">INPUT</a>
$t_{V_{SB} holdup}$	Loss of DC to $V_{SB}$ leaving regulation				See chapter <a href="#">INPUT</a>
$t_{PWOK_H del}$	Outputs in regulation to PWOK_H asserted	5		400	ms
$t_{PWOK_H warn}$	Warning time from de-assertion of PWOK_H to $V_1$ leaving regulation with $V_i = -48$ VDC	0.15			ms
$t_{PWOK_H holdup}$	Loss of DC to PWOK_H de-asserted	2			ms
$t_{PWOK_H low}$	Time PWOK_H is kept low after being de-asserted	100			ms
$t_{PSON\_L V_1 on}$	Delay PSON_L active to $V_1$ in regulation	5		400	ms
$t_{PSON\_L V_1 off}$	Delay PSON_L de-asserted to $V_1$ disabled		50		ms
$t_{V_1 off}$	Time $V_1$ is kept off after leaving regulation		1		s
$t_{V_{SB} off}$	Time $V_{SB}$ is kept off after leaving regulation		1		s

### 10.8 LED INDICATOR

The front-end has one front LED showing the status of the supply. The LED is bi-colored: green and amber and indicates DC input and DC output power presence and warning or fault conditions. [Table 1](#) below lists the different LED status.

OPERATING CONDITION <sup>4</sup>	LED SIGNALING
No $V_i$ or DC Line in UV condition, $V_{SB}$ not present from paralleled power supplies	Off
PSON_L High	Blinking Green 1 Hz
No $V_i$ or DC Line in UV condition, $V_{SB}$ present from paralleled power supplies	
$V_1$ or $V_{SB}$ out of regulation	
Over temperature shutdown	
Output over voltage shutdown ( $V_1$ or $V_{SB}$ )	Solid Amber
Output over current shutdown ( $V_1$ or $V_{SB}$ )	
Fan error (>55%)	
Over temperature warning	
Minor fan regulation error (>45%, <45%)	Blinking Amber 1 Hz
Firmware boot loading in process	Blinking Green 2 Hz
Outputs $V_1$ and $V_{SB}$ in regulation	Solid Green

Table 1. LED Status

<sup>3</sup> At repeated ON-OFF cycles the start-up times can be increased by 1 s

<sup>4</sup> The order of the criteria in the table corresponds to the testing precedence in the controller



### 11. I2C / POWER MANAGEMENT BUS COMMUNICATION

The PET front-end is a communication Slave device only; it never initiates messages on the I<sup>2</sup>C/SMBus by itself. The communication bus voltage and timing is defined in [Table 2](#) and further characterized through:

- The SDA/SCL IOs use 3.3 V logic levels
- External pull-up resistors on SDA/SCL required for correct signal edges
- Full SMBus clock speed of 100 kbps
- Clock stretching limited to 1 ms
- SCL low time-out of >25 ms with recovery within 10 ms
- Recognizes any time Start/Stop bus conditions

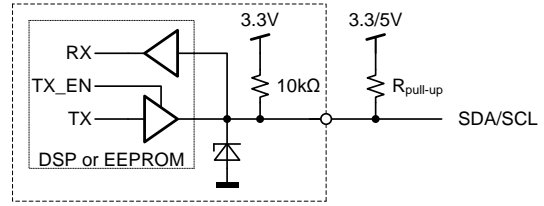


Figure 13. Physical Layer of Communication Interface

Communication to the DSP or the EEPROM will be possible as long as the input DC voltage is provided. If no DC is present, communication to the unit is possible as long as it is connected to a life VSB output (provided e.g. by the redundant unit). If only V1 is provided, communication is not possible.

PARAMETER	DESCRIPTION	CONDITION	MIN	MAX	UNIT
<b>SCL / SDA</b>					
$V_L$	Input low voltage		-0.5	1.0	V
$V_{IH}$	Input high voltage		2.3	3.5	V
$V_{Hys}$	Input hysteresis		0.15		V
$V_{OL}$	Output low voltage	3 mA sink current	0	0.4	V
$t_r$	Rise time for SDA and SCL		$20+0.1C_b^1$	1000	ns
$t_{of}$	Output fall time $V_{IHmin} \rightarrow V_{ILmax}$	$10\text{ pF} < C_b^1 < 400\text{ pF}$	$20+0.1C_b^1$	300	ns
$I_i$	Input current SCL/SDA	$0.1\text{ VDD} < V_i < 0.9\text{ VDD}$	-10	10	$\mu\text{A}$
$C_i$	Internal Capacitance for each SCL/SDA			50	pF
$f_{SCL}$	SCL clock frequency		0	100	kHz
$R_{pull-up}$	External pull-up resistor	$f_{SCL} \leq 100\text{ kHz}$		$1000\text{ ns} / C_b^1$	$\Omega$
$t_{HDSTA}$	Hold time (repeated) START	$f_{SCL} \leq 100\text{ kHz}$	4.0		$\mu\text{s}$
$t_{LOW}$	Low period of the SCL clock	$f_{SCL} \leq 100\text{ kHz}$	4.7		$\mu\text{s}$
$t_{HIGH}$	High period of the SCL clock	$f_{SCL} \leq 100\text{ kHz}$	4.0		$\mu\text{s}$
$t_{SUSTA}$	Setup time for a repeated START	$f_{SCL} \leq 100\text{ kHz}$	4.7		$\mu\text{s}$
$t_{HDDAT}$	Data hold time	$f_{SCL} \leq 100\text{ kHz}$	0	3.45	$\mu\text{s}$
$t_{SUDAT}$	Data setup time	$f_{SCL} \leq 100\text{ kHz}$	250		ns
$t_{SUSTO}$	Setup time for STOP condition	$f_{SCL} \leq 100\text{ kHz}$	4.0		$\mu\text{s}$
$t_{BUF}$	Bus free time between STOP and START	$f_{SCL} \leq 100\text{ kHz}$	5		ms

<sup>1</sup>  $C_b$  = Capacitance of bus line in pF, typically in the range of 10...400 pF

Table 2. I<sup>2</sup>C / SMBus Specification

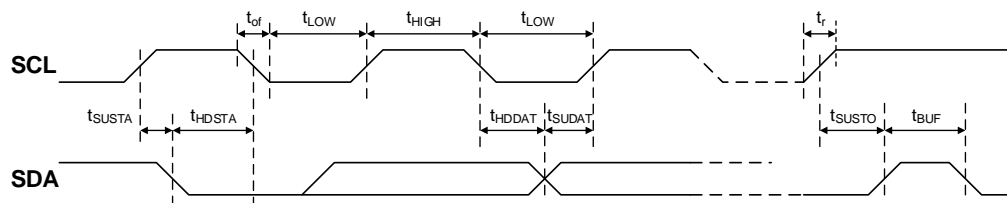


Figure 14. I<sup>2</sup>C / SMBus Timing

**ADDRESS SELECTION**

The address for I<sup>2</sup>C communication can be configured by pulling address input pins A1 and A0 either to GND (Logic Low) or leave them open (Logic High). An internal pull up resistor will cause the A0 / A1 and A2 pin to be in High Level if left open. A fixed addressing offset exists between the Controller and the EEPROM.

A2 <sup>2)</sup>	A1	A0	I2C Address <sup>1)</sup>	
			Controller	EEPROM
0	0	0	0xB0	0xA0
0	0	1	0xB2	0xA2
0	1	0	0xB4	0xA4
0	1	1	0xB6	0xA6
1	0	0	0xB8	0xA8
1	0	1	0xBA	0xAA
1	1	0	0xBC	0xAC
1	1	1	0xBE	0xAE

<sup>1)</sup> The LSB of the address byte is the R/W bit.

<sup>2)</sup> A2 is used on the standard model only.

On special models (e.g. PET1600-12-074ND020) the connector PIN is used for IN\_OK functionality. These models have only two addressing pins A0 and A1. A2 is set to 0 inside firmware by default.

Table 3. Address and Protocol Encoding

**11.1 SMBALERT\_L OUTPUT**

The SMBALERT\_L signal indicates that the power supply is experiencing a problem that the system agent should investigate. This is a logical OR of the Shutdown and Warning events. It is asserted (pulled Low) at Shutdown or Warning events such as reaching temperature warning/shutdown threshold of critical component, general failure, over-current, over-voltage, under-voltage or low-speed of failed fan. This signal may also indicate the power supply is operating in an environment exceeding the specified limits.

The SMBAlert signal is asserted simultaneously with the LED turning to solid amber or blinking amber.

PARAMETER	DESCRIPTION / CONDITION	MIN	NOM	MAX	UNIT
<b>SMB_ALERT_L</b>					
$V_{ext}$	Maximum External Pull up Voltage			12	V
$I_{OH}$	Maximum High Level Leakage Current	No Failure or Warning condition, $V_O = 12\text{ V}$		10	$\mu\text{A}$
$V_{OL}$	Output Low Level Voltage	Failure or Warning condition, $I_{sink} < 4\text{ mA}$		0	V
$R_{pull\ up}$	Internal Pull up Resistor to internal 3.3 V			None	
$I_{OL}$	Maximum Sink Current	$V_O < 0.4\text{ V}$		4	mA

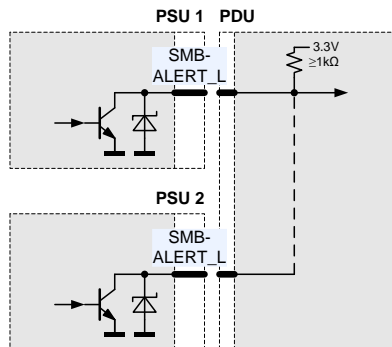


Figure 15. SMBALERT\_L connection



### 11.2 CONTROLLER AND EEPROM ACCESS

The controller and the EEPROM in the power supply share the same I<sup>2</sup>C bus physical layer (see *Figure 16*) and can be accessed under different addresses, see ADDRESS SELECTION. The SDA/SCL lines are connected directly to the controller and EEPROM which are supplied by internal 3.3 V.

The EEPROM provides 256 bytes of user memory. None of the bytes are used for the operation of the power supply.

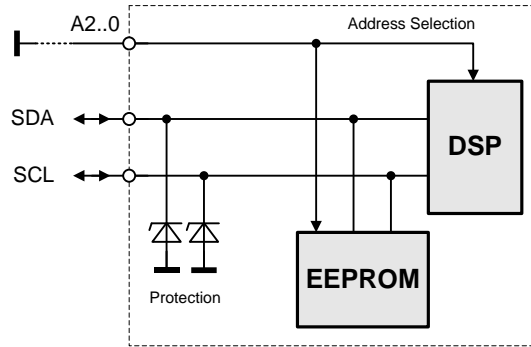


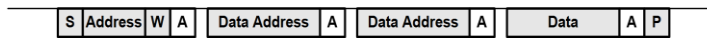
Figure 16. I<sup>2</sup>C Bus to DSP and EEPROM

### 11.3 EEPROM PROTOCOL

The EEPROM follows the industry communication protocols used for this type of device. Even though page write / read commands are defined, it is recommended to use the single byte write / read commands.

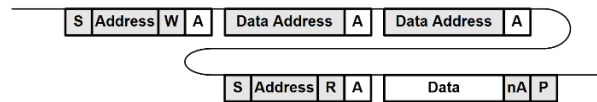
#### WRITE

The write command follows the “SMBus 1.1 Write Byte Protocol”. After the device address with the write bit cleared, the Two Byte Data Address is sent followed by the data byte and the STOP condition. A new START condition on the bus should only occur after 5ms of the last STOP condition to allow the EEPROM to write the data into its memory.



#### READ

The read command follows the “SMBus 1.1 Read Byte Protocol”. After the device address with the write bit cleared the two byte data address is sent followed by a repeated start, the device address and the read bit set. The EEPROM will respond with the data byte at the specified location.



### 11.4 POWER MANAGEMENT BUS PROTOCOL

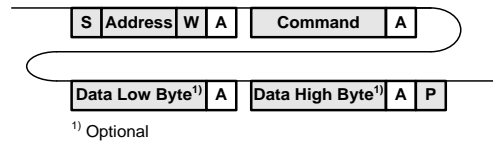
The Power Management Bus is an open standard protocol that defines means of communicating with power conversion and other devices. For more information, please see the System Management Interface Forum web site at: [www.powerSIG.org](http://www.powerSIG.org).

Power Management Bus command codes are not register addresses. They describe a specific command to be executed. The PET1600-12-074ND supply supports the following basic command structures:

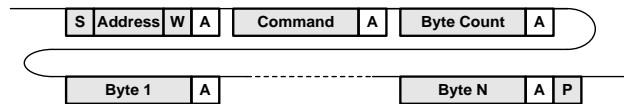
- Clock stretching limited to 1 ms
- SCL low time-out of >25 ms with recovery within 10 ms
- Recognized any time Start/Stop bus conditions

#### WRITE

The write protocol is the SMBus 1.1 Write Byte/Word protocol. Note that the write protocol may end after the command byte or after the first data byte (Byte command) or then after sending 2 data bytes (Word command).

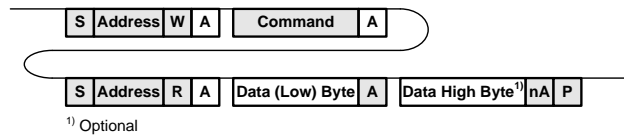


In addition, Block write commands are supported with a total maximum length of 255 bytes. See PET1600-12-074NA / PET1600-12-074ND Power Management Bus Communication Manual URP.00234 for further information.

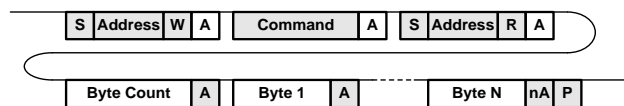


#### READ

The read protocol is the SMBus 1.1 Read Byte/Word protocol. Note that the read protocol may request a single byte or word.



In addition, Block read commands are supported with a total maximum length of 255 bytes. See PET1600-12-074NA/ PET1600-12-074ND Power Management Bus Communication Manual URP.00234 for further information.



## 11.5 GRAPHICAL USER INTERFACE

The Bel Power Solutions provides with its “I<sup>2</sup>C Utility” a Windows® XP/Vista/Win7 compatible graphical user interface allowing the programming and monitoring of the PET1600-12-074xD Front-End. The utility can be downloaded on: [belfuse.com/power-solutions](http://belfuse.com/power-solutions) and supports both the PSMI and Power Management Bus protocols.

The GUI allows automatic discovery of the units connected to the communication bus and will show them in the navigation tree. In the monitoring view the power supply can be controlled and monitored.

If the GUI is used in conjunction with the YTM.00045 Evaluation Board it is also possible to control the PSON\_L pin(s) of the power supply.

The monitoring screen also allows to enable the hot-standby mode on the power supply. The mode status is monitored and by changing the load current it can be monitored when the power supply is being disabled for further energy savings. This obviously requires 2 power supplies being operated as a redundant system (as in the evaluation kit).

**NOTE:** The user of the GUI needs to ensure that only one of the power supplies have the hot-standby mode enabled.

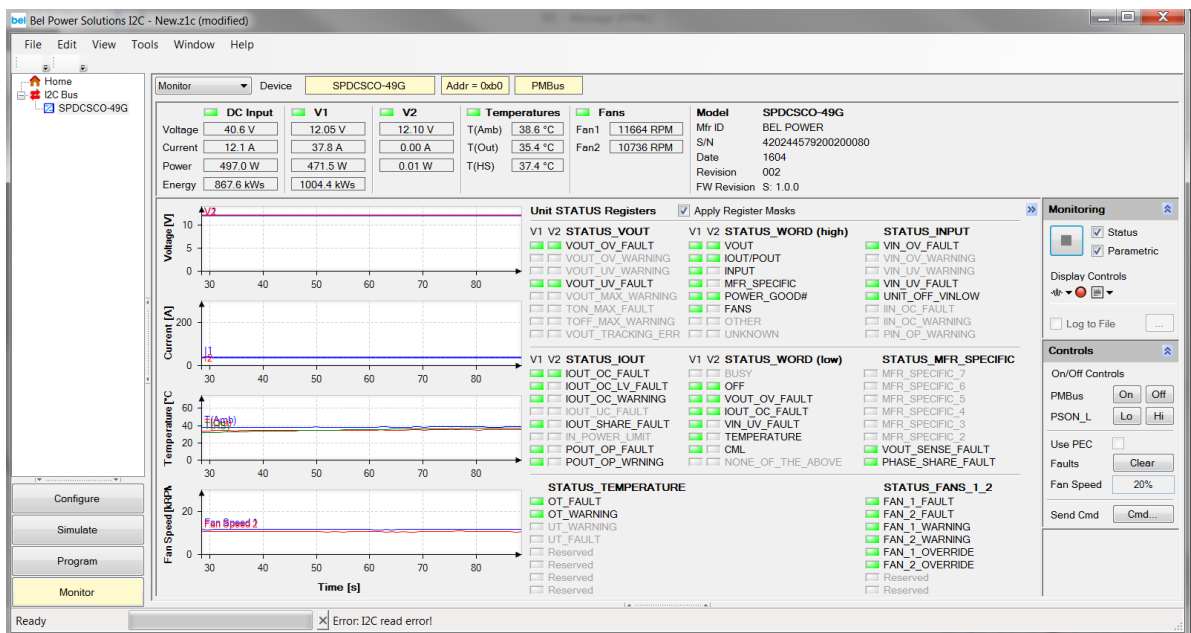


Figure 17. Monitoring dialog of the PC Utility

## 12. TEMPERATURE AND FAN CONTROL

To achieve best cooling results sufficient airflow through the supply must be ensured. Do not block or obstruct the airflow at the rear of the supply by placing large objects directly at the output connector. The PET1600-12-074ND is provided with a rear to front airflow, which means the air enters through the DC-output of the supply and leaves at the DC-inlet. The PET1600-12-074RD is provided with a front to rear airflow, which means the air enters through the DC-input of the supply and leaves at the DC-output. The PET1600-12-074xD power supply has been designed for horizontal operation.





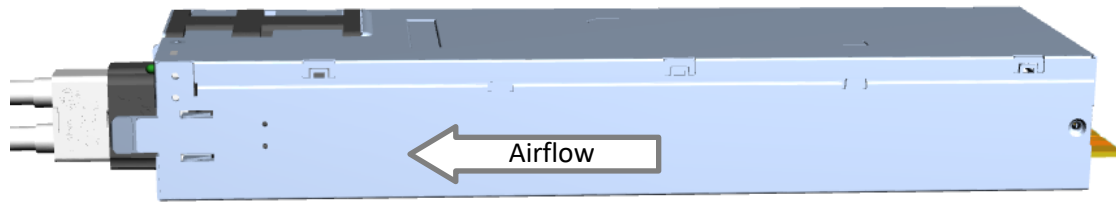


Figure 18. Airflow direction PET1600-12-074ND

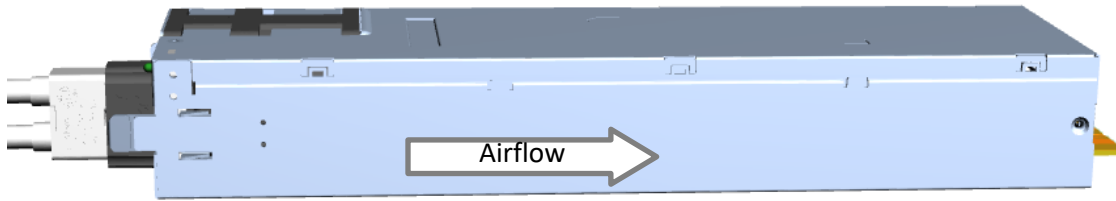


Figure 19. Airflow direction PET1600-12-074RD

The fan inside of the supply is controlled by a microprocessor. The rpm of the fan is adjusted to ensure optimal supply cooling and is a function of output power and the inlet temperature. Figure 20 illustrates the programmed fan curves.

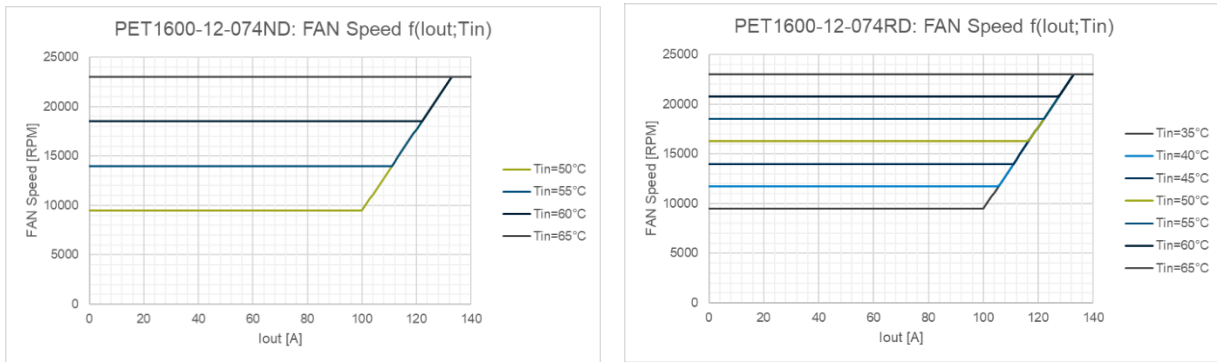


Figure 20. Fan speed vs. main output load

The PET1600-12-074ND provides access via I<sup>2</sup>C to the measured temperatures of sensors within the power supply, see Table 4. The microprocessor is monitoring these temperatures and if warning threshold of one of these sensors is reached it will set fan to maximum speed. If temperatures continue to rise above shut down threshold the main output  $V_I$  (or  $V_{SB}$  if auxiliary converter is affected) will be disabled. At the same time, the warning or fault condition is signaled accordingly through LED, PWOK\_H and SMBALERT\_L.

TEMPERATURE SENSOR	DESCRIPTION / CONDITION	POWER MANAGEMENT BUS REGISTER	WARNING THRESHOLD	SHUT DOWN THRESHOLD
Inlet Air Temperature	PET1600-12-074ND Sensor located on control board close to DC end of power supply (card edge connector)	0x8D	77°C	80°C
	PET1600-12-074RD Sensor located next to the fan of power supply		67°C	67°C
Synchronous Rectifier	Sensor located on secondary side of DC/DC stage	0x8F	95°C	110°C

Table 4. Temperature sensor location and thresholds



### 13. MAXIMUM OUTPUT POWER VERSUS INLET TEMPERATURE FOR SAFETY COMPLIANCY

For safety compliant operation the power supply needs to be operating inside the specified operating conditions. The PET1600-12-074xD modules have different power derating behavior which are mainly dependent on the air flow direction and the ambient conditions.

#### PET1600-12-074ND

Between 0°C and 55°C power supply is only depending on DC input altitude. Above 55°C the maximum output power is further reduced with rising temperature

Figure 21 illustrates these maximum current and power levels.

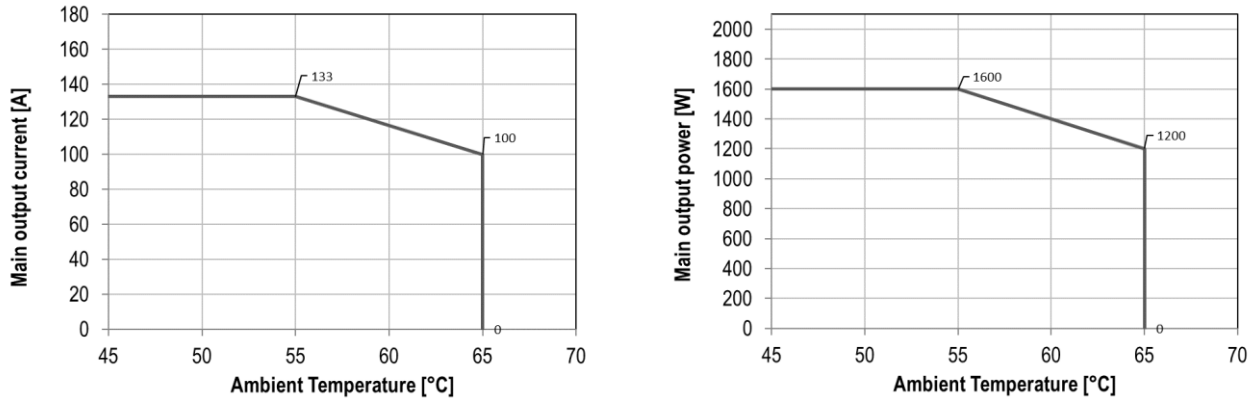


Figure 21. Maximum current and power levels PET1600-12-074ND

#### PET1600-12-074RD

Between 0°C and 45°C power supply is only depending on DC input altitude. Above 40°C the maximum output power is further reduced with rising temperature.

Figure 22 illustrates these maximum current and power levels.

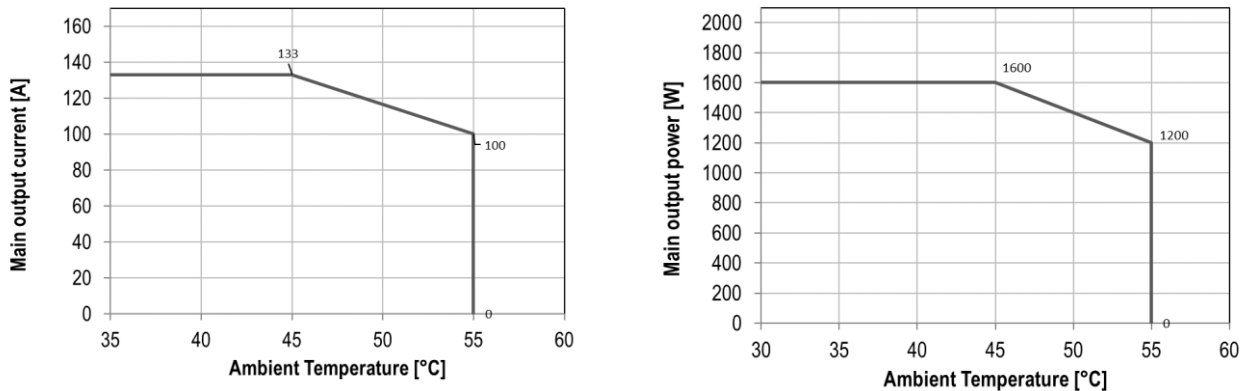


Figure 22. Maximum current and power levels PET1600-12-074RD



## 14. ELECTROMAGNETIC COMPATIBILITY

### 14.1 IMMUNITY

PARAMETER	DESCRIPTION / CONDITION	CRITERION
ESD Contact Discharge	IEC / EN 61000-4-2, ±8 kV, 25+25 discharges per test point (metallic case, LED, connector body)	A
ESD Air Discharge	IEC / EN 61000-4-2, ±15 kV, 25+25 discharges per test point (non-metallic user accessible surfaces)	A
Radiated Electromagnetics Filed	IEC / EN 61000-4-3, 10 V/m, 1 kHz/80% Amplitude Modulation, 1µs Pulse Modulation, 10 kHz ... 2 GHz	A
Burst	IEC / EN 61000-4-4, Level 3 DC input port ±2 kV, 1 minute	A
Surge	IEC / EN 61000-4-5 ; Common mode : ±2 kV (12 Ohm) Differential mode : ±1 kV (2 Ohm)	A
RF Conducted Immunity	IEC / EN 61000-4-6, Level 3, 10 Vrms, CW, 0.1 ... 80 MHz	A

### 14.2 EMISSION

PARAMETER	DESCRIPTION / CONDITION	CRITERION
Conducted Emission	EN 55032 / CISPR 32: 0.15 ... 30 MHz, QP and AVG, single power supply	Class A - 6 dB
Radiated Emission	EN 55032 / CISPR 32: 30 MHz ... 1 GHz, QP, single power supply	Class A - 6 dB
Acoustical Noise	Distance at bystander position, 25°C, 50% Load	65 dBA

## 15. SAFETY / APPROVALS

Maximum electric strength testing is performed in the factory according to IEC/EN 62368-1, and UL/CSA 62368-1. Input-to-output electric strength tests should not be repeated in the field. Bel Power Solutions will not honor any warranty claims resulting from electric strength field tests.

PARAMETER	DESCRIPTION / CONDITION	NOTE
Agency Approvals	UL 62368-1 CAN/CSA-C22.2 No. 62368-1 IEC/EN 62368-1 NEMKO EAC CQC	Approved
Isolation Strength	Input plus to chassis; 1500V for 1 minute	Basic
	Input minus to chassis; 1500V for 1 minute	Basic
	Output to chassis	None (Direct connection)



## 16. ENVIRONMENTAL

PARAMETER	DESCRIPTION / CONDITION	MIN	NOM	MAX	UNIT
$T_A$ Ambient Temperature	Up to 1'000m ASL, PET1600-12-074ND	-5		+55	°C
	Up to 1'000m ASL, PET1600-12-074RD	-5		+40	°C
	Linear derating from 1'000 to 3'048 m ASL				
	PET1600-12-074ND			+45	°C
$T_{Aext}$ Extended Temp. Range	PET1600-12-074RD			+30	°C
	PET1600-12-074ND			70	°C
$T_S$ Storage Temperature	PET1600-12-074RD			55	°C
	Non-operational	-20		+70	°C
Altitude	Operational, above Sea Level	-		3'048	m
	Non-operational, above Sea Level	-		10'600	m
Shock, operational	Half sine, 11ms, 10 shocks per direction, 6 directions			1	g peak
Shock, non-operational				30	g peak
Vibration, sinusoidal, operational	IEC/EN 60068-2-6, sweep 5 to 500 to 5 Hz, 1 octave/min, 5 sweep per axis			1	g peak
Vibration, sinusoidal, non-operational				4	g peak
Vibration, random, operational	7.7grms 30min, 3 axes operational			7.7	Grms
Vibration, random, non-operational	IEC/EN 60068-2-64, 5 to 500 Hz, 1 hour per axis			0.025	g <sup>2</sup> /Hz

## 17. RELIABILITY

PARAMETER	DESCRIPTION / CONDITION	MIN	NOM	MAX	UNIT
$MTBF$ Mean time to failure	According Bellcore TR-TSY-000332, Issue 3 $T_A = 25^\circ\text{C}$ , $V_i = -48\text{ VDC}$ , $0.5 \cdot I_{1\text{ nom}}$ , $I_{SB\text{ nom}}$	683			kh
Expected life time	$T_A = 25^\circ\text{C}$ , $V_i = -48\text{ VDC}$ , $0.7 \cdot I_{1\text{ nom}}$ , $I_{SB\text{ nom}}$	7			years
	$T_A = 55^\circ\text{C}$ , $V_i = -48\text{ VDC}$ , $I_{1\text{ nom}}$ , $I_{SB\text{ nom}}$	2			

## 18. MECHANICAL

PARAMETER	DESCRIPTION / CONDITION	MIN	NOM	MAX	UNIT
Dimensions *	Width		73.5		mm
	Height		40.0		mm
	Depth		265.0		mm
$m$ Weight			1.2		kg

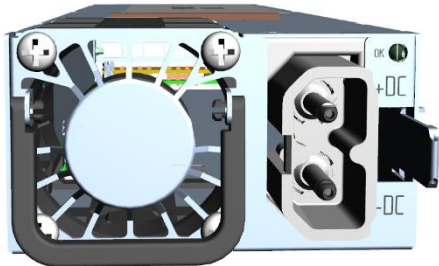


Figure 23. Front view

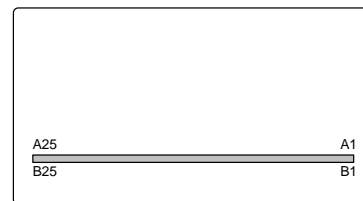


Figure 24. Rear view

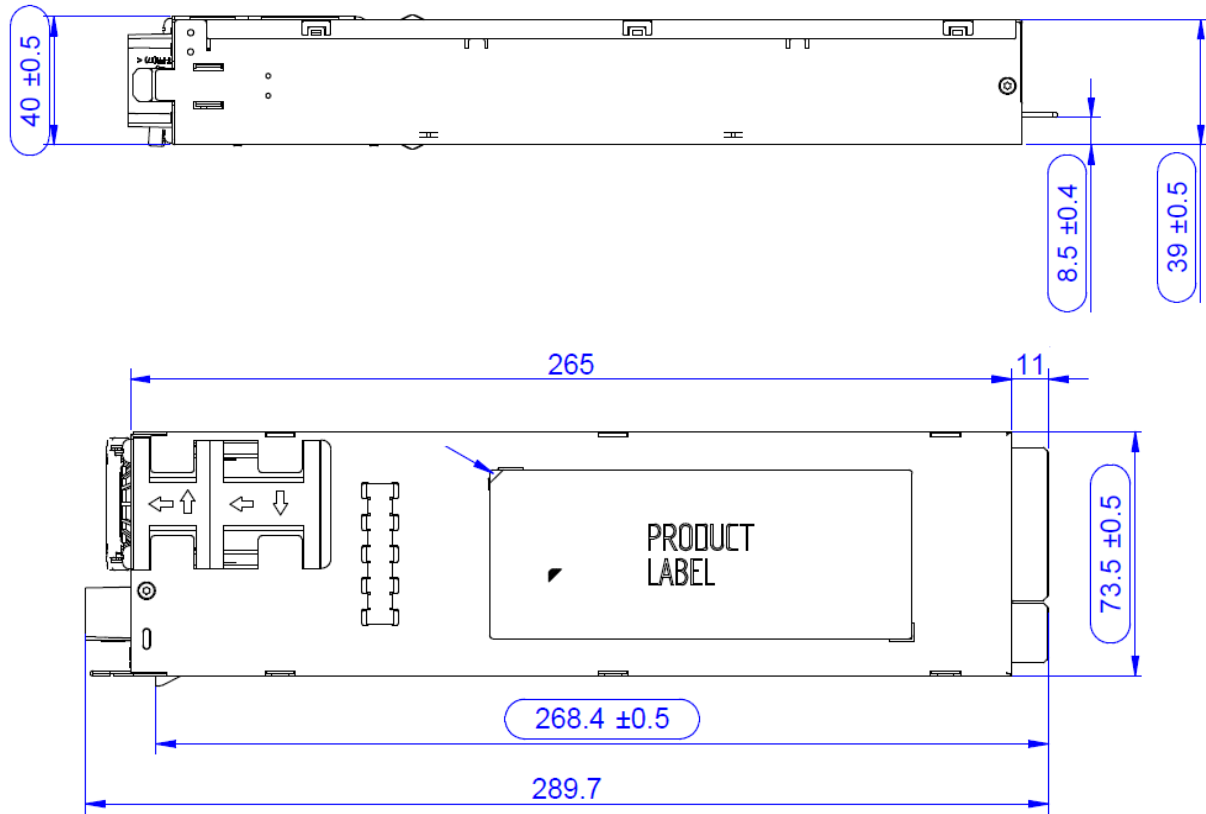


Figure 25. Top and side view with the connector added

A screw added on the PET1600-12-074xD side prevents the unit from being inserted into system with standard INTEL connector. Systems using PET1600-12-074xD must have a slot of  $\varnothing 6$  mm x 14 mm implemented to allow the unit to be inserted. The maximum size of the screw head is  $\varnothing 6$ mm and height 2.12 mm.

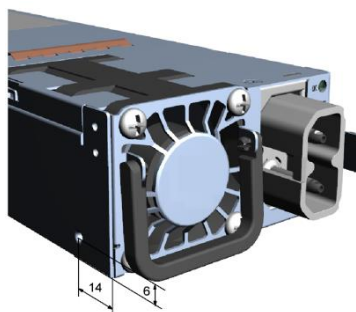


Figure 26. Polarizing screw

## 19. CONNECTORS

PARAMETER	DESCRIPTION / CONDITION	MIN	NOM	MAX	UNIT
DC inlet	Receptacle: Amphenol # C10-730138-000, 3.6 mm or equivalent Plug: Amphenol # C10-747100-000, for 6 AWG (black) Amphenol # C10-638974-000, for 6 AWG (gray) Amphenol # C10-747442-000, for 4 AWG (black) Input wire harness (with black plug): Amphenol # CR-302001-257 or equivalent				
DC diameter requirement	Wire size	6		4	AWG
Mating output connector	Manufacturer P/N: 10035388-106LF (see <a href="#">Figure 27</a> ) BEL P/N: ZES.00489				

## 20. OUTPUT CONNECTOR PIN ASSIGNMENT

PIN	SIGNAL NAME	DESCRIPTION
A1 ~ A9	GND	Power and signal ground (return)
B1 ~ B9	GND	
A10 ~ A18	V1	+12VDC main output
B10 ~ B18	V1	
A19	SDA	I <sup>2</sup> C data signal line
A20	SCL	I <sup>2</sup> C clock signal line
A21	PSON_L	Power supply on input, active-low
A22	SMB_ALERT_L	SMB Alert signal output, active-low
A23	V1_SENSE_R	Main output negative sense
A24	V1_SENSE	Main output positive sense
A25	PWOK_H	Power OK signal output, active-high
B19	A0	I <sup>2</sup> C address selection input
B20	A1	
B21	VSB	+12V Standby positive output
B22	NC	Not used
B23	ISHARE	Analog current share bus
B24	PRESENT_L	Power supply seated, active-low
B25	A2	I <sup>2</sup> C address selection input (Future implementation)

Table 5. Output connector pin assignment



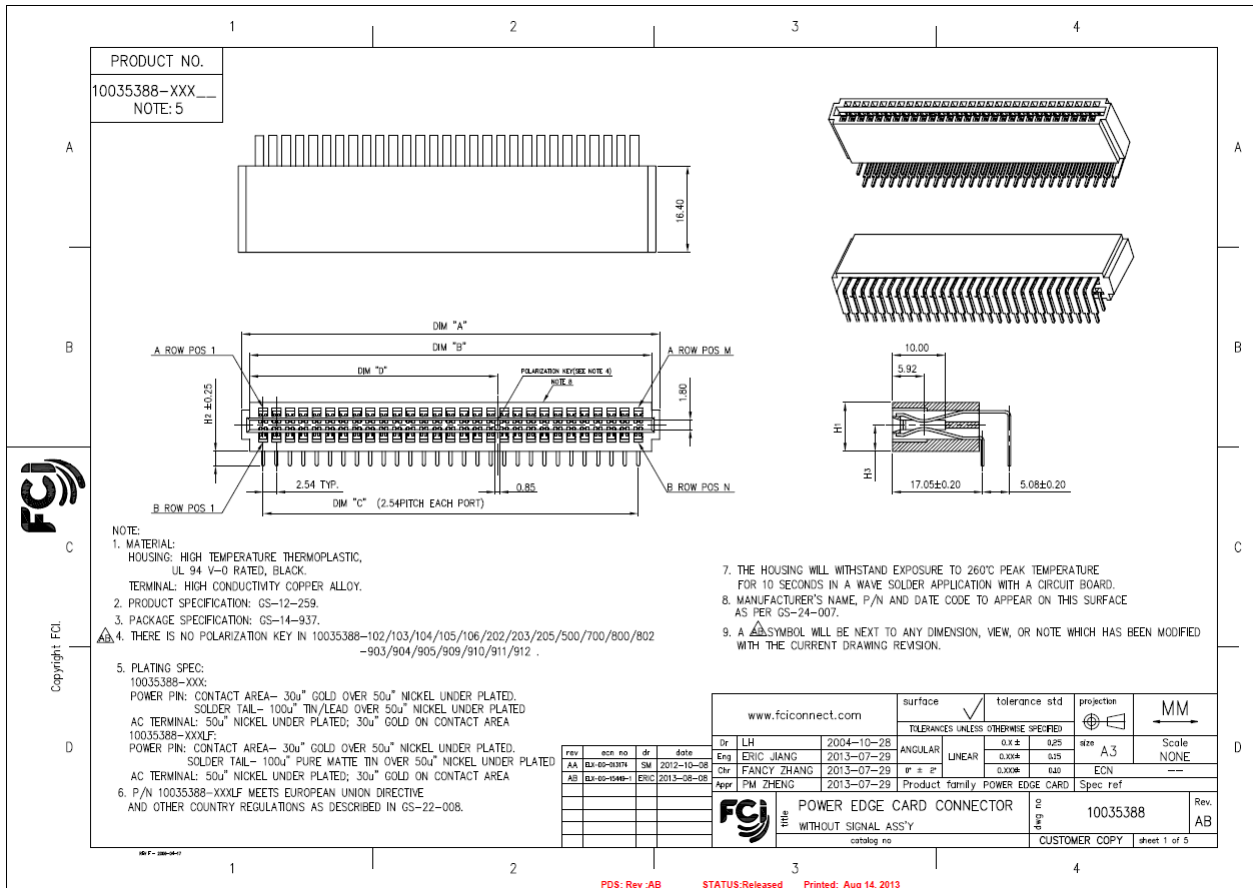


Figure 27. Mating connector drawing page 1



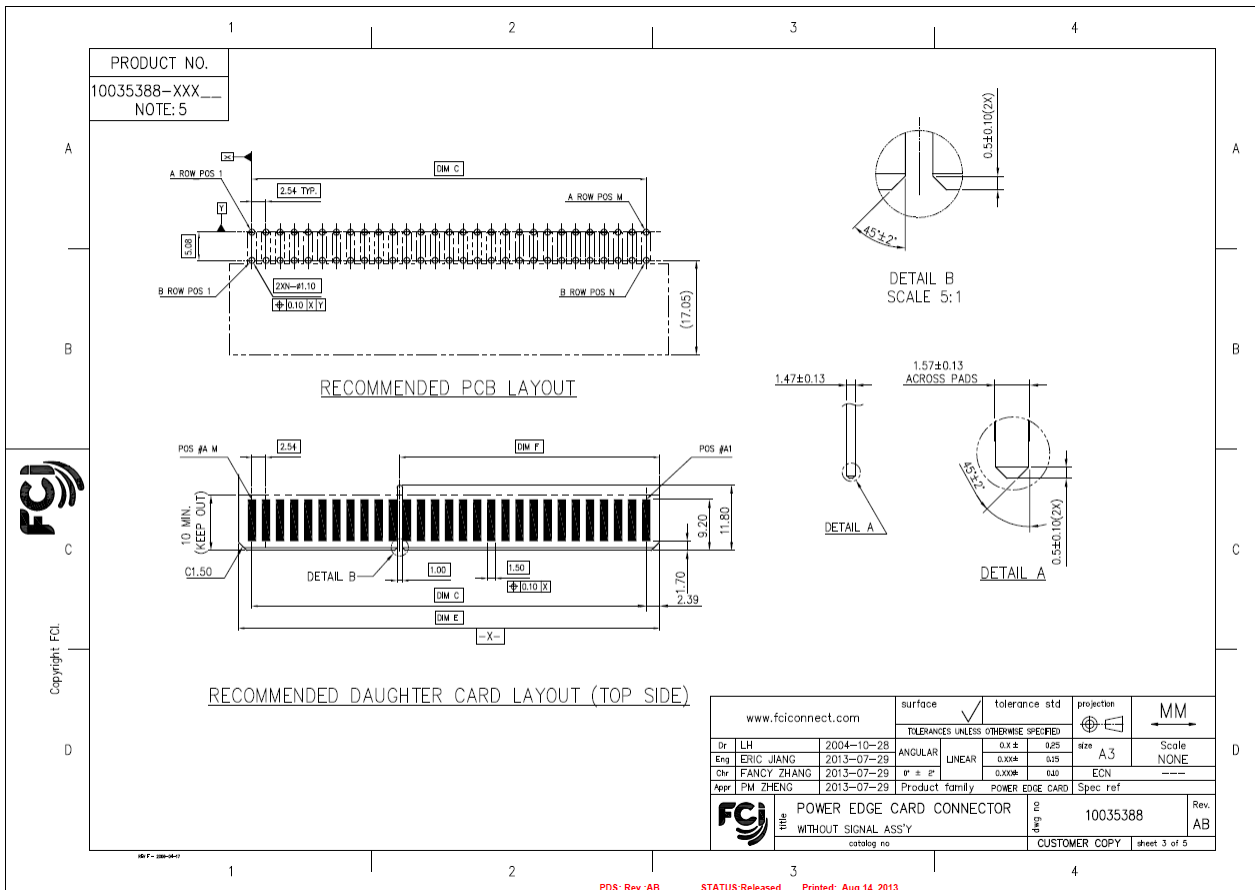


Figure 28. Mating connector drawing page 2





		1		2				3			4				
		PART NO.	DIM*A*	DIM*B*	DIM*C*	DIM*D*	DIM*E*	DIM*F*	H1	H2	H3	PIN CONFIGURATION		M	N
A	10035388-000 10035388-000LF	79.20	76.20	71.12	46.99	75.90	46.84	8.50	3.50	4.25	ALL LOADED		29	29	
		79.20	76.20	71.12	46.99	75.90	46.84	8.50	3.50	4.25	A1: [Pin Diagram] A29 B1: [Pin Diagram] B29	29	29		
	10035388-100 10035388-100LF	69.04	66.04	60.96	36.83	65.74	36.68	8.50	3.50	4.25	ALL LOADED		25	25	
		69.04	66.04	60.96	36.83	65.74	36.68	8.50	3.50	4.25	A1: [Pin Diagram] A25 B1: [Pin Diagram] B25	25	25		
	10035388-102 10035388-102LF	69.04	66.04	60.96	N/A	65.74	N/A	8.50	3.50	4.25	ALL LOADED		25	25	
		69.04	66.04	60.96	N/A	65.74	N/A	8.50	3.50	4.25	A1: [Pin Diagram] A25 B1: [Pin Diagram] B25	25	25		
B	10035388-104 10035388-104LF	69.04	66.04	60.96	N/A	65.74	N/A	8.50	3.50	4.25	ALL LOADED		25	25	
		69.04	66.04	60.96	N/A	65.74	N/A	8.50	3.50	4.25	A1: [Pin Diagram] A25 B1: [Pin Diagram] B25	25	25		
	10035388-105 10035388-105LF	69.04	66.04	60.96	N/A	65.74	N/A	8.50	3.50	4.25	ALL LOADED		25	25	
		69.04	66.04	60.96	N/A	65.74	N/A	9.287	2.713	5.037	ALL LOADED		25	25	
	10035388-200 10035388-200LF	84.28	81.28	76.20	52.07	80.98	51.92	8.50	3.50	4.25	ALL LOADED		31	31	
		84.28	81.28	76.20	52.07	80.98	51.92	8.50	3.50	4.25	A1: [Pin Diagram] A31 B1: [Pin Diagram] B31	31	31		
C	10035388-202 10035388-202LF	84.28	81.28	76.20	N/A	80.98	N/A	8.50	3.50	4.25	ALL LOADED		31	31	
		84.28	81.28	76.20	N/A	80.98	N/A	8.50	3.50	4.25	A1: [Pin Diagram] A31 B1: [Pin Diagram] B31	31	31		
	10035388-203 10035388-203LF	84.28	81.28	76.20	N/A	80.98	N/A	8.50	3.50	4.25	ALL LOADED		31	31	
		94.44	91.44	86.36	N/A	91.14	N/A	8.50	3.50	4.25	A1: [Pin Diagram] A35 B1: [Pin Diagram] B35	35	35		
	10035388-300 10035388-300LF	86.82	83.82	78.74	54.61	83.52	54.46	8.50	3.50	4.25	ALL LOADED		32	32	
		86.82	83.82	78.74	54.61	83.52	54.46	8.50	3.50	4.25	A1: [Pin Diagram] A32 B1: [Pin Diagram] B32	32	32		
10035388-301 10035388-301LF	86.82	83.82	78.74	54.61	83.52	54.46	8.50	3.50	4.25	ALL LOADED		32	32		
	86.82	83.82	78.74	54.61	83.52	54.46	8.50	3.50	4.25	A1: [Pin Diagram] A32 B1: [Pin Diagram] B32	32	32			

Copyright FCI


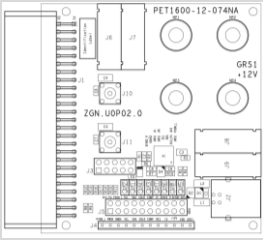
FCI

www.fciconnect.com		surface		tolerance std		projection		MM	
TOLERANCES UNLESS OTHERWISE SPECIFIED									
Dr	LH	2004-10-28	ANGULAR	LINEAR	SX #	025	size	A3	Scale
Eng	ERIC JIANG	2013-07-29			SXX#	S35		ECN	NONE
Chw	FANCY ZHANG	2013-07-29	Ø ± .01		0300#	040			
Appr	PM ZHENG	2013-07-29	Product: Family POWER EDGE CARD		Spec: ref				
FCI		POWER EDGE CARD CONNECTOR			10035388		Rev. AB		
		WITHOUT SIGNAL ASS'Y			CUSTOMER COPY		sheet 4 of 5		

Figure 29. Mating connector drawing page 3



**21. ACCESSORIES**

ITEM	DESCRIPTION	ORDERING PART NUMBER	SOURCE
	<b>I<sup>2</sup>C Utility</b> Windows XP/Vista/7 compatible GUI to program, control and monitor Front-End power supplies (and other I <sup>2</sup> C units)	ZS-00130	<a href="http://belfuse.com/power-solutions">belfuse.com/power-solutions</a>
	<b>Evaluation Board</b> Connector board to operate PET1600-12-074NA and PET1600-12-074ND. Includes an on-board USB to I <sup>2</sup> C converter (use <i>I<sup>2</sup>C Utility</i> as desktop software).	YTM.00045	<a href="http://belfuse.com/power-solutions">belfuse.com/power-solutions</a>

**22. REVISION HISTORY**

DATE	REVISION	ISSUE	PREPARED BY	APPROVED BY	ECO/MCO REFERENCE NO
2019/10/30	A	Release to A revision			C96708
2023-10-16	B	Remove the tolerance spec at section 18 Add or equivalent for inlet connector and wire at section 19 Update the safety approve standard and isolation strength at section 12			

**For more information on these products consult: [tech.support@psbel.com](mailto:tech.support@psbel.com)**

**NUCLEAR AND MEDICAL APPLICATIONS** - Products are not designed or intended for use as critical components in life support systems, equipment used in hazardous environments, or nuclear control systems.

**TECHNICAL REVISIONS** - The appearance of products, including safety agency certifications pictured on labels, may change depending on the date manufactured. Specifications are subject to change without notice.

