

Product & Service Overview



cinch
CONNECTIVITY SOLUTIONS
a bel group



belfuse.com/cinch

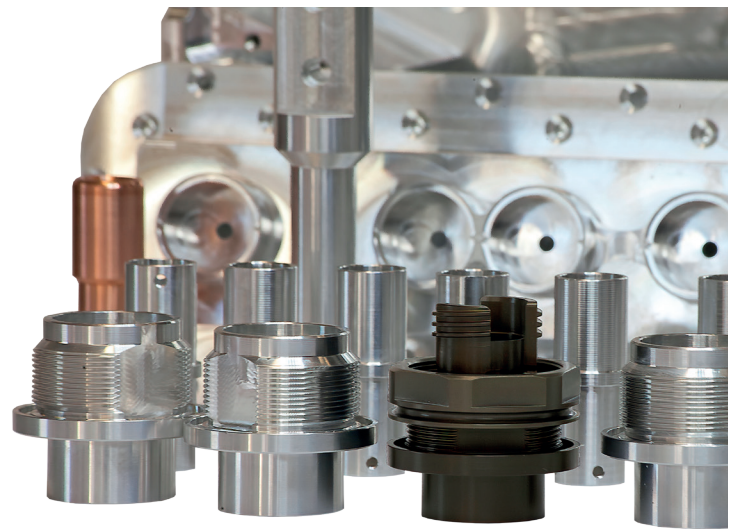
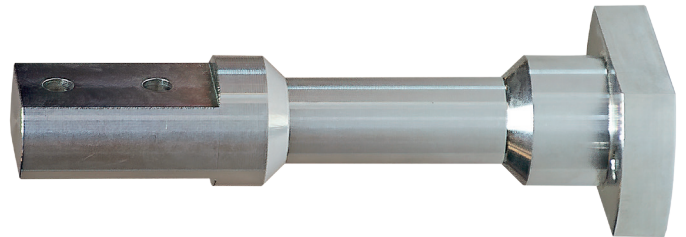
BCMZ Precision Engineering

For over 50 years BCMZ has been a successful provider of machined components, light assemblies, jigs and fixtures to the Automotive, Aerospace, Defense, Telecommunications, Fibre-Optic, and Medical Industrial markets.

BCMZ's ongoing investment in the latest machinery and technology enables us to manufacture a range of parts and components to high levels of accuracy, intricacy and quality, from a wide spectrum of raw materials. Our continued commitment to excellence in Quality and Service is validated by our BS EN ISO 9001:2015 accreditation - driven and supported by our highly skilled engineering team.

Products

- Assemblies
- Sub Assemblies
- Machined Components
- Pick-and-Place Fixtures
- Rugged Electrical Connectors
- Optical Axis Alignment Devices
- Medical Device Setting Apparatus
- General Jigs for Component Location

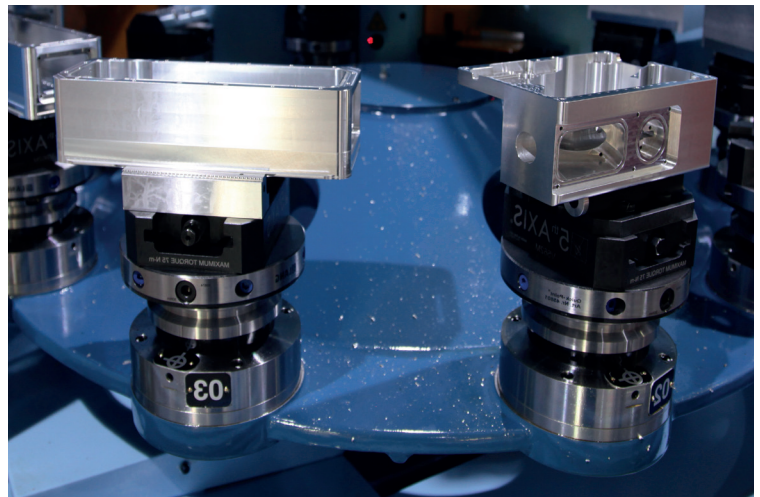


Services

- Prototyping
- Manufacture
- Finishing Processes

Plant List

- CAM Software
- Tool Room Facilities
- Full Inspection Facilities
- CNC Milling 3,4 and 5 Axis Machining
- CNC Turning Multi Axis and Sliding Head Machines





Cinch Connectivity Solutions North American Office

+1 507.833.8822
ccsorders@us.cinch.com

Cinch Connectivity Solutions Ltd European Office

+44 (0) 1245 342060
CinchConnectivity@eu.cinch.com

Cinch Connectivity Solutions Ltd Asia Pacific Office

+6 21 5442 7668
ccs.asia.sales@as.cinch.com

BCMZ UK Office

+44 (0) 1787 880 699
sales@bcmz.co.uk

Innovative Interconnect Solutions Across the Globe

In operation since 1917, Cinch supplies high quality, high performance connectors and cables globally to the Aerospace, Military/Defense, Commercial Transportation, Oil & Gas, High End Computer and other markets. We provide custom solutions with our creative, hands on engineering and end to end approach.

Our diverse product offerings include: connectors, enclosures and cable assemblies, utilizing multiple contact technologies including copper and fiber optics. Our product engineering and development activities employ cutting edge technologies for design and modeling, and our various technologies and expertise enable us to deliver custom solutions and products for our strategic partnerships. We also serve a broad range of commercial markets, largely through our highly efficient distribution network.

We aim to exceed our customer's expectations, and to continually provide innovative solutions to the rapidly changing needs of the markets and customers we serve. For more information, visit belfuse.com/cinch

About BCMZ

Acquired by Bel in 2018, BCMZ's in-house machining ability offers Cinch the capability to continue to support key defense and industrial customers across Europe. For more information, visit bcmz.co.uk



belfuse.com/cinch

© 2019 Cinch Connectivity Solutions