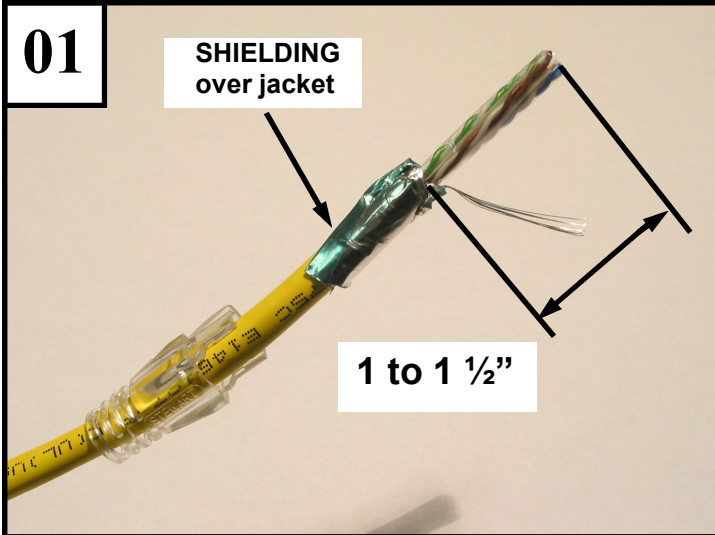
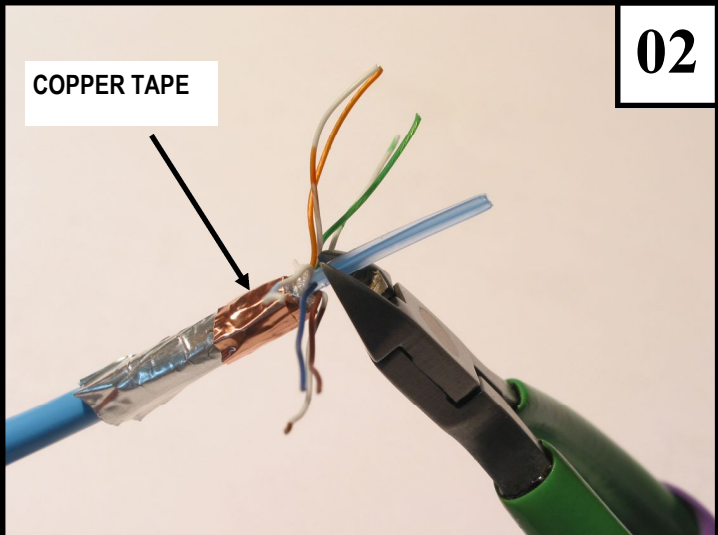


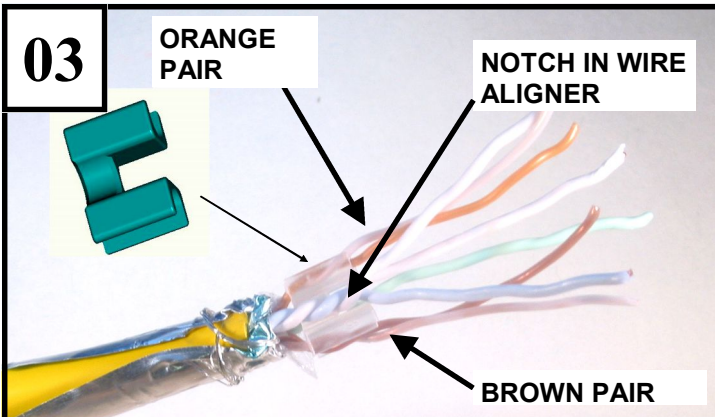
39200 Series Small Conductor Shielded Plug Assembly Instructions



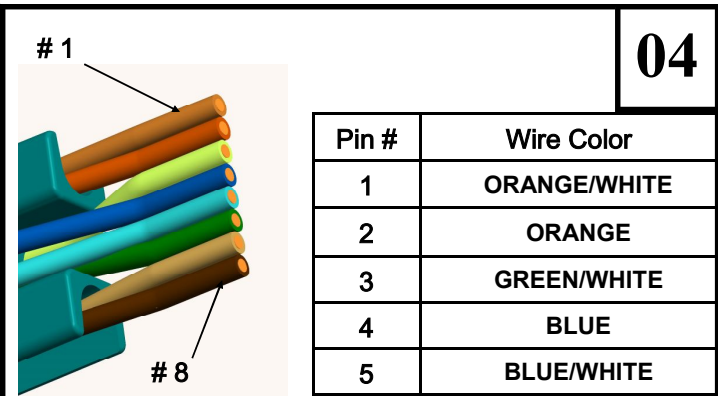
- Cut cable to length. Insert cable into the boot if used.
- Strip the jacket back 1 to 1 1/2 inches.
- Fold braid, or drain wire and foil back over the jacket. Wrap the drain wire around the foil if present.



- Wrap foil and drain with one wrap of copper tape.
- Spread the wire pairs apart.
- Carefully cut away any spline or filler strips from the end of the cable. Cut as close to the edge of the jacket as you can without nicking the wire insulation.



- Orient the **Orange** pair up and the **Brown** pair down.
- Insert the wire aligner so the notch is facing right. The **Blue** and **Green** pairs should straddle the wire aligner in the shallow channels. (Either the Blue or Green pair may be in front depending on which the end of the cable is used.)
- Keep the aligner tight against the jacket.
- Untwist the wire pairs. Stop untwisting at the edge of the wire aligner.

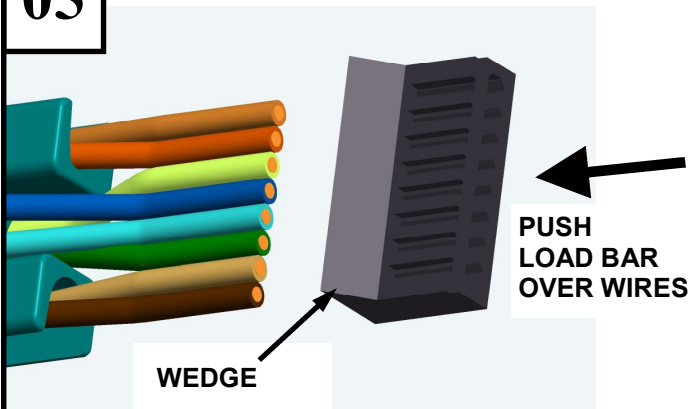


Pin #	Wire Color
1	ORANGE/WHITE
2	ORANGE
3	GREEN/WHITE
4	BLUE
5	BLUE/WHITE
6	GREEN
7	BROWN/WHITE
8	BROWN

- Smooth out the wires as straight as possible.
- Align wires to standard (T568B Shown above).
- Trim off a little of each wires so the ends are all even. Leave at least 3/4 of an inch sticking out of the wire aligner.

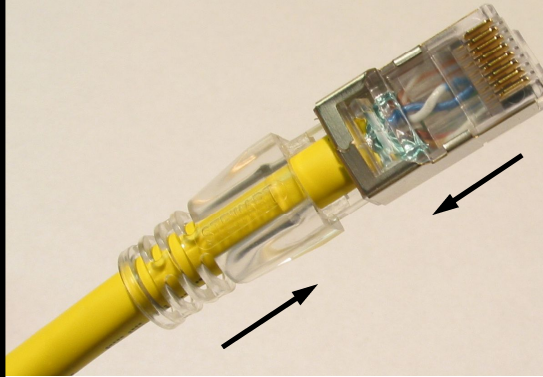
39200 Series Small Conductor Shielded Plug Assembly Instructions

05



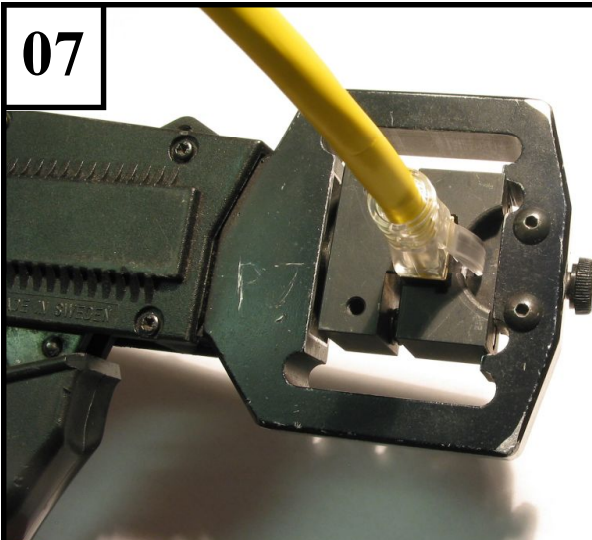
- Insert the ends of the wires into the load bar keeping wedge toward you (see picture).
- Pull the wires through the load bar and seat the load tight against the wire aligner.
- Trim off the wires flush to the end of the load bar

06



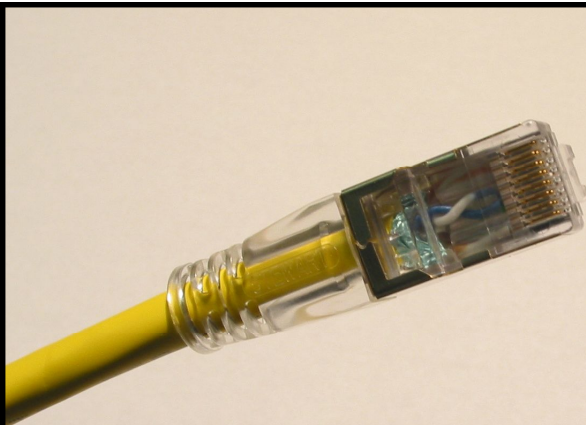
- Insert the load bar and wires into the back of the plug housing keeping the plug contacts toward you.
- Push the load bar in until it is fully seated against the front of the plug housing.
- Ensure that the ends of the wires have not backed out of the load bar and are still flush with the front edge.

07



- Trim off any excess shield.
- If using a boot, insert the boot tight against the back of the plug body.
- Make sure that the plug latch tab is under the anti-slug.
- Fully insert the plug into the termination tool and close the handle.

08



- Remove the terminated plug from the tool .
- Repeat this procedure for the other end of the cable.
- Inspect and test your cable.