

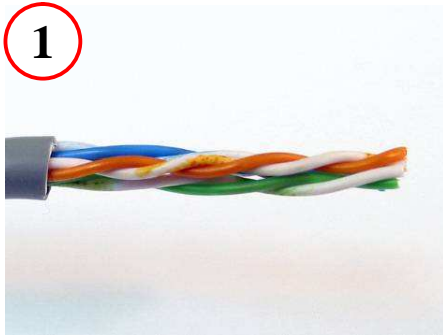
Stewart Connector

UNSHIELDED 2-PIECE 30 SERIES PLUG
ASSEMBLY INSTRUCTIONS

11118 Susquehanna Trail South Glen Rock, PA 17327

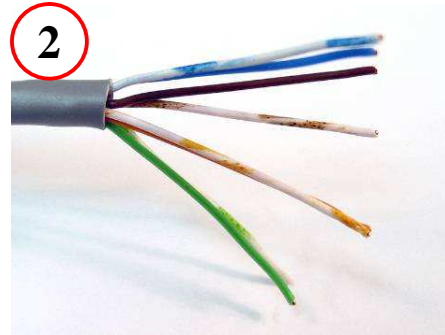
STEWART CONNECTOR UNSHIELDED 2-PIECE 30 SERIES PLUG ASSEMBLY INSTRUCTIONS

Assembly steps 1 – 10:



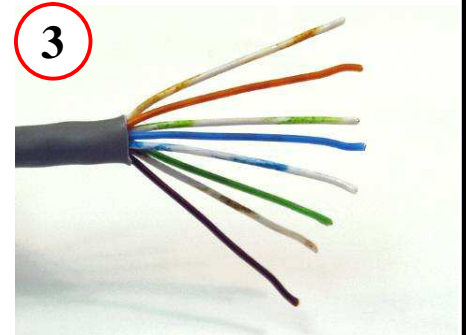
1

Remove approximately 1 ¼ inch of Cable Jacket



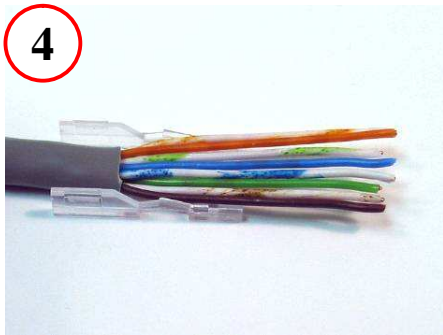
2

Separate Pairs and untwist them



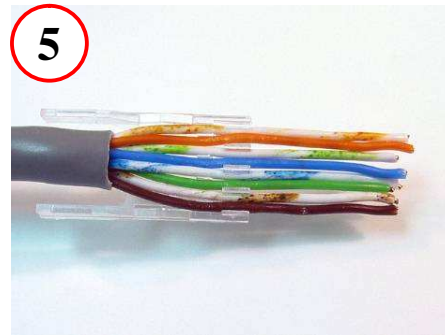
3

Align wires (TIA 568-B shown)



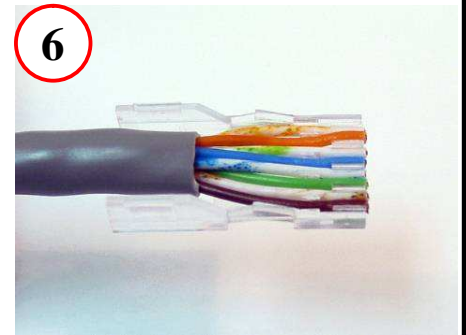
4

Lay wires into approx. positions in Load Bar



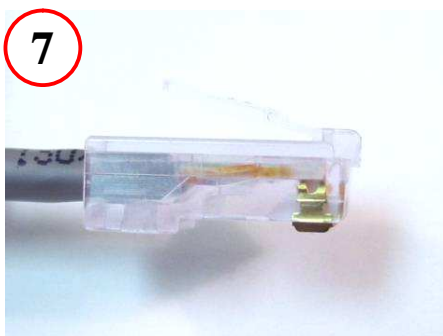
5

Insert each pair, being careful not to collapse ribs between each pair



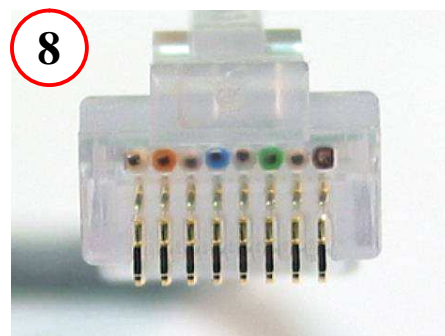
6

Trim wires flush with end of Load Bar



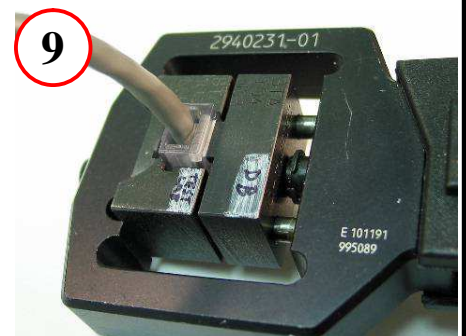
7

Insert wires and Load Bar into housing



8

Ensure wires go all the way to front of housing

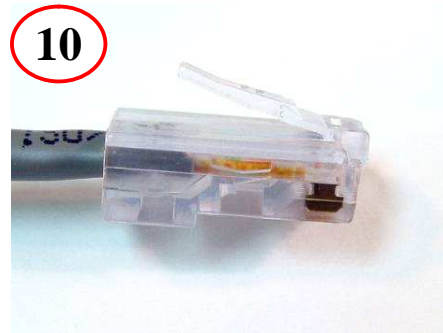


9

Crimp wires and strain relief

STEWART CONNECTOR UNSHIELDED 2-PIECE 30 SERIES PLUG ASSEMBLY INSTRUCTIONS

Assembly steps 1 – 10 (Cont.):



Assembly Complete