

# Omega CN0942/CN0944 Series

## Short Receptacle Connectors

### The Cinch Advantage

Cinch has engineered the CN0942 and CN0944 fixed contact receptacle connectors specifically for custom board mount, flex circuit, and soldered wire applications. These connectors are based on our MIL-C-26500 connectors and meet all electrical and mechanical requirements of the military specification. Our receptacles have a proven track record and currently fly on numerous aircraft applications.

### Key Features

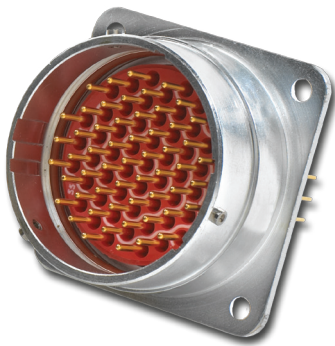
- Fixed contacts
- Low profile shell
- Standard interface

### Mounting Options

- Single-hole
- Square flange
- Knurled panel
- Standoff
- Clinch nuts

### Termination Options

- PC tails for circuit board or flex
- Solder cup for discrete wire
- Square posts for wire wrap



Features	Benefits
Standard interface	Mates with MIL-C-26500, BACC45/63, M83723 series III connectors
Fixed contacts	Positive contact position provides perfect alignment to board
Potted-in contacts	Allows custom configurations for low volume applications (CN0942)
Molded-in contacts	Most economical for high volume applications (CN0944)
Low profile shell	Weight and space savings

# Product Offering

## Insert Styles

- Fluorosilicone insert with contacts potted in place - CN0942 series
- Neoprene insert with contacts molded in place - CN0944 series

## Shell Materials/Finishes

- Aluminum shell with hard anodized type III finish
- Aluminum shell with standard anodized type II finish
- Aluminum shell with cadmium over electroless nickel finish
- Aluminum shell with electroless nickel finish
- Stainless steel shell with passivated finish

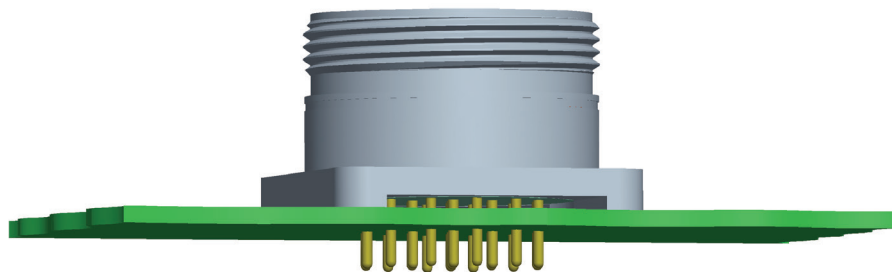
## Shell Styles

- Square flange mount with bayonet coupling
- Square flange mount with threaded coupling
- Single hole mount with bayonet coupling
- Single hole mount with threaded coupling



## Contact Genders

- Pin
- Socket



For more information, contact Cinch Connectivity Solutions for a product specialist to assist you in choosing the correct or custom configuration for your application. Cinch's Omega marketing team can be reached at +1 800.323.9612 or email us directly at [inquiry@us.cinch.com](mailto:inquiry@us.cinch.com)



Cinch Connectivity Solutions  
1700 Finley Road  
Lombard, IL 60148 USA

+1 630.705.6000  
[inquiry@us.cinch.com](mailto:inquiry@us.cinch.com)  
[cinch.com](http://cinch.com)