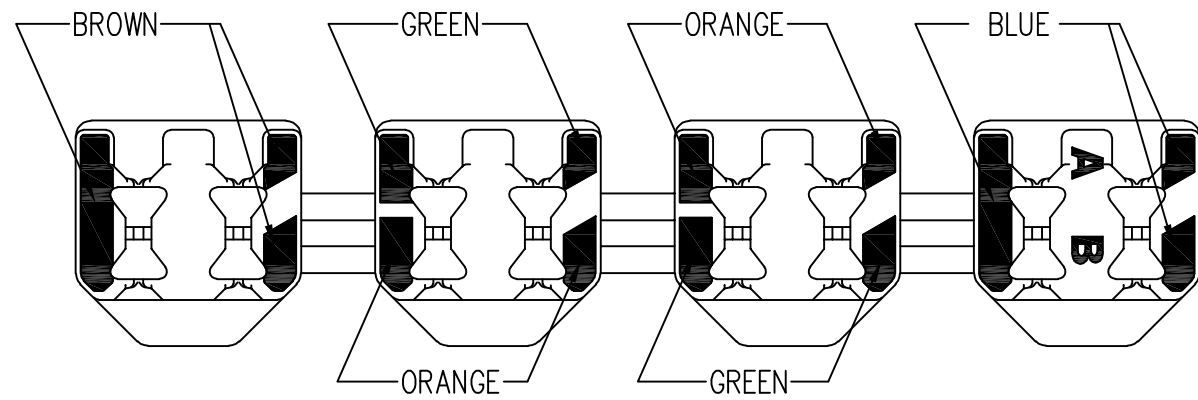
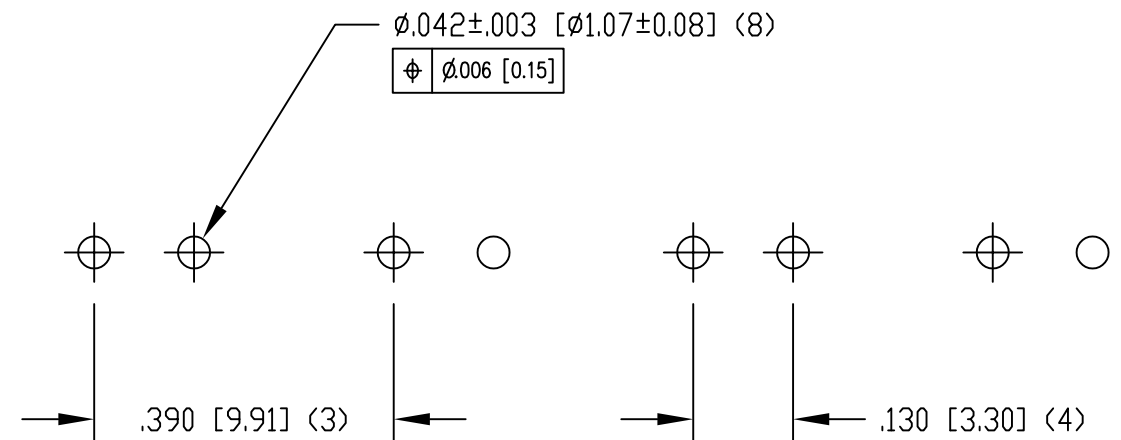
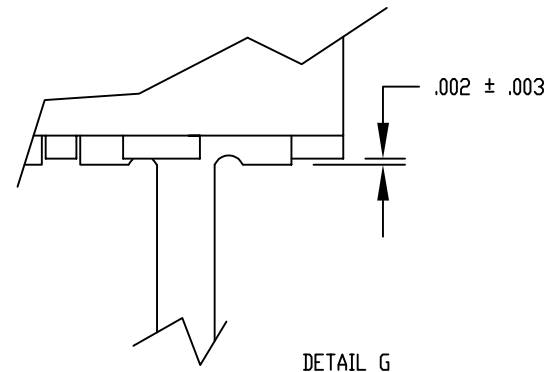
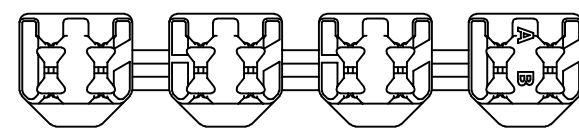


DATE	REV	ECN	APP'D. BY
3-19-15	A2	10289	TRM
3-28-16	A3	10635	TRM
10-26-22	A4	12063	JMM



COLOR CODE DETAIL

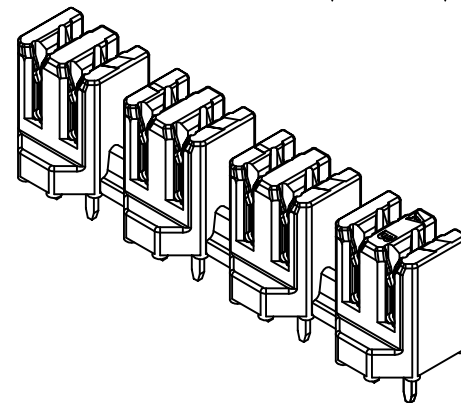
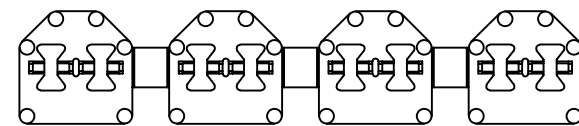
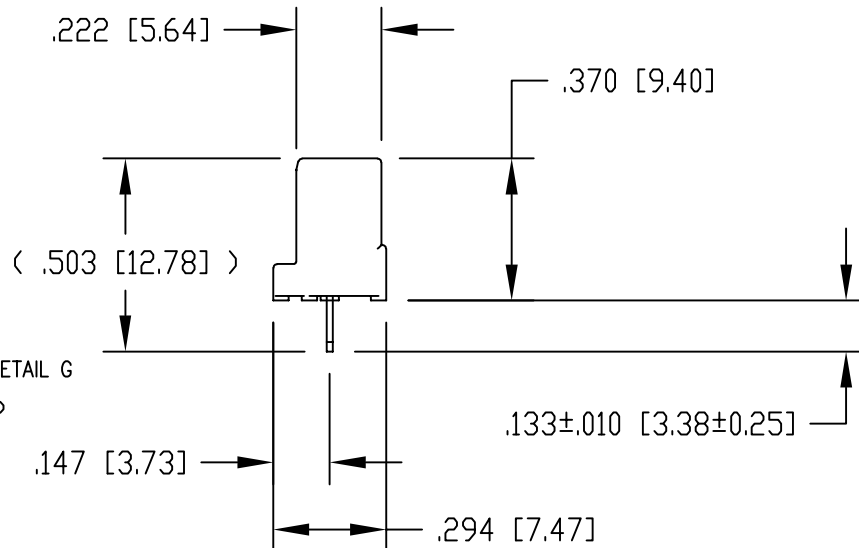
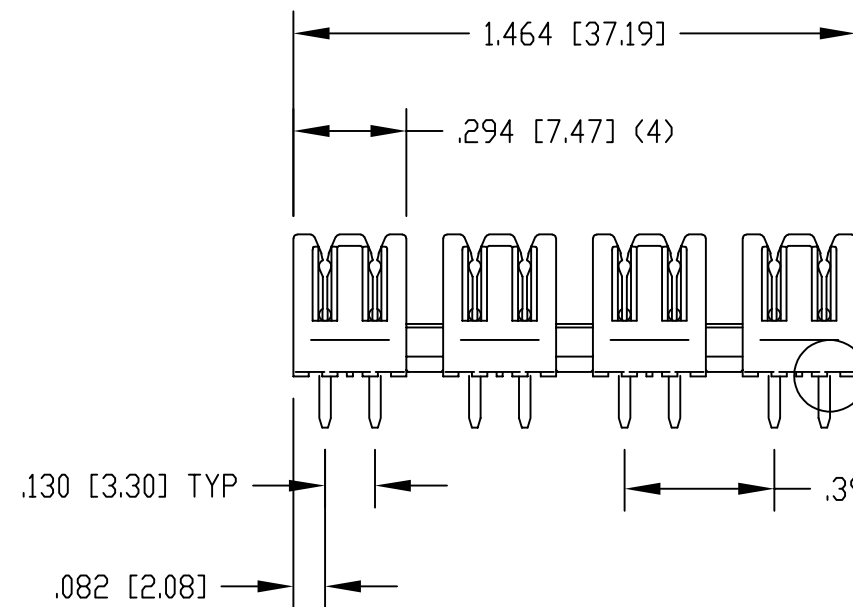


P.C.B. RECOMMENDED HOLE LAYOUT  
SEEN FROM COMPONENT SIDE

ALL CENTERLINE DIMENSIONS ARE BASIC.

NOTES:

- CONNECTOR MATERIALS:  
HOUSING: THERMOPLASTIC UL94 V-0  
CONTACTS: COPPER ALLOY  
CONTACT PLATING: TIN
- DESIGNED FOR CATEGORY 6A APPLICATIONS.
- IDC CONTACTS TERMINATE 22 AWG TO 26 AWG SOLID CONDUCTOR WIRE.
- FOR PRODUCT SPECIFICATION SEE PR031-01



SS-51000-004
PART NUMBER

THIRD ANGLE PROJECTION		11118 Susquehanna Trail South Glen Rock, PA 17327-9199 (717) 235-7512 <a href="http://www.stewartconnector.com">http://www.stewartconnector.com</a>	
DO NOT SCALE DRAWING DRAWING IS SUBJECT TO CHANGE WITHOUT NOTICE		TITLE: CATEGORY 6A, 4 PAIR PUNCHDOWN BLOCK MARKED WITH COLOR CODE	
DIMENSIONS: INCHES [METRIC]	THIS DRAWING AND THE SUBJECT MATTER SHOWN THEREON ARE CONFIDENTIAL AND THE PROPRIETARY PROPERTY OF STEWART CONNECTOR AND SHALL NOT BE REPRODUCED, COPIED, OR USED IN ANY MANNER WITHOUT PRIOR WRITTEN CONSENT OF STEWART CONNECTOR. ONE OR MORE U.S. PATENTS MAY APPLY TO THIS PRODUCT. FOR DETAILS, PLEASE VISIT: <a href="http://BELFUSE.COM/STEWART/STEWART_PATENTS/">HTTP://BELFUSE.COM/STEWART/STEWART_PATENTS/</a>	DRN BY: DHG	DATE: 3-23-07
UNLESS OTHERWISE SPECIFIED TOLERANCES ARE ±.005 [0.13] ANGLES ARE ± 1°		APPD BY: TRM	DATE: 3-23-07
SHEET NO. 1 OF 1		DWG NO. CT510004	REV. A4