

THE INFORMATION CONTAINED HEREIN IS CONSIDERED "PROPRIETARY" TO BEL FUSE INC. AND SHALL NOT BE COPIED, REPRODUCED OR DISCLOSED WITHOUT THE WRITTEN APPROVAL OF BEL FUSE INC.

LED1 POLARITY			LED2 POLARITY		
PIN 13	PIN 14	COLOR	PIN 15	PIN 16	COLOR
-	+	YELLOW	-	+	GREEN
			+	-	ORANGE

RoHS



# ELECTRICAL CHARACTERISTICS @ 25°C

## URNS RATIO

TP1	1CT : 1CT ±2%
TP2	1CT : 1CT ±2%
TP3	1CT : 1CT ±2%
TP4	1CT : 1CT ±2%

## CL @ 100kHz/100mVRMS

8mA DC BIAS	350µH MIN.
-------------	------------

## INS. LOSS

0.1MHz TO 1MHz	-1.1 dB MAX
1MHz TO 65MHz	-0.5 dB MAX
65MHz TO 100MHz	-0.8 dB MAX
100MHz TO 125MHz	-1.2 dB MAX

## RET. LOSS (MIN)

0.5MHz-40MHz	-18 dB
40MHz-100MHz	-12+20LOG(f/80MHz) dB

## CM TO CM REJ

100kHz - 100MHz	-30 dB MIN
-----------------	------------

## CM TO DM REJ

100kHz - 100MHz	-35 dB MIN
-----------------	------------

## HIPOT (Isolation Voltage): 1500 Vrms or 2250VDC

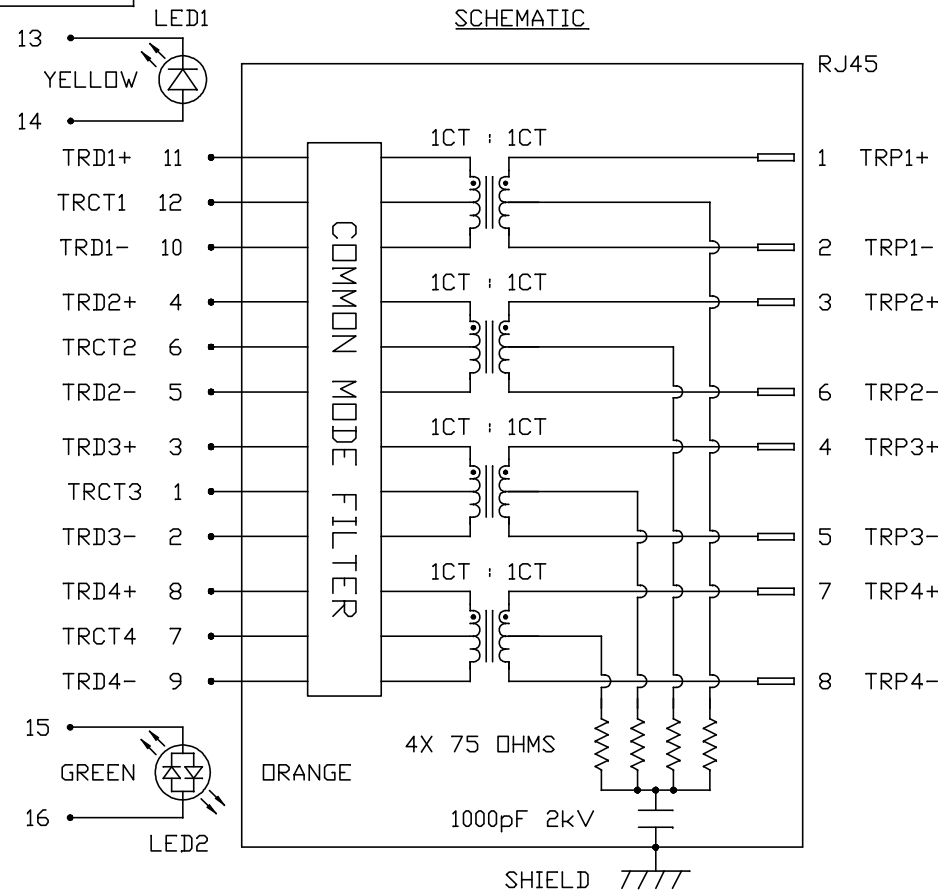
## LED 1

V <sub>F</sub> (FORWARD VOLTAGE)	IF=20mA	YELLOW	2.1V TYP.
λ <sub>D</sub> (DOMINANT WAVELENGTH)	IF=20mA	YELLOW	590nm TYP.

## LED 2

V <sub>F</sub> (FORWARD VOLTAGE)	IF=20mA	GREEN	2.2V TYP.
		ORANGE	2.0V TYP.
λ <sub>D</sub> (DOMINANT WAVELENGTH)	IF=20mA	GREEN	570nm TYP.
		ORANGE	605nm TYP.

OPERATING TEMPERATURE: 0°C TO 70°C



ORIGINATED BY  
CHOW WANCHUNG  
DATE 2018-12-19

TITLE  
1x4 gigabit MagJack®  
(8 cores, Tab Up)  
L826-1X4T-43-F  
PATENTED

DRAWN BY  
XIE YIMING  
DATE 2018-12-19

PART NO. / DRAWING NO.  
L8261X4T43-F

FILE NAME  
L8261X4T43-F\_D.DWG

STANDARD DIM.  
TOL. IN INCH [ ] METRIC DIM.  
AS REF.

.X  
.XX  
.XXX

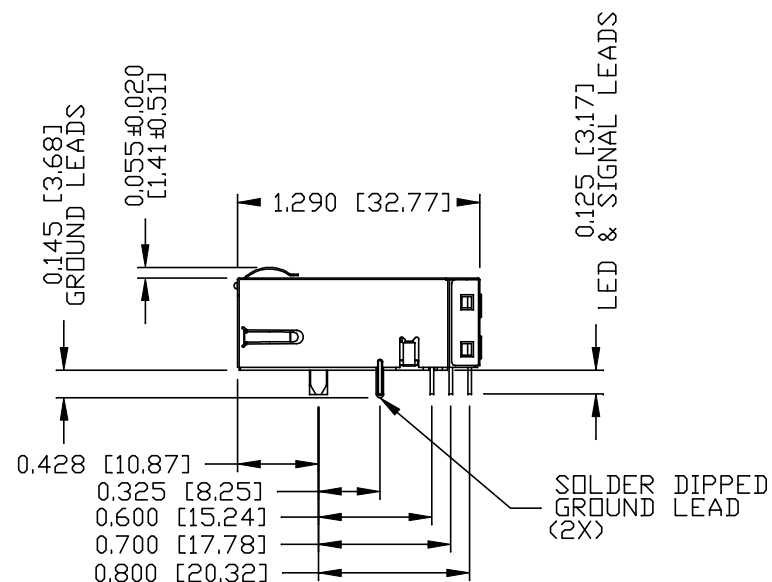
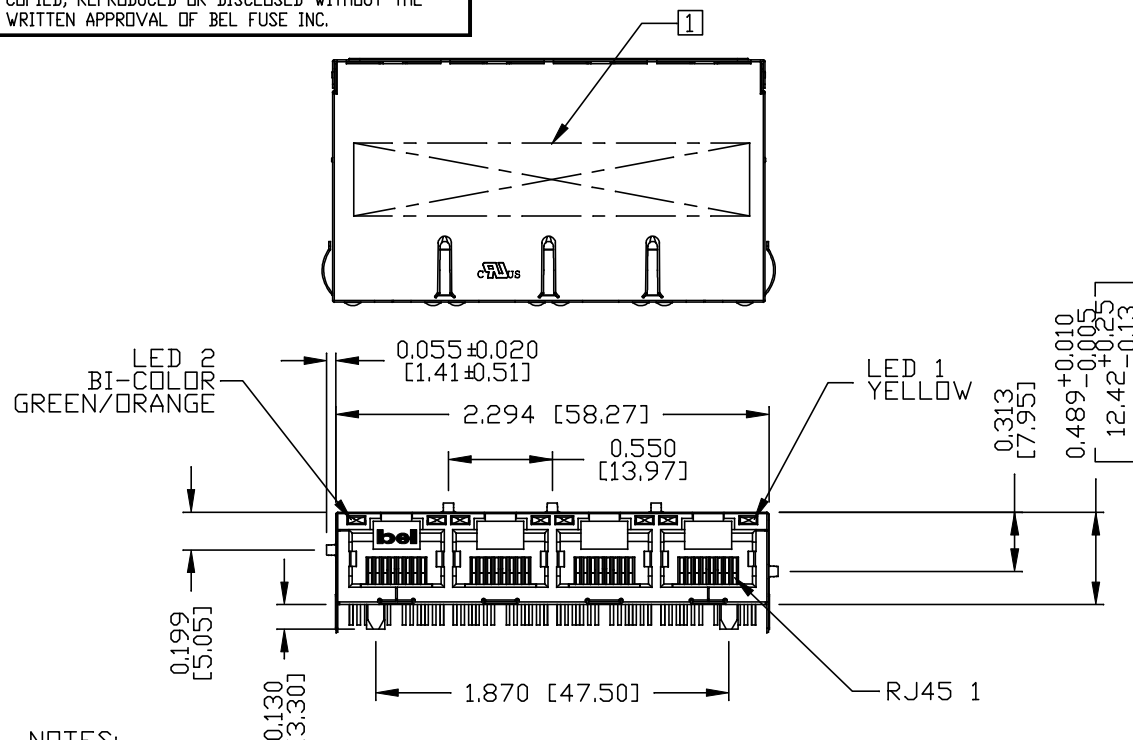
UNIT : INCH [mm]  
SCALE : N/A  
SIZE : A4

REV. : D PAGE : 2



THE INFORMATION CONTAINED HEREIN IS CONSIDERED 'PROPRIETARY' TO BEL FUSE INC. AND SHALL NOT BE COPIED, REPRODUCED OR DISCLOSED WITHOUT THE WRITTEN APPROVAL OF BEL FUSE INC.

RoHS



#### NOTES:

- PLASTIC HOUSING: THERMOPLASTIC PBT, BLACK  
FLAMMABILITY RATING UL 94V-0
- CONTACTS PLATING: 50 MICRO-INCH HARD GOLD PLATING OR EQUIVALENT  
PINS: TIN-COATED COPPER WIRE, DIA 0.018 INCH,  
100 MICRO-INCH MIN MATTE TIN.  
PINS ARE SOLDER DIPPED.
- METAL SHIELD: NICKEL PLATED ON COPPER ALLOY.  
(ALL GROUND LEADS ARE SOLDER DIPPING)

- [1] MARK PART WITH MFG LOGO, MFG NAME, PART NUMBER,  
DATE CODE AND PATENTED.
2. JACK CAVITY CONFORMS TO FCC RULES AND REGULATIONS.

3. THE PRODUCT IS RoHS COMPLIANCE.
4. THE PRODUCT IS PATENT PRODUCT. THE PATENT  
NUMBER IS U.S. PAT. 7,123,117.
5. THE PART IS RECOMMENDED FOR WAVE SOLDERING. THE  
SUGGESTED PEAK WAVE SOLDERING CONDITION IS 260°C  
MAX AND 10 SECONDS MAX.

ORIGINATED BY  
ANTON LIAO  
DATE 2018-12-19

DRAWN BY  
LI QUANKUN  
DATE 2018-12-19

TITLE  
1x4 gigabit MagJack®  
(8 cores, Tab Up)  
L826-1X4T-43-F  
PATENTED

PART NO. / DRAWING NO.  
L8261X4T43-F

FILE NAME  
L8261X4T43-F\_D.DWG

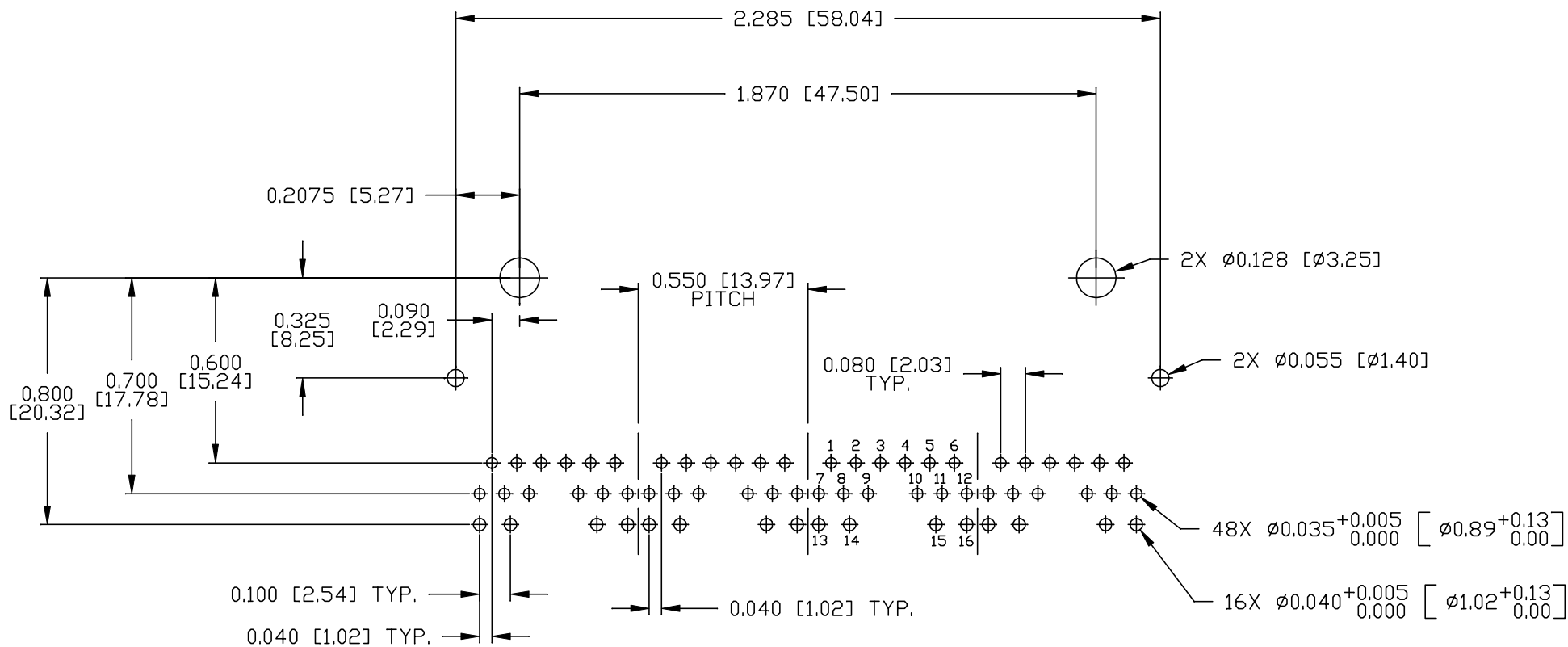
STANDARD DIM. TOL. IN INCH		[ ] METRIC DIM. AS REF.	
.X		UNIT : INCH [mm]	
.XX		SCALE : N/A	
.XXX	±0.010	⊕ ⊖	SIZE : A4

REV. : D PAGE : 3



THE INFORMATION CONTAINED HEREIN IS CONSIDERED  
"PROPRIETARY" TO BEL FUSE INC. AND SHALL NOT BE  
COPIED, REPRODUCED OR DISCLOSED WITHOUT THE  
WRITTEN APPROVAL OF BEL FUSE INC.

RoHS



RECOMMENDED PCB FOOTPRINT  
(COMPONENT SIDE VIEW)

<b>ORIGINATED BY</b> ANTON LIAO <b>DATE</b> 2018-12-19		<b>TITLE</b> 1X4 gigabit MagJack® (8 cores, Tab Up) L826-1X4T-43-F PATENTED		<b>PART NO. / DRAWING NO.</b> L8261X4T43-F		<b>STANDARD DIM.</b> TOL. IN INCH		<b>[ ] METRIC DIM.</b> AS REF.		<b>REV. :</b> D	<b>PAGE :</b> 4
<b>DRAWN BY</b> LI QUANKUN <b>DATE</b> 2018-12-19		<b>FILE NAME</b> L8261X4T43-F_D.DWG		<b>.X</b>		<b>.XX</b>		<b>.XXX</b>		<b>UNIT : INCH [mm]</b>	
										<b>SCALE : N/A</b>	
										<b>SIZE : A4</b>	

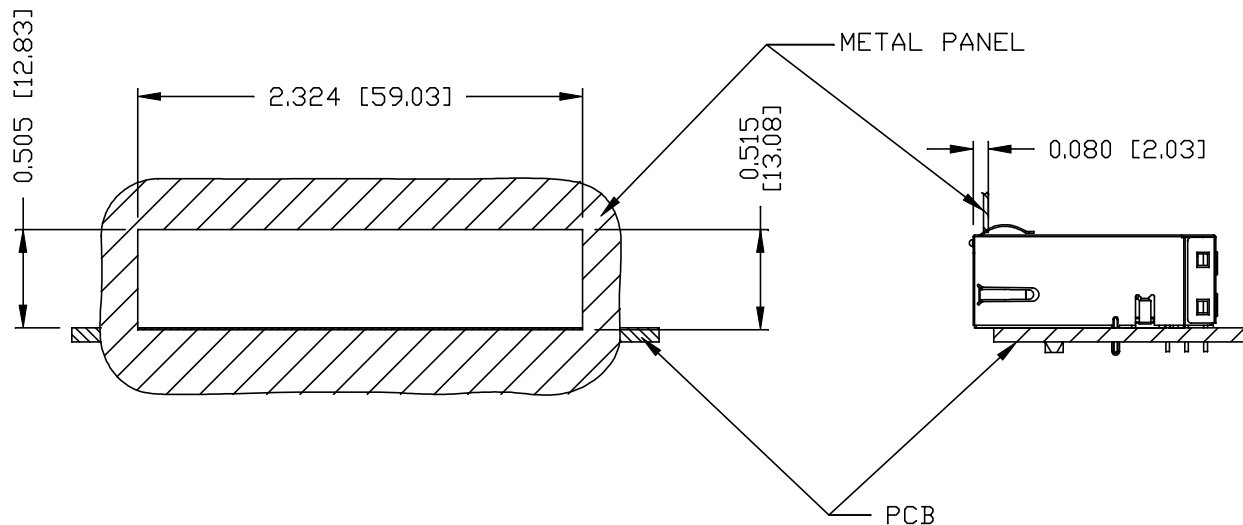


THE INFORMATION CONTAINED HEREIN IS CONSIDERED  
 'PROPRIETARY' TO BEL FUSE INC. AND SHALL NOT BE  
 COPIED, REPRODUCED OR DISCLOSED WITHOUT THE  
 WRITTEN APPROVAL OF BEL FUSE INC.

RoHS



### SUGGESTED PANEL OPENING



### NOTE:

THE DISTANCE OF PANEL INSIDE SURFACE RELATIVE TO FRONT SURFACE OF PART IS ONLY A SUGGESTION.  
 IN CASE THIS DISTANCE IS DIFFERENT, THE REQUIRED PANEL OPENING DIMENSIONS CHANGE ACCORDINGLY.

### PACKING INFORMATION

PACKING TRAY: 0200-9999-D3 (TOP)

0200-9999-B5 (BOTTOM)

PACKING QUANTITY: 24 PCS FINISHED GOODS PER TRAY

10 TRAYS (240PCS FINISHED GOODS) PER CARTON BOX

REMARK: CARDBOARDS ARE PLACED BETWEEN LAYERS OF PACKING TRAY INSIDE CARTON BOX  
 (INCLUDE THE UPPERMOST AND LOWERMOST TRAY)

ORIGINATED BY  
 ANTON LIAO  
 DATE 2018-12-19

TITLE  
 1X4 gigabit MagJack®  
 (8 cores, Tab Up)  
 L826-1X4T-43-F  
 PATENTED

DRAWN BY  
 LI QUANKUN  
 DATE 2018-12-19

PART NO. / DRAWING NO.  
 L8261X4T43-F

FILE NAME  
 L8261X4T43-F\_D.DWG

STANDARD DIM.  
 TOL. IN INCH

.X  
 .XX  
 .XXX

[ ] METRIC DIM.  
 AS REF.

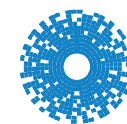
UNIT : INCH [mm]

SCALE : N/A

SIZE : A4

REV. : D

PAGE : 5



**bel** MAGNETIC  
 SOLUTIONS  
 a bel group