

THE INFORMATION CONTAINED HEREIN IS CONSIDERED "PROPRIETARY" TO BEL FUSE INC. AND SHALL NOT BE COPIED, REPRODUCED OR DISCLOSED WITHOUT THE WRITTEN APPROVAL OF BEL FUSE INC.

RoHS

LED1 POLARITY			LED2 POLARITY		
PIN 13	PIN 14	COLOR	PIN 15	PIN 16	COLOR
-	+	YELLOW	+	-	ORANGE
			-	+	GREEN

ELECTRICAL CHARACTERISTICS @ 25°C**URNS RATIO**

TP1	1CT : 1CT $\pm 2\%$
TP2	1CT : 1CT $\pm 2\%$
TP3	1CT : 1CT $\pm 2\%$
TP4	1CT : 1CT $\pm 2\%$

DCL @ 100kHz/100mVRMS

8mA DC BIAS

350 μ H MIN.**INS. LOSS**

0.1MHz TO 1MHz

-1.1 dB MAX

1MHz TO 65MHz

-0.5 dB MAX

65MHz TO 100MHz

-0.8 dB MAX

100MHz TO 125MHz

-1.2 dB MAX

RET. LOSS (MIN)

0.5MHz-40MHz

-18 dB

40MHz-100MHz

-12+20LOG(f/80MHz) dB

CM TO CM REJ

100kHz - 100MHz

-30 dB MIN

CM TO DM REJ

100kHz - 100MHz

-35 dB MIN

HIPOT (Isolation Voltage):

1500 Vrms or 2250VDC

100% OF PRODUCTION TESTED TO COMPLY

WITH IEEE 802.3 ISOLATION REQUIREMENT

OPERATING TEMPERATURE:

-40 TO +85°C

LED 1

VF (FORWARD VOLTAGE)

IF=20mA YELLOW 2.1V TYP.

 λ D (DOMINANT WAVELENGTH)

IF=20mA YELLOW 590nm TYP.

LED 2

VF (FORWARD VOLTAGE)

IF=20mA ORANGE 2.0V TYP.

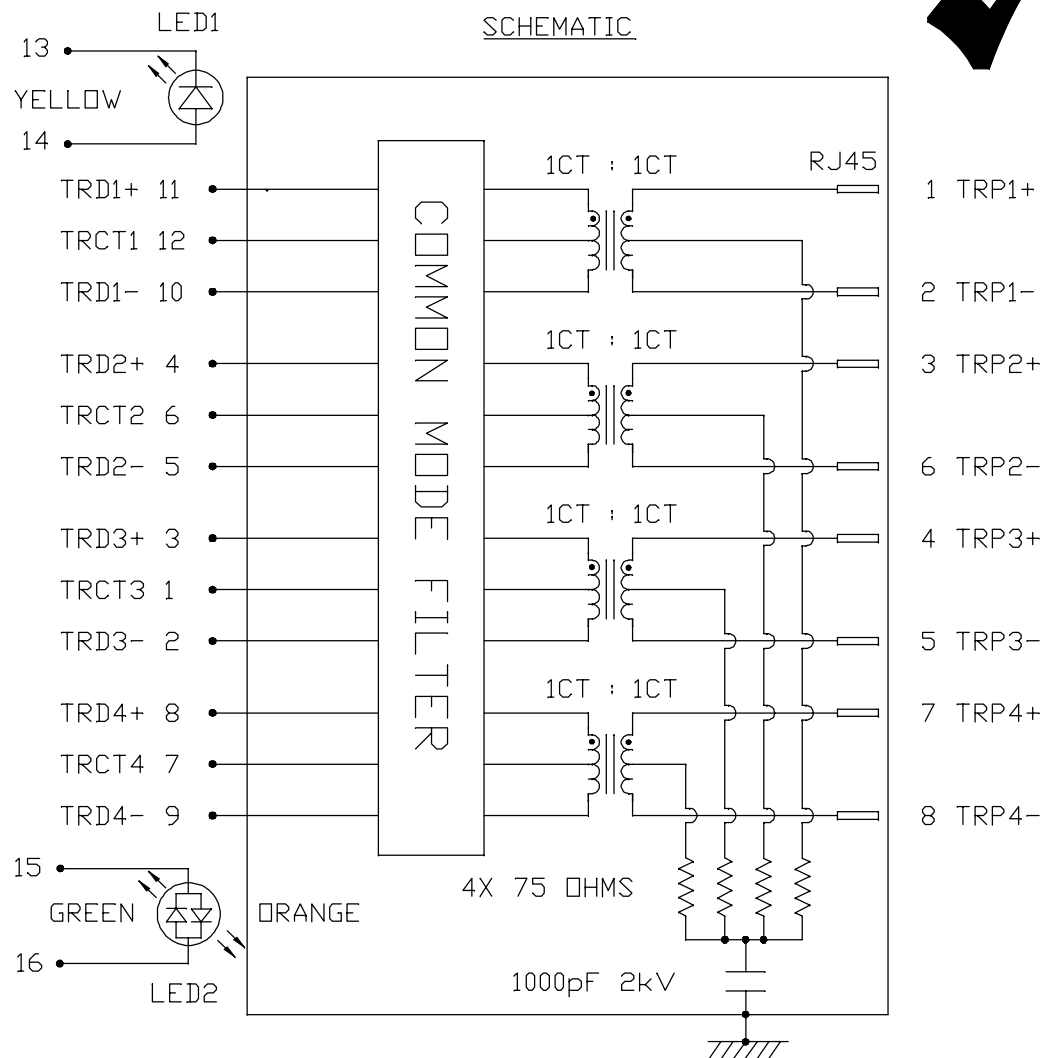
IF=20mA GREEN 2.2V TYP.

 λ D (DOMINANT WAVELENGTH)

IF=20mA ORANGE 610nm TYP.

IF=20mA GREEN 570nm TYP.

OPERATING TEMPERATURE: -40 TO +85°C



REV. : E

PAGE : 2

ORIGINATED BY
CHOW WANCHUNG
DATE 2016-08-10

DRAWN BY
SKY YOU
DATE 2016-08-10

TITLE
gigabit MagJack®
(Ext. Temp, Tab Up)
0826-1X1T-32-F
PATENTED

PART NO. / DRAWING NO.
08261X1T32-F

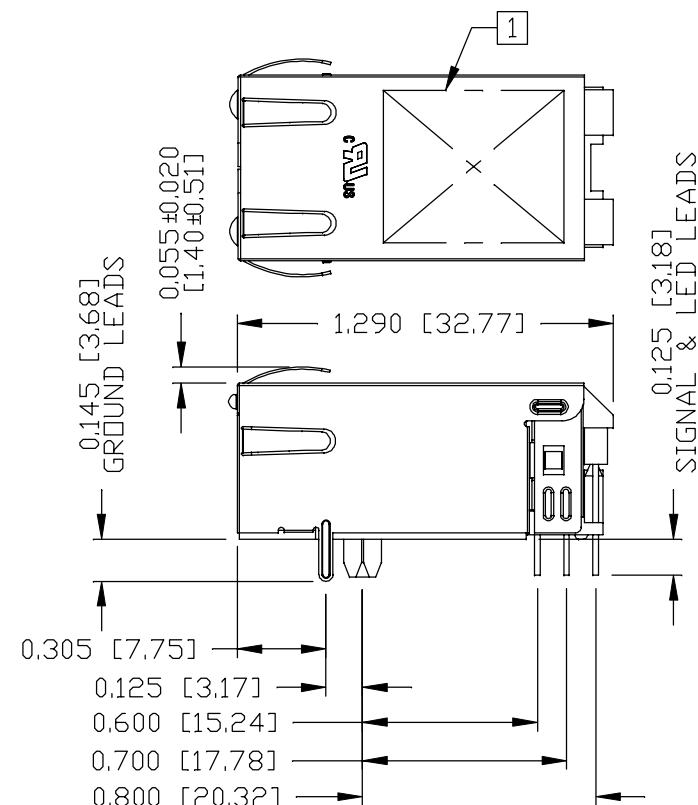
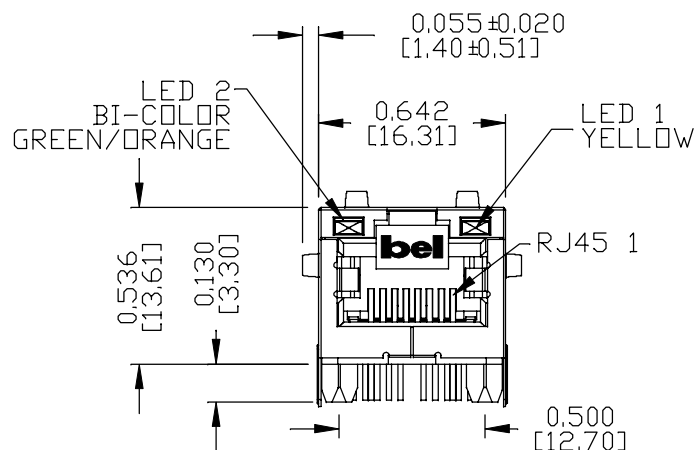
FILE NAME
08261X1T32-F_E.DWG

STANDARD DIM.
TOL. IN INCH
[] METRIC DIM.
AS REF.
UNIT : INCH [mm]
SCALE : N/A
SIZE : A4



THE INFORMATION CONTAINED HEREIN IS CONSIDERED "PROPRIETARY" TO BEL FUSE INC. AND SHALL NOT BE COPIED, REPRODUCED OR DISCLOSED WITHOUT THE WRITTEN APPROVAL OF BEL FUSE INC.

MECHANICAL SPECIFICATION



RoHS



NOTES:

PLASTIC HOUSING: THERMOPLASTIC PA, BLACK

FLAMMABILITY RATING UL 94V-0

CONTACTS: 50 MICRO-INCH HARD GOLD PLATING OR EQUIVALENT,
30 MICRO-INCH MIN NICKEL UNDERPLATE.

OUTPUT PINS: TIN-COATED COPPER WIRE, DIA 0.018 INCH.

100 MICRO-INCH MIN MATTE TIN. PINS ARE SOLDER DIPPED.

METAL SHIELD: NICKEL PLATED ON COPPER ALLOY.

(ALL GROUND LEADS ARE SOLDER DIPPED)

[1] MARK PART WITH MFG LOGO, MFG NAME, PART NUMBER, DATE CODE AND PATENTED.



UL RECOGNIZED - FILE #E196366 AND E169987.

2. THE PRODUCT IS RoHS COMPLIANT.

3. JACK CAVITY CONFORMS TO FCC RULES AND REGULATIONS.

4. THE PART IS RECOMMENDED FOR WAVE SOLDERING. THE SUGGESTED
PEAK WAVE SOLDERING CONDITION IS 260°C MAX AND 10 SECONDS MAX.5. THE PRODUCT IS PATENTED, THE PATENT NUMBER IS
U.S. PAT. 7,123,117.ORIGINATED BY
ANTON LIAO
DATE 2016-08-10DRAWN BY
JESSE LI
DATE 2016-08-10TITLE
gigabit MagJack®
(Ext. Temp, Tab Up)
0826-1X1T-32-F
PATENTEDPART NO. / DRAWING NO.
08261X1T32-FFILE NAME
08261X1T32-F_E.DWGSTANDARD DIM.
TOL. IN INCH

.X

.XX

.XXX

[] METRIC DIM.
AS REF.

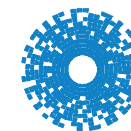
UNIT : INCH [mm]

SCALE : N/A

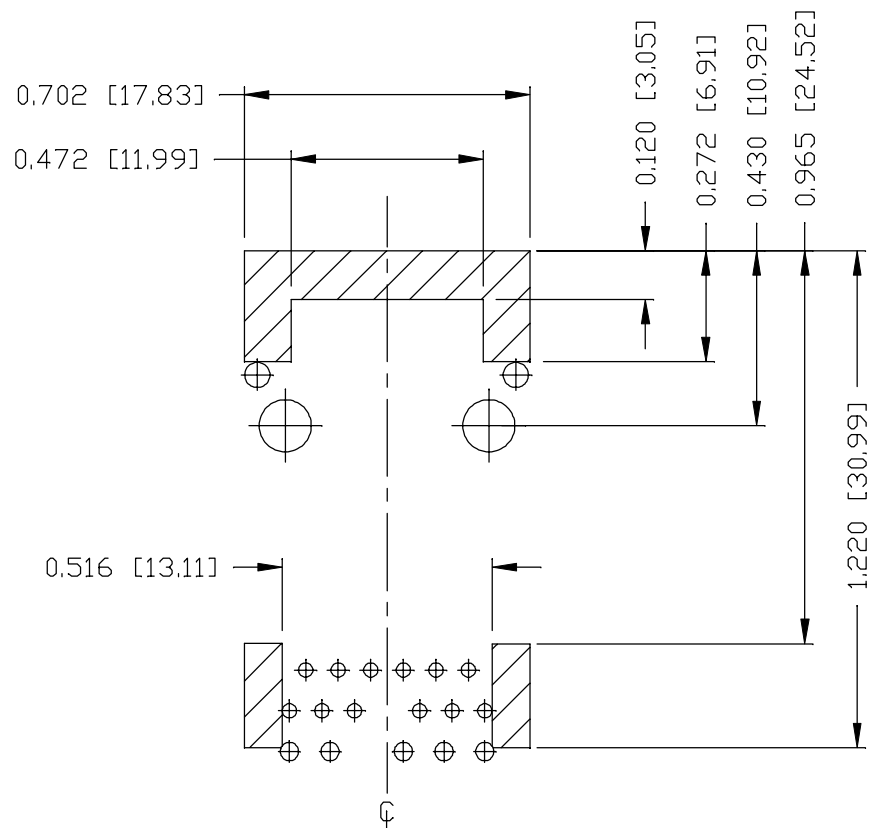
SIZE : A4

REV. : E

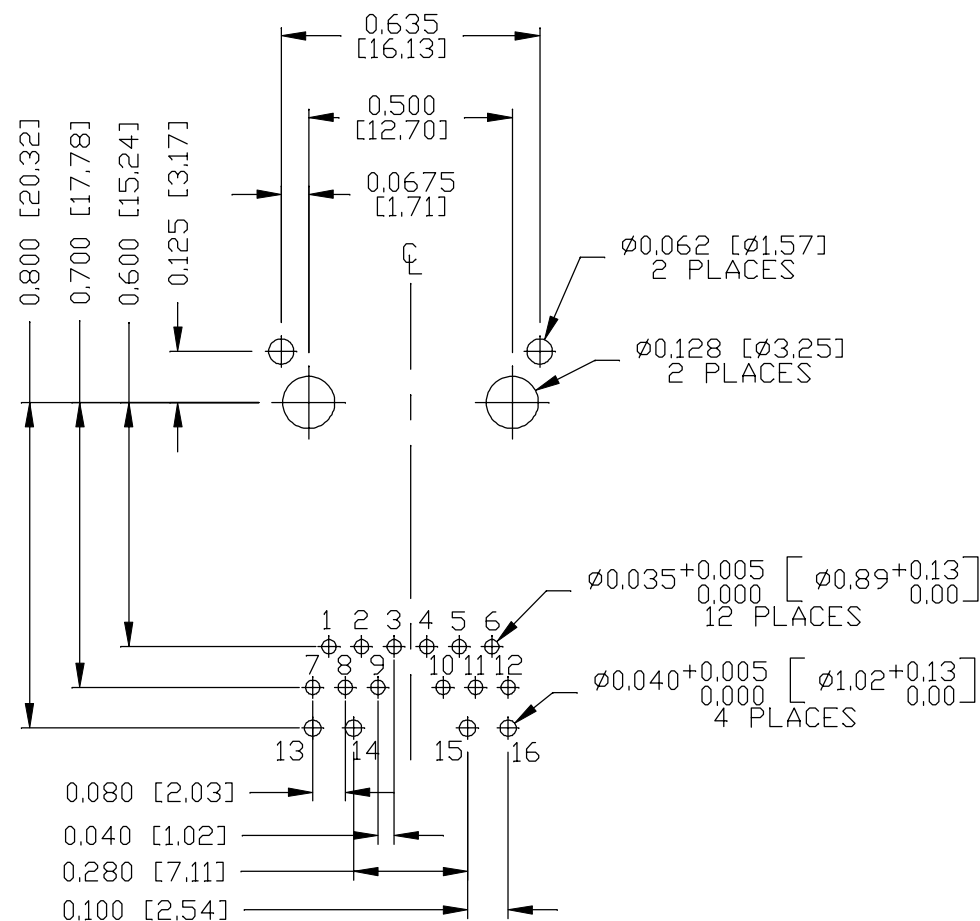
PAGE : 3

**bel** MAGNETIC
SOLUTIONS
a bel group

COMPONENT SIDE VIEW



THE SHADED AREA ON THE CUSTOMER BOARD ARE
RECOMMENDED TO BE CLEAR OFF ANY VIA HOLE OR
COMPONENT PAD.



REV. :	E	PAGE :	4
--------	---	--------	---

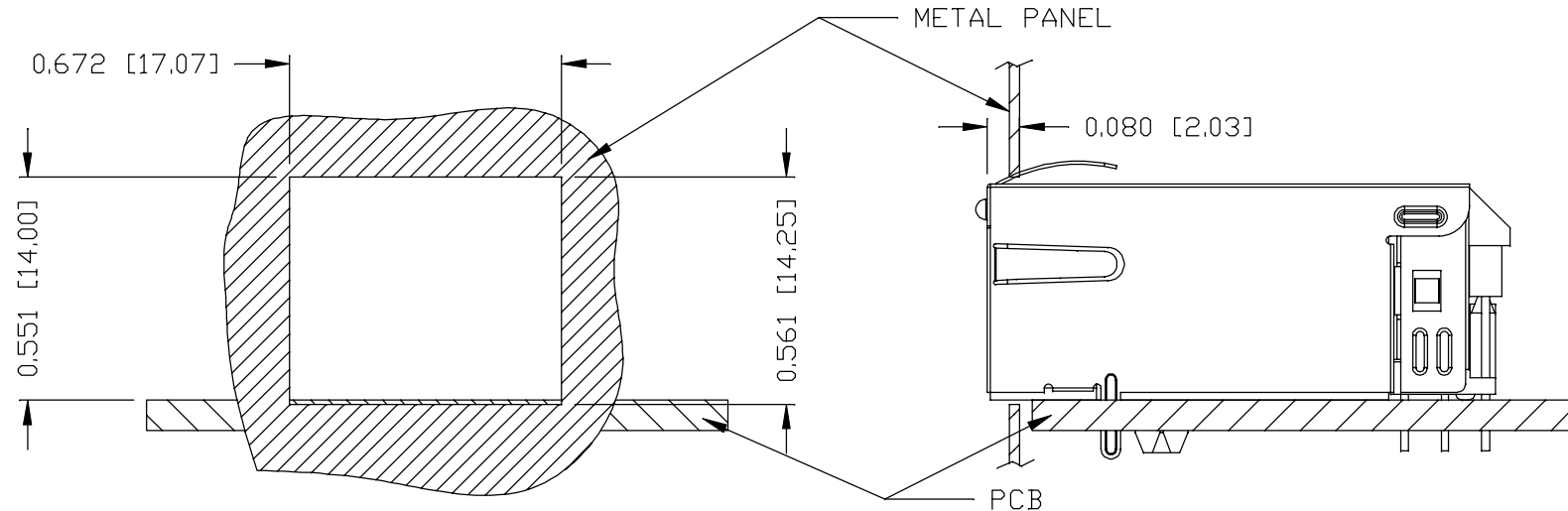


bel **MAGNETIC
SOLUTIONS**

a bel group

THE INFORMATION CONTAINED HEREIN IS CONSIDERED "PROPRIETARY" TO BEL FUSE INC. AND SHALL NOT BE COPIED, REPRODUCED OR DISCLOSED WITHOUT THE WRITTEN APPROVAL OF BEL FUSE INC.

RoHS

SUGGESTED PANEL OPENINGNOTE:

THE DISTANCE OF PANEL INSIDE SURFACE RELATIVE TO FRONT SURFACE OF PART IS ONLY A SUGGESTION. IN CASE THIS DISTANCE IS DIFFERENT, THE REQUIRED PANEL OPENING DIMENSIONS CHANGE ACCORDINGLY.

PACKING INFORMATION

PACKING TRAY : 0200-9999-F6 (TOP)

0200-9999-F7 (BOTTOM)

PACKING QUANTITY : 40 PCS FINISHED GOODS PER TRAY

10 TRAYS (400 PCS FINISHED GOODS) PER CARTON BOX

NOTE : CARDBOARDS ARE PLACED BETWEEN LAYERS OF PACKING TRAY INSIDE CARTON BOX

(INCLUDE THE UPPERMOST AND LOWERMOST TRAY)

REV. : E PAGE : 5

ORIGINATED BY
ANTON LIAO
DATE 2016-08-10

DRAWN BY
JESSE LI
DATE 2016-08-10

TITLE
gigabit MagJack®
(Ext, Temp. Tab Up)
0826-1X1T-32-F
PATENTED

PART NO. / DRAWING NO.
08261X1T32-F

FILE NAME
08261X1T32-F_E.DWG

STANDARD DIM.
TOL. IN INCH

.X

.XX

.XXX

±0.004

[] METRIC DIM.
AS REF.

UNIT : INCH [mm]

SCALE : N/A

SIZE : A4



bel MAGNETIC
SOLUTIONS
a bel group