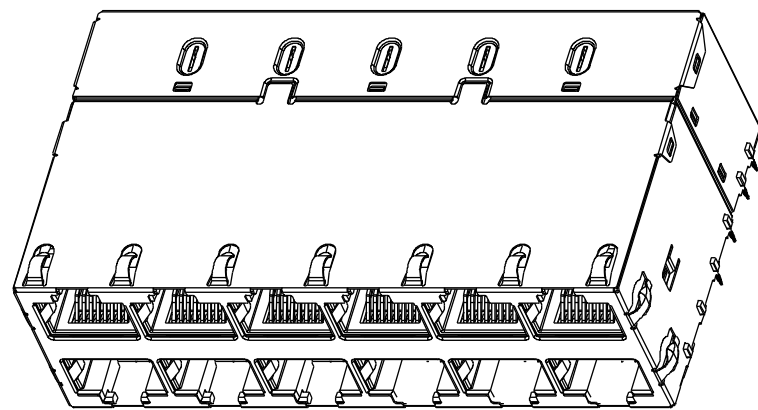


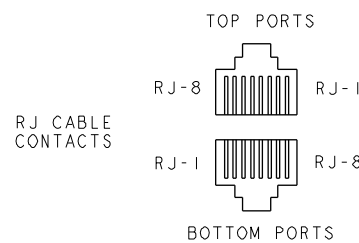
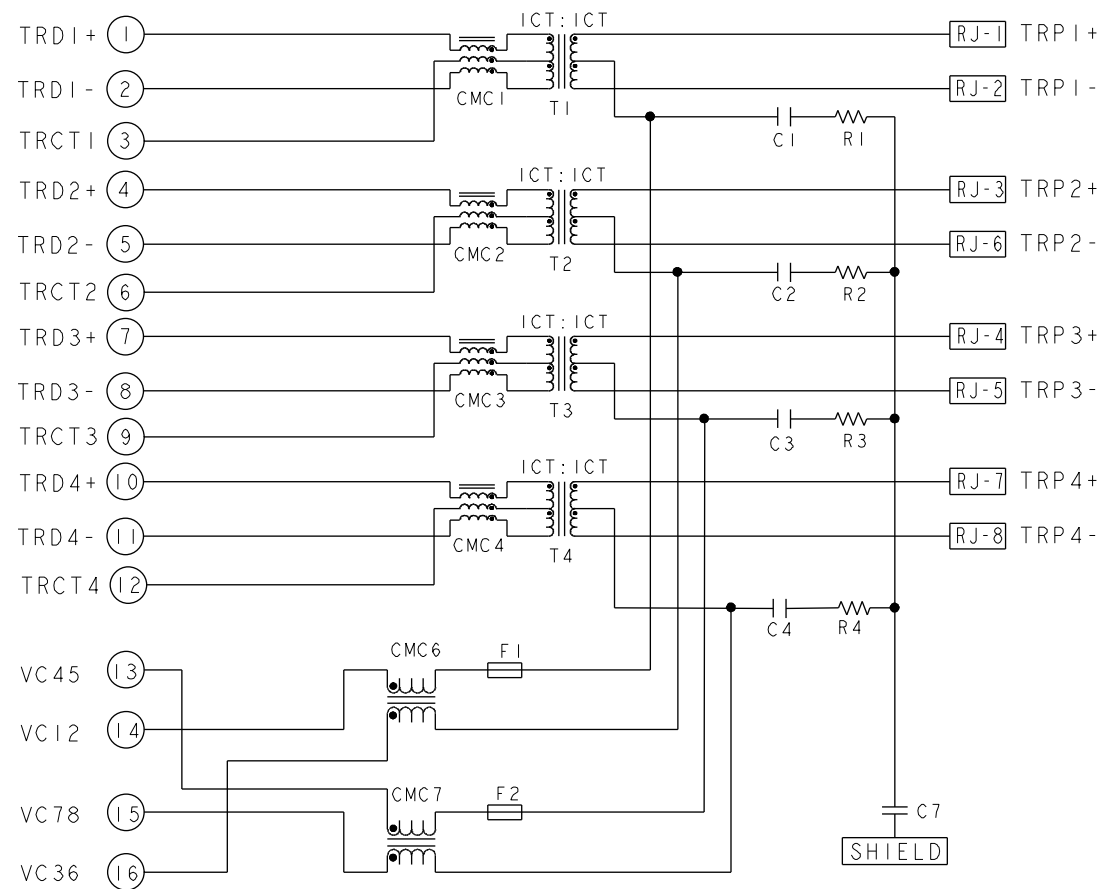
THIS DRAWING AND THE SUBJECT MATTER SHOWN THEREON ARE CONFIDENTIAL AND THE PROPERTY OF BEL/STEWART/TRP CONNECTOR AND SHALL NOT BE REPRODUCED, COPIED, OR USED IN ANY MANNER WITHOUT THE WRITTEN CONSENT OF TRP CONNECTOR.

PRODUCT MAY BE PROTECTED BY ONE OR MORE OF THE FOLLOWING US PATENTS:
 5736910 5939955 6425781 6428361 6554638 6840817 7123117
 7429195 7717749 7808751 6217391 6149050 7924130

REVISIONS				
#	DATE	DESCRIPTION	BY	APPV
3	25APR2021	REV PER EC-2104021	CZ	TY



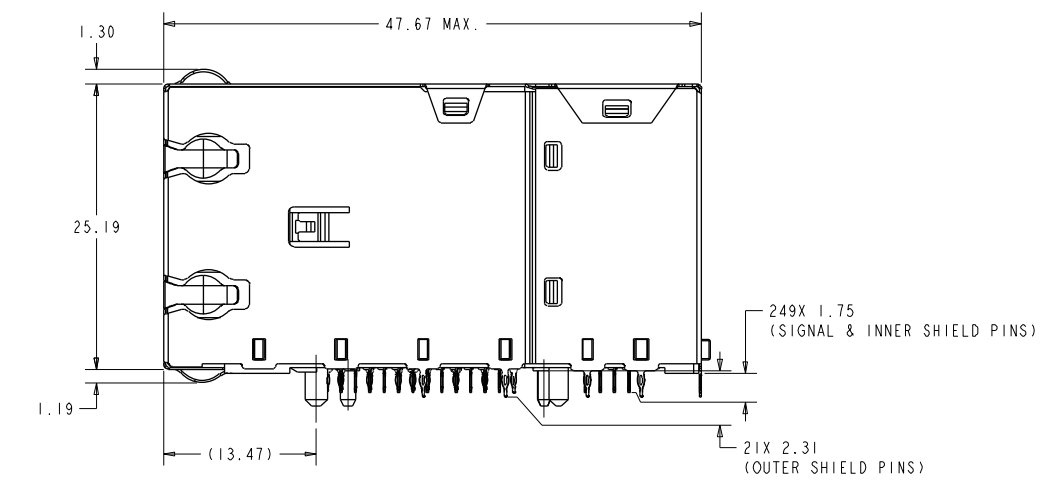
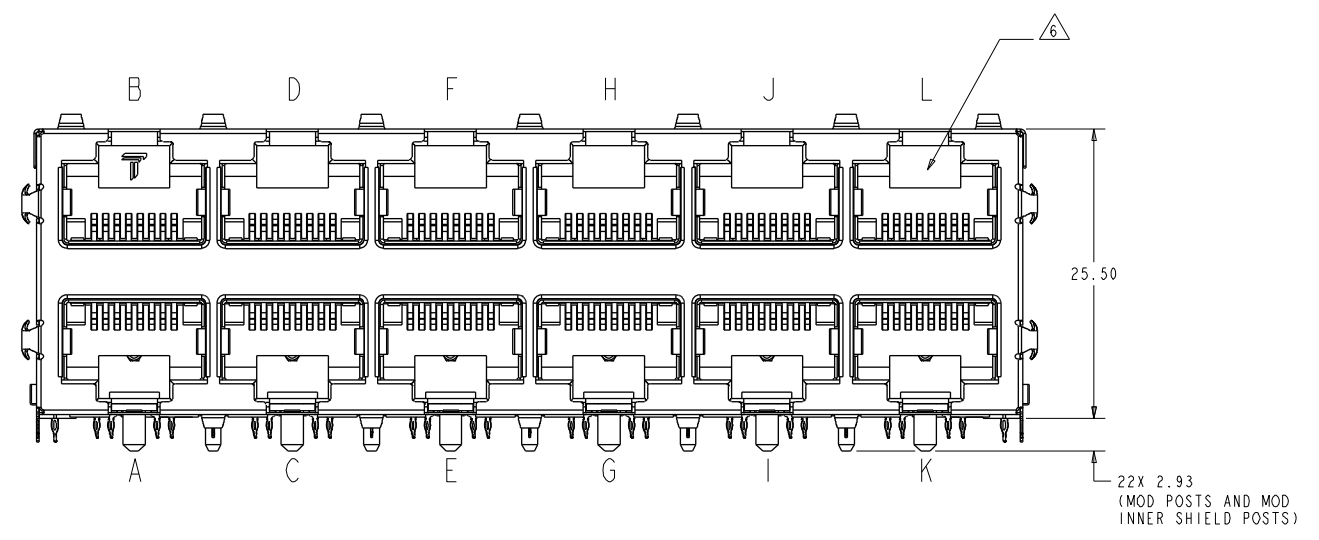
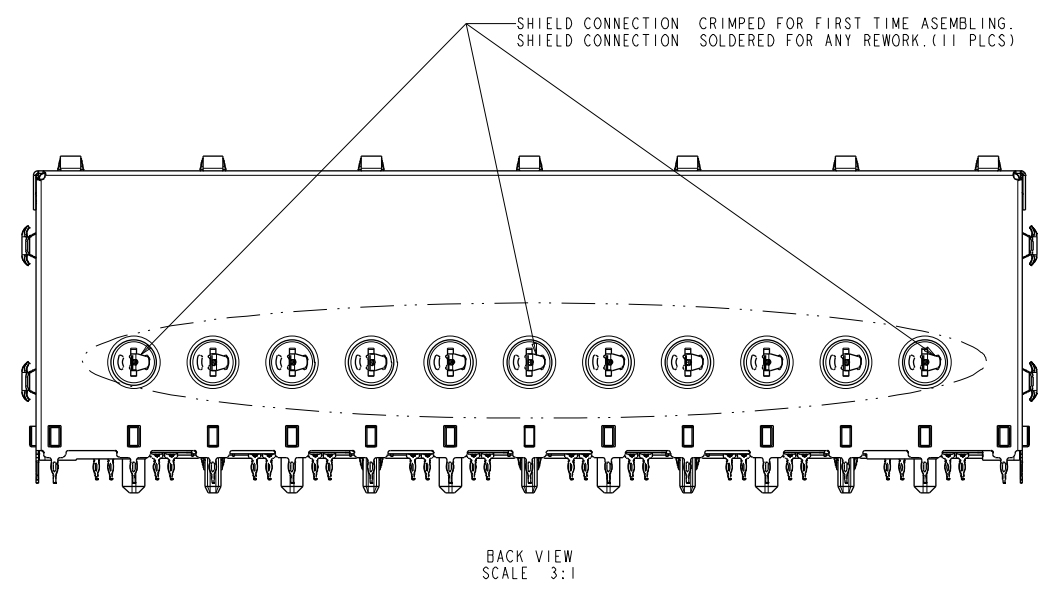
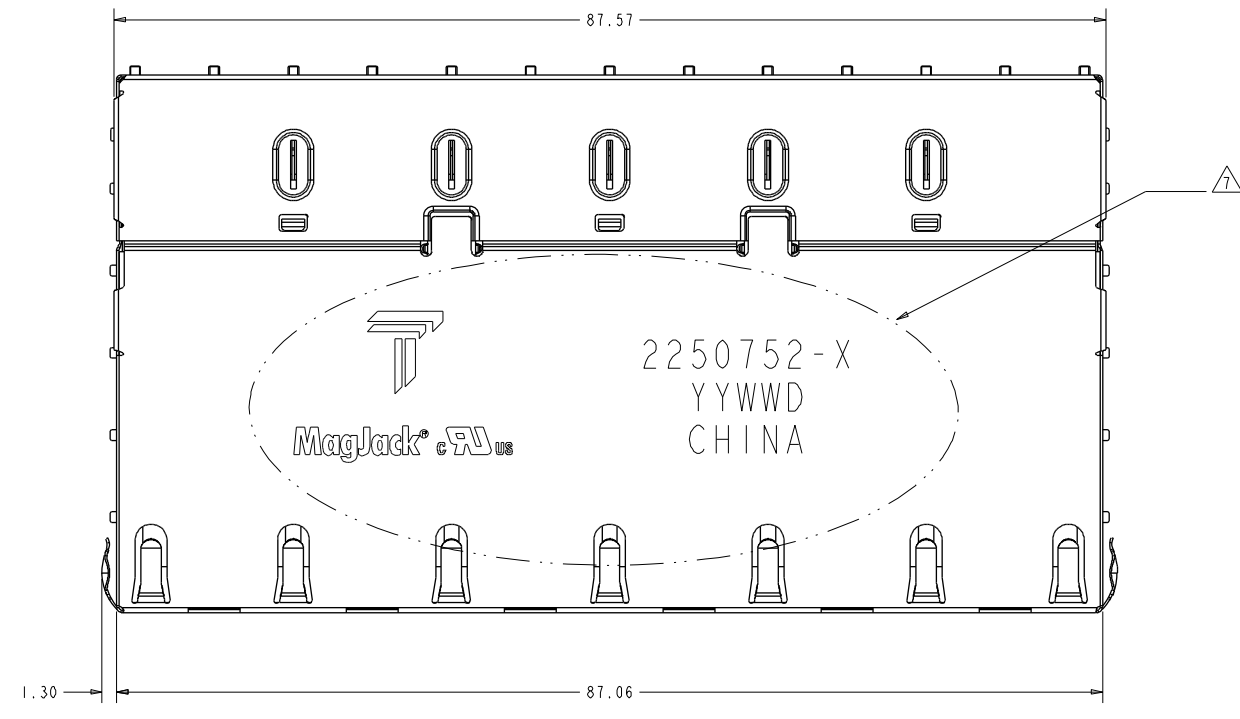
S9HTG10 10G UPOE CIRCUIT (TOP AND BOTTOM PORTS)



C1-C4= 22nF, 100V, CAPACITORS
 C7= 1000pF, 2KV, CAPACITORS
 R1-R4= 75 ohms, 1/16W, RESISTORS
 F1, F2= 63V, 1.5A, FUSES

- 1 MATERIALS
 HOUSING: THERMOPLASTIC, BLACK, FLAMMABILITY RATING UL 94V-0
 SHIELD: COPPER BASE ALLOY, PREPLATED WITH MIN 0.76um SEMI-BRIGHT NICKEL
 CONTACT: PHOSPHOR BRONZE, WITH 1.27um MIN OVERALL NICKEL UNDERPLATE AND SELECTIVE 1.27um MIN GOLD PLATING AT MATING INTERFACE
 COMPLIANT PIN: PHOSPHOR BRONZE, PLATED WITH 2.54um MIN MATTE TIN OVER 1.27um MIN NICKEL.
- 2 MAGNETICS
 - APPLICATION: 1G/10G BASE-T
 - IMPEDANCE: 100 OHMS
 - TURNS RATIO (CHIP:CABLE): 1:1 ALL FOUR PAIRS
 - OPEN CIRCUIT INDUCTANCE (OCL): 120uH MIN @100kHz, 0.1VRMS,
 19mA DC BIAS AT 25°C, ALL FOUR PAIRS
 - ALL FOUR PAIRS BI-DIRECTIONAL
 - PoE CURRENT: 600mADC
 - PERFORMANCE @ 25°C (WHERE f IS FREQUENCY IN MHz):
 (a) RL (MAX)
 1 MHz - 40 MHz -18 dB
 40 MHz - 400 MHz -18 + 10lg (f/40)
 400 MHz - 500MHz -8 + 30lg (f/400)
 (b) IL (MIN)
 1MHz - 400MHz -0.5-1.3*(f-1)/400
 (c) CM TO DM (MAX)
 1 MHz TO 500 MHz -20 dB
 (d) DM TO CM (MAX)
 1 MHz TO 500 MHz -20 dB
 - ISOLATION VOLTAGE: 2250VDC(MAX) FOR 60 SECONDS WITH A RISE TIME OF 500V/SEC, WITH ALL PORTS CONNECTED.
- 3 THE MAGNETIC CIRCUIT ON ALL FOUR CHANNELS IS SYMMETRICAL AND SUPPORTS AUTO-MDIX OPERATION.
- 4. OPERATING TEMPERATURE: 0°C - 70°C.
- 5 DATUM Y AND BASIC DIMENSION ESTABLISHED BY CUSTOMER.
- 6 RJ45 CAVITY CONFORMS TO FCC RULES AND REGULATION PART 68 SUBPART F.
- 7 TRP CONNECTOR LOGO, PART NUMBER, DATE CODE, COUNTRY OF ORIGIN, AGENCY APPROVAL MARKING IN APPROPRIATE LOCATION SHOWN.
 DATE CODE: YYWW WHERE "YY" IS YEAR, "WW" IS WORK WEEK, "D" IS DAY OF WEEK, WITH SUNDAY= 1
- 8 PANEL SEATING LOCATION WITH RESPECT TO HOST PCB EDGE.
- 9 FOR HOLE SIZE AND PLATINGS, SEE SHEET 4.

THIS DRAWING IS A CONTROLLED DOCUMENT. AND COMPLIANT TO ASME Y14.5M		DWN 23-MAR-2021 CHK CLOUD ZENG/ZHENYI LIN APPV RICK LI/BILL LIU MODEL NAME TONY YUAN		2250752-1 PART NUMBER																					
DIMENSIONS: mm		TOLERANCES UNLESS OTHERWISE SPECIFIED:		trp CONNECTOR DONGGUAN CHINA																					
<table border="1"> <tr><td>0 PLC</td><td>±0.25</td></tr> <tr><td>1 PLC</td><td>±0.25</td></tr> <tr><td>2 PLC</td><td>±0.25</td></tr> <tr><td>3 PLC</td><td>±0.25</td></tr> <tr><td>4 PLC</td><td>±0.25</td></tr> <tr><td>ANGLES</td><td>±</td></tr> </table>		0 PLC	±0.25	1 PLC	±0.25	2 PLC	±0.25	3 PLC	±0.25	4 PLC	±0.25	ANGLES	±	<table border="1"> <tr><td>SIZE</td><td>CAGE CODE</td><td>DRAWING NO</td><td>RESTRICTED TO</td></tr> <tr><td>A1</td><td></td><td>C=2250752</td><td>CSI</td></tr> </table>		SIZE	CAGE CODE	DRAWING NO	RESTRICTED TO	A1		C=2250752	CSI	DESC 2X6 S9HTG10 10G UPOE, NO 5th CHANNEL PRESS FIT, W/O LEDS	
0 PLC	±0.25																								
1 PLC	±0.25																								
2 PLC	±0.25																								
3 PLC	±0.25																								
4 PLC	±0.25																								
ANGLES	±																								
SIZE	CAGE CODE	DRAWING NO	RESTRICTED TO																						
A1		C=2250752	CSI																						
PRODUCT SPEC 108-104017		APPLICATION SPEC -		RESTRICTED CUSTOMER																					
		SCALE NTS		SHEET 1 OF 5 REV 3																					



THIS DRAWING IS A CONTROLLED DOCUMENT.
 AND COMPLIANT TO ASME Y14.5M

DWN: CLOUD ZENG 23-MAR-2021
 CHN: RICK LI/BILL LIU 23-MAR-2021
 APJ: TONY YUAN 23-MAR-2021

TRP CONNECTOR
 a bel group
 DONGGUAN CHINA

MODEL NAME: MAG JACK
 STACK 4PPOE

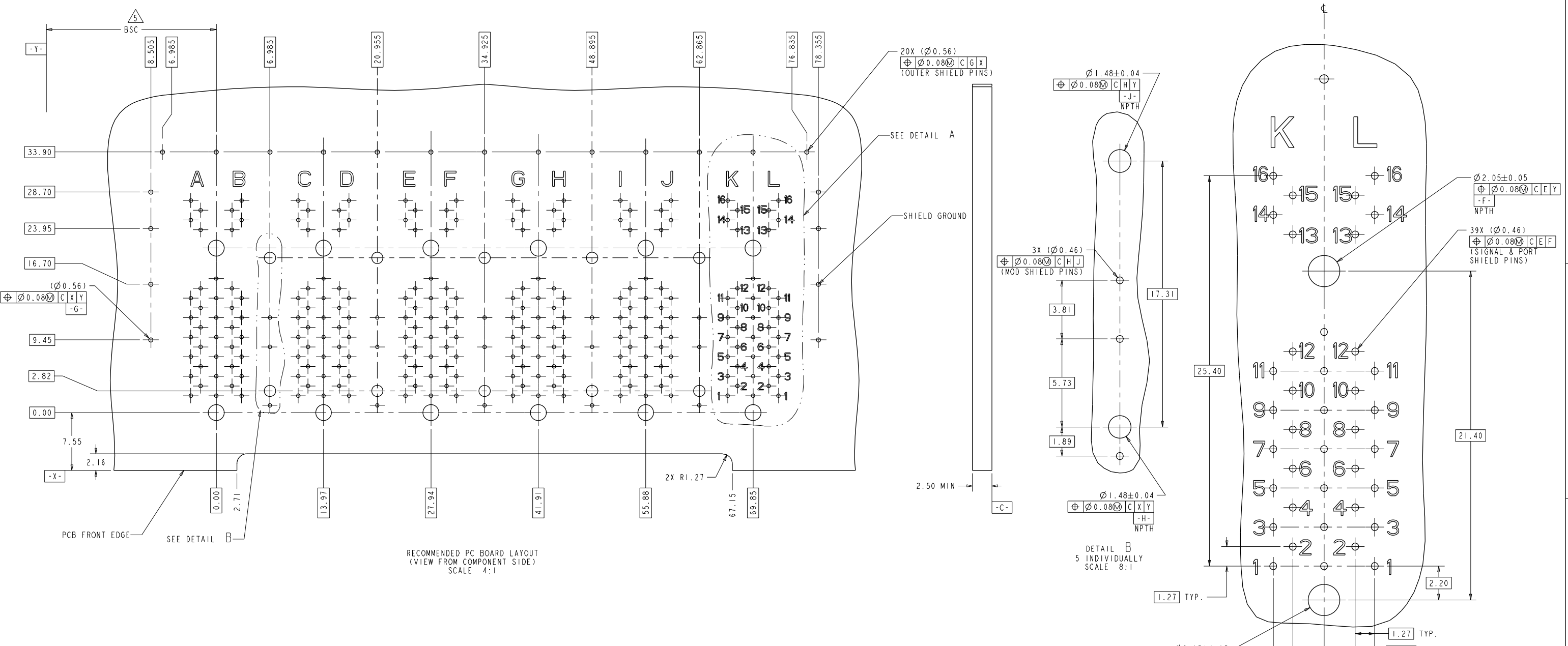
DESC: 2X6 S9HTG10 10G UPoE, NO 5th CHANNEL
 PRESS FIT, W/O LEDS

PRODUCT SPEC: 108-104017
 APPLICATION SPEC: -

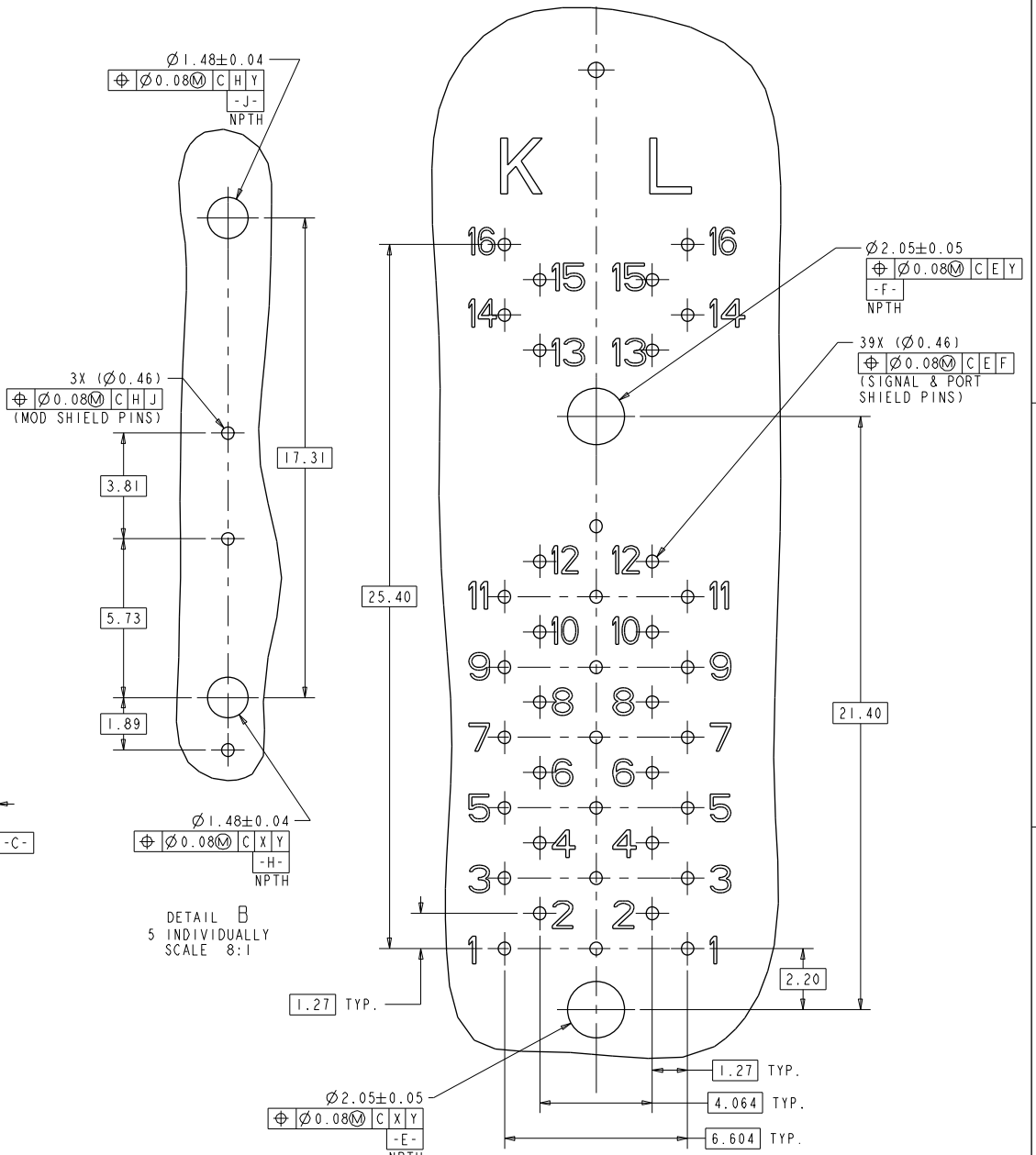
SIZE: A1
 CAGE CODE: -
 DRAWING NO: 2250752
 RESTRICTED TO: CSI

RESTRICTED CUSTOMER

SCALE: NTS
 SHEET: 2 OF 5
 REV: 3

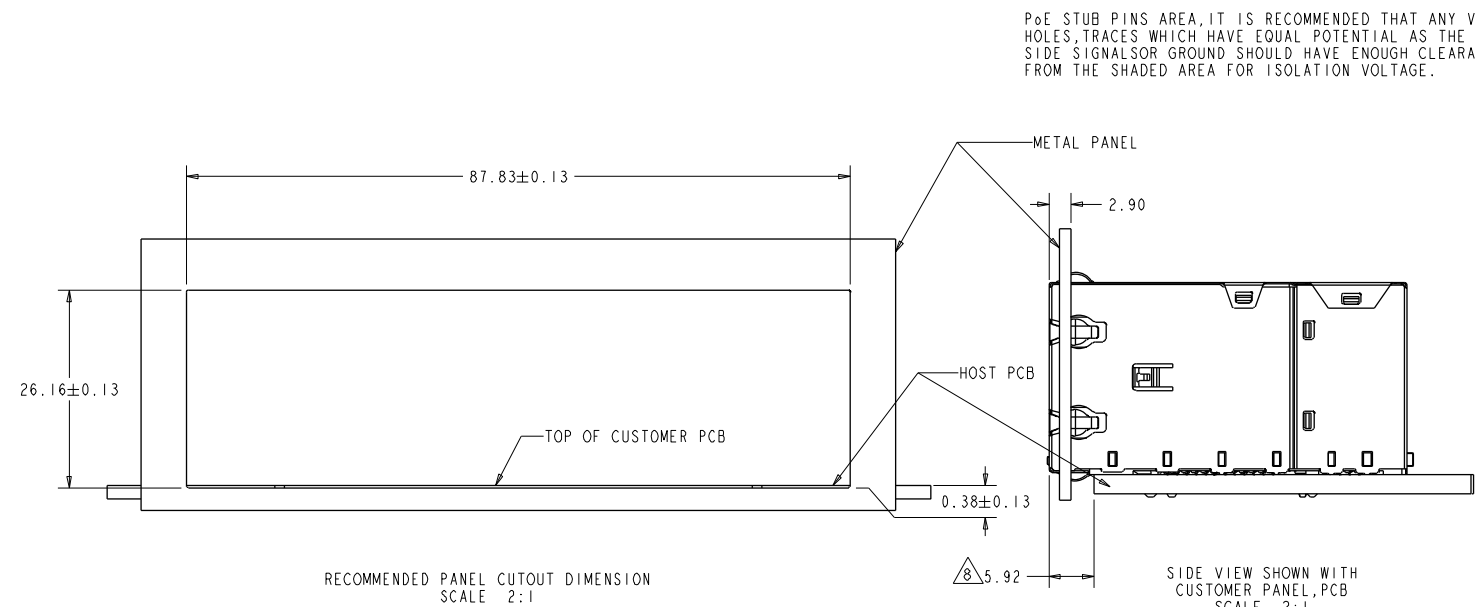


RECOMMENDED PC BOARD LAYOUT
 (VIEW FROM COMPONENT SIDE)
 SCALE 4:1

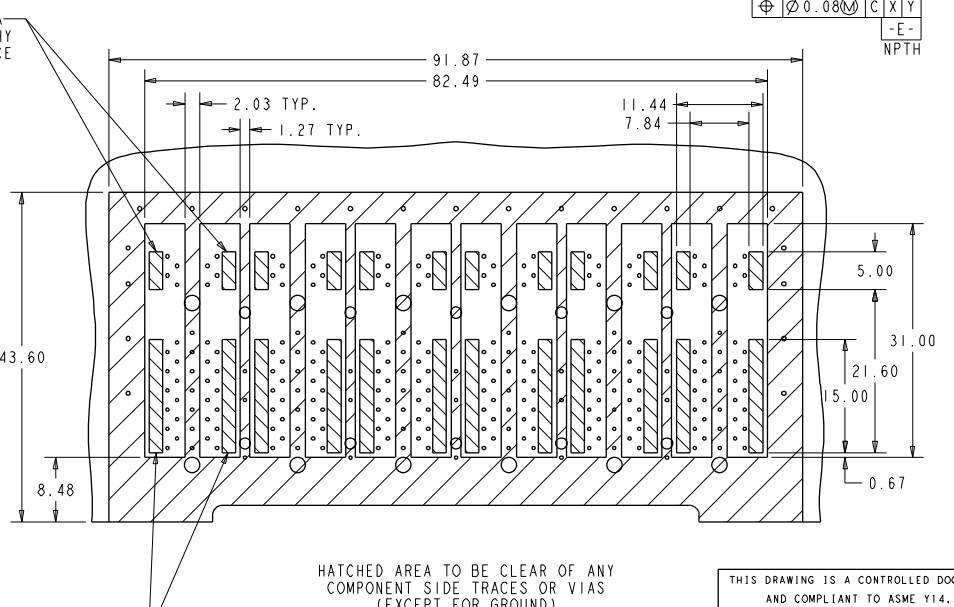


DETAIL B
 5 INDIVIDUALLY
 SCALE 8:1

DETAIL A
 6 INDIVIDUALLY
 SCALE 8:1



RECOMMENDED PANEL CUTOUT DIMENSION
 SCALE 2:1

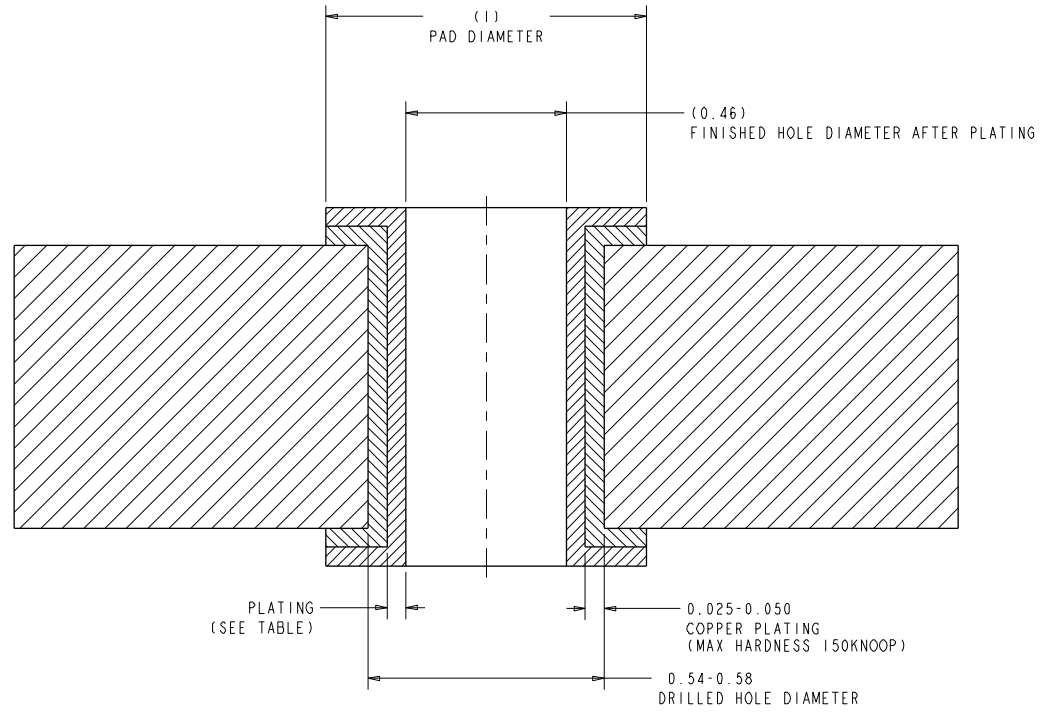


SIDE VIEW SHOWN WITH
 CUSTOMER PANEL, PCB
 SCALE 2:1

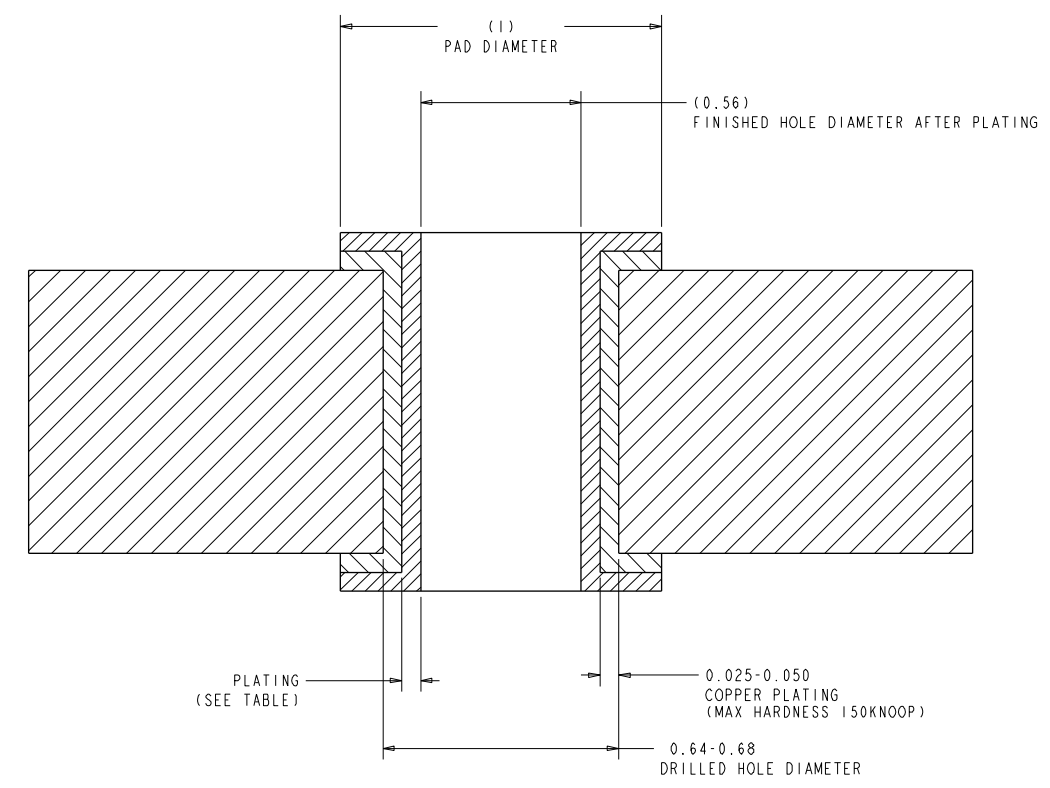
HATCHED AREA TO BE CLEAR OF ANY
 COMPONENT SIDE TRACES OR VIAS
 (EXCEPT FOR GROUND)
 SCALE 2:1

PHY SIDE STUB PINS AREA, IT IS RECOMMENDED THAT ANY VIA HOLES, TRACES WHICH HAVE EQUAL POTENTIAL AS THE CABLE SIDE SIGNAL OR PoE SIGNAL SHOULD HAVE ENOUGH CLEARANCE FROM THE SHADED AREA FOR ISOLATION VOLTAGE.

THIS DRAWING IS A CONTROLLED DOCUMENT, AND COMPLIANT TO ASME Y14.5M		DWN: 23-MAR-2021 CLOUD ZENG/JERRY LIN CHK: 23-MAR-2021 RICK LI/BILL LIU APD: 23-MAR-2021 TONY YUAN		DONGGUAN CHINA	
DIMENSIONS: mm		TOLERANCES UNLESS OTHERWISE SPECIFIED:		MODEL NAME: MAG JACK DESC: 2X6 S9HTG10 10G UPoE, NO 5th CHANNEL PRESS FIT, W/O LEDS	
0 PLC ±0.25 1 PLC ±0.25 2 PLC ±0.25 3 PLC ±0.25 4 PLC ±0.25 ANGLES ±		PRODUCT SPEC: 108-104017 APPLICATION SPEC:		SIZE: A1 CAGE CODE: C=2250752 DRAWING NO: 2250752 RESTRICTED TO: CS1	
		RESTRICTED CUSTOMER		SCALE: NTS SHEET 3 OF 5 REV 3	



RECOMMENDED HOLE DIMENSIONS FOR SIGNAL CONTACTS



RECOMMENDED HOLE DIMENSIONS FOR SHIELD CONTACTS


THICKNESS	PLATING
0.004-0.010	HOT AIR SOLDER LEVELING (HASL) TIN-LEAD (Sn Pb)
0.0005-0.001	IMMERSION TIN (Sn)
0.0002-0.0005	ORGANIC SOLDERABILITY PRESERVATIVE (OSP)
0.0001-0.0005 Au, 0.004-0.0076 Ni	IMMERSION GOLD (Au) OVER NICKEL (Ni) (ENIG)
0.010-0.025	TIN LEAD PLATING (Sn Pb)
0.0001-0.00015	IMMERSION SILVER (Ag)

THIS DRAWING IS A CONTROLLED DOCUMENT AND COMPLIANT TO ASME Y14.5M

DW: CLOUD ZENG 23-MAR-2021	CHK: RICK LI/BILL LIU 23-MAR-2021	APJ: TONY YUAN 23-MAR-2021	MODEL NAME: MAG JACK STACK 4PPOE	DESC: 2X6 S9HTG10 10G UPoE, NO 5th CHANNEL PRESS FIT, W/O LEDS
DIMENSIONS: mm	TOLERANCES UNLESS OTHERWISE SPECIFIED:	0 PLC ±0.25	1 PLC ±0.25	2 PLC ±0.25
3 PLC ±0.25	4 PLC ±0.25	ANGLES ±°	PRODUCT SPEC: 108-104017	APPLICATION SPEC: -
SIZE: A1		CAGE CODE: -	DRAWING NO: ©=2250752	RESTRICTED TO: CSI
RESTRICTED CUSTOMER			SCALE: NTS	SHEET 4 OF 5 REV 3

trp CONNECTOR DONGGUAN CHINA

2250752					STOCK DISPOSITION			
2X6 S9HTG10 10G UPoE, NO 5th CHANNEL, PRESS FIT, W/O LEDS					A: CONTINUE AS IS		D: USE OLD FIRST	
REVISION HISTORY					B: REWORK		E: PARTS TO CONFORM	
					C: SCRAP		F: OTHER	
DATE	REV	CHANGES	REASON	APPROVAL	INVENTORY (A.B.C.D.E.F)	WORK IN PROCESS (A.B.C.D)	SUPPLIER ORDERS (A.E.F.)	OPEN CUST ORDERS (A.E.F)
23MAR2021	1	INITIAL RELEASE	INITIAL RELEASE	TY	-	-	-	-
15APR2021	2	CHANGE CIRCUIT TO S9HTG10	CUSTOMER REQUEST	TY	-	-	-	-
25APR2021	3	SHEET 2 TOP RIGHT ZONE: ADD BACK VIEW AND A NEW NOTE.	CUSTOMER REQUEST (PCN NO: PC-20210321)	TY	-	-	-	-

THIS DRAWING IS A CONTROLLED DOCUMENT. AND COMPLIANT TO ASME Y14.5M		DWN 23-MAR-2021 CHK CLOUD ZENG/ZHENYI LIN 23-MAR-2021 RICK LI/BILL LIU 23-MAR-2021 APJW TONY YUAN 23-MAR-2021		 trp CONNECTOR DONGGUAN CHINA	
DIMENSIONS: mm		TOLERANCES UNLESS OTHERWISE SPECIFIED: 0 PLC ±0.25 1 PLC ±0.25 2 PLC ±0.25 3 PLC ±0.25 4 PLC ±0.25 ANGLES ±°		MODEL NAME MAG JACK STACK 4PPOE	
PRODUCT SPEC 108-104017		APPLICATION SPEC -		DESC 2X6 S9HTG10 10G UPoE, NO 5th CHANNEL PRESS FIT, W/O LEDS SIZE CAGE CODE DRAWING NO A1 ©=2250752 RESTRICTED TO RESTRICTED CUSTOMER	
				SCALE NTS SHEET 5 OF 5 REV 3	