

PART NUMBER
142-0403-051

REV	ECO	DATE
1	INITIAL RELEASE	08/16/2021
2	ADD 2 DIMENSIONS	10/08/2023

1. MATERIAL AND FINISH:

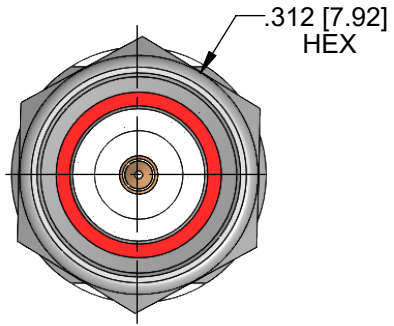
- 1.1 BODY: BRASS, NICKEL PLATE
- 1.2 CONTACT: BERYLLIUM COPPER, GOLD PLATE
- 1.3 CABLE CONTACT: BRASS, GOLD PLATE
- 1.4 INSULATOR: PTFE
- 1.5 GASKETS: SILICONE RUBBER
- 1.6 SLEEVE: STAINLESS STEEL, PASSIVATE

2. ELECTRICAL SPECIFICATIONS:

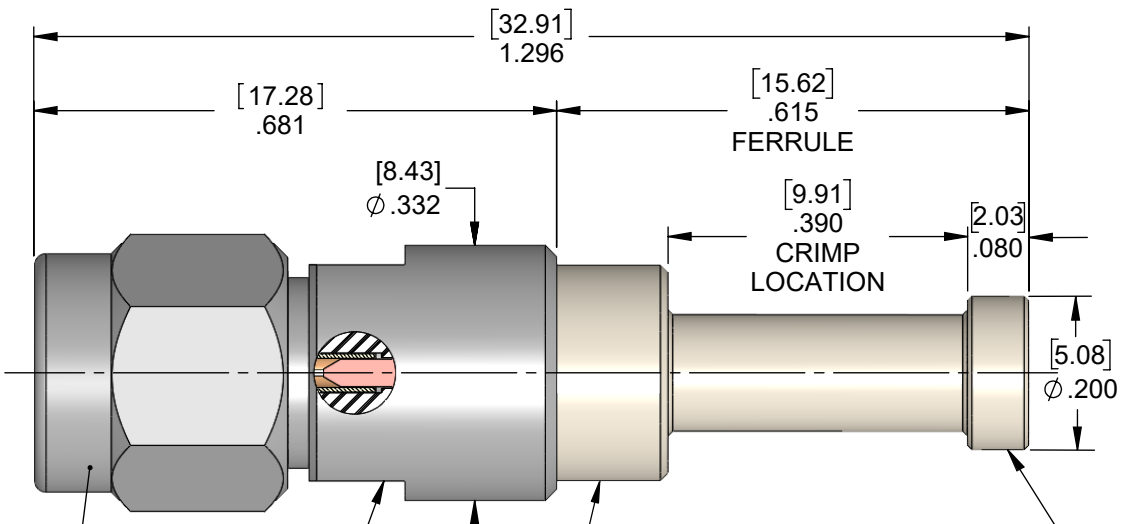
- 2.1 IMPEDANCE: 50 OHMS NOMINAL
- 2.2 FREQUENCY RANGE: DC-18 GHZ
- 2.3 VOLTAGE RATING: 335 VRMS
- 2.4 DIELECTRIC WITHSTANDING VOLTAGE: 1,500 VRMS
- 2.5 INSULATION RESISTANCE: 5,000 MEGOHMS

3. MECHANICAL SPECIFICATIONS:

- 3.1 CONNECTOR DURABILITY: 250 CYCLES MIN.
- 3.2 CABLE: RG316 OR EQUIVALENT
- 3.3 CONNECTOR MEETS: MIL-STD-348 FIG. 310-1, MIL-PRF-39012
- 3.4 FERRULE CRIMP TOOL: .128 HEX (.375 MAX WIDE)



CONNECTOR WATERPROOF TO 10M FOR 4 HOURS IN AN UNMATED CONDITION PER IP68

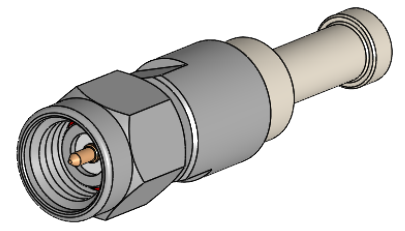


.281 [7.14] ACROSS 2 FLATS

FRONT END OF CRIMP FERRULE TO BE SEALED TO BODY WITH AN O-RING DURING FERRULE INSTALLATION OF THE CABLE ASSEMBLY PROCESS

BACK END OF CRIMP FERRULE TO BE SEALED TO CABLE WITH EPOXY (RECOMMENDED SUPPLIER AND APPLICATION INFORMATION PER ES146) OR SILICONE DURING THE CABLE ASSEMBLY PROCESS

NOTES: 1. ADHESIVE LINED HEAT SHRINK TUBING TO BE APPLIED OVER FERRULE CRIMP SECTION OF CABLE ASSEMBLY (INCLUDED).



<p>This PROPRIETARY Document is property of Cinch Connectivity Solutions. It is confidential in nature, non-transferable, and leased with the clear understanding that it is not traced or copied without permission and is returnable upon demand.</p> <p>INTERPRET DRAWING IN ACCORDANCE WITH ASME Y14.5-2009.</p>	Model No:	142-0403-051/060	JOHNSON		
	RoHS <input checked="" type="checkbox"/> (EU)/2015/863 COMPLIANT	Cage Code	Title: SMA CRIMP PLUG RG174/RG316/LMR100, IP68		
	UNLESS OTHERWISE SPECIFIED UNITS: INCH	3RD ANGLE PROJECTION	Drawing No.	142-0403-051/060	
	.XXX ± .008 .XXXX ± .004 ANGLES ± 5°	Drawn by: TOMMY REN Date: 08/16/2021	Size: B	DO NOT SCALE DRAWING	Workmanship Std: NONE Sheet: 1 OF 1