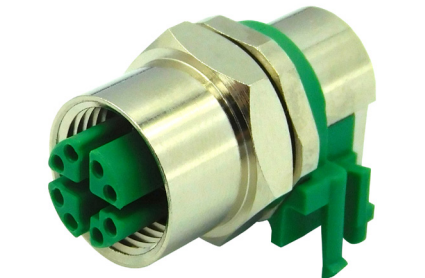


M12 X-Code PCB Mount Connectors

M12 X-Code connectors are a growing standard for industrial automation, outdoor applications, agriculture and more. X-Code connectors feature 8 positions and are often used for industrial Ethernet connectivity and transmission. The M12 X-Code PCB mount connectors have the transmission reliability of Stewart Connector's RJ45 connectors combined with the robust features needed in industrial environments where M12 connectors are common.



Features & Benefits

- M12 X-Code 8-pin plugs can run 10 Gbps data transmissions
- X-coding within the M12 series prevents mismatching with other M12 coding/keying options
- IP67 rated
- Shielded

Applications

- Industrial automation
- Sensors and power applications
- Alternative energy solutions
- Communications
- Robotics

Part Numbers

Part Number	Gender	Number of contacts	Orientation	Type
SS-12400-003	Female	8	Vertical	Rear mount PCB receptacle
SS-12400-004	Female	8	Right Angle	Rear mount PCB receptacle