

THE INFORMATION CONTAINED HEREIN IS CONSIDERED
"PROPRIETARY" TO BEL FUSE INC. AND SHALL NOT BE
COPIED, REPRODUCED OR DISCLOSED WITHOUT THE
WRITTEN APPROVAL OF BEL FUSE INC.

RoHS



LED1 POLARITY			LED2 POLARITY		
PIN 13	PIN 14	COLOR	PIN 15	PIN 16	COLOR
-	+	GREEN	-	+	YELLOW

ELECTRICAL CHARACTERISTICS @ 25°C

TRANSFORMER

TP1	1CT : 1CT $\pm 2\%$
TP2	1CT : 1CT $\pm 2\%$
TP3	1CT : 1CT $\pm 2\%$
TP4	1CT : 1CT $\pm 2\%$
OCL @ 100kHz/100mVRMS	(0-70 Deg. C)
8mA DC BIAS	350 μ H MIN.
INS. LOSS	
0.1MHz TO 1MHz	-1.1 dB MAX
1MHz TO 65MHz	-0.5 dB MAX
65MHz TO 100MHz	-0.8 dB MAX
100MHz TO 125MHz	-1.2 dB MAX
RET. LOSS (MIN) @ 100 OHMS $\pm 15\%$	
0.5MHz-40MHz	-18 dB
40MHz-100MHz	-12+20LOG(f/80MHz) dB
CM TO CM REJ	
100kHz - 100MHz	-30 dB MIN
CM TO DM REJ	
100kHz - 100MHz	-35 dB MIN
HIPOT (Isolation Voltage):	1500 Vrms / 2250 VDC

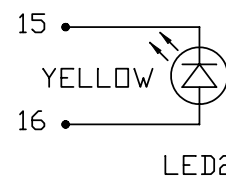
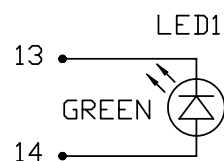
100% OF PRODUCTION TESTED TO COMPLY
WITH IEEE 802.3 ISOLATION REQUIREMENTS

LED 1

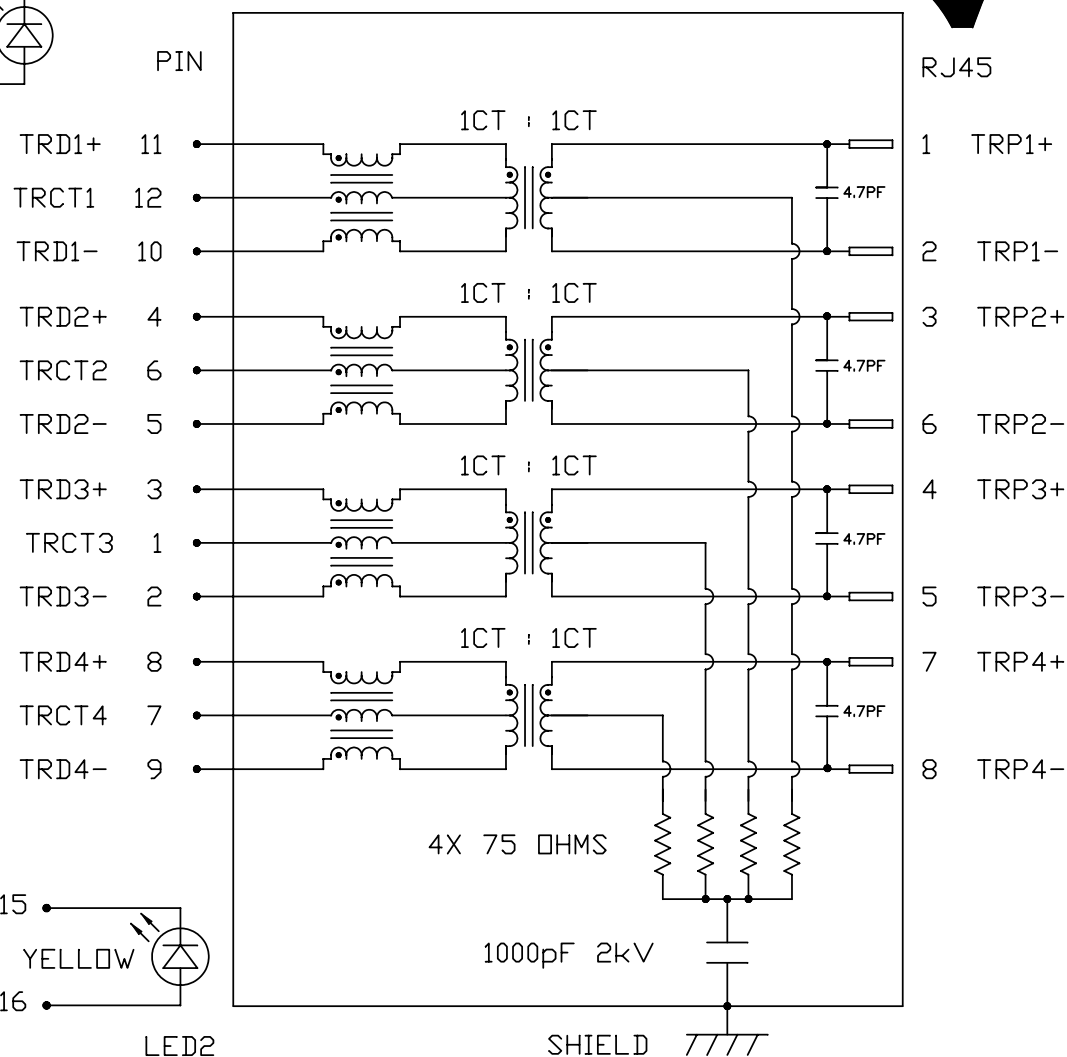
VF (FORWARD VOLTAGE)	IF=20mA	GREEN	2.2V TYP.
λ D (DOMINANT WAVELENGTH)	IF=20mA	GREEN	565nm TYP.

LED 2

VF (FORWARD VOLTAGE)	IF=20mA	YELLOW	2.1V TYP.
λ D (DOMINANT WAVELENGTH)	IF=20mA	YELLOW	590nm TYP.



SCHEMATIC



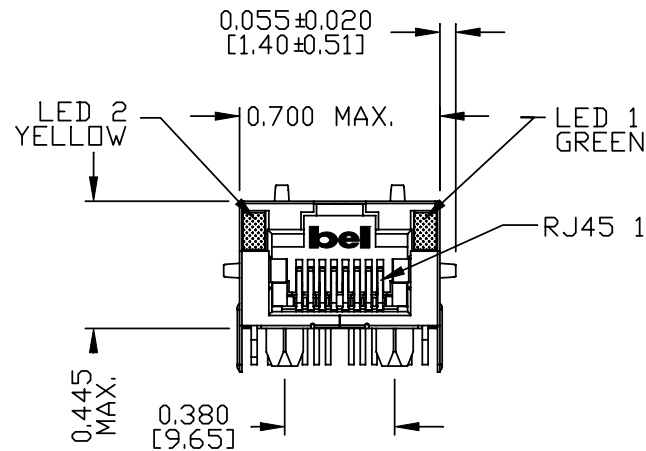
ORIGINATED BY	DATE	TITLE	PART NO. / DRAWING NO.	STANDARD DIM.	[] METRIC DIM. AS REFERENCE
CHOW WANCHUNG	2012-07-19	gigabit MagJack® (Ultra Low Profile) PATENTED	L829-1D1T-43	TOL. IN INCH	UNIT : INCH [mm] REV. : B
DRAWN BY	DATE		FILE NAME	.X	SCALE : N/A SIZE : A4
TAN QIGUANG	2012-07-19		L829-1D1T-43_B.DWG	.XX .XXX	PAGE : 2



THE INFORMATION CONTAINED HEREIN IS CONSIDERED
"PROPRIETARY" TO BEL FUSE INC. AND SHALL NOT BE
COPIED, REPRODUCED OR DISCLOSED WITHOUT THE
WRITTEN APPROVAL OF BEL FUSE INC.

MECHANICAL SPECIFICATION

RoHS



NOTES:

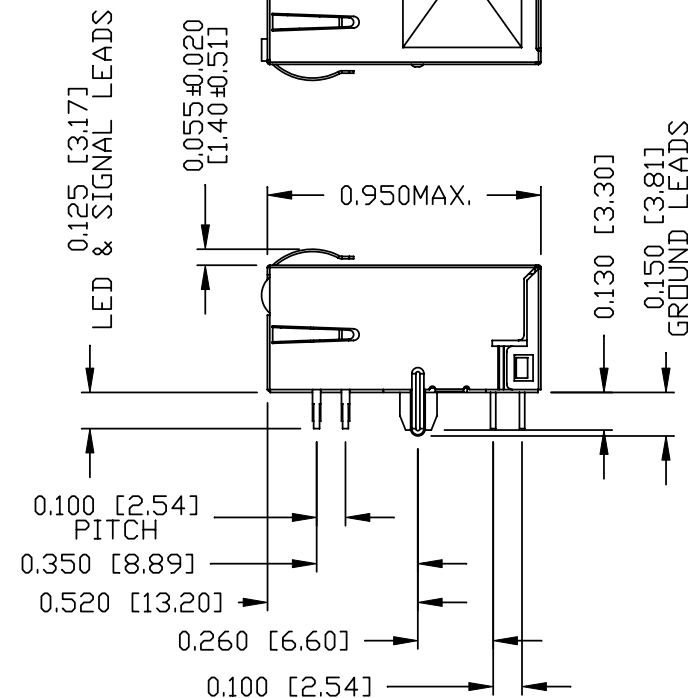
PLASTIC HOUSING: THERMOPLASTIC PA
FLAMMABILITY RATING UL 94V-0

CONTACTS: 30 MICRO-INCH HARD GOLD PLATING
OR EQUIVALENT.

OUTPUT PINS: TIN-COATED COPPER WIRE, DIA 0.018 INCH.

METAL SHIELD: NICKEL PLATED ON COPPER ALLOY.
(ALL GROUND LEADS ARE SOLDER DIPPED)

1. MARK PART WITH MFG. LOGO, MFG. NAME, PART NUMBER,
DATE CODE AND PATENTED.



1. THE PRODUCT IS RoHS COMPLIANT.

2. THE PRODUCT IS PATENT PRODUCT. THE PATENT NUMBER ARE
U.S. PAT. 5,736,910 AND U.S. PAT. 6,840,817 AND U.S. PAT. 7,123,117.

ORIGINATED BY	DATE	TITLE	PART NO. / DRAWING NO.	STANDARD DIM.	[] METRIC DIM. AS REFERENCE	
ANTON LIAO	2012-07-19	gigabit MagJack® (Ultra Low Profile) PATENTED	L829-1D1T-43	TOL. IN INCH	UNIT : INCH [mm]	REV. : B
DRAWN BY	DATE		FILE NAME	.X	SCALE : N/A	SIZE : A4
HE ZHEN	2012-07-19		L829-1D1T-43_B.DWG	.XX .XXX	⊕	PAGE : 3

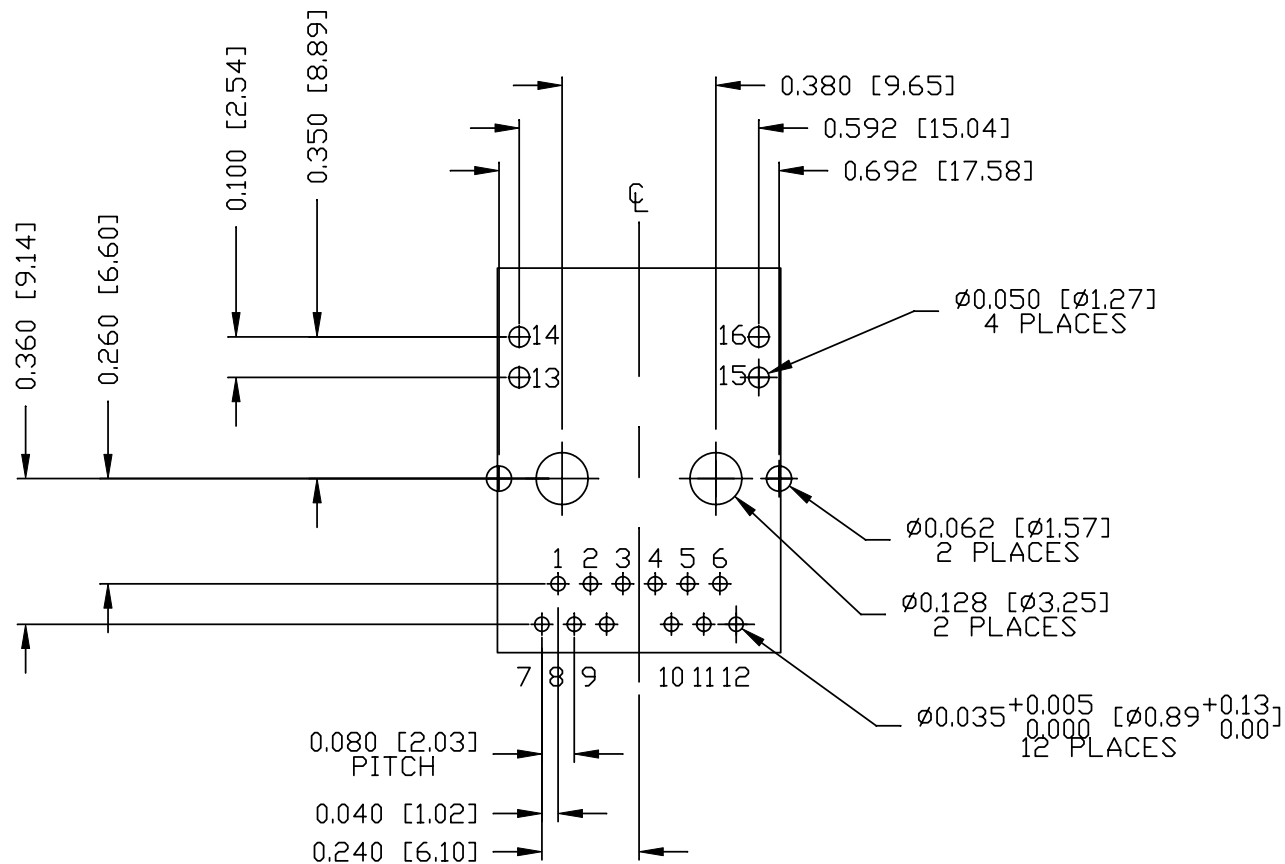
bel
COMPONENTS FOR A
CONNECTED
PLANET



RoHS



RECOMMENDED PCB FOOTPRINT

COMPONENT SIDE VIEW



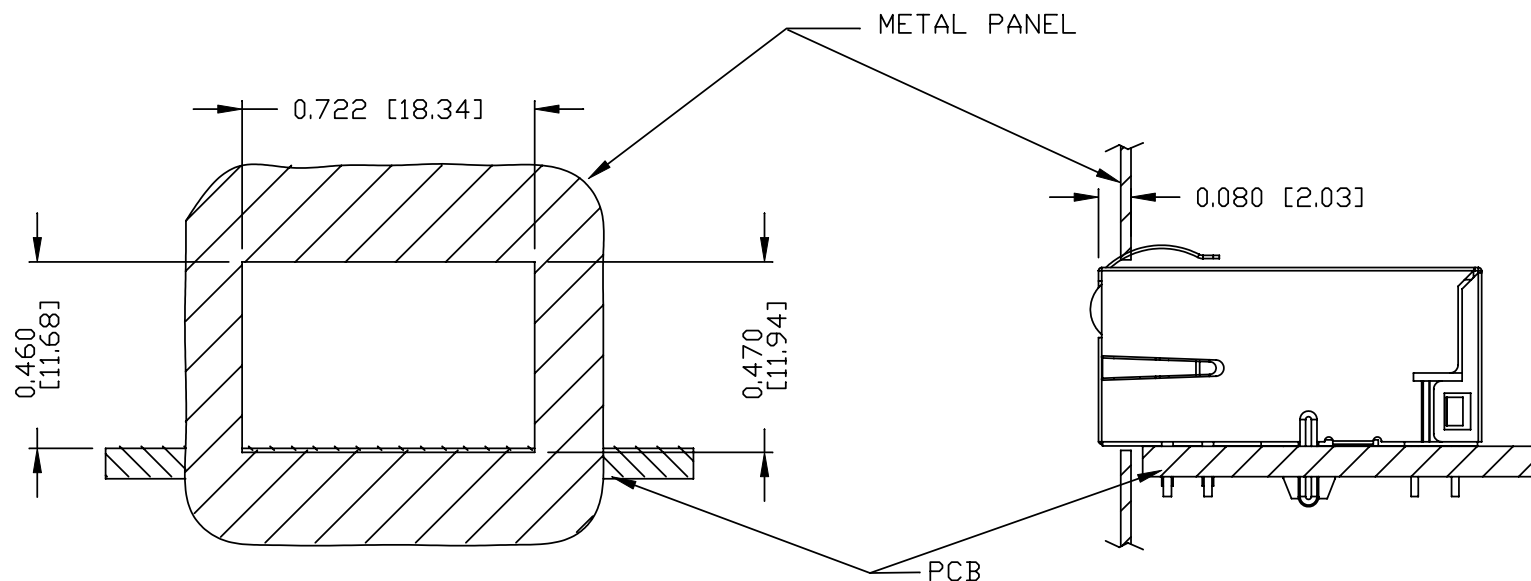
ORIGINATED BY	DATE	TITLE gigabit MagJack® (Ultra Low Profile) PATENTED	PART NO. / DRAWING NO.	STANDARD DIM.		[] METRIC DIM. AS REFERENCE		 bel <small>COMPONENTS FOR A CONNECTED PLANET™</small>
ANTON LIAO	2012-07-19		L829-1D1T-43	TOL. IN INCH		UNIT : INCH [mm]	REV. : B	
DRAWN BY	DATE		FILE NAME	.X		SCALE : N/A	SIZE : A4	
HE ZHEN	2012-07-19		L829-1D1T-43_B.DWG	.XX			PAGE : 4	
			.XXX	±0.004				

THE INFORMATION CONTAINED HEREIN IS CONSIDERED
"PROPRIETARY" TO BEL FUSE INC. AND SHALL NOT BE
COPIED, REPRODUCED OR DISCLOSED WITHOUT THE
WRITTEN APPROVAL OF BEL FUSE INC.

RoHS



SUGGESTED PANEL OPENING



NOTE:

THE DISTANCE OF PANEL INSIDE SURFACE RELATIVE TO FRONT SURFACE OF PART IS ONLY A SUGGESTION.
IN CASE THIS DISTANCE IS DIFFERENT, THE REQUIRED PANEL OPENING DIMENSIONS CHANGE ACCORDINGLY.

TRAY PACKING INFORMATION

PACKING TRAY : 0200-9999-E4 (TOP)

0200-9999-E5 (BOTTOM)

PACKING QUANTITY : 60 PCS FINISHED GOODS PER TRAY

11 TRAYS (660 PCS FINISHED GOODS) PER CARTON BOX

NOTE : CARDBOARDS ARE PLACED BETWEEN LAYERS OF PACKING TRAY INSIDE CARTON BOX
(INCLUDE THE UPPERMOST AND LOWERMOST TRAY)

ORIGINATED BY	DATE	TITLE	PART NO. / DRAWING NO.	STANDARD DIM.		[] METRIC DIM. AS REFERENCE	
				TOL. IN INCH		UNIT : INCH [mm]	REV. : B
ANTON LIAO	2012-07-19	gigabit MagJack® (Ultra Low Profile) PATENTED	L829-1D1T-43	.X		SCALE : N/A	SIZE : A4
DRAWN BY	DATE			.XX			PAGE : 5
HE ZHEN	2012-07-19			.XXX	±0.004		

