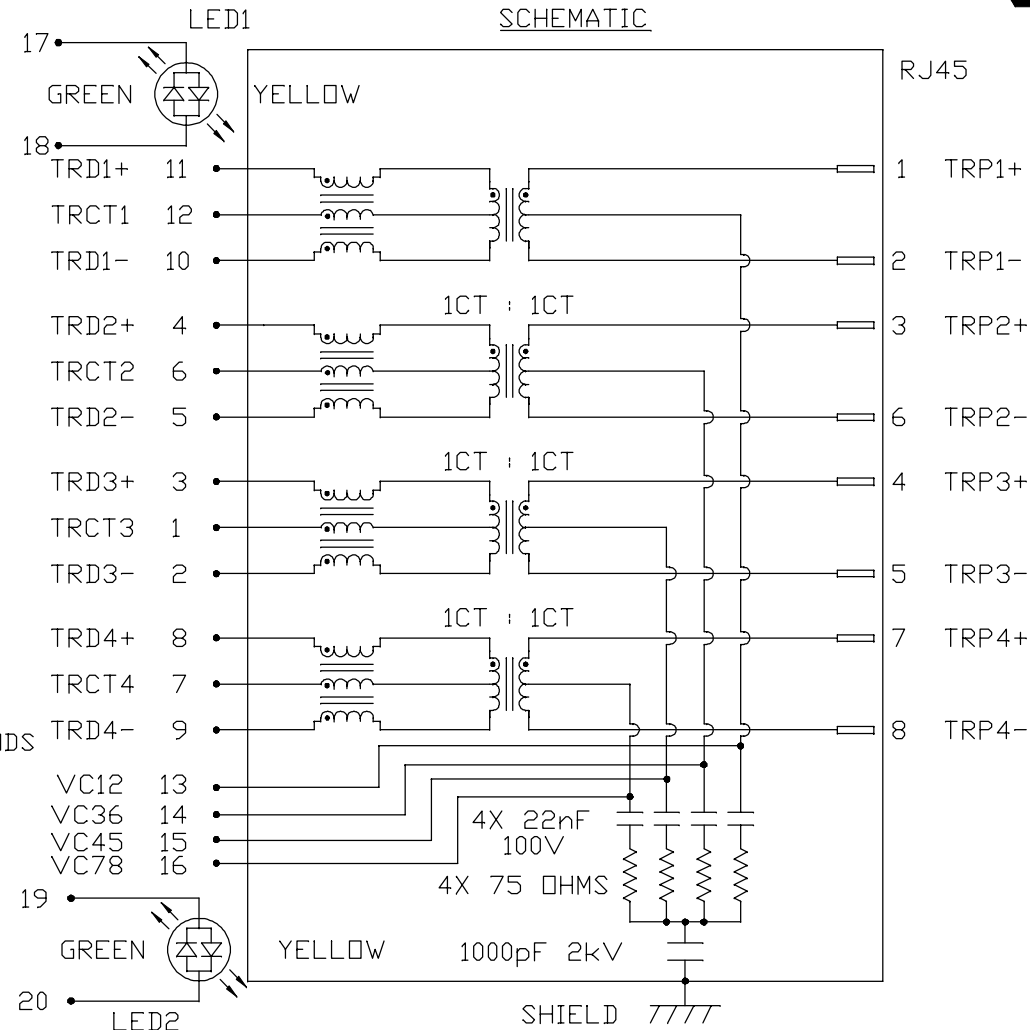



| LED 1 POLARITY | | | LED 2 POLARITY | | |
|----------------|--------|--------|----------------|--------|--------|
| PIN 17 | PIN 18 | COLOR | PIN 19 | PIN 20 | COLOR |
| + | - | YELLOW | + | - | YELLOW |
| - | + | GREEN | - | + | GREEN |

RoHS

OPERATING TEMPERATURE: -40 TO +85°C



PAGE : 2

| | | |
|------|---|---|
| .X | / | UNIT : INCH [mm] |
| .XX | | SCALE : N/A |
| .XXX | |  SIZE : A4 |



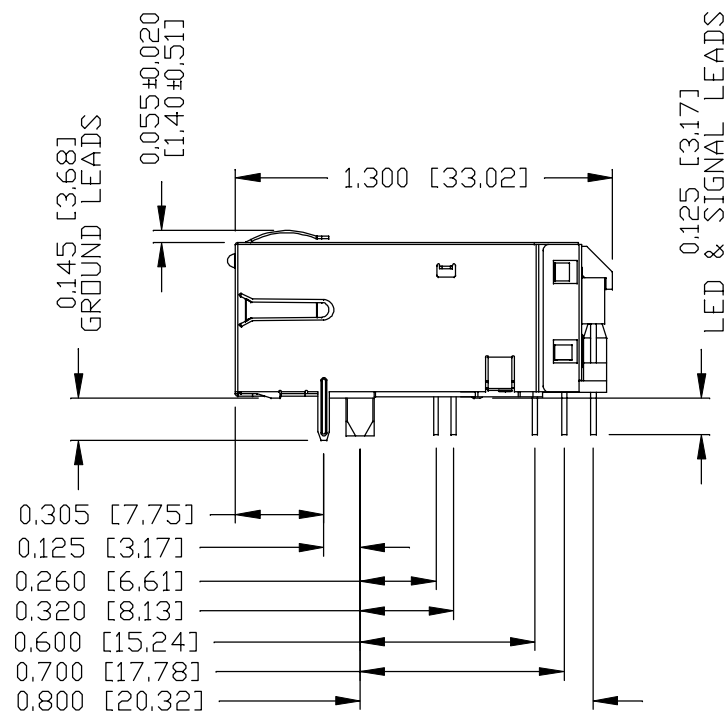
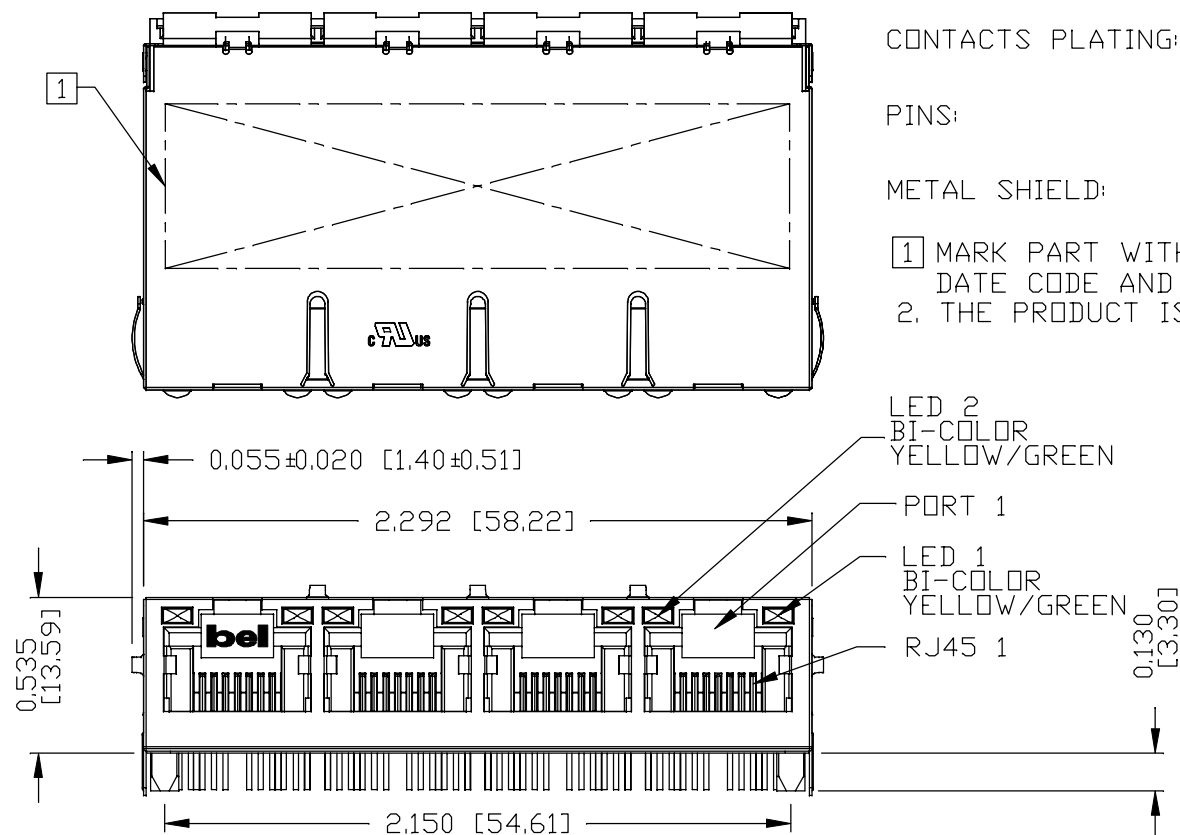
THE INFORMATION CONTAINED HEREIN IS CONSIDERED "PROPRIETARY" TO BEL FUSE INC. AND SHALL NOT BE COPIED, REPRODUCED OR DISCLOSED WITHOUT THE WRITTEN APPROVAL OF BEL FUSE INC.

PRELIMINARY

NOTES:

- PLASTIC HOUSING: THERMOPLASTIC PBT, BLACK
FLAMMABILITY RATING UL 94V-0
- CONTACTS PLATING: 50 MICRO-INCH HARD GOLD PLATING OR EQUIVALENT,
30 MICRO-INCH MIN NICKEL UNDERPLATE.
- PINS: TIN-COATED COPPER WIRE, DIA 0.018 INCH,
100 MICRO-INCH MIN MATTE TIN. PINS ARE SOLDER DIPPED.
- METAL SHIELD: NICKEL PLATED ON COPPER ALLOY.
(ALL GROUND LEADS ARE SOLDER DIPPED)
- 1 MARK PART WITH MFG LOGO, MFG NAME, PART NUMBER
DATE CODE AND PATENTED.
2. THE PRODUCT IS RoHS COMPLIANT.

RoHS



3. JACK CAVITY CONFORMS TO FCC RULES AND REGULATIONS.
4. THE PRODUCT IS PATENTED. THE PATENT NUMBER IS U.S. PAT. 7,123,117.

UL UL RECOGNIZED - FILE #E196366 AND E169987.

5. THE PART IS RECOMMENDED FOR WAVE SOLDERING. THE SUGGESTED PEAK WAVE SOLDERING CONDITION IS 260°C MAX AND 10 SECONDS MAX.

ORIGINATED BY
ANTON LIAO
DATE 2017-02-22

DRAWN BY
JESSE LI
DATE 2017-02-22

TITLE
1X4 gigabit MagJack®
(PoEp, Extended Temperature)
0826-1C4T-GH-F
PATENTED

PART NO. / DRAWING NO.
08261C4TGH-F

FILE NAME
08261C4TGH-F_PB.DWG

STANDARD DIM.
TOL. IN INCH

.X
.XX
.XXX

[] METRIC DIM.
AS REF.

UNIT : INCH [mm]
SCALE : N/A
SIZE : A4

REV. : PB

PAGE : 3

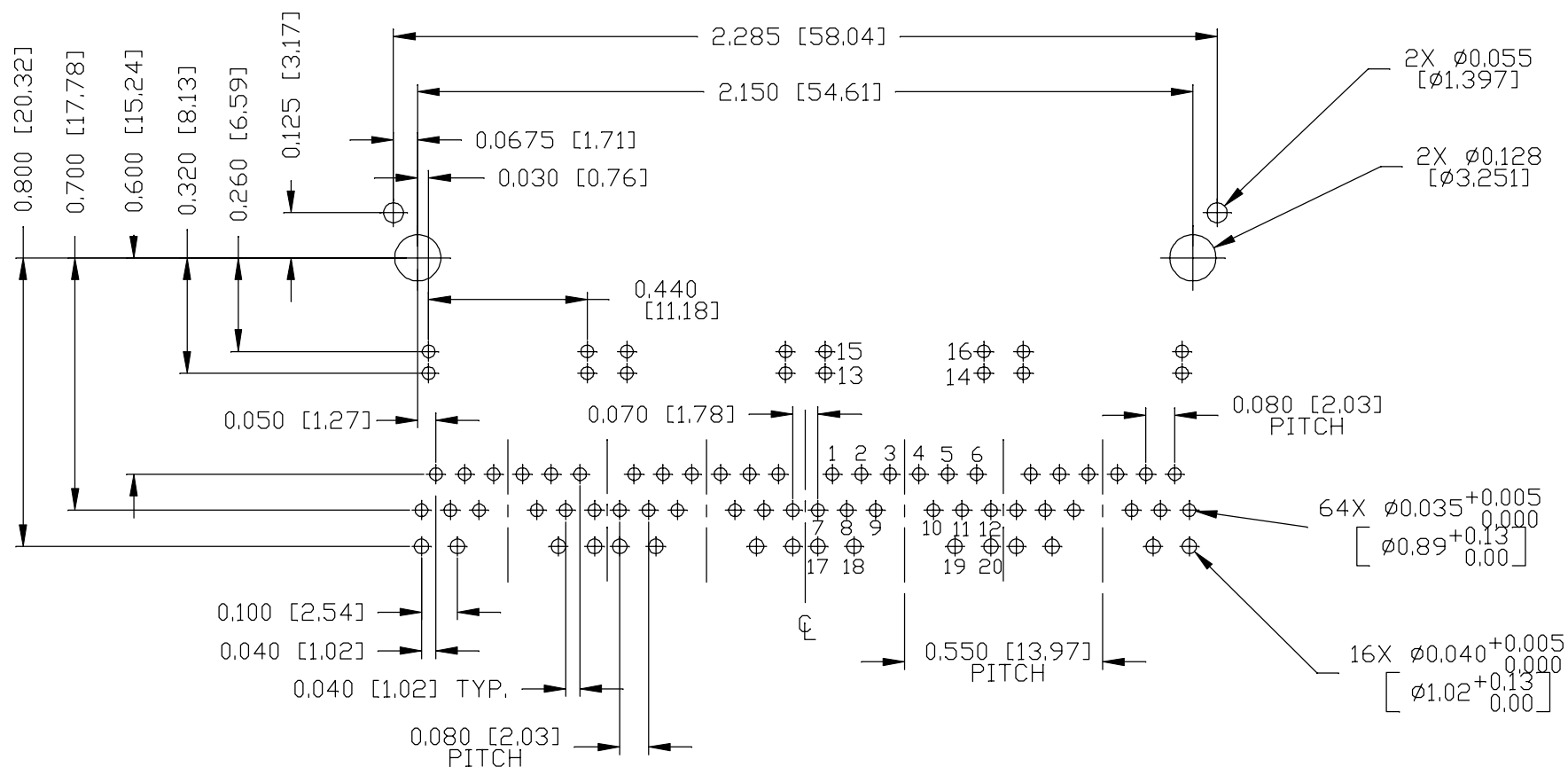


THE INFORMATION CONTAINED HEREIN IS CONSIDERED
"PROPRIETARY" TO BEL FUSE INC. AND SHALL NOT BE
COPIED, REPRODUCED OR DISCLOSED WITHOUT THE
WRITTEN APPROVAL OF BEL FUSE INC.

RECOMMENDED PCB FOOTPRINT
COMPONENT SIDE VIEW

PRELIMINARY

RoHS



ORIGINATED BY
ANTON LIAO
DATE 2017-02-22

DRAWN BY
JESSE LI
DATE 2017-02-22

TITLE
1X4 gigabit MagJack®
(PoEp, Extended Temperature)
0826-1C4T-GH-F
PATENTED

PART NO. / DRAWING NO.
08261C4TGH-F

FILE NAME
08261C4TGH-F_PB.DWG

STANDARD DIM.
TOL. IN INCH

.X

.XX

.XXX

±0.004

[] METRIC DIM.
AS REF.

UNIT : INCH [mm]

SCALE : N/A

SIZE : A4

REV. : PB

PAGE : 4

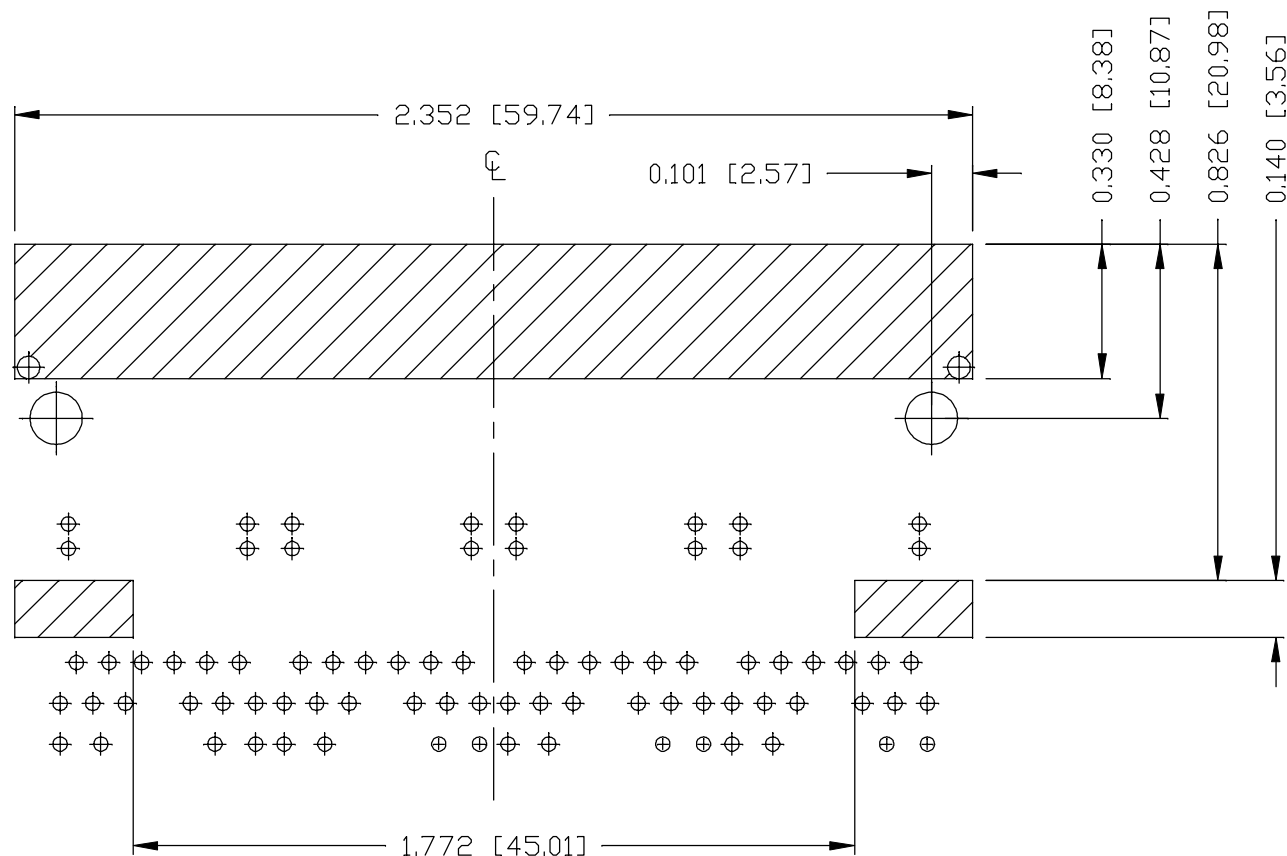


bel MAGNETIC
SOLUTIONS
a bel group

THE INFORMATION CONTAINED HEREIN IS CONSIDERED "PROPRIETARY" TO BEL FUSE INC. AND SHALL NOT BE COPIED, REPRODUCED OR DISCLOSED WITHOUT THE WRITTEN APPROVAL OF BEL FUSE INC.

PRELIMINARY

RoHS



NOTES:

THE SHADED AREA ON THE CUSTOMER BOARD ARE RECOMMENDED TO BE CLEAR OFF ANY VIA HOLE OR COMPONENT PAD.

REV. : PB PAGE : 5

| | | | | | |
|---|--|--|---|--|--|
| ORIGINATED BY ANTON LIAO DATE 2017-02-22 DRAWN BY JESSE LI DATE 2017-02-22 | TITLE 1X4 gigabit MagJack® (PoEp, Extended Temperature) 0826-1C4T-GH-F PATENTED | PART NO. / DRAWING NO. 08261C4TGH-F FILE NAME 08261C4TGH-F_PB.DWG | STANDARD DIM. TOL. IN INCH | | [] METRIC DIM. AS REF. |
| | | | .X | | UNIT : INCH [mm] |
| | | | .XX | | SCALE : N/A |
| | | | .XXX ±0.004 | | SIZE : A4 |



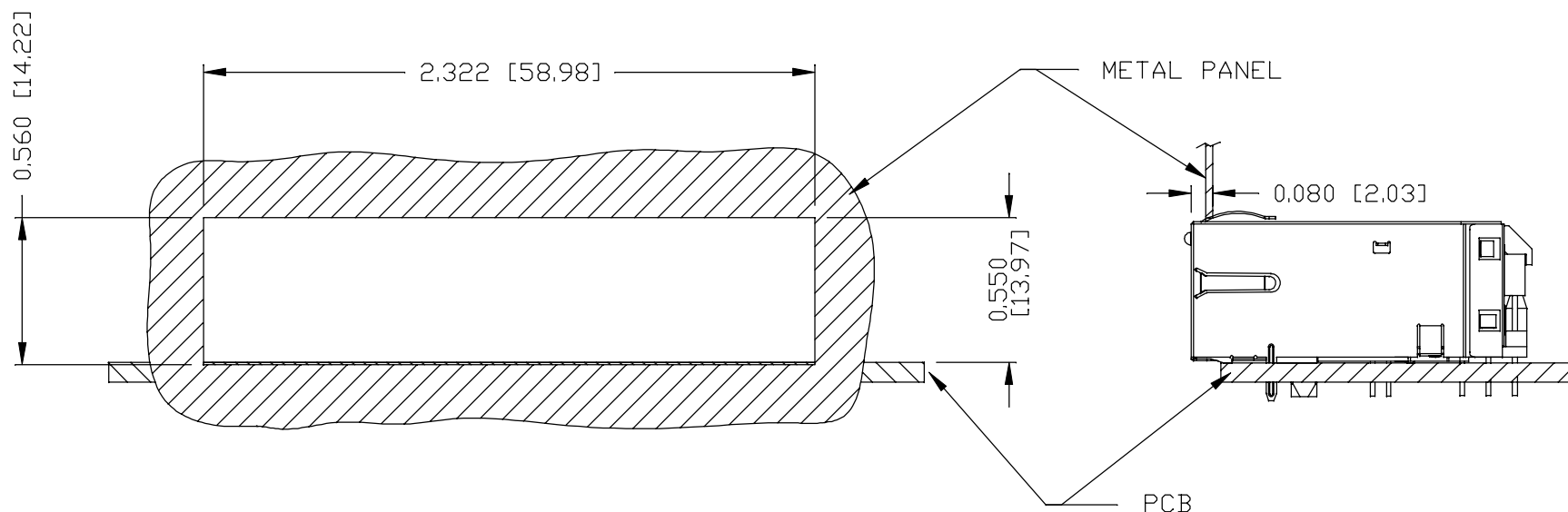
THE INFORMATION CONTAINED HEREIN IS CONSIDERED "PROPRIETARY" TO BEL FUSE INC. AND SHALL NOT BE COPIED, REPRODUCED OR DISCLOSED WITHOUT THE WRITTEN APPROVAL OF BEL FUSE INC.

PRELIMINARY

RoHS



SUGGESTED PANEL OPENING



NOTES:

THE DISTANCE OF PANEL INSIDE SURFACE RELATIVE TO FRONT SURFACE OF PART IS ONLY A SUGGESTION. IN CASE THIS DISTANCE IS DIFFERENT, THE REQUIRED PANEL OPENING DIMENSIONS CHANGE ACCORDINGLY.

PACKING INFORMATION

PACKING TRAY : 0200-9999-B4 (TOP)

0200-9999-B5 (BOTTOM)

PACKING QUANTITY : 24 PCS FINISHED GOODS PER TRAY

10 TRAYS (240 PCS FINISHED GOODS) PER CARTON BOX

NOTE : CARDBOARDS ARE PLACED BETWEEN LAYERS OF PACKING TRAY INSIDE CARTON BOX
(INCLUDE THE UPPERMOST AND LOWERMOST TRAY)

REV. : PB

PAGE : 6

ORIGINATED BY
ANTON LIAO
DATE 2017-02-22

DRAWN BY
JESSE LI
DATE 2017-02-22

TITLE
1X4 gigabit MagJack®
(PoE, Extended Temperature)
0826-1C4T-GH-F
PATENTED

PART NO. / DRAWING NO.
08261C4TGH-F

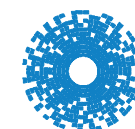
FILE NAME
08261C4TGH-F_PB.DWG

STANDARD DIM.
TOL. IN INCH

| | |
|------|--------|
| .X | |
| .XX | |
| .XXX | ±0.004 |

[] METRIC DIM.
AS REF.

UNIT : INCH [mm]
SCALE : N/A
SIZE : A4



bel MAGNETIC
SOLUTIONS
a bel group