

THE INFORMATION CONTAINED HEREIN IS CONSIDERED "PROPRIETARY" TO BEL FUSE INC. AND SHALL NOT BE COPIED, REPRODUCED OR DISCLOSED WITHOUT THE WRITTEN APPROVAL OF BEL FUSE INC.



ELECTRICAL CHARACTERISTICS

**URNS RATIO**  
 PIN(3-1-2) : (22-24-23)      1CT : 1CT  
 PIN(6-4-5) : (19-21-20)      1CT : 1CT  
 PIN(9-7-8) : (16-18-17)      1CT : 1CT  
 PIN(12-10-11) : (13-15-14)    1CT : 1CT

**□CL**      350μH MIN. AT 100kHz, 100mV  
 -40°C TO +85°C      WITH 8mA DC BIAS

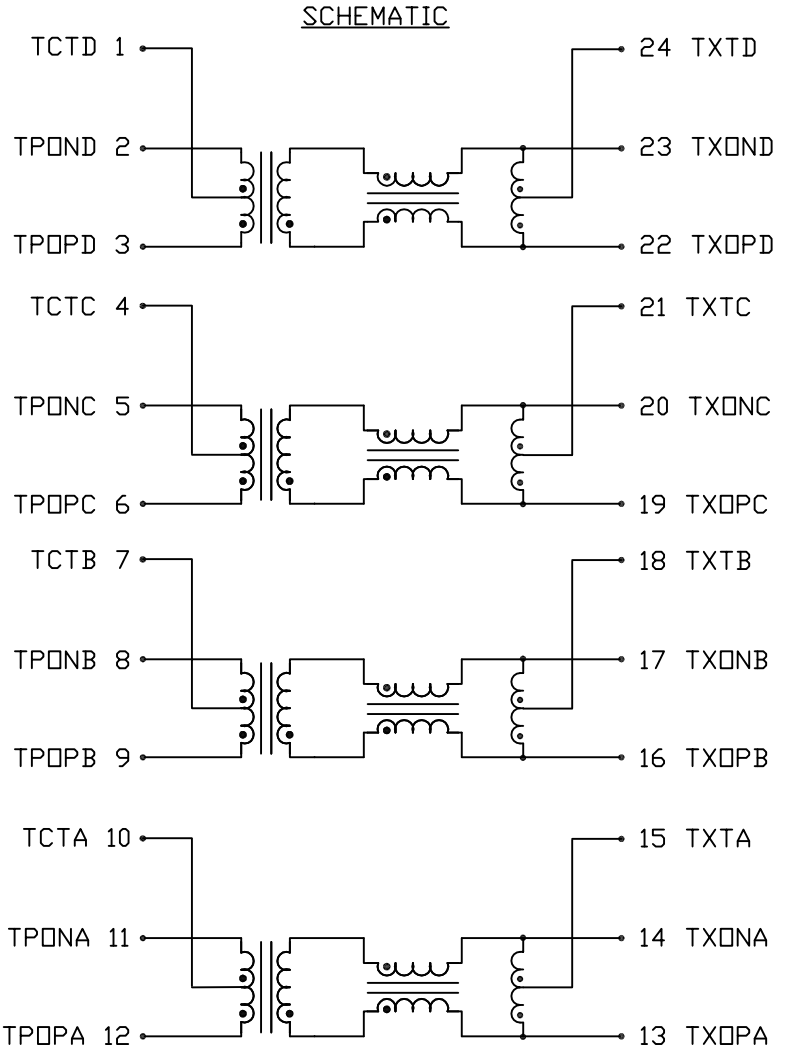
**INSERTION LOSS**      1.1dB MAX. @ 0.1 MHz  
                                  0.5dB MAX. @ 1 MHz  
                                  0.8dB MAX. @ 65 MHz  
                                  1.0dB MAX. @ 100 MHz  
                                  1.5dB MAX. @ 125 MHz

**RETURN LOSS**      18dB MIN. @ 0.5 TO 40 MHz  
 UNDER 100 □HMS      12-20LOG (f/80 MHz) dBMIN.  
 ±15% ENVIRONMENT      @ 40 TO 100 MHz

**COMMON TO COMMON REJECTION** 30dB MIN. @ 0.1 TO 100 MHz

**CROSSTALK**      @ 1-100 MHz  
                          33-20LOG (f/100 MHz) dB MIN.

**HIPOT**      LEAKAGE CURRENT LESS THAN 1mA AT 1500VAC



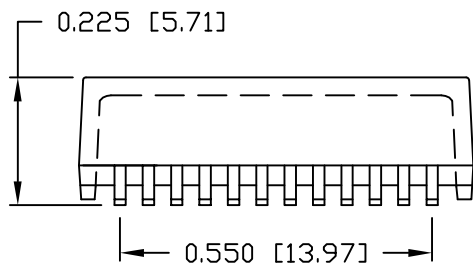
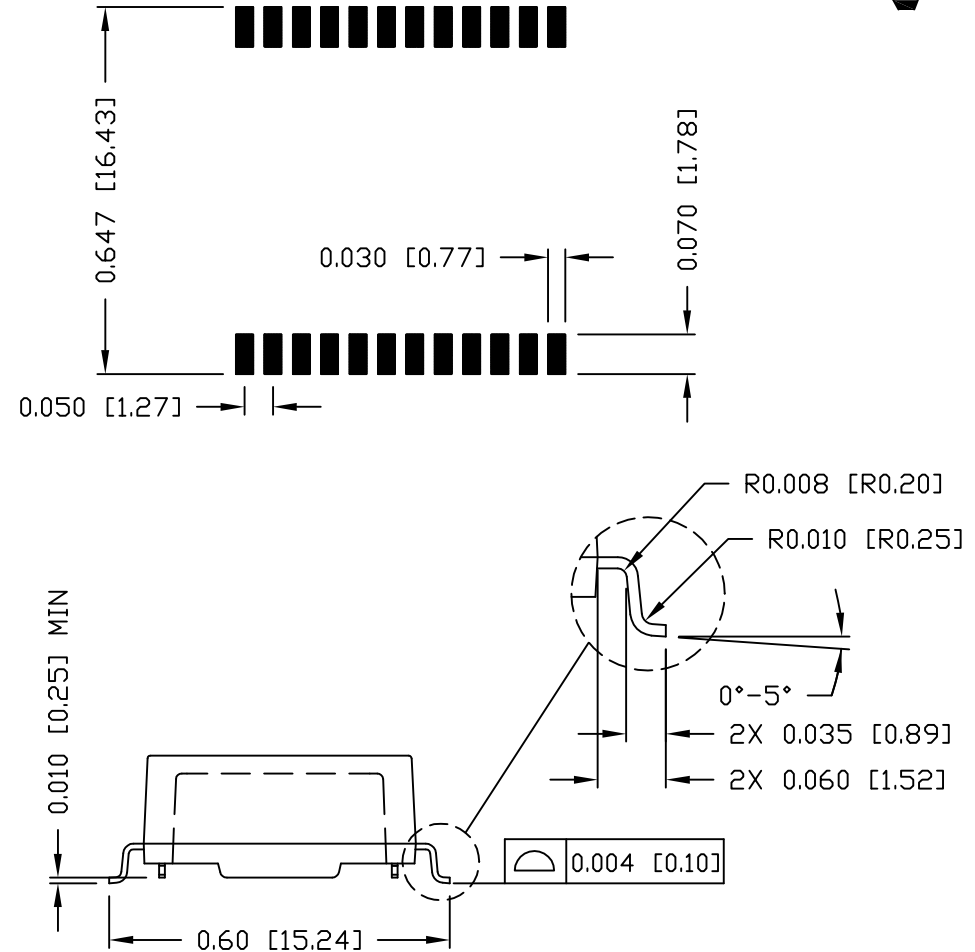
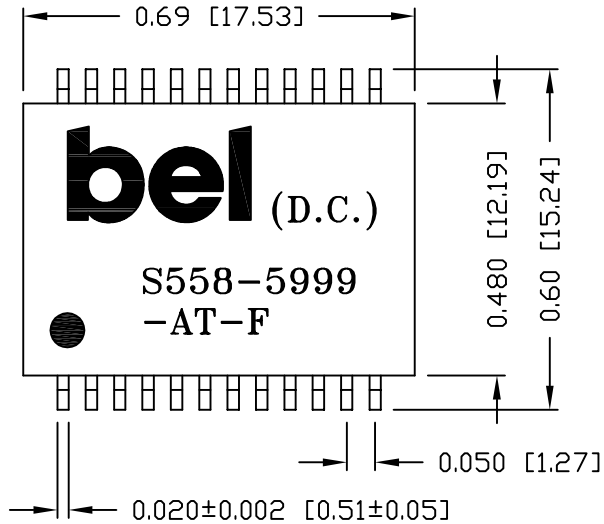
<b>ORIGINATED BY</b> Alice Pang		<b>DATE</b> 2021-01-27	<b>TITLE</b> 1000BASE-T MAGNETIC MODULES S558-5999-AT-F	<b>PART NO. / DRAWING NO.</b> S558-5999-AT-F		<b>STANDARD DIM.</b> [ ] METRIC DIM. AS REF.		<b>REV. :</b> A	<b>PAGE :</b> 2
<b>DRAWN BY</b> ZC Guo		<b>DATE</b> 2021-01-27		<b>FILE NAME</b> S5585999ATFA.DWG		<b>TOL. IN INCH</b> .X .XX .XXX		<b>UNIT :</b> INCH [mm] <b>SCALE :</b> N/A <b>SIZE :</b> A4	

THE INFORMATION CONTAINED HEREIN IS CONSIDERED "PROPRIETARY" TO BEL FUSE INC. AND SHALL NOT BE COPIED, REPRODUCED OR DISCLOSED WITHOUT THE WRITTEN APPROVAL OF BEL FUSE INC.

RoHS



SUGGESTED PCB PAD LAYOUT



NOTES:

- STANDARD MARKING REFER TO DOC. HAND-WORK-04.
- PACKAGE CODE: "RQS001".

REV. : A PAGE : 3

ORIGINATED BY	DATE	TITLE
Lawrence Tsang	2021-01-27	MECHANICAL DRAWING S558-5999-AT-F
DRAWN BY	DATE	
ZC Guo	2021-01-27	

PART NO. / DRAWING NO.	STANDARD DIM.	[ ] METRIC DIM. AS REF.
S558-5999-AT-F	TOL. IN INCH	UNIT : INCH [mm]
FILE NAME	.X	SCALE : N/A
S5585999ATFA.DWG	.XX ±0.01	SIZE : A4
	.XXX ±0.005	

