

# 3PH-EV Series

## Three Phase Distribution Transformers

The 3PH-EV Series of three phase distribution transformers offers mechanically rigid units in a durable construction used in fast acting DC charging stations for electric vehicles.

These rugged and robust distribution transformers are designed and configured for DELTA primary and WYE secondary. DELTA supplies greater current balance from the source and WYE provides a neutral point to supply line- neutral voltages. WYE also offers multiple voltages without the need for additional transformers.



### General Features

- Winding conductor: aluminum or copper
- Vector group Delta - Wye (DYN)

### Specifications

- Operation frequency 60 Hz
- Primary voltage 600 V
- Primary terminals H1-H2-H3
- Secondary voltage 480Y / 277 V
- Secondary terminals X0-X1-X2-X3
- Temperature rise 150°C
- Insulation class 220 (R)
- Insulation level (B.I.L) 10kVA
- Sound level <65 dB

### PRODUCT SELECTION GUIDE

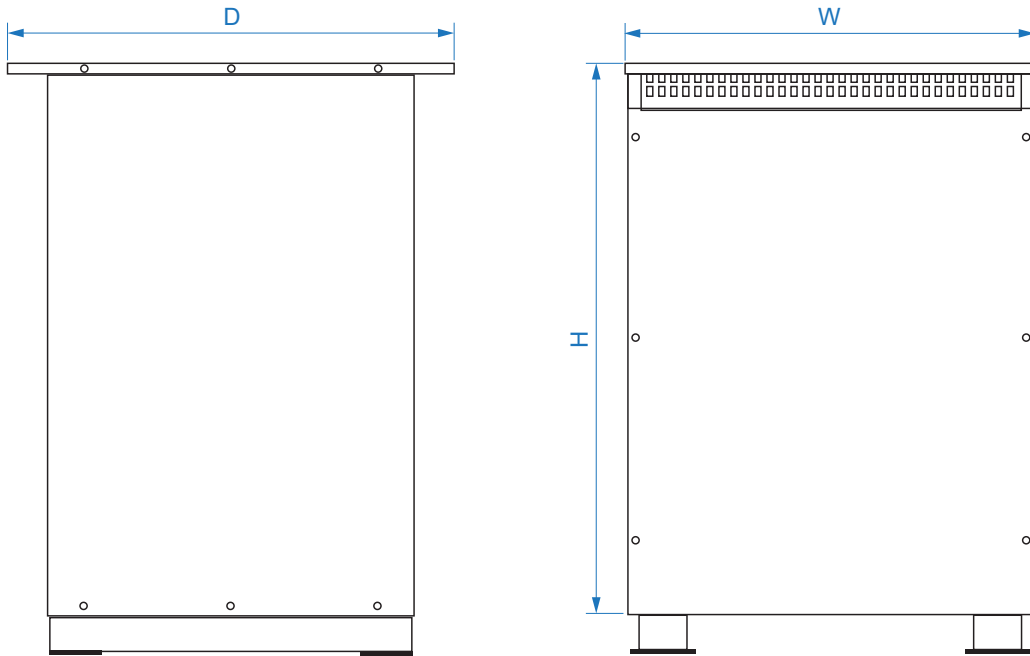
PART NUMBER	POWER (kVA)	H (inch)	W (inch)	D (inch)	WEIGHT (lb)
3PH-EV-45-A 3PH-EV-45-C	45	30	25	21	480
3PH-EV-75-A 3PH-EV-75-C	75	44	31	34	740
3PH-EV-150-A 3PH-EV-150-C	150	52	40	38	1230
3PH-EV-200-A 3PH-EV-200-C	200	52	40	38	1700
3PH-EV-225-A 3PH-EV-225-C	225	52	40	38	1910
3PH-EV-300-A 3PH-EV-300-C	300	66	46	50	2400
3PH-EV-375-A 3PH-EV-375-C	375	66	46	50	2650
3PH-EV-450-A 3PH-EV-450-C	450	66	46	50	2900

**NOTE:** Add suffix "A" to PN for Aluminum winding conductors and suffix "C" to part number for Copper winding conductors.

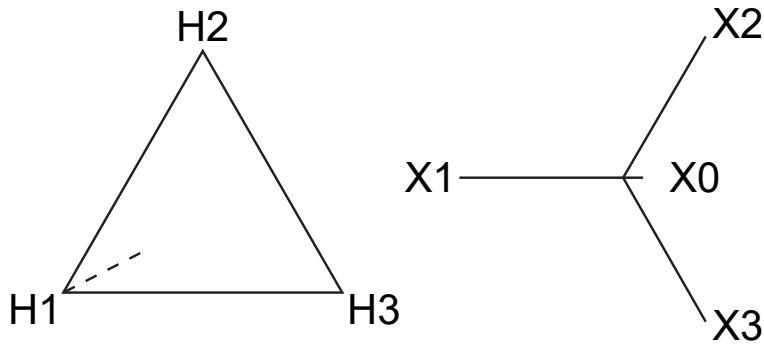


[belfuse.com/signal](http://belfuse.com/signal)

## MECHANICAL DRAWING



## WIRING

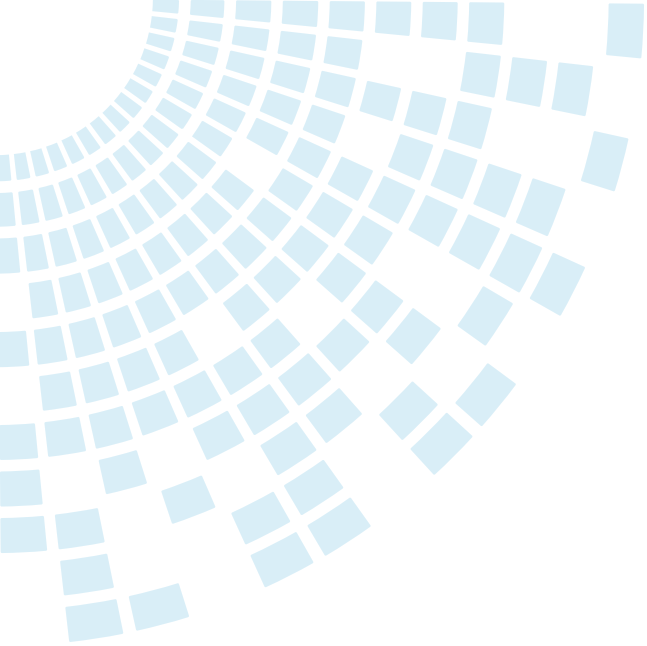


**Custom versions available upon request.**



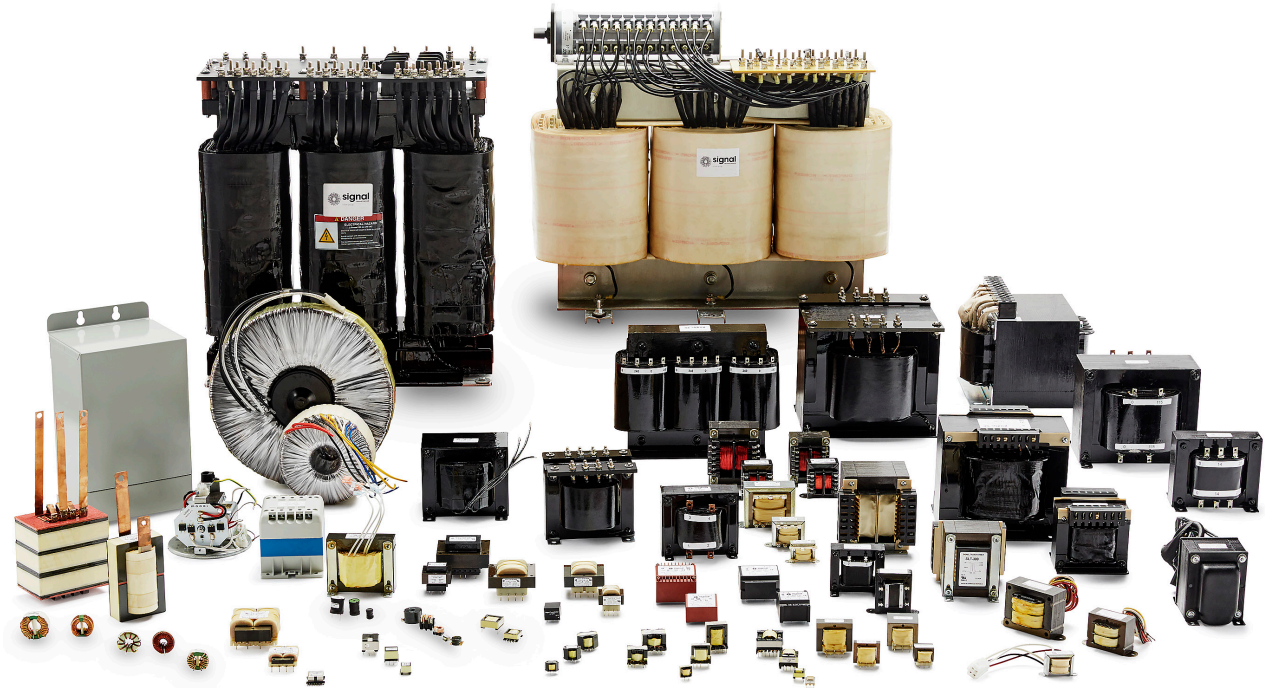
128 Atlantic Avenue, Lynbrook, NY 11563  
Toll Free 866-239-5777 | Tel 516-239-5777 | Fax 516-239-7208  
sales@signaltransformer.com | techhelp@signaltransformer.com

[belfuse.com/signal](https://belfuse.com/signal)



## About Signal Transformer

Signal Transformer is known as the world's leader of wire wound magnetic solutions since 1959. With over 50 years of experience manufacturing transformers, chokes, inductors and custom or modified standard products. Signal offers not only the most comprehensive line of certified standard power conversion products, with our vast engineering, manufacturing and regulatory resources; Signal Transformer excels in the design and manufacturer of cost effective, specialized platforms.



**For more information,  
please contact us:**

128 Atlantic Avenue  
Lynbrook, NY 11563

**Toll Free +1 866-239-5777**

Tel +1 516-239-5777

Fax +1 516-239-7208

sales@signaltransformer.com  
techhelp@signaltransformer.com

[belfuse.com/signal](https://www.belfuse.com/signal)

