

NAC3006-01

Network Attached Controller for Power Shelves

The **NAC3006-01** is a shelf level controller providing monitoring and control functions through a 10/100/1000MB base Ethernet port and can be connected directly to the data center management network. It is hot-pluggable and supplied via the 12V standby provided by the power supplies in the shelf. The controller provides a web interface for upgrading the controller, the backplane and power supplies; the monitoring and control functions are accessed through SNMPv1/2c/3. The NAC3006-01 meets international safety standards and displays the CE-Mark for the European Low Voltage Directive (LVD).



KEY FEATURES

- 10/100/1000MB Ethernet port
- HP Auto MDI/MDI-X to reliably detect and correct crossover cables
- Web interface for easy setup
- SNMPv1/2c/3 protocol with TRAP, SET and GET over Ethernet
- Directly supplied from shelf standby voltage; Low consumption
- Hot-plug capable
- Fits in all OCP shelves; front accessible
- Small form factor: 43.5 x 20.0 x 160.0 mm
- Robust RS485 communication to shelf backplane
- RoHS Compliant
- 2 Status LEDs; Reset button; Ethernet activity LED
- Supports IPv4 and IPv6

APPLICATIONS

- High Performance Servers / Power Shelves
- OCP Racks
- General Computer Racks

1. ORDERING INFORMATION

NAC	3006	-	01	COMMENT
Product Family	Number	Dash	Options	
NAC	3006	-	01	NAC for AC/DC 240 / 277 VAC Power Shelves

2. OVERVIEW

The NAC is a highly integrated shelf controller which interfaces with the backplane controller and power supplies of SPSPFE3 high density power shelves for server applications. It is hot-pluggable and provides a front accessible 10/100/1000MB Ethernet port.

A MIB file allows the easy integration of the power shelf into a data center management tool. Static and dynamic data content is made available through the MIB definition for the controller, the backplane and each power supply including serial number information, revisions, date code, input voltage/current/power, output voltage/current/power and temperatures. It further allows to upgrade the power supplies via the network.

Figure 1 provides an overview of the controller interfaces with the different components in the shelf.

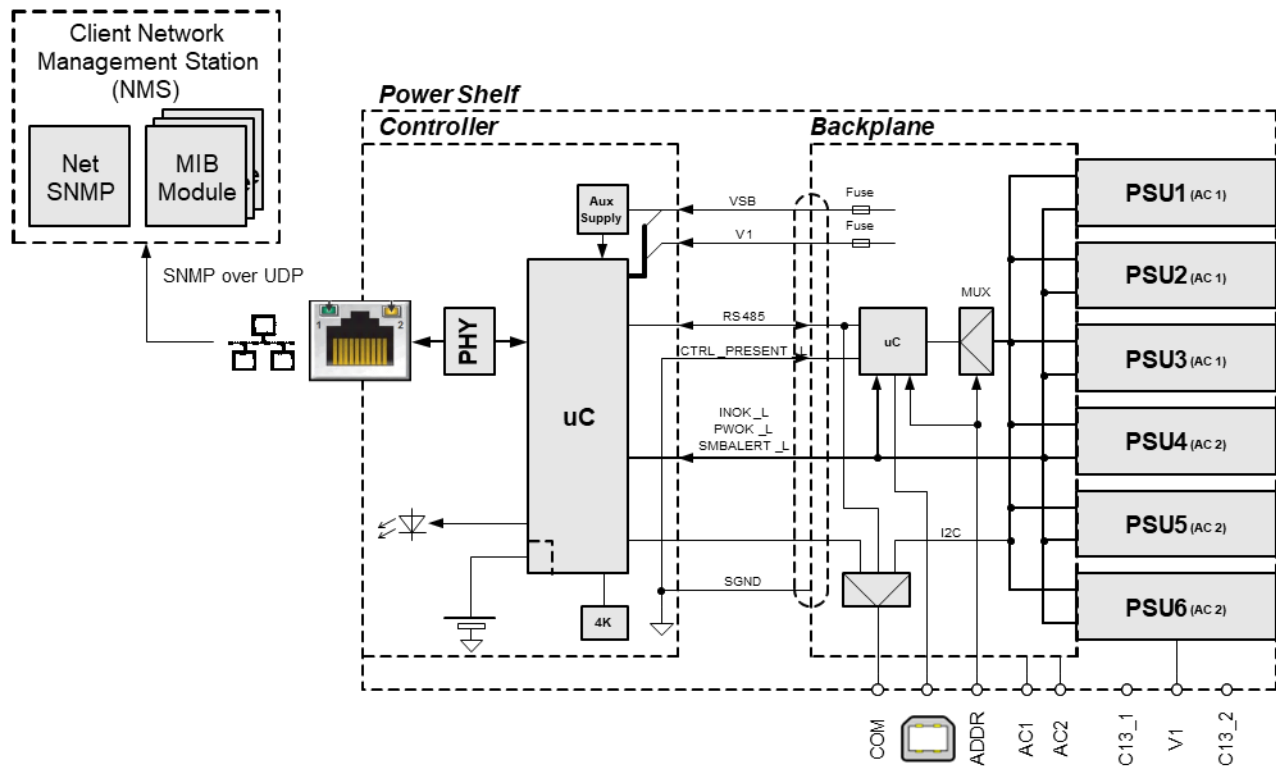


Figure 1. NAC3006-01 block diagram and its integration into SPSPFE3 power shelves

3. SUPPLY VOLTAGE

Stresses more than the absolute maximum ratings may cause performance degradation, adversely affect long-term reliability, and cause permanent damage to the supply.

The supply voltage is directly provided by the power supply units in the SPSPFE3 shelf which is typically 12V. A separate fuse is provided on the backplane to protect the wiring to the controller and the controller itself.

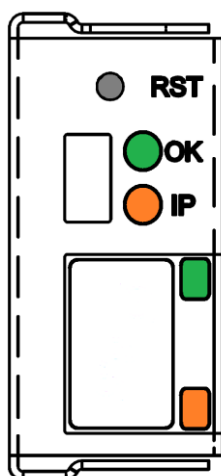
PARAMETER	CONDITIONS / DESCRIPTION	MIN	MAX	UNITS
$V_{i\ maxc}$	Maximum Input	Continuous	13.2	VDC
P_i	Power Consumption	$V_i = 12\ V$	1.5	W

4. LAN PORT

The LAN should be connected to the RJ45 connector on the front of the NAC3006-01. The Ethernet port is galvanically isolated from the PSU output and is connected to a 10Base-T/100Base-TX/1000Base-T physical-layer transceiver for transmission and reception of data over standard CAT-5 unshielded twisted pair (UTP) cables. The built-in HP Auto MDI/MDI-X function allows to reliably detect and auto correct straight-through and crossover cable connections. The transceiver will automatically negotiate and select the highest link-up speed (10/100/1000Mbps) and duplex (half/full) configuration.

Once the interface has received an IP address on the network, the yellow LED on the controller is disabled. On the RJ45 connector, only the green LED is active and lights up when there is traffic activity on the network.

5. FRONT LEDs / BUTTON



OK LED: Green

Blinking 0.9/0.1 sec: Normal operation / active

Off: Initiating cold start (see RST button)

Blinking 0.1/0.1 sec: Initiating factory reset (see RST button)

IP LED: Orange

On: Ethernet not active / no IP address

Off: Ethernet on, received IP address

Blinking 0.3/0.7 sec: Ethernet on, received IPv4 address, no IPv6 address

Blinking 0.7/0.3 sec: Ethernet on, received IPv6 address, no IPv4 address

RJ45 LED: Green

Blinks on Ethernet link activity.

RJ45 LED: Orange

Not used

RST Button: (use a pen to press the recessed button)

Pressing < 1 sec: no function.

Pressing > 1 sec: Green OK LED switches off indicating that if button is released, a cold start will be initiated.

Releasing button after > 1 sec and < 7 sec: cold start is executed.

Pressing button > 7 sec: Green OK LED starts blinking at a rate of 0.1/0.1 sec indicating that if button is released, a factory reset will be initiated.

Releasing button after > 7 sec: factory reset is being initiated.

6. WEB INTERFACE

The controller hosts a web interface reporting information (or notification) of the controller, the backplane controller, and the power supplies. Reviewing or exporting logs, configuring network settings. Further it also gives access to the MIB file content which can then be used to monitor the shelf and power supplies via SNMP.

The web interface is accessed through the normal (port 80) or secure (port 443) http protocol at the controller IP address with any browser (IE, Microsoft Edge, Chrome, or Firefox). A log-in is required to access the web interface (see Software Documentation).

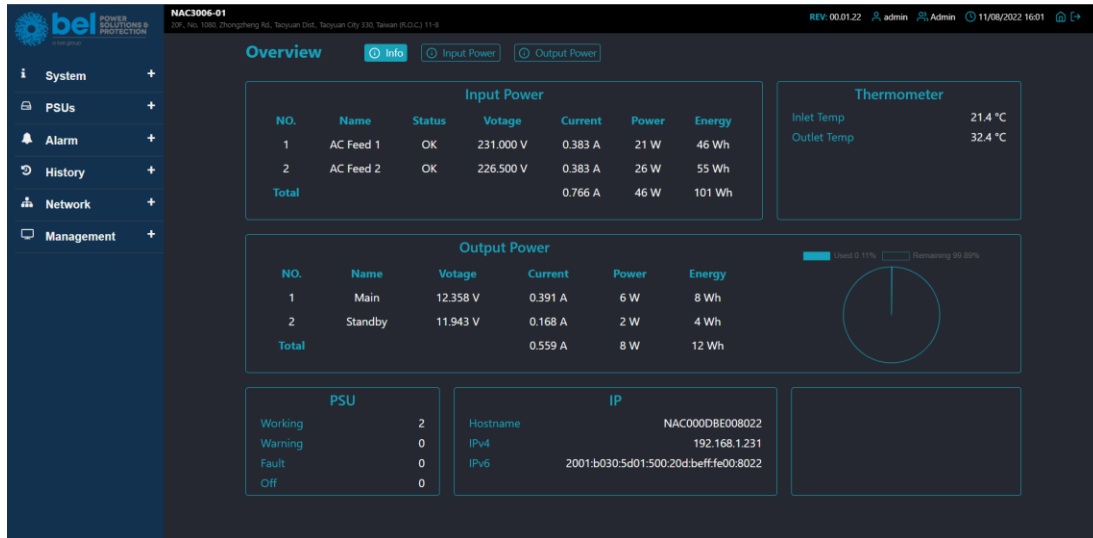


Figure 2. NAC3006-01 Web interface

7. SNMP / MIB

In order to use the monitoring/control feature of the NAC through SNMPv1/2c/3, the corresponding Management Information Base (MIB) file should be loaded into a Network Management Station (NMS). The MIB file for the controller can be accessed through the web interface under "Download" page (in the menu item "Management"). A link is provided which will save a local copy of the file.

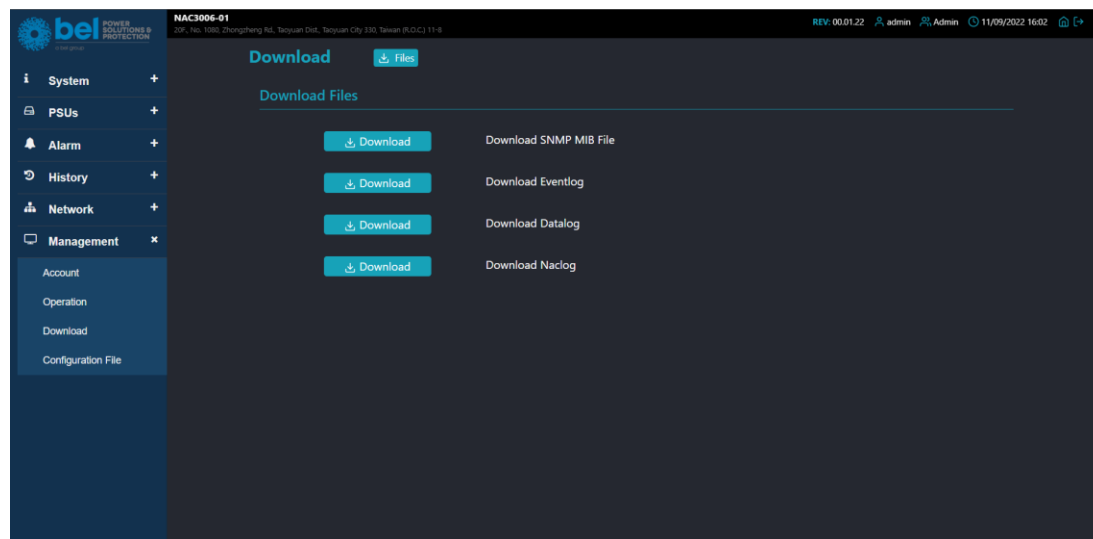


Figure 3. NAC3006-01 Web interface to access the SNMP MIB file.

8. SAFETY / APPROVALS

This device has been designed to meet IEC/EN 60950, and UL 60950. It provides a functional galvanic isolation for the Ethernet port. Electric isolation tests should not be repeated in the field. Bel Power Solutions will not honor any warranty claims resulting from electric isolation field tests.

9. ENVIRONMENTAL

PARAMETER			MIN	NOM	MAX	UNIT
T_A	Ambient Temperature		0		+45	°C
T_s	Storage Temperature	Non-operational	-40		+70	°C
	Cooling	Natural convection				

10. MECHANICAL

PARAMETER	DESCRIPTION / CONDITION	MIN	NOM	MAX	UNIT
Dimensions	Width		43.5		mm
	Height		20.0		mm
	Depth		160.0		mm
m	Weight		155		g

NOTE: A 3D step file of the casing is available on request

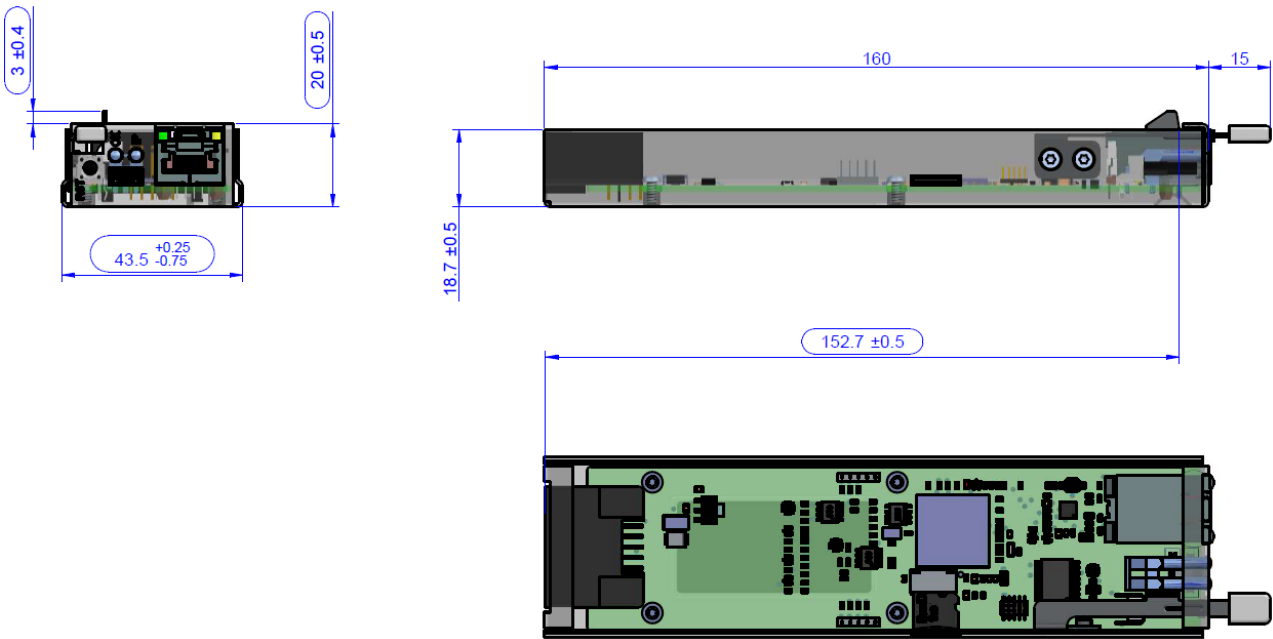


Figure 4. Front, side, top view



11. CONNECTORS

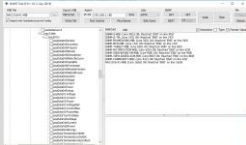
Connection to backplane: FCI Connectors P/N: 51939-920LF
 Note: A1 and A2 are Trailing Pin (short pins)
 Counterpart: FCI P/N: 10129998-020

Ethernet RJ45

PIN	NAME	DESCRIPTION
A1	CTRL_PRESENT_L	Controller present active low (connected to SGND)
B1	PWOK_L	Power OK active low (input)
C1	12V	12 V supply (only used for sense)
D1	VSB12V	Standby 12 V supply
A2, B2, C2, D2	SGND	Signal ground return
A3, C3	N.C.	No connects
B3, D3	RS485A / B	RS485 A/B communication
A4	SMBALERT_T	Power Management Bus SMBALERT signal low active (input)
B4, D4	SGND	Signal ground return
C4	N.C.	No connects
A5	INOK_L	Input OK signal active low (input)
B5, D5	CAN_H/_L	CAN H/L communication
C5	N.C.	No connects

Figure 5. Pin assignment

12. ACCESSORIES

ITEM	DESCRIPTION	ORDERING PN	SOURCE
	SNMPTest Utility Windows Vista/7/8/10 compatible GUI to control and monitor NAC	N/A	belfuse.com/power-solutions

13. REVISION HISTORY

REV	DESCRIPTION	PRODUCT VERSION	DATE	AUTHOR
A	Initial draft	V001	Mar. 14, 2023	KH

For more information on these products consult: tech.support@psbel.com

NUCLEAR AND MEDICAL APPLICATIONS - Products are not designed or intended for use as critical components in life support systems, equipment used in hazardous environments, or nuclear control systems.

TECHNICAL REVISIONS - The appearance of products, including safety agency certifications pictured on labels, may change depending on the date manufactured. Specifications are subject to change without notice.



Asia-Pacific
+86 755 298 85888

Europe, Middle East
+353 61 49 8941

North America
+1 866 513 2839

© 2023 Bel Fuse Inc.

BCD.20227 rev. A