

F1A2-3838 Series

Shielded SMD Power Inductors

Signal Transformer is introducing the beginning of a new family of low-profile shielded surface mount power inductors with the release of the second of three series, F1A2-3838. Height profiles of 1.2 mm to 1.8 mm, small footprints of 3.8 mm x 3.8 mm and broad range of inductance and current ratings, make them idea for a wide range of applications.

Power inductors are an essential component in the voltage regulator topology. Virtually every circuit that regulates power in automobiles, electronics and DC-DC converters requires an inductor.

Magnetically shielded inductors minimize EMI while balancing small size with low DCR and high current ratings. Perfect as power chokes eliminating noise in power supplies for automotive, commercial, industrial, and high-reliability designs.

They are primarily used in electrical power and electronic devices for these major purposes: Choking, blocking, attenuating, or filtering high frequency noise in electrical circuits. Storing energy in power converters (DC-DC or AC-DC) or inverters (DC-AC).



General Features

- Magnetically shielded construction
- Surface mount
- Copper base with DR core & RI core
- Reduced size (small footprint) & weight
- Low Profile & High current
- Automated process
- New designed terminal for low cost

Specifications

- Inductance Range: 1.0 μ H to 47 μ H
- Saturation Rated Current: 0.28 A to 3.5 A
- Rated Current: 0.32 to 1.6 A_{RMS}
- Operating Temperature Range: -40°C to +125°C (Including coil self-temperature rise)
- Storage Temperature Range (component): -40°C to +125°C

Applications

- DC-DC converters in consumer, industrial & telecom electronics
- Wearable devices
- HDDs, SSDs
- Smartphones
- Digital equipment
- Laptops, digital cameras
- Filtering of supply voltages

PRODUCT IDENTIFICATION

F1A2 - 383812 - 220 M

Type / Product Series

F1A2 = Shielded SMD Power Inductors

Dimensions

383812 = 3.8 x 3.8 x 1.2 mm

383815 = 3.8 x 3.8 x 1.5 mm

383818 = 3.8 x 3.8 x 1.8 mm

Inductance *

220 = 22 μ H

* Note: Expressed by three figures. The unit is micro henry (μ H). The first and second figures are significant digits, the third figure expresses the number of zeros which follow the two figures.

If there is a decimal point, it is expressed by the capital letter "R" (3R8 = 3.8 μ H). In that case, all figures are significant digits.

Inductance Tolerance

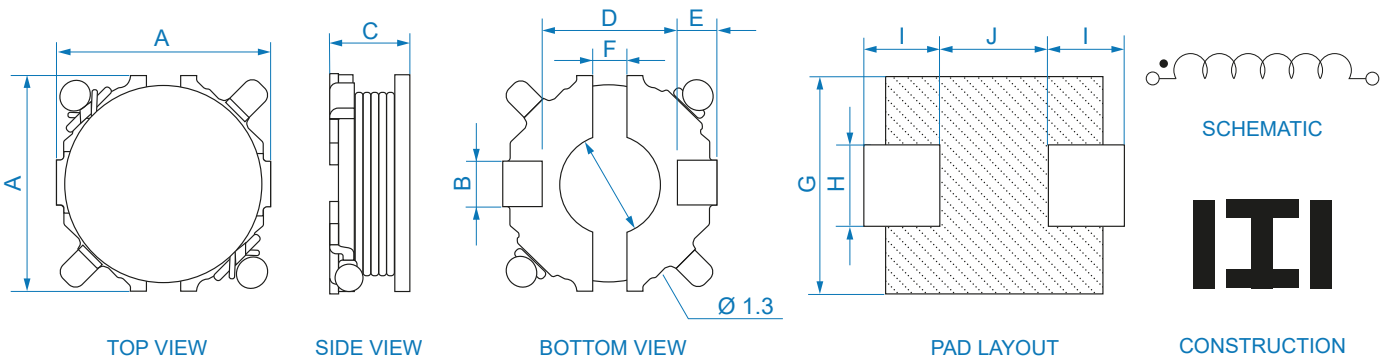
M = $\pm 20\%$

N = $\pm 30\%$

MECHANICAL SPECIFICATIONS

Dimensions are in mm.

SERIES	A	B	C Max	D	E	F	G	H	I	J
F1A2-383812	3.8 \pm 0.2	1.1	1.2	2.4	0.7	0.6	4.0	1.5	1.4	2.0
F1A2-383815	3.8 \pm 0.2	1.1	1.5	2.4	0.7	0.6	4.0	1.5	1.4	2.0
F1A2-383818	3.8 \pm 0.2	1.1	1.8	2.4	0.7	0.6	4.0	1.5	1.4	2.0



- Co-planarity: 0.15 Max
- Undeclared tolerance:
X.X \pm 0.25 unless stated otherwise
X.XX \pm 0.15 unless stated otherwise

Custom versions available upon request.



128 Atlantic Avenue, Lynbrook, NY 11563
Toll Free 866-239-5777 | Tel 516-239-5777 | Fax 516-239-7208
sales@signaltransformer.com | techhelp@signaltransformer.com

belfuse.com/signal

ELECTRICAL SPECIFICATIONS

Electrical specifications for all part numbers measured at 25°C unless stated otherwise.

F1A2-383812 SERIES

Part Number	Inductance L (μH)	Tolerance (± %)	Test Freq. (0.1 V) (kHz)	DCR Max. (Typ.) (mΩ)	IsAT Max. ¹ (A)	IRMS Max. ² (A)
F1A2-383812-1R0N	1.0	30	100	60 (50)	2.20	1.50
F1A2-383812-1R2N	1.2	30	100	65 (55)	2.00	1.40
F1A2-383812-1R8N	1.8	30	100	85 (70)	1.80	1.30
F1A2-383812-2R2N	2.2	30	100	95 (80)	1.60	1.20
F1A2-383812-2R7N	2.7	30	100	120 (100)	1.40	1.05
F1A2-383812-3R3N	3.3	30	100	140 (115)	1.30	1.00
F1A2-383812-4R7N	4.7	30	100	175 (145)	1.10	0.90
F1A2-383812-5R6N	5.6	30	100	190 (160)	1.00	0.84
F1A2-383812-6R8N	6.8	30	100	240 (200)	0.90	0.80
F1A2-383812-8R2N	8.2	30	100	265 (220)	0.84	0.77
F1A2-383812-100M	10.0	20	100	280 (235)	0.65	0.75
F1A2-383812-120M	12.0	20	100	360 (300)	0.60	0.65
F1A2-383812-150M	15.0	20	100	420 (350)	0.55	0.60
F1A2-383812-180M	18.0	20	100	575 (480)	0.48	0.50
F1A2-383812-220M	22.0	20	100	650 (540)	0.45	0.48
F1A2-383812-270M	27.0	20	100	820 (680)	0.38	0.42
F1A2-383812-330M	33.0	20	100	935 (780)	0.35	0.42
F1A2-383812-390M	39.0	20	100	1090 (910)	0.32	0.37
F1A2-383812-470M	47.0	20	100	1440 (1200)	0.28	0.32

¹ IsAT (Saturation Rated Current): The current when the inductance becomes 30% lower than its initial value (Ta = 25°C and Ta = 100°C).

² IRMS (Temperature Rise Current): The current when the temperature of coil increases up to max. ΔT = 40°C (Ta = 25°C).

- Test equipment**

L: measured on Agilent 4284A LCR meter or equivalent

DCR: measured on Chroma 16502 micro-ohm meter or equivalent

IsAT & IRMS: measured on Agilent 4284A LCR meter with 42841A Current source or equivalent

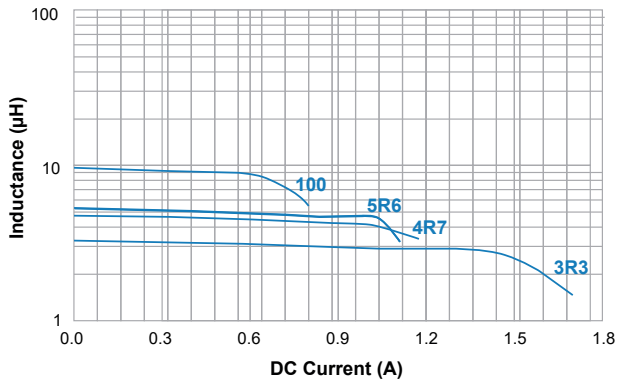
Custom versions available upon request.



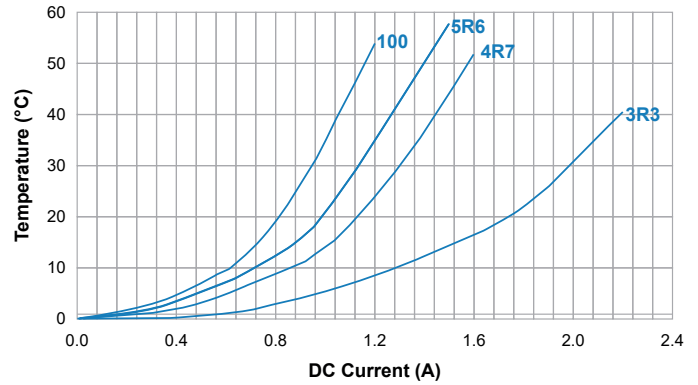
128 Atlantic Avenue, Lynbrook, NY 11563
 Toll Free 866-239-5777 | Tel 516-239-5777 | Fax 516-239-7208
 sales@signaltransformer.com | techhelp@signaltransformer.com

belfuse.com/signal

TYPICAL PERFORMANCE CURVES



Inductance vs DC current



Temperature rise vs DC current

Custom versions available upon request.



128 Atlantic Avenue, Lynbrook, NY 11563
Toll Free 866-239-5777 | Tel 516-239-5777 | Fax 516-239-7208
sales@signaltransformer.com | techhelp@signaltransformer.com

belfuse.com/signal

F1A2-383815 SERIES

Part Number	Inductance L (μ H)	Tolerance (\pm %)	Test Freq. (0.1 V) (kHz)	DCR Max. (Typ.) (m Ω)	I _{SAT} Max. ¹ (A)	I _{RMS} Max. ² (A)
F1A2-383815-1R0N	1.0	30	100	60 (50)	2.70	1.50
F1A2-383815-1R2N	1.2	30	100	70 (60)	2.30	1.40
F1A2-383815-1R8N	1.8	30	100	85 (70)	2.10	1.30
F1A2-383815-2R2N	2.2	30	100	95 (80)	1.90	1.25
F1A2-383815-2R7N	2.7	30	100	105 (90)	1.70	1.20
F1A2-383815-3R3N	3.3	30	100	120 (100)	1.50	1.10
F1A2-383815-3R9N	3.9	30	100	130 (110)	1.40	1.05
F1A2-383815-4R7N	4.7	30	100	140 (120)	1.30	1.00
F1A2-383815-5R6N	5.6	30	100	150 (125)	1.20	0.95
F1A2-383815-6R8N	6.8	30	100	180 (150)	1.10	0.90
F1A2-383815-8R2N	8.2	30	100	215 (180)	1.00	0.80
F1A2-383815-100M	10.0	20	100	245 (205)	0.90	0.76
F1A2-383815-120M	12.0	20	100	290 (240)	0.75	0.70
F1A2-383815-150M	15.0	20	100	335 (280)	0.70	0.65
F1A2-383815-180M	18.0	20	100	430 (360)	0.60	0.57
F1A2-383815-220M	22.0	20	100	480 (400)	0.55	0.50
F1A2-383815-270M	27.0	20	100	635 (530)	0.48	0.45
F1A2-383815-330M	33.0	20	100	720 (600)	0.42	0.42
F1A2-383815-390M	39.0	20	100	940 (785)	0.38	0.37
F1A2-383815-470M	47.0	20	100	1030 (860)	0.35	0.35

¹ I_{SAT} (Saturation Rated Current): The current when the inductance becomes 30% lower than its initial value (T_a = 25°C and T_a = 100°C).

² I_{RMS} (Temperature Rise Current): The current when the temperature of coil increases up to max. $\Delta T = 40^\circ\text{C}$ (T_a = 25°C).

- Test equipment**

L: measured on Agilent 4284A LCR meter or equivalent

DCR: measured on Chroma 16502 micro-ohm meter or equivalent

I_{SAT} & I_{RMS}: measured on Agilent 4284A LCR meter with 42841A Current source or equivalent

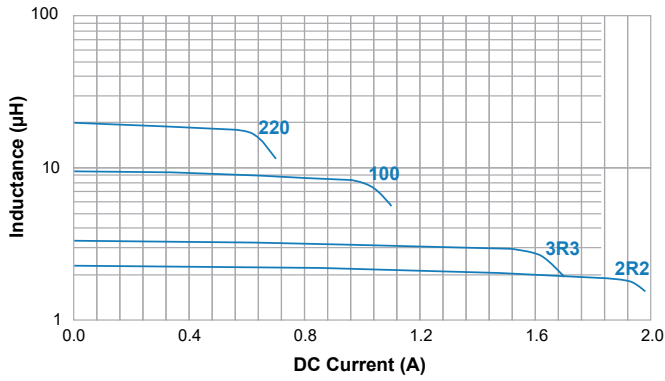
Custom versions available upon request.



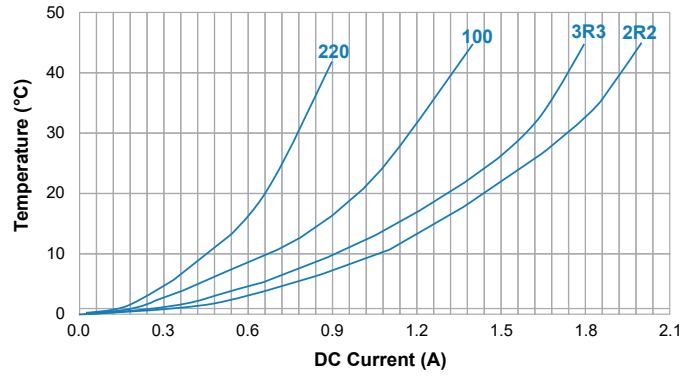
128 Atlantic Avenue, Lynbrook, NY 11563
 Toll Free 866-239-5777 | Tel 516-239-5777 | Fax 516-239-7208
 sales@signaltransformer.com | techhelp@signaltransformer.com

belfuse.com/signal

TYPICAL PERFORMANCE CURVES



Inductance vs DC current



Temperature rise vs DC current

Custom versions available upon request.



128 Atlantic Avenue, Lynbrook, NY 11563
 Toll Free 866-239-5777 | Tel 516-239-5777 | Fax 516-239-7208
 sales@signaltransformer.com | techhelp@signaltransformer.com

belfuse.com/signal

F1A2-383818 SERIES

Part Number	Inductance L (μ H)	Tolerance (\pm %)	Test Freq. (0.1 V) (kHz)	DCR Max. (Typ.) (m Ω)	I _{SAT} Max. ¹ (A)	I _{RMS} Max. ² (A)
F1A2-383818-1R0N	1.0	30	100	65 (55)	3.50	1.60
F1A2-383818-1R2N	1.2	30	100	75 (60)	3.10	1.50
F1A2-383818-1R5N	1.5	30	100	85 (70)	2.80	1.40
F1A2-383818-1R8N	1.8	30	100	95 (80)	2.60	1.35
F1A2-383818-2R2N	2.2	30	100	105 (90)	2.40	1.25
F1A2-383818-3R3N	3.3	30	100	120 (100)	2.20	1.20
F1A2-383818-3R9N	3.9	30	100	130 (110)	2.00	1.15
F1A2-383818-4R7N	4.7	30	100	145 (120)	1.80	1.10
F1A2-383818-5R6N	5.6	30	100	170 (140)	1.60	1.00
F1A2-383818-6R8N	6.8	30	100	180 (150)	1.50	0.95
F1A2-383818-8R2N	8.2	30	100	205 (170)	1.40	0.82
F1A2-383818-100M	10.0	20	100	245 (205)	1.10	0.75
F1A2-383818-120M	12.0	20	100	275 (230)	1.00	0.70
F1A2-383818-150M	15.0	20	100	360 (300)	0.90	0.62
F1A2-383818-180M	18.0	20	100	410 (340)	0.85	0.58
F1A2-383818-220M	22.0	20	100	515 (430)	0.75	0.52
F1A2-383818-270M	27.0	20	100	600 (500)	0.70	0.48
F1A2-383818-330M	33.0	20	100	770 (640)	0.60	0.42
F1A2-383818-390M	39.0	20	100	845 (705)	0.55	0.40
F1A2-383818-470M	47.0	20	100	1160 (965)	0.48	0.35

¹ I_{SAT} (Saturation Rated Current): The current when the inductance becomes 30% lower than its initial value (T_a = 25°C and T_a = 100°C).

² I_{RMS} (Temperature Rise Current): The current when the temperature of coil increases up to max. $\Delta T = 40^\circ\text{C}$ (T_a = 25°C).

- **Test equipment**

L: measured on Agilent 4284A LCR meter or equivalent

DCR: measured on Chroma 16502 micro-ohm meter or equivalent

I_{SAT} & I_{RMS}: measured on Agilent 4284A LCR meter with 42841A Current source or equivalent

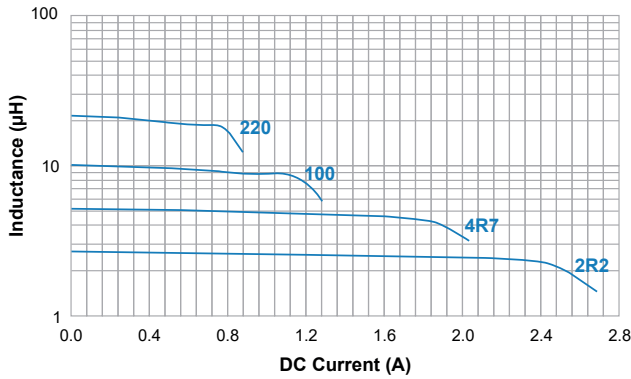
Custom versions available upon request.



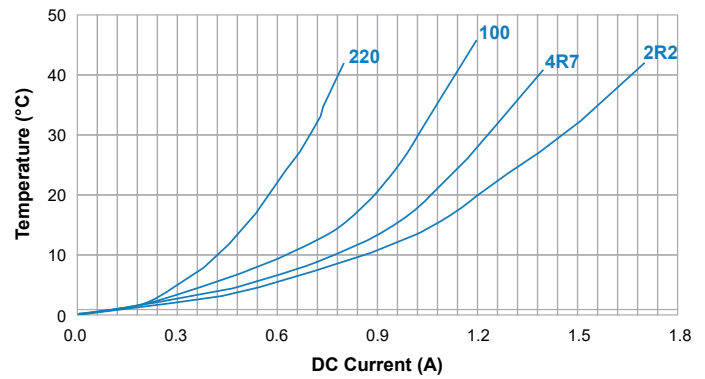
128 Atlantic Avenue, Lynbrook, NY 11563
Toll Free 866-239-5777 | Tel 516-239-5777 | Fax 516-239-7208
sales@signaltransformer.com | techhelp@signaltransformer.com

belfuse.com/signal

TYPICAL PERFORMANCE CURVES

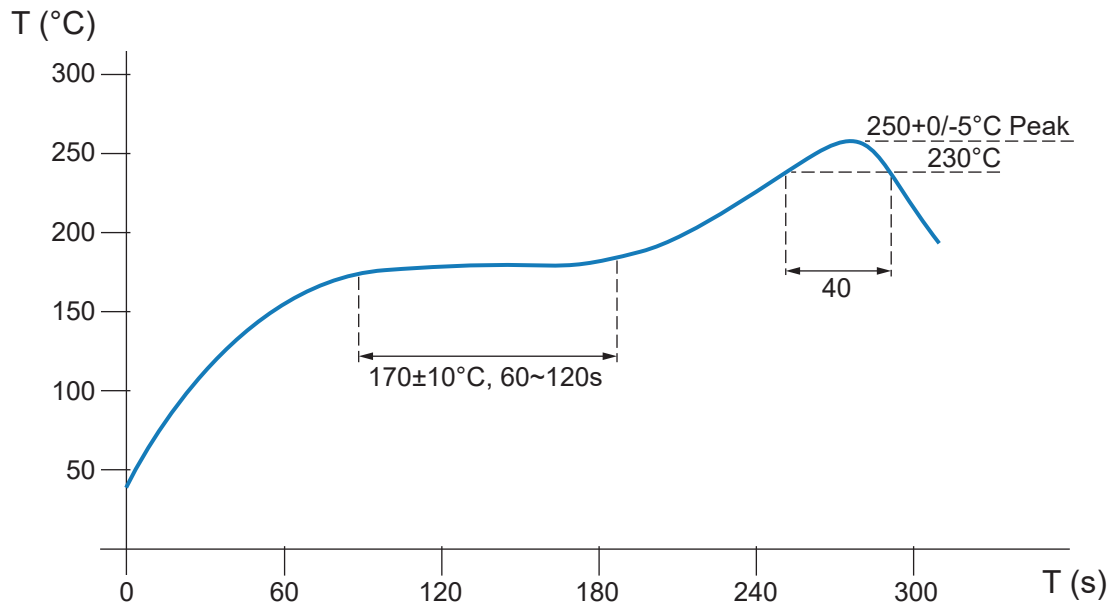


Inductance vs DC current



Temperature rise vs DC current

RECOMMENDED REFLOW SOLDERING CONDITIONS



- **ADD**

The recommended reflow conditions as above graph, is set according to our soldering equipment. Since various manufactures may have different reflow soldering equipment, products, process conditions, set methods, etc., when setting the reflow conditions, please adjust and confirm according to users' environment/equipment.

- **Notice**

- Solder reflow temperature: +250°C max. for maximum 10 seconds
- It is not recommended to solder inductors by soldering iron
- Please contact us for details

Custom versions available upon request.

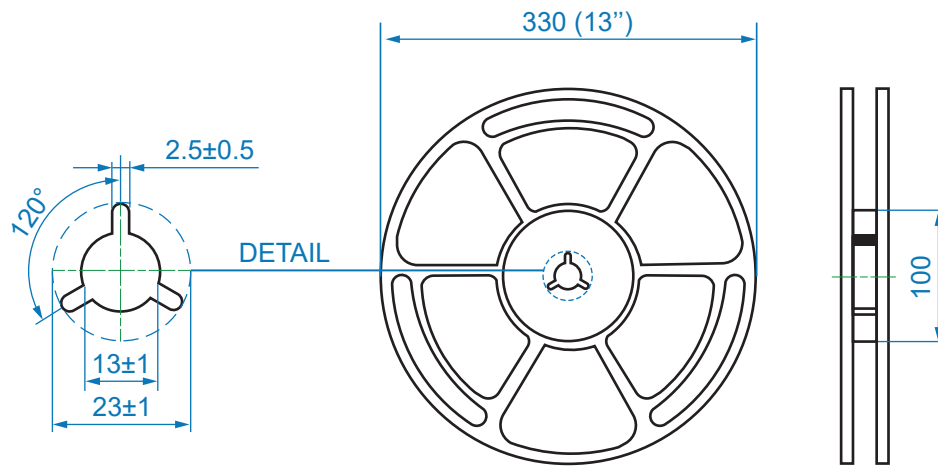
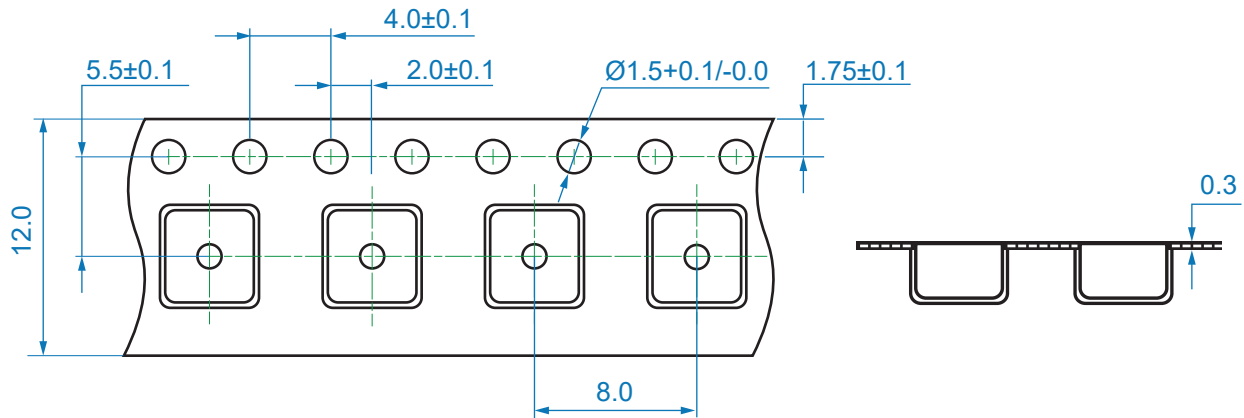
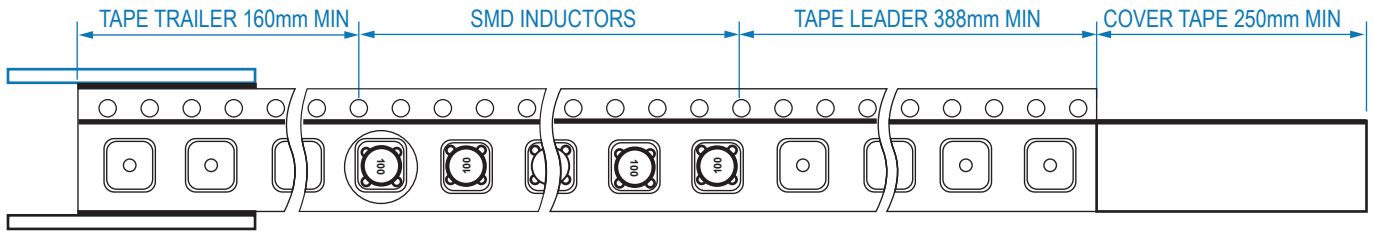


128 Atlantic Avenue, Lynbrook, NY 11563
Toll Free 866-239-5777 | Tel 516-239-5777 | Fax 516-239-7208
sales@signaltransformer.com | techhelp@signaltransformer.com

belfuse.com/signal

TAPE & REEL SPECIFICATIONS

Dimension unit: mm



Taping specification: EIA -481 Compliant

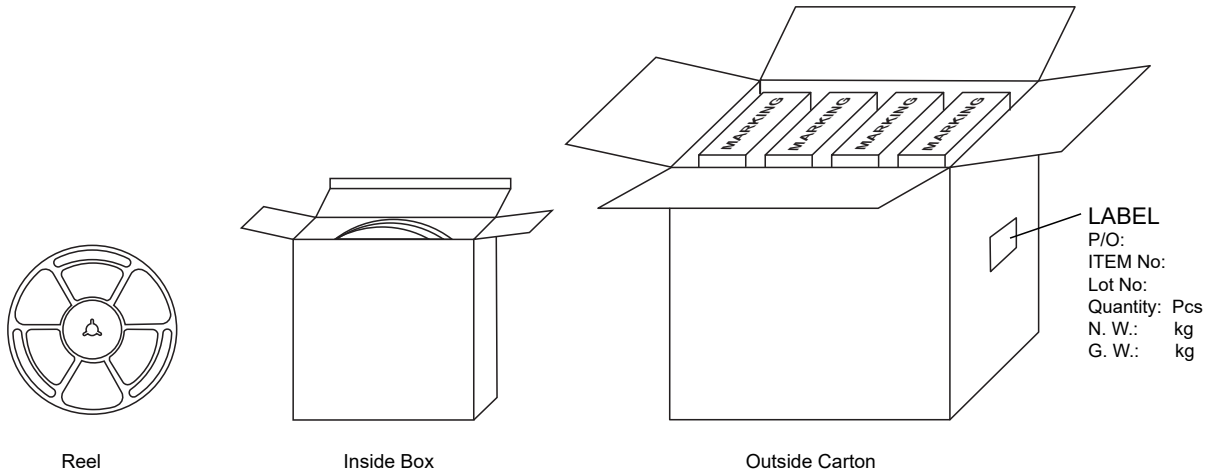
Custom versions available upon request.



128 Atlantic Avenue, Lynbrook, NY 11563
Toll Free 866-239-5777 | Tel 516-239-5777 | Fax 516-239-7208
sales@signaltransformer.com | techhelp@signaltransformer.com

belfuse.com/signal

PACKAGING SPECIFICATIONS



Series	Packaging Quantity (pcs)		
	Reel	Inside box	Outside carton
F1A2-383812	4000	20000	80000
F1A2-383815	4000	20000	80000
F1A2-383818	3500	17500	70000

Storage Conditions

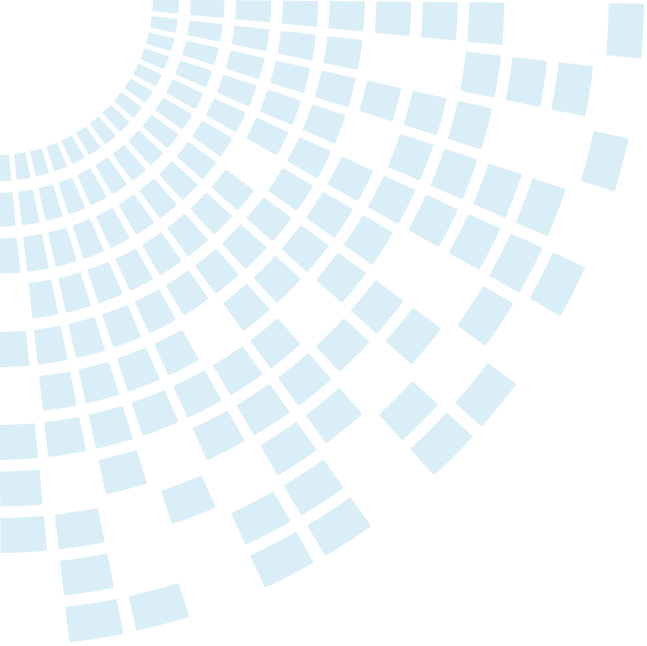
- Temperature and humidity conditions < 35°C and < 35 - 65 %
- Moisture Sensitivity Level (MSL): Level 1
- Recommendations: Inductors should be used within 6 months from the time of delivery
- Packaging material should be kept away from where chlorine and sulfur exist

Custom versions available upon request.



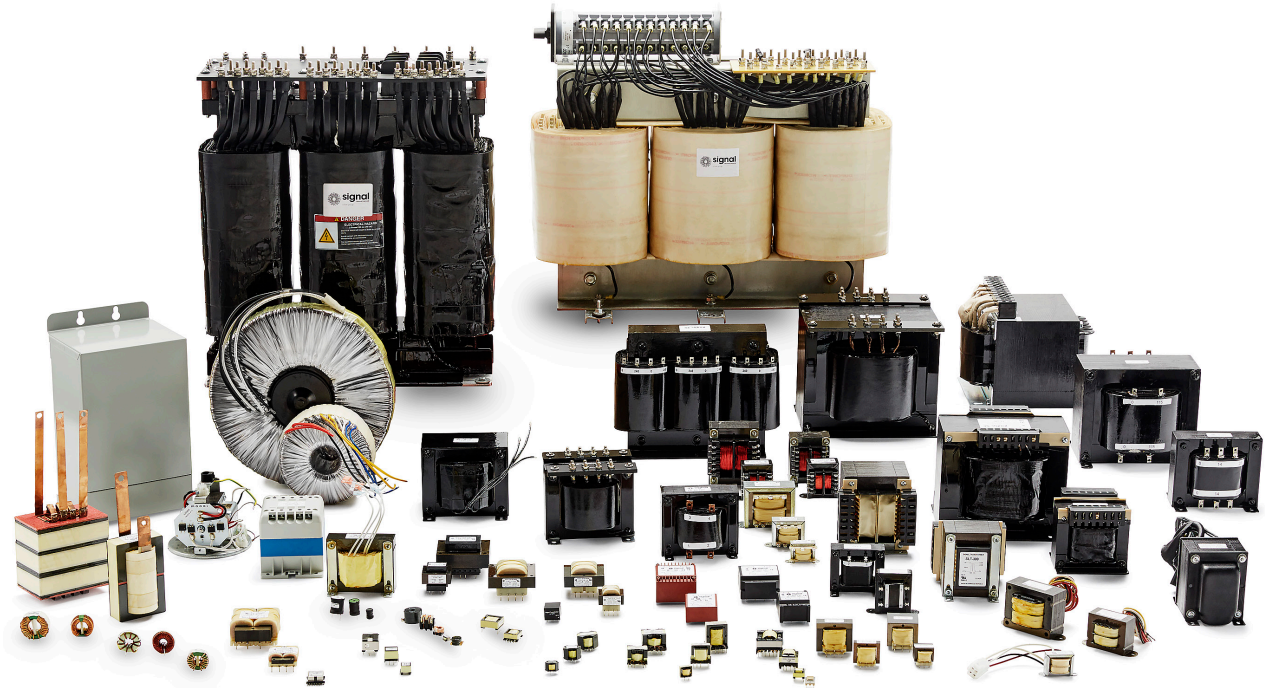
128 Atlantic Avenue, Lynbrook, NY 11563
 Toll Free 866-239-5777 | Tel 516-239-5777 | Fax 516-239-7208
 sales@signaltransformer.com | techhelp@signaltransformer.com

belfuse.com/signal



About Signal Transformer

Signal Transformer is known as the world's leader of wire wound magnetic solutions since 1959. With over 50 years of experience manufacturing transformers, chokes, inductors and custom or modified standard products. Signal offers not only the most comprehensive line of certified standard power conversion products, with our vast engineering, manufacturing and regulatory resources; Signal Transformer excels in the design and manufacturer of cost effective, specialized platforms.



**For more information,
please contact us:**

128 Atlantic Avenue
Lynbrook, NY 11563

Toll Free +1 866-239-5777

Tel +1 516-239-5777

Fax +1 516-239-7208

sales@signaltransformer.com
techhelp@signaltransformer.com

[belfuse.com/signal](https://www.belfuse.com/signal)

