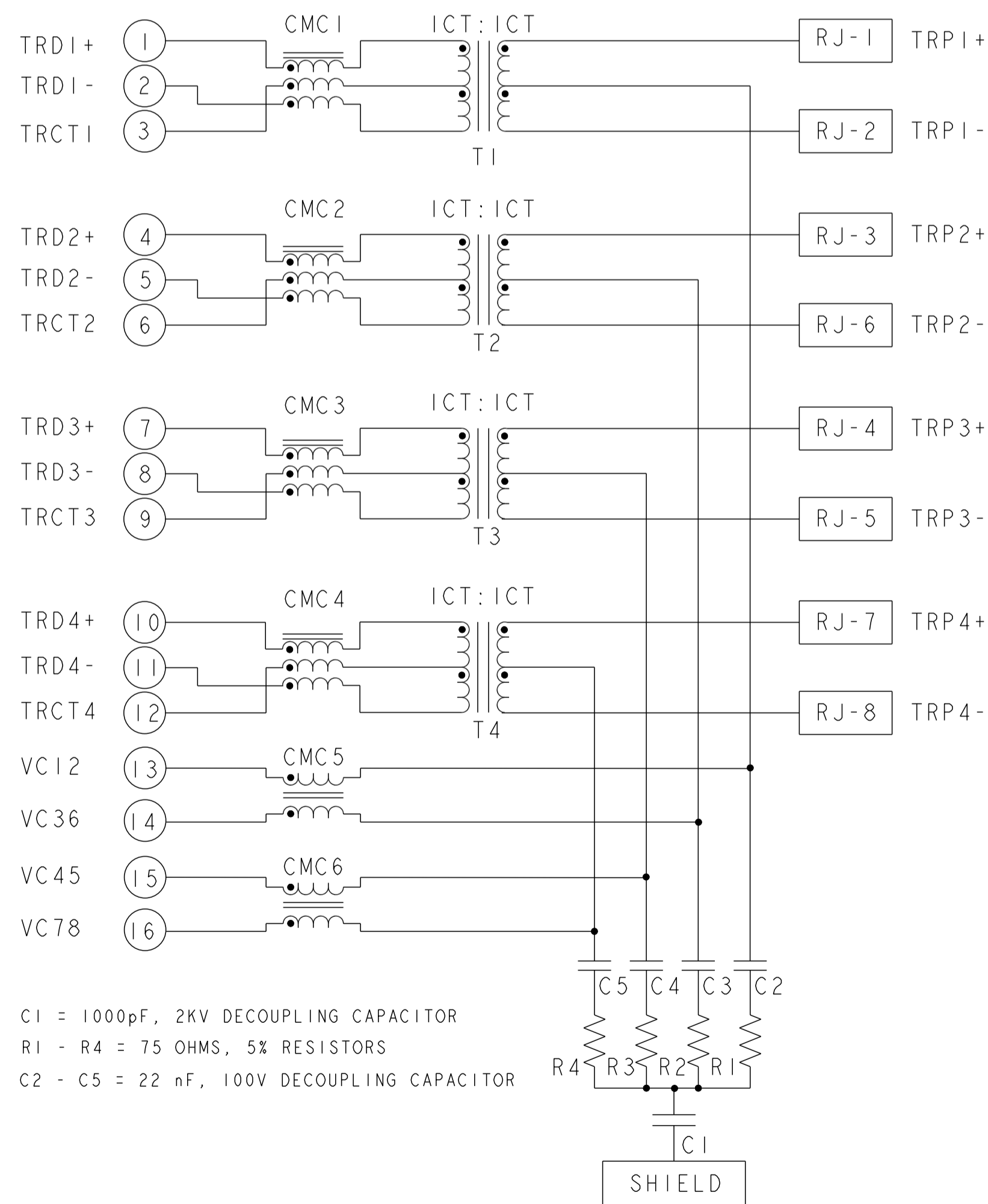


S9UTG04ET 10 GIGABIT 100W 4PPoE CIRCUIT



1. MATERIALS
 HOUSING: THERMOPLASTIC, BLACK, FLAMMABILITY RATING UL 94V-0
 SHIELD: NICKEL OR TIN PLATED ON COPPER ALLOY
 COMPLIANT PIN: PHOSPHOR BRONZE, PLATED WITH 2.54um MIN MATTE TIN OVER 1.27um MIN NICKEL
 CONTACT: PHOSPHOR BRONZE, WITH 1.27um MIN OVERALL NICKEL UNDERPLATE AND SELECTIVE 1.27um MIN GOLD PLATING AT MATING INTERFACE

2. MAGNETICS
 - APPLICATION: 1G/2.5G/5G/10G BASE-T, 4PPoE EXTENDED TEMPERATURE
 - IMPEDANCE: 100 OHMS
 - TURNS RATIO (CHIP:CABLE): 1:1 ALL FOUR PAIRS
 - OPEN CIRCUIT INDUCTANCE (OCL): 160uH MIN @ 100kHz, 0.1VRMS, 8mA DC BIAS, ALL FOUR PAIRS. 120uH MIN @ 100kHz, 0.1VRMS, 23mA DC BIAS, ALL FOUR PAIRS.
 - ALL FOUR PAIRS BI-DIRECTIONAL
 - PoE CURRENT: 1A DC MAX FOR ONE PAIR
 - PERFORMANCE @ 25°C (WHERE f IS FREQUENCY IN MHZ)
 (a) INSERTION LOSS (IL):
 1 MHZ TO 400 MHZ -0.5-1.3*(f-1)/400 dB MIN
 (b) RETURN LOSS (RL):
 1 MHZ TO 100 MHZ -17 dB MAX
 100 MHZ TO 500 MHZ -17 + 20.75LOG10(f/100) dB MAX
 (c) CROSSTALK ATTENUATION:
 1 MHZ TO 500 MHZ -20 dB MAX
 (d) COMMON MODE REJECTION:
 1 MHZ TO 500 MHZ -16 dB MAX
 - ISOLATION VOLTAGE: 2250VDC FOR 60 SECONDS WITH A RISE TIME OF 500V/SEC, WITH ALL PORTS CONNECTED.

3. THE MAGNETIC CIRCUIT ON ALL FOUR CHANNELS IS SYMMETRICAL AND SUPPORTS AUTO-MDIX OPERATION.

4. OPERATING TEMPERATURE: -40°C - 85°C.

5. DATUM Y AND BASIC DIMENSION ESTABLISHED BY CUSTOMER.

6. RJ45 CAVITY CONFORMS TO FCC RULES AND REGULATION PART 68 SUBPART F.

7. TRP CONNECTOR LOGO, PART NUMBER, DATE CODE, COUNTRY OF ORIGIN, AGENCY APPROVAL MARKING IN APPROPRIATE LOCATION SHOWN.
 DATE CODE: YYWW WHERE "YY" IS YEAR, "WW" IS WORK WEEK, "D" IS DAY OF WEEK, WITH SUNDAY= 1

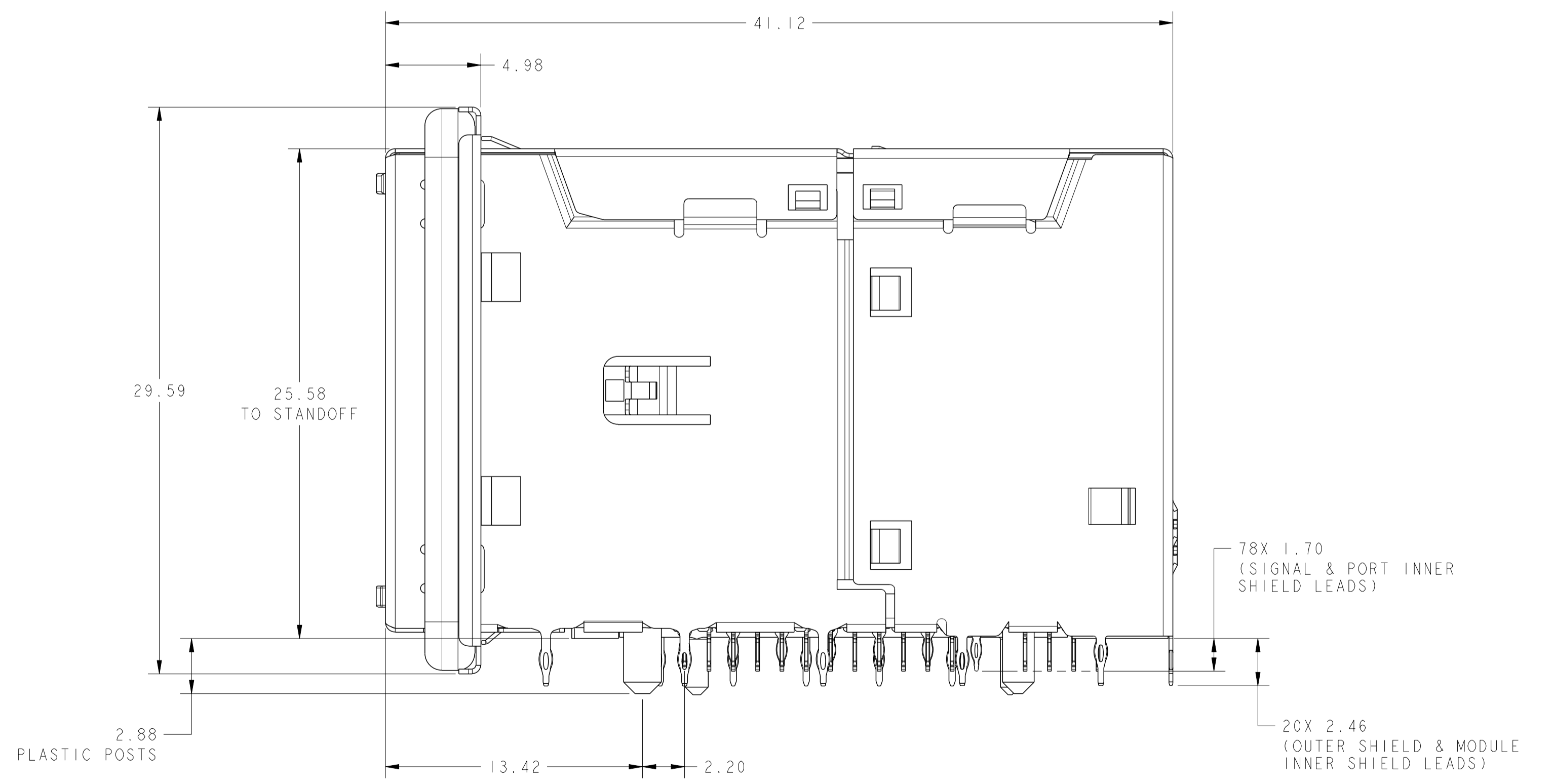
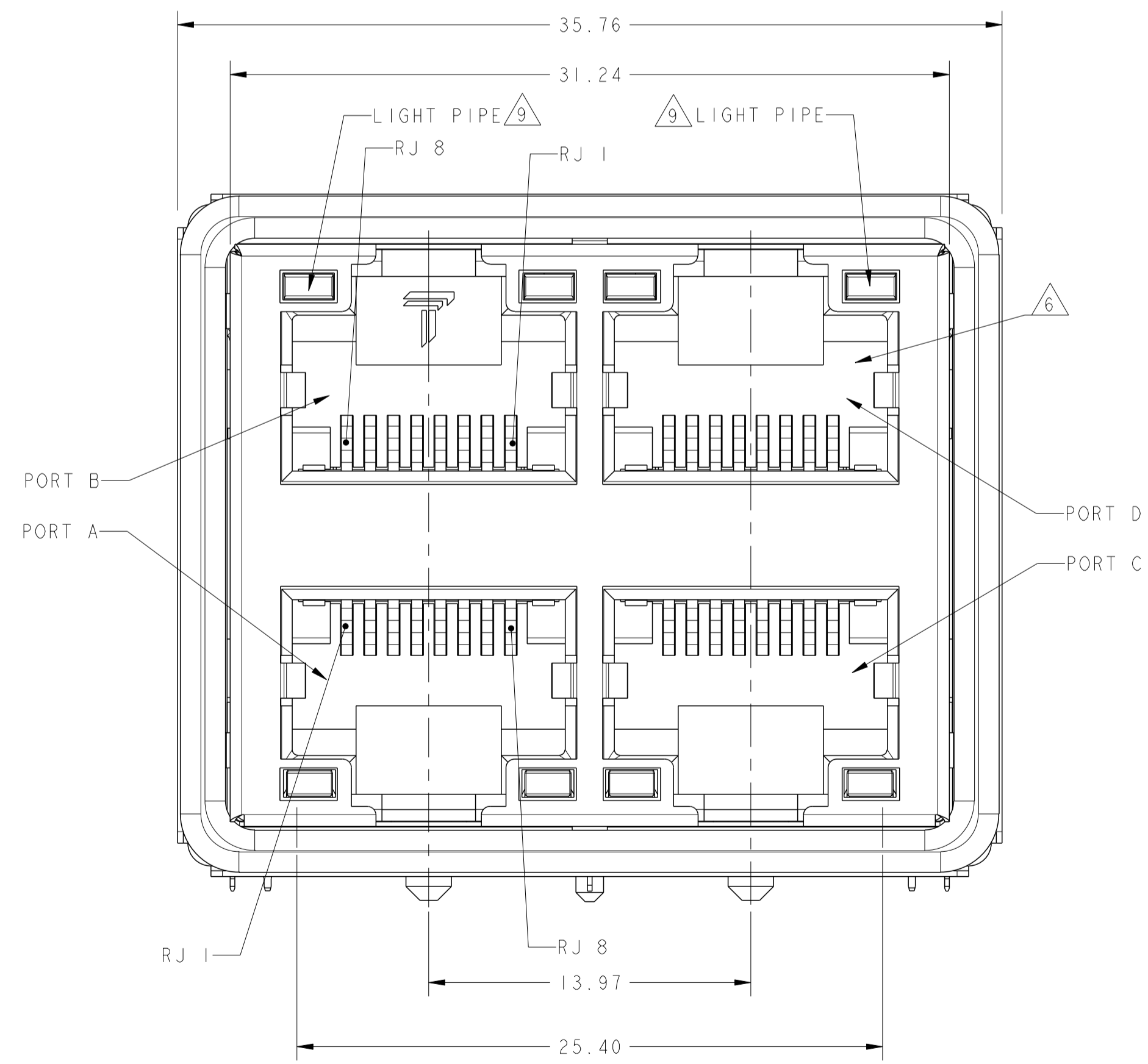
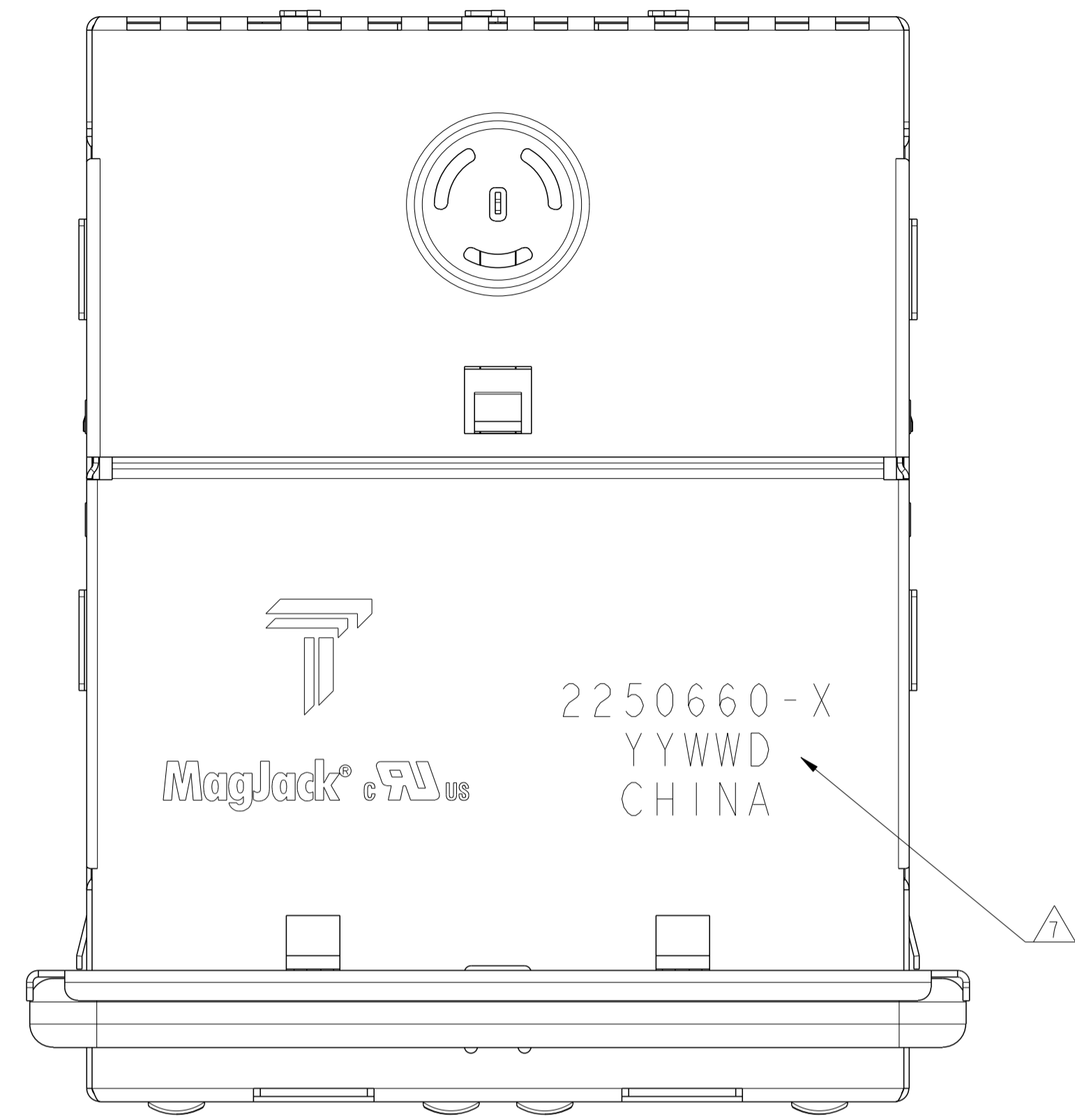
8. PANEL SEATING LOCATION WITH RESPECT TO CUSTOMER PCB EDGE.

9. THE FINISHED GOODS IS WITHOUT SMD LED, THE SMD LED IS PROVIDED BY CUSTOMER HERSELF, AND THE SMD LED IS MOUNTED ON CUSTOMER PCB.

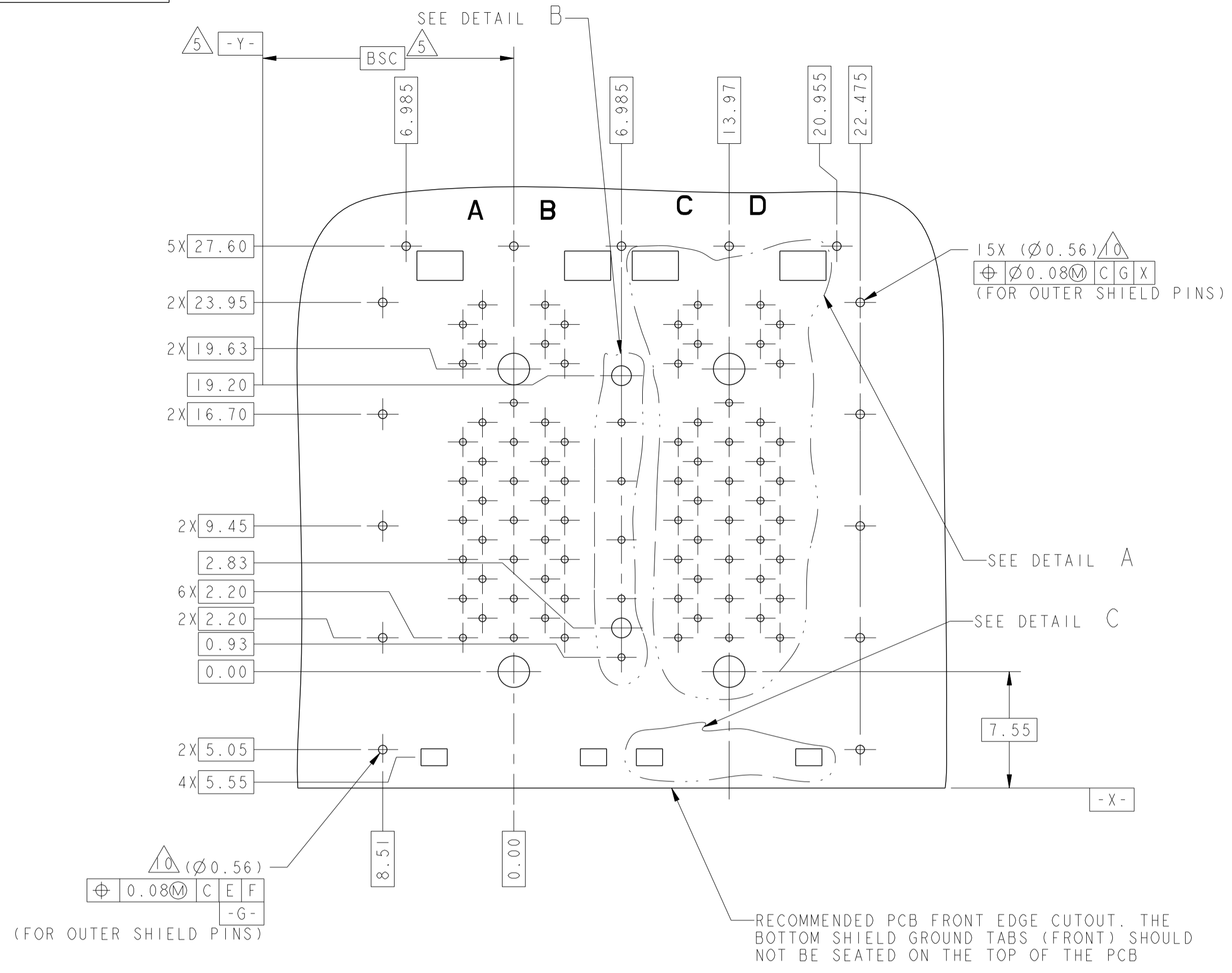
10. FOR HOLE SIZE AND PLATINGS, SEE SHEET 4.

2250660-1
 PART NUMBER

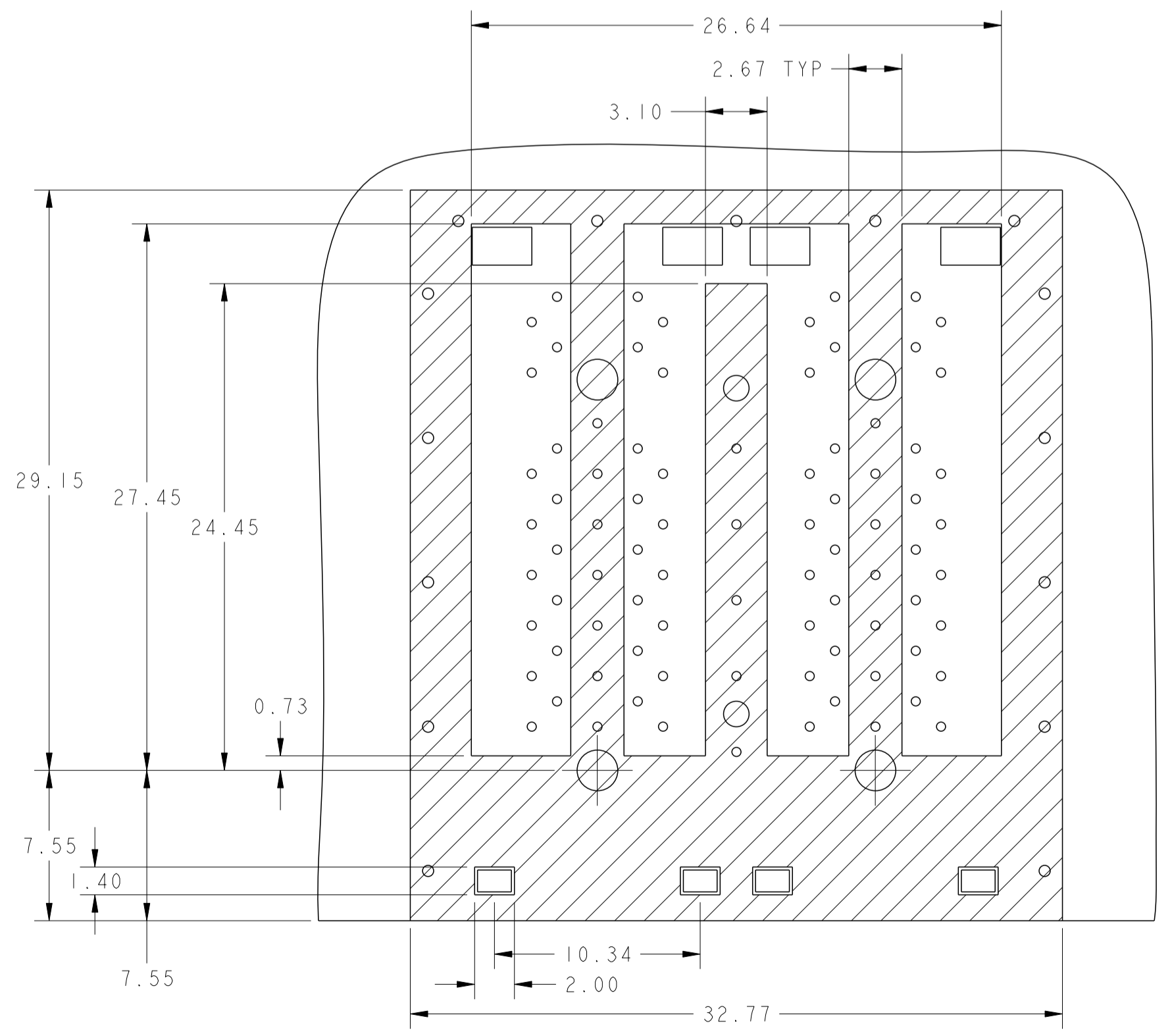
THIS DRAWING IS A CONTROLLED DOCUMENT AND COMPLIANT TO ASME Y14.5M		OWN: JARRY YE / 16 JUL 2019	DONGGUAN CHINA
DIMENSIONS: mm		CHK: TOWER YU / BILL LIU / 16 JUL 2019	
TOLERANCES UNLESS OTHERWISE SPECIFIED:		APVD: TONY YUAN / 16 JUL 2019	MODEL NAME: MAGJACK STACK 4PPoE
0 PLC ±0.25 1 PLC ±0.25 2 PLC ±0.25 3 PLC ±0.25 4 PLC ±0.25 ANGLES ±° APPLICATION SPEC ±°		DESC: 2X2, S9UTG04ET 10G 100W 4PPoE WITH LIGHT PIPE	RESTRICTED TO: -
PRODUCT SPEC: 108-104004		SIZE: A1	SCALE: NTS
CUSTOMER DRAWING		DRAWING NO: C=2250660	SHEET 1 OF 6 REV 2



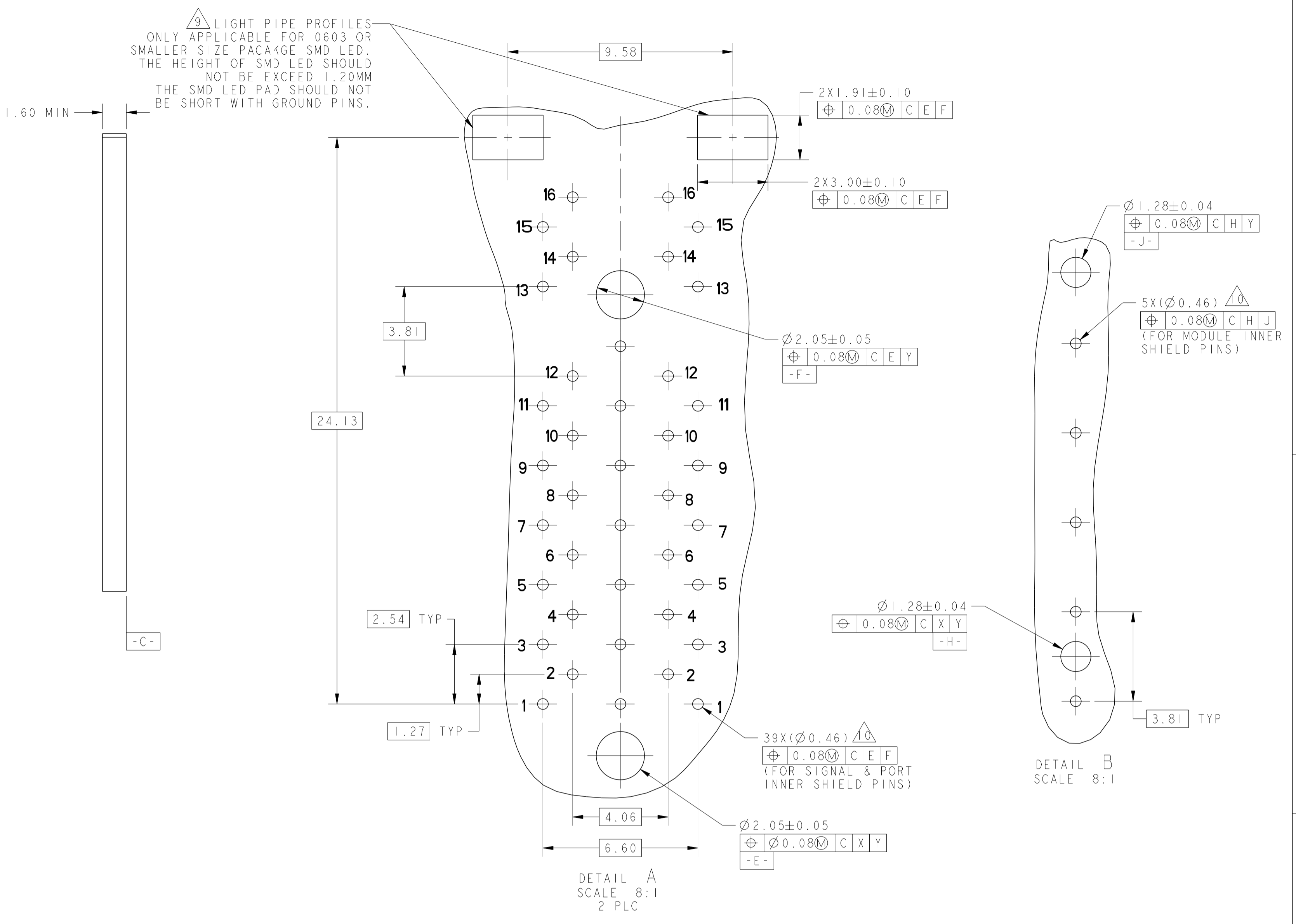
THIS DRAWING IS A CONTROLLED DOCUMENT. AND COMPLIANT TO ASME Y14.5M		DWN JARRY YE / TERRY LIN 16 JUL 2019 CHK TOWER YU / BILL LIU 16 JUL 2019 APVD TONY YUAN 16 JUL 2019	DONGGUAN CHINA
DIMENSIONS: mm 0 PLC ±0.25 1 PLC ±0.25 2 PLC ±0.25 3 PLC ±0.25 4 PLC ± ANGLES ±° APPLICATION SPEC	MODEL NAME MAGJACK STACK 4PPoE	DESC 2X2, S9UTG04ET 10G 100W 4PPoE WITH LIGHT PIPE SIZE CAGE CODE DRAWING NO A1 C=2250660	
PRODUCT SPEC 108-104004	CUSTOMER DRAWING	SCALE NTS SHEET 2 OF 6 REV 2	



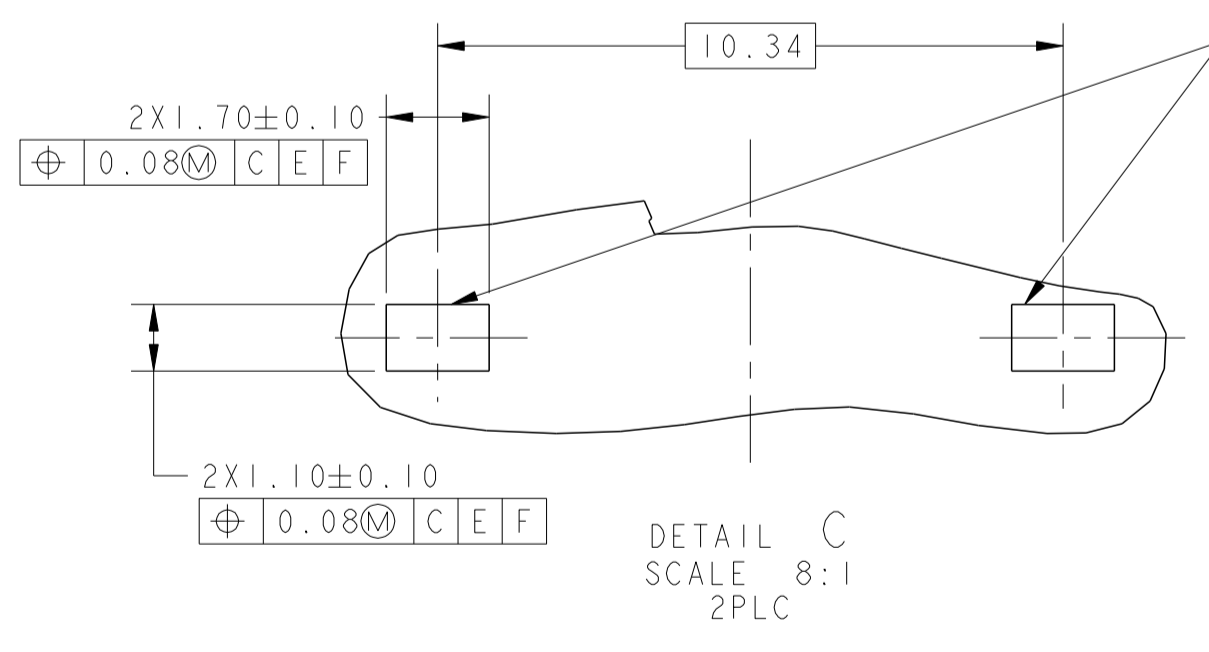
**RECOMMENDED PC BOARD LAYOUT
 (VIEW FROM COMPONENT SIDE)**



**THE SHADED AREA ON THE CUSTOMER BOARD ARE
 RECOMMENDED TO BE CLEAR OF ANY VIA HOLE OR
 COMPONENT PAD**

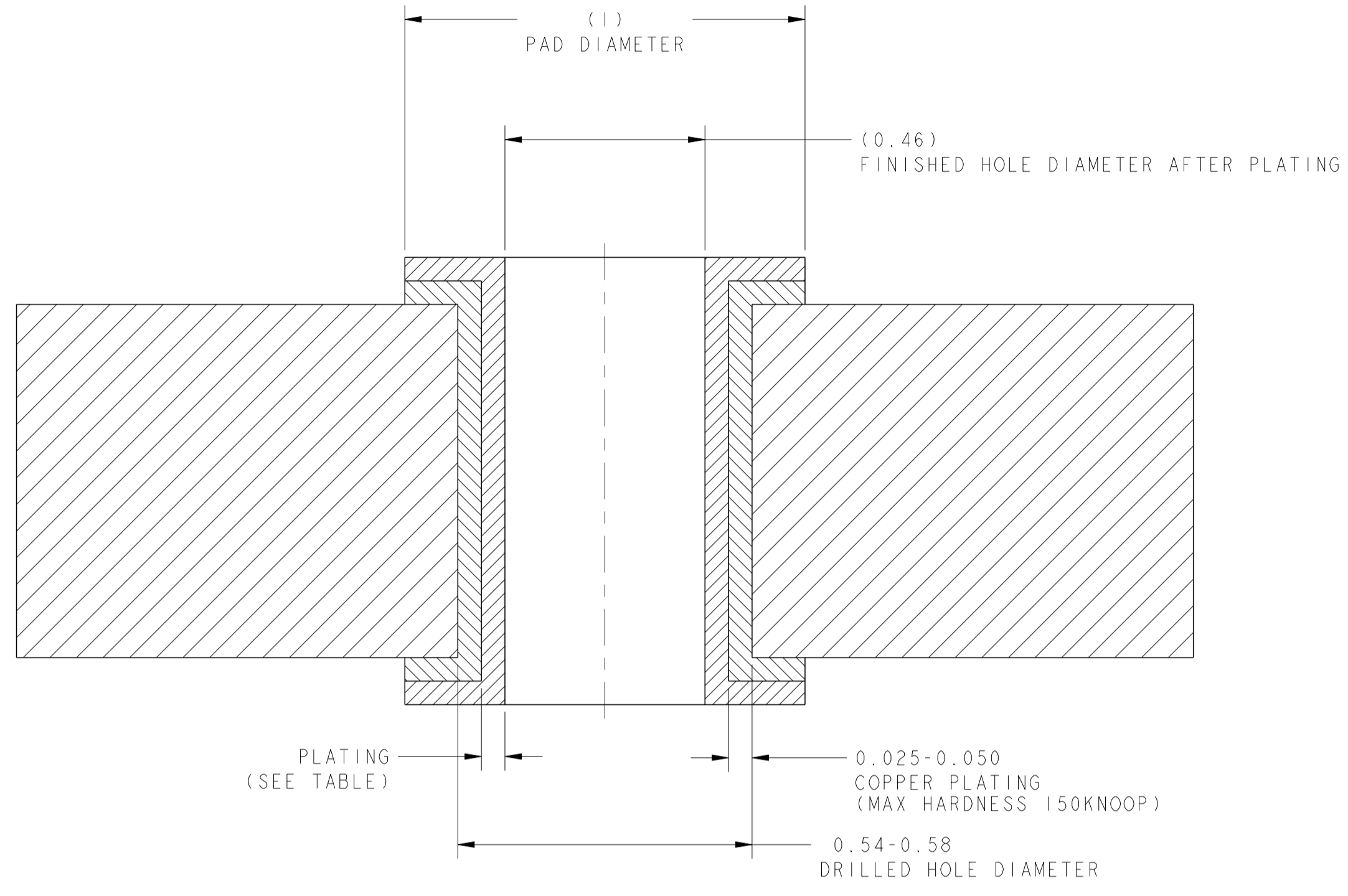


**DETAIL A
 SCALE 8:1
 2 PLC**

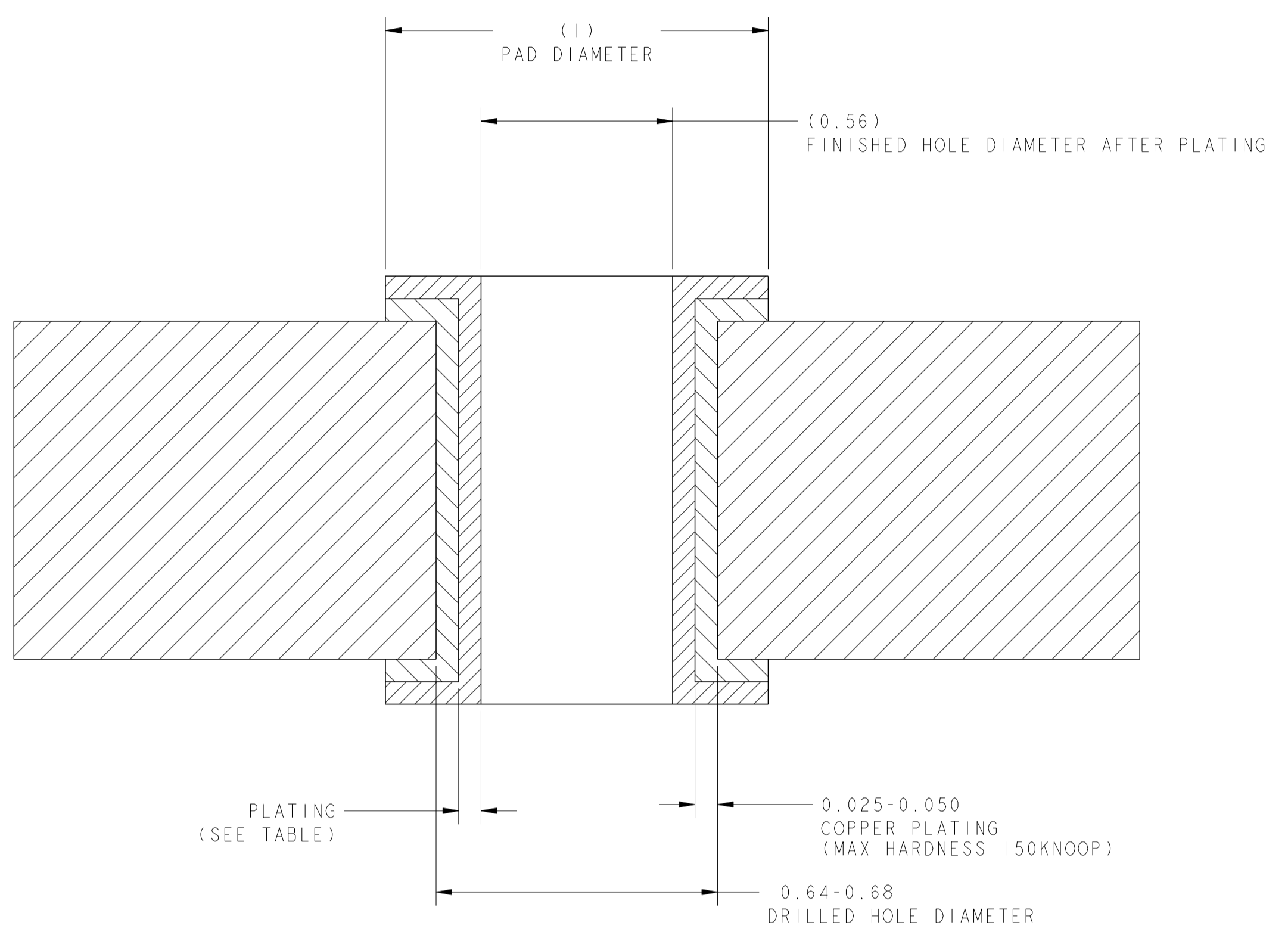


**DETAIL C
 SCALE 8:1
 2 PLC**

THIS DRAWING IS A CONTROLLED DOCUMENT. AND COMPLIANT TO ASME Y14.5M		DWG: JARRY YE / 16 JUL 2019 CHK: TERRY LIN / 16 JUL 2019 APP'D: TOWER YU / BILL LIU / 16 JUL 2019 TONY YUAN		DONGGUAN CHINA a bel group	
DIMENSIONS: mm	TOLERANCES UNLESS OTHERWISE SPECIFIED:	MODEL NAME	DESC	SIZE	RESTRICTED TO
0 PLC ±0.25	1 PLC ±0.25	MAGJACK	2X2, S9UTG04ET 10G 100W 4PPoE WITH LIGHT PIPE	A1	-
2 PLC ±0.25	3 PLC ±0.25	STACK 4PPoE		C=2250660	
4 PLC ±0.25	ANGLES				
APPLICATION SPEC					
108-104004		CUSTOMER DRAWING		SCALE NTS	SHEET 3 OF 6 REV 2



RECOMMENDED HOLE DIMENSIONS FOR SIGNAL & INNER SHIELD CONTACTS

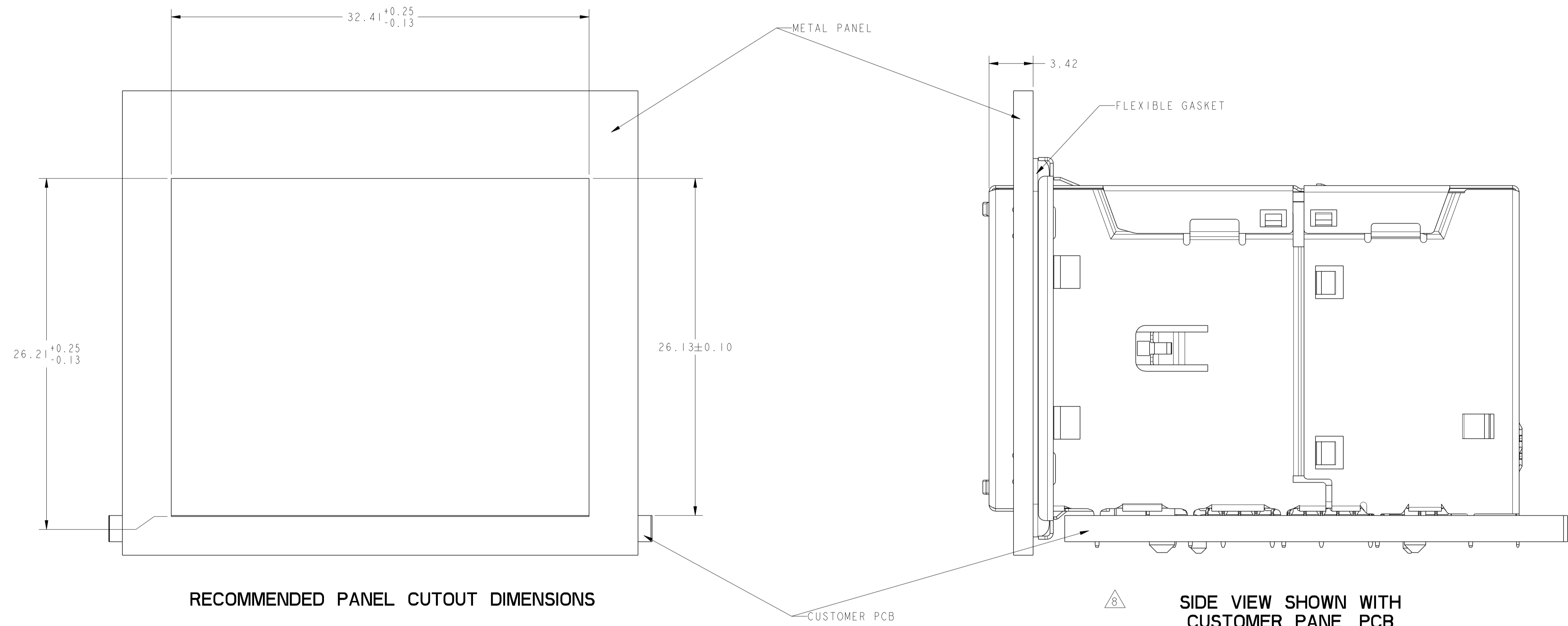



RECOMMENDED HOLE DIMENSIONS FOR OUTER SHIELD CONTACTS

THICKNESS	PLATING
0.004-0.010	HOT AIR SOLDER LEVELING (HASL) TIN-LEAD (Sn Pb)
0.0005-0.001	IMMERSION TIN (Sn)
0.0002-0.0005	ORGANIC SOLDERABILITY PRESERVATIVE (OSP)
0.0001-0.0005 Au, 0.004-0.0076 Ni	IMMERSION GOLD (Au) OVER NICKEL (Ni) (ENIG)
0.010-0.025	TIN LEAD PLATING (Sn Pb)
0.0001-0.00015	IMMERSION SILVER (Ag)


THIS DRAWING IS A CONTROLLED DOCUMENT AND COMPLIANT TO ASME Y14.5M

DIMENSIONS: mm 	TOLERANCES UNLESS OTHERWISE SPECIFIED: 0 PLC ±0.25 1 PLC ±0.25 2 PLC ±0.25 3 PLC ±0.25 4 PLC ± ANGLES ±° APPLICATION SPEC ±	DWN JARRY YE / 16 JUL 2019 CHK TOWER YU / 16 JUL 2019 APVD TONY YUAN / 16 JUL 2019 MODEL NAME MAGJACK STACK 4PPoE	 DONGGUAN CHINA DESC 2X2, S9UTG04ET 10G 100W 4PPoE WITH LIGHT PIPE SIZE A1 CAGE CODE DRAWING NO C=2250660 RESTRICTED TO - CUSTOMER DRAWING SCALE NTS SHEET 4 OF 6 REV 2
-----------------------	--	--	---



THIS DRAWING IS A CONTROLLED DOCUMENT. AND COMPLIANT TO ASME Y14.5M		OWN: JARRY YE / 16 JUL 2019	 trp CONNECTOR a bel group DONGGUAN CHINA
DIMENSIONS: mm		CHK: TOWER YU / BILL LIU / 16 JUL 2019	
TOLERANCES UNLESS OTHERWISE SPECIFIED: 0 PLC ±0.25 1 PLC ±0.25 2 PLC ±0.25 3 PLC ±0.25 4 PLC ± ANGLES ±° APPLICATION SPEC ±°		APP'D: TONY YUAN / 16 JUL 2019	
PRODUCT SPEC: 108-104004		MODEL NAME: MAGJACK STACK 4PPoE	DESC: 2X2, S9UTG04ET 10G 100W 4PPoE WITH LIGHT PIPE SIZE: A1 CAGE CODE: C=2250660 DRAWING NO: - RESTRICTED TO: - CUSTOMER DRAWING SCALE: NTS SHEET 5 OF 6 REV 2

2250660				STOCK DISPOSITION				
2X2, S9UTG04ET 10G 100W 4PPoE, WITH LIGHT PIPE				A: CONTINUE AS IS D: USE OLD FIRST B: REWORK E: PARTS TO CONFORM C: SCRAP F: OTHER				
REVISION HISTORY								
DATE	REV	CHANGES	REASON	APPROVAL	INVENTORY (A,B,C,D,E,F)	WORK IN PROCESS (A,B,C,F)	SUPPLIER ORDERS (A,E,F)	OPEN CUST ORDERS (A,E,F)
10SEP2019	1	-	INITIAL RELEASE	TONY YUAN	-	-	-	-
25SEP2019	2	SHEET 3 :7D : CHANGE DIMENSION 19.60 TO 19.63	DESIGN OPTIMIZATION	TONY YUAN	-	-	-	-

THIS DRAWING IS A CONTROLLED DOCUMENT. AND COMPLIANT TO ASME Y14.5M		OWN: JARRY YE / 16 JUL 2019 CHK: TOWER YU / BILL LIU / 16 JUL 2019 APP'D: TONY YUAN / 16 JUL 2019	 trp CONNECTOR <small>a bel group</small>	DONGGUAN CHINA	
DIMENSIONS: mm	TOLERANCES UNLESS OTHERWISE SPECIFIED: 0 PLC ±0.25 1 PLC ±0.25 2 PLC ±0.25 3 PLC ±0.25 4 PLC ±0.25 ANGLES ±°	MODEL NAME MAGJACK STACK 4PPoE		DESC 2X2, S9UTG04ET 10G 100W 4PPoE WITH LIGHT PIPE	RESTRICTED TO
PRODUCT SPEC 108-104004	APPLICATION SPEC	SIZE A1	CAGE CODE C=2250660	DRAWING NO	
CUSTOMER DRAWING			SCALE NTS	SHEET 6	OF 6
			REV 2		