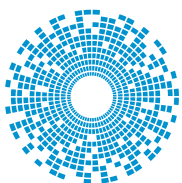




C-DMX™ Series Product Overview

Durable, Modular, eXchangable Connectors

ARINC 809 & EN4165



cinch
CONNECTIVITY SOLUTIONS
a bel group

belfuse.com/cinch

Connection Technology

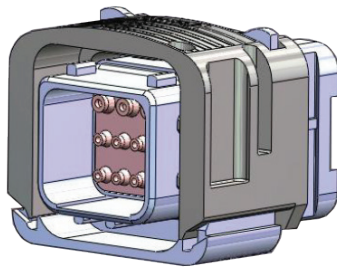
Cinch C-DMX (Durable, Modular, eXchangeable) connectors are based on the aerospace specifications EN4165 and ARINC 809. These specifications define qualified connectors used widely for cabin seat systems including InFlight Entertainment (IFE), Lighting, Power, Seat Actuation and other systems on a spectrum of aircraft.

Product Features

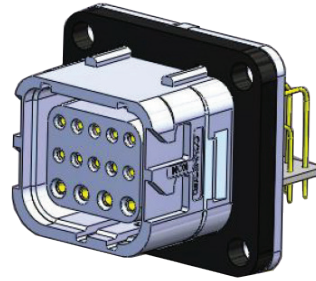
- Environmental durability, design and materials
- Multiple inserts for signal, power, data, fiber
- Quick install, positive force, “snap” termination
- Straight and right angle PCB termination available
- Polarization features built in with multiple keying codes
- Compact and light weight
- EMI protection

Shells

Plug

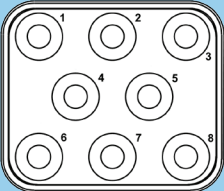
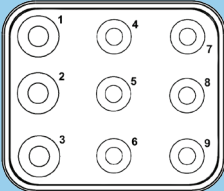
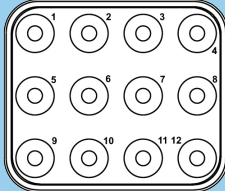
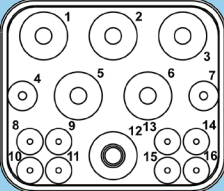
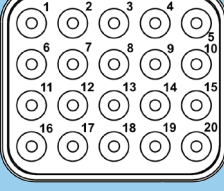
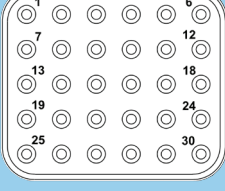
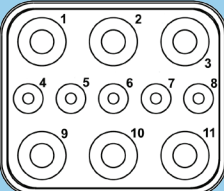
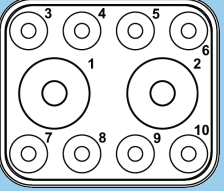


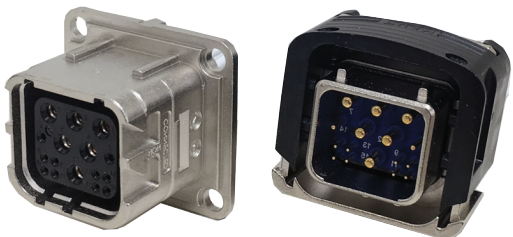
Receptacle



Product Family C-DMX = ARINC 809	C-DMX	D24	N	K	S	-
Shell size D20 = Plug D24 = Receptacle, Short D26 = Receptacle, Extended						
Polarization Key Code N = Normal Code A = A Code B = B Code C = C Code D = D Code						
Coding Plate (Receptacles Only) Omit = Without Coding Plate K = With Coding Plate						
Sealing Gasket (Receptacles Only) Omit = Without Sealing Gasket S = With Sealing Gasket						
Nut Plate (Receptacles Only) Omit = Without Nut Plate T = With Nut Plate						

Insert Contact Arrangements

Product Family	C-DMX	16-02	A	N	P
C-DMX = ARINC 809					
Insert Layout					
 <p>08-16 (8x #16 Contacts)</p>	 <p>09-36 (3x #20 & 6x #22 contacts)</p>	 <p>12-20 (12x #20 contacts)</p>			
 <p>16-02 (6x #16, 2x #22 & 8x #24 contacts)</p>	 <p>20-22 (20x #22 contacts)</p>	 <p>30-23 (30x #23 contacts)</p>			
 <p>99-01 (6x #16 & 5x #22 contacts)</p>	 <p>99-06 (2x #12 & 8x #22 contacts)</p>				
Insert Type					
A = Pin					
B = Socket					
Polarization Key Code					
N = Normal Code					
Contacts					
Omit = No Contacts					
C = Crimp Contacts					
P = Straight PCB Contacts					
R = Right Angle PCB Contacts					





Cinch Connectivity Solutions North America Office

T +1 507.833.8822
ccsorders@us.cinch.com

Cinch Connectivity Solutions Ltd European Office

T +44 (0) 1245 342060
CinchConnectivity@eu.cinch.com

Cinch Connectivity Solutions Asia Pacific Office

T +86 21 5442 7668
ccs.asia.sales@as.cinch.com

Innovative Interconnect Solutions Across the Globe

In operation since 1917, Cinch supplies high quality, high performance connectors and cables globally to the Aerospace, Military/Defense, Commercial Transportation, Oil & Gas, High End Computer, and other markets. We provide custom solutions with our creative, hands on engineering and end to end approach.

Our diverse product offerings include: connectors, enclosures and cable assemblies utilizing multiple contact technologies including copper and fiber optics. Our product engineering and development activities employ cutting edge technologies for design and modeling, and our various technologies and expertise enable us to deliver custom solutions and products for our strategic partnerships. We also serve a broad range of commercial markets, largely through our highly efficient distribution network.

We aim to exceed our customer's expectations, and to continually provide innovative solutions to the rapidly changing needs of the markets, and customers, we serve. For more information, visit [belfuse.com/cinch](https://www.belfuse.com/cinch)



+1 630.705.6000
inquiry@us.cinch.com
[belfuse.com/cinch](https://www.belfuse.com/cinch)