



Front-End Products

- Model range from 300 W to 4800 W
- AC-DC and DC-DC inputs
- 12 V, 48 V, 50 V (for Orv3) and 54 V Outputs
- Normal and reverse airflow
- Power density over 72 W/in³
- Very high efficiency up to titanium
- Digital or analog current share
- Variety of mounting styles



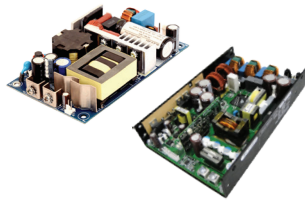
Rack Power & Data Center Solutions

- 12 Vo AC-DC Solutions up to 21.6 kW in 10U-up to 8 shelves in power zone
- 48 Vo-56 Vo AC-DC Solutions up to 28.8 kW in 10U - up to 8 shelves in power zone
- 12 Vo DC-DC Solutions up to 18 kW
- 12 Vo High Voltage DC Input Solutions
- Variety of AC and DC PDU's
- Controller for shelf to data center communication
- Power management bus communication



Enclosed Products

- Single or 3-phase input voltage range
- Scalable output power up to 80 kW
- Adjustable output voltage range
- Single, dual or multiple outputs
- Active power factor correction (PFC)
- Industrial and broadcasting applications



Open Frame, U-Channel and Enclosed Products

- Model range from 40 W to 1200 W
- Variety of single and multiple outputs
- Universal Input 90-264 VAC 305 VAC options
- High power density and efficiency
- Operation temperature -40°C to 70°C
- Industrial and medical applications



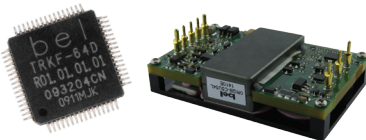
DIN Rail Products

- Wide AC input range (1/2/3 phase)
- Output ranges (36-205 VDC) adjustable
- Output power from 25 W to 2400 W
- Variety of back-up and redundancy units
- Compact size
- AC Input up to 600 VAC
- DC Input up to 850 VDC



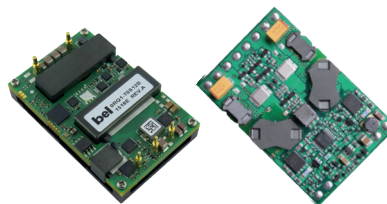
Rugged Board Mount Power

- Wide input voltage ranges 7-154 VDC, platforms with 12:1 ratio
- Output voltages 3.3-60 V (single/quad)
- Wide operating temperature ranges
- Excellent immunity to environmental conditions
- Mounting kits available
- Output power 4-200 W



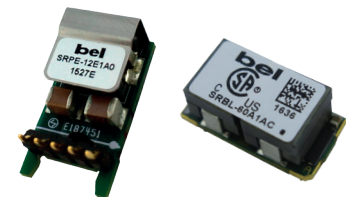
Digital Power

- Digital power system (DPS) controller controls up to 6 power blocks
- Digital PID loops
- On-Board power management I²C
- Sequencing and timing logic control
- Fault detection and reporting
- Configurable via serial interface/power management bus communication



Isolated Board Mount Products & Filters

- Sixteenth to half brick form factors
- Ultra wide (10:1), wide (4:1) or narrow (2:1) input ranges
- Through hole and surface mount
- Output Voltages 0.5 VDC to 160 VDC
- Remote on/off
- Industry standard pin-outs and footprint
- Power management bus communication



Non-Isolated Board Mount Products

- Industry standard packages
- Wide input voltage ranges
- Exceptional thermal performance in high temperatures
- Programmable output voltages
- Compensation-less COT control
- Power management bus communication



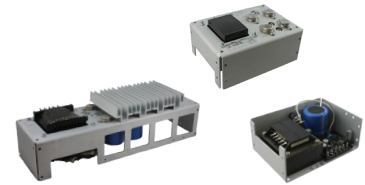
Compact PCI

- AC or DC input voltages with PFC
- Output power up to 550 W
- 3U or 6U configurations
- 4 High current outputs
- Remote sense lines
- Flexible load distribution



Rugged Cassettes

- Wide inputs for 12-220 V batteries
- Universal AC input range
- Conformally coated
- Convection cooled for temperatures -40°C to +71°C
- Full I/O protection and filters
- Wide range of accessories available
- Tested and approved for railway
- Immune to extreme harsh conditions



Linear Regulators

- AC Input voltage range 100-240 V
- Output voltages 5, 12, 15, 24, 28, 48 V
- Single, dual and triple output models
- 100% burn-in
- Low output ripple and noise
- OVP options available



DC/DC converters

- Input voltage 240-450 VDC and 450-900 VDC
- Output voltage 12 Vdc, 24 VDC and 48 VDC (future)
- 4 kW output power (max 16 kW/32 kW)
- Liquid and convection cooled products available
- Automotive approvals



DC/AC inverter

- Input voltage 240-435 VDC and 450-850 VDC
- Output voltage 120 Vac or 240 Vac
- 6 kW output power (max 32 kW/36 kW)
- Liquid cooled products available
- Automotive approvals
- Optional 3 phase configuration possible



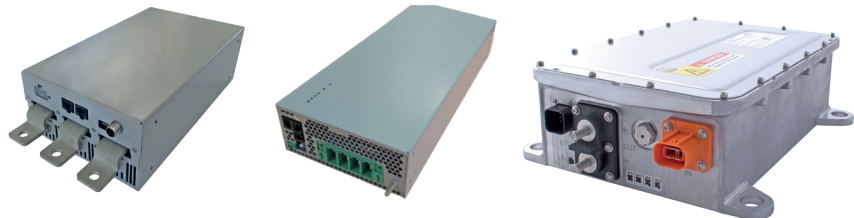
Onboard AC charger

- Input voltage single phase or three phase
- Output voltage 240-800 VDC
- Output power 22-25 kW (max 100 kW in charge mode)
- Bidirectional functionality
- Automotive approvals



Combo unit

- Single phase/split phase inverter charger
- Integrated 4 kW DC/DC converter (12 VDC) and 1 kW DC/DC converter (24 VDC)
- Output power in total 20 kW
- Liquid cooled
- Automotive approvals



Custom Solutions

- Including modified or full custom performance or change in packaging
- Motor controllers for bow thrusters
- Inverters for marine applications
- Battery chargers
- Combo systems